

## LINNEA-2R-O

~30° + 90° oval beam

### SPECIFICATION:

Dimensions	40.0 x 567.2 mm
Height	8.6 mm
Fastening	clips
ROHS compliant	yes ⓘ

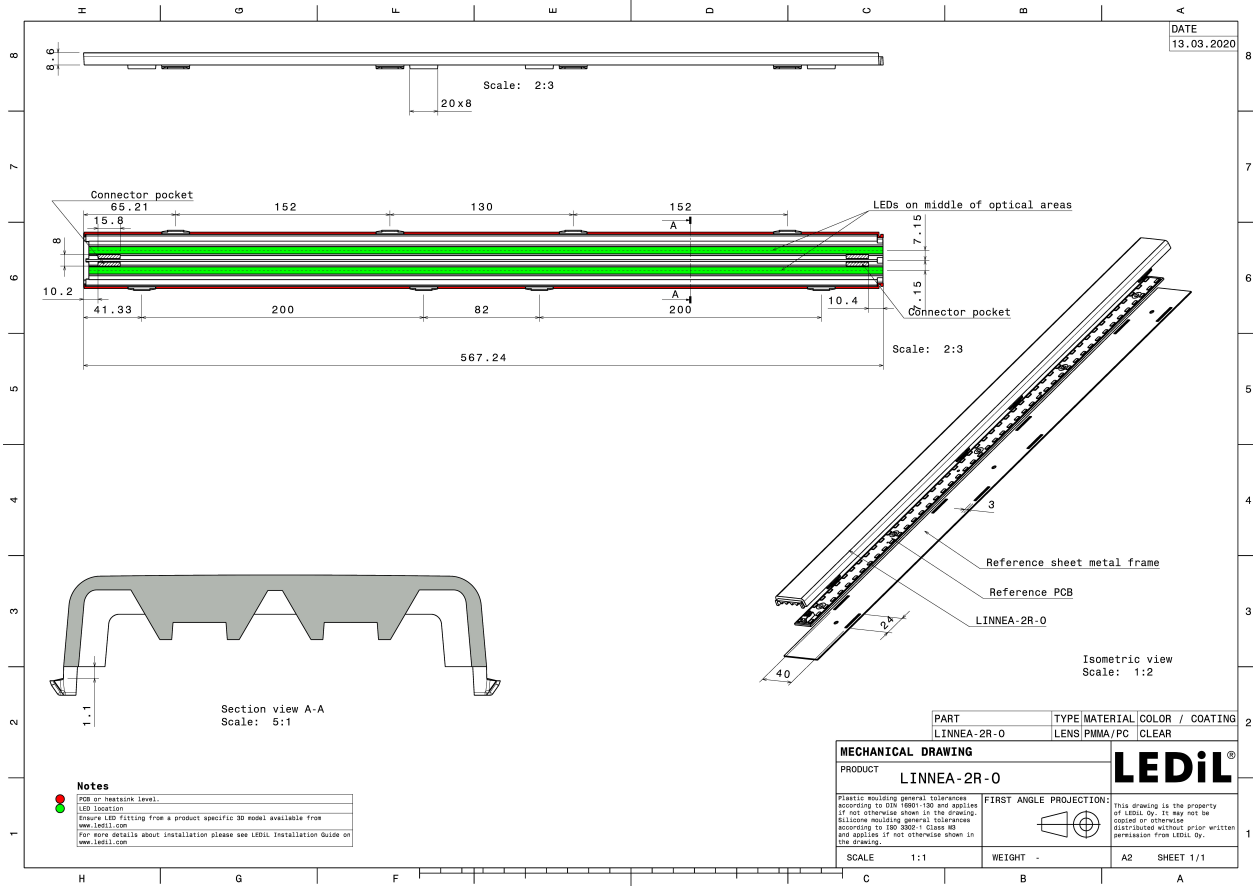
### MATERIALS:

Component	Type	Material	Colour	Finish
LINNEA-2R-O	Linear lens	PMMA	clear	

### ORDERING INFORMATION:

Component	Qty in box	MOQ	MPQ	Box weight (kg)
C17079_LINNEA-2R-O » Box size: 595 x 360 x 150 mm	72	72	8	8.1



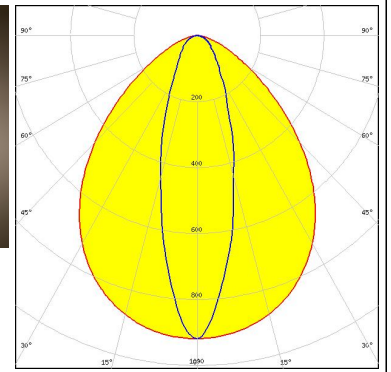
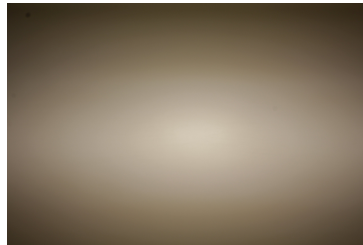


See also our general installation guide: [www.ledil.com/installation\\_guide](http://www.ledil.com/installation_guide)

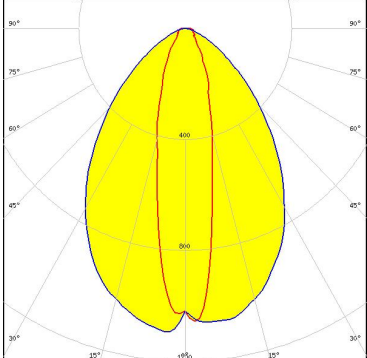
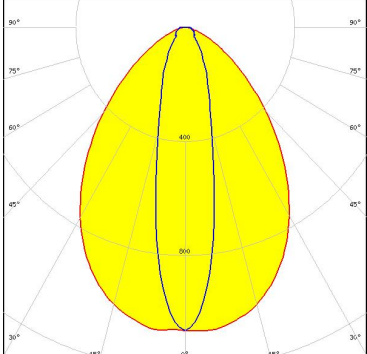
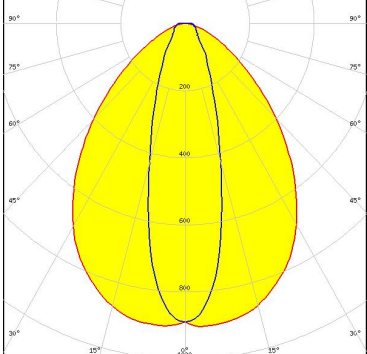
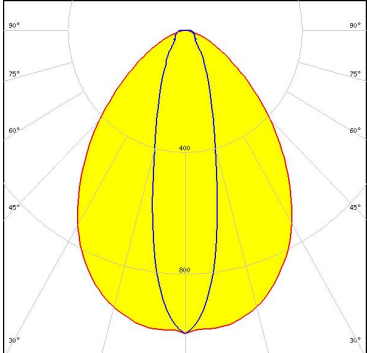
#### OPTICAL RESULTS (MEASURED):

### PHILIPS

LED Fortimo edge 21.5in 9900lm 8xx LV1  
FWHM / FWTM 90.0 + 29.0° / 136.0 + 78.0°  
Efficiency 94 %  
Peak intensity 0.9 cd/lm  
LEDs/each optic 1  
Light colour White  
Required components:



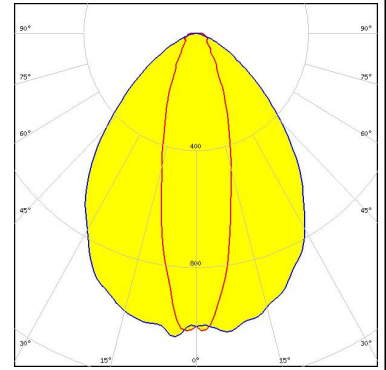
#### OPTICAL RESULTS (SIMULATED):

<p><b>bridgelux.</b></p> <p>LED: Bridgelux SMD 2835            FWHM / FWTM: 77.0 + 22.0° / 124.0 + 69.0°            Efficiency: 90 %            Peak intensity: 1.1 cd/lm            LEDs/each optic: 1            Light colour: White            Required components:</p>	
<p><b>OSRAM</b> Opto Semiconductors</p> <p>LED: Duris E 2835            FWHM / FWTM: 80.0 + 22.0° / 129.0 + 70.0°            Efficiency: 92 %            Peak intensity: 1.1 cd/lm            LEDs/each optic: 1            Light colour: White            Required components:</p>	
<p><b>SAMSUNG</b></p> <p>LED: LM301D            FWHM / FWTM: 84.0 + 29.0° / 133.0 + 76.0°            Efficiency: 92 %            Peak intensity: 0.9 cd/lm            LEDs/each optic: 1            Light colour: White            Required components:</p>	
<p><b>SAMSUNG</b></p> <p>LED: LM301Z Plus            FWHM / FWTM: 82.0 + 26.0° / 130.0 + 72.0°            Efficiency: 92 %            Peak intensity: 1 cd/lm            LEDs/each optic: 1            Light colour: White            Required components:</p>	

#### OPTICAL RESULTS (SIMULATED):

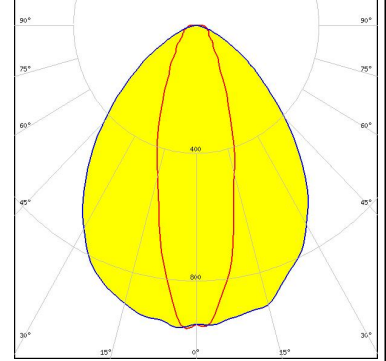
### SAMSUNG

LED LM561B Plus  
 FWHM / FWTM 28.0 + 83.0° / 74.0 + 129.0°  
 Efficiency 91 %  
 Peak intensity 1.1 cd/lm  
 LEDs/each optic 1  
 Light colour White  
 Required components:

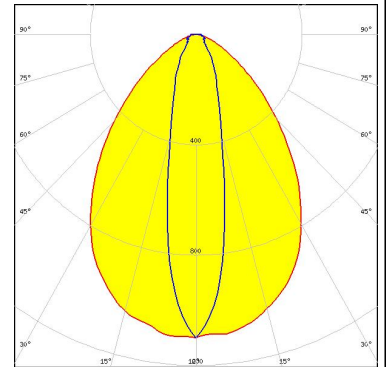


### SAMSUNG

LED LM561C  
 FWHM / FWTM 30.0 + 85.0° / 81.0 + 130.0°  
 Efficiency 91 %  
 Peak intensity 1 cd/lm  
 LEDs/each optic 1  
 Light colour White  
 Required components:



LED SEOUL DC 3030C  
 FWHM / FWTM 80.0 + 22.0° / 128.0 + 68.0°  
 Efficiency 92 %  
 Peak intensity 1.1 cd/lm  
 LEDs/each optic 1  
 Light colour White  
 Required components:



LED SEOUL DC 3528  
 FWHM / FWTM 80.0 + 24.0° / 128.0 + 70.0°  
 Efficiency 92 %  
 Peak intensity 1.1 cd/lm  
 LEDs/each optic 1  
 Light colour White  
 Required components:

