

STRADA-2X2-FS3-PC

Forward throw beam optimized for European tunnels, resulting in extremely efficient lighting with counter-beam method. Variant made from PC.

SPECIFICATION:

Dimensions	50.0 x 50.0 mm
Height	12 mm
Fastening	pin, screw
ROHS compliant	yes ⓘ

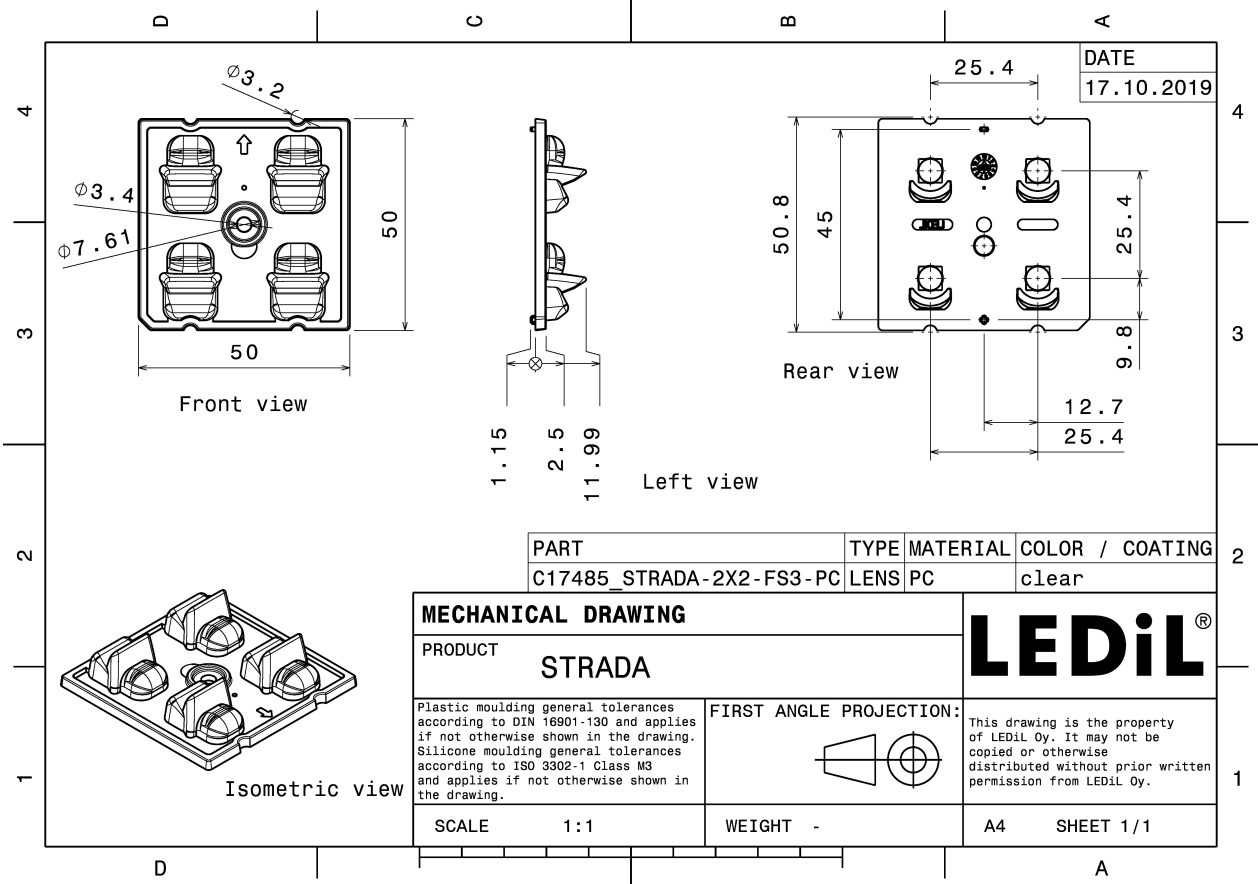


MATERIALS:

Component	Type	Material	Colour	Finish
STRADA-2X2-FS3-PC	Multi-lens	PC	clear	

ORDERING INFORMATION:

Component	Qty in box	MOQ	MPQ	Box weight (kg)
C17485_STRADA-2X2-FS3-PC » Box size: 480 x 280 x 300 mm	800	160	160	7.1

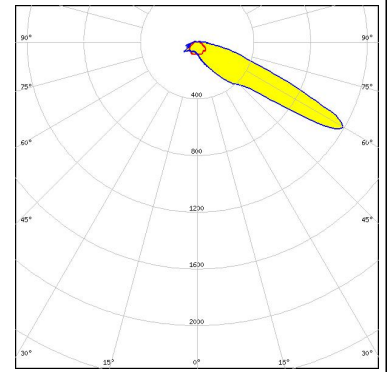


See also our general installation guide: www.ledil.com/installation_guide

OPTICAL RESULTS (MEASURED):



LED	XP-G3
FWHM / FWTM	Asymmetric
Efficiency	86 %
Peak intensity	1.5 cd/lm
LEDs/each optic	1
Light colour	White
Required components:	

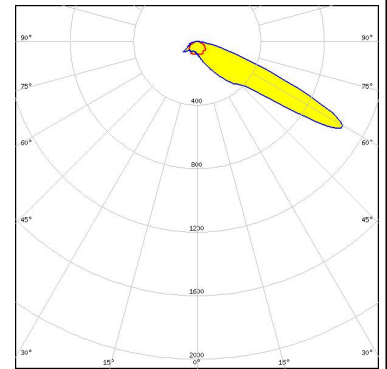


OPTICAL RESULTS (SIMULATED):

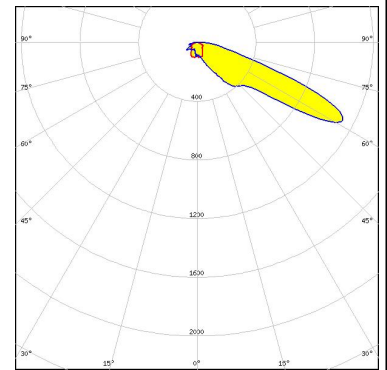


LED XP-G3
 FWHM / FWTM Asymmetric
 Efficiency 71 %
 Peak intensity 1.1 cd/lm
 LEDs/each optic 1
 Light colour White
 Required components:

Protective plate, glass

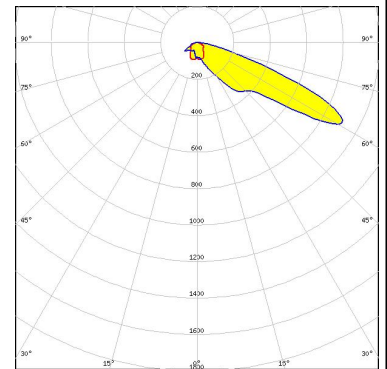


LED XP-L2
 FWHM / FWTM Asymmetric
 Efficiency 75 %
 Peak intensity 1.1 cd/lm
 LEDs/each optic 1
 Light colour White
 Required components:



LED XP-L2
 FWHM / FWTM Asymmetric
 Efficiency 62 %
 Peak intensity 0.9 cd/lm
 LEDs/each optic 1
 Light colour White
 Required components:

Protective plate, glass



LED LH351D
 FWHM / FWTM Asymmetric
 Efficiency 80 %
 Peak intensity 1.1 cd/lm
 LEDs/each optic 1
 Light colour White
 Required components:

