

EMERALD-ER1-PC

Rectangular beam for escape routes with up to 5 m mounting height.

SPECIFICATION:

Dimensions	Ø 21.6 mm
Height	7.5 mm
Fastening	glue, pin
ROHS compliant	yes ⓘ

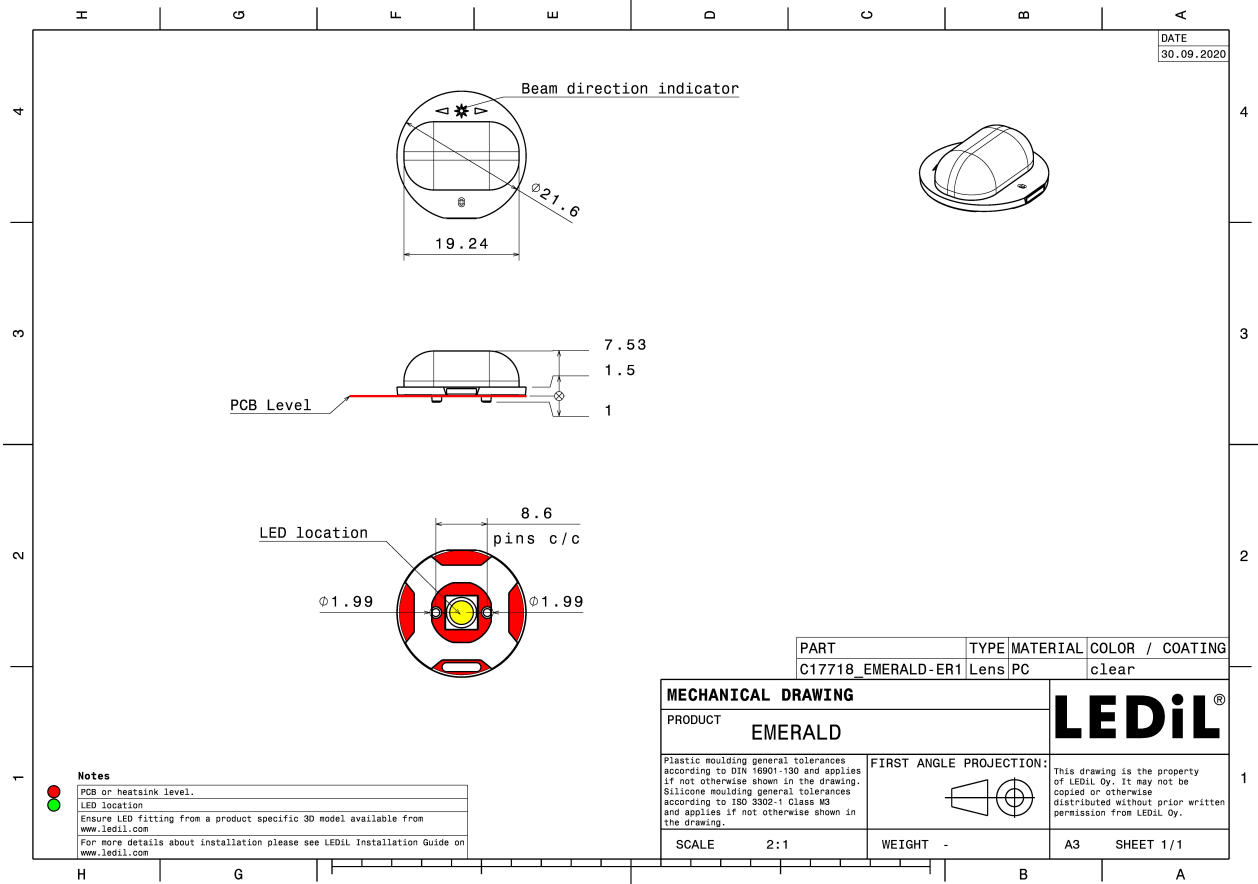


MATERIALS:

Component	Type	Material	Colour	Finish
EMERALD-ER1-PC	Single lens	PC	clear	

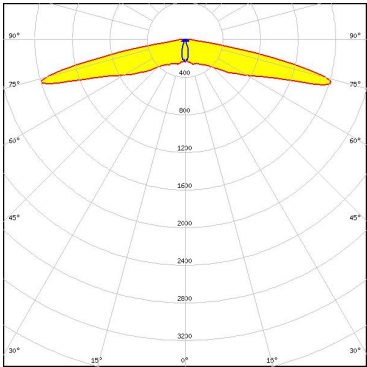
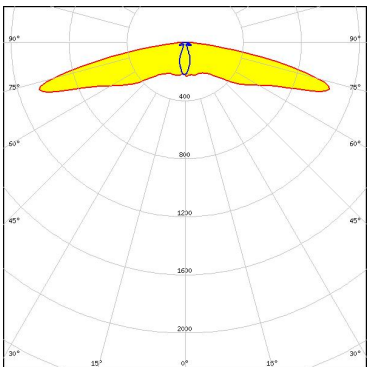
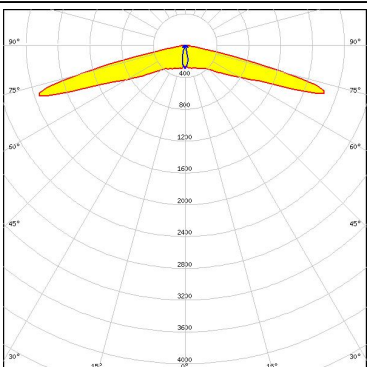
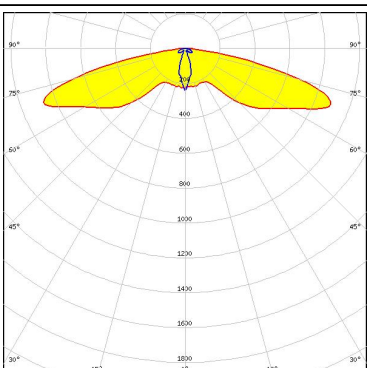
ORDERING INFORMATION:

Component	Qty in box	MOQ	MPQ	Box weight (kg)
C17718_EMERALD-ER1-PC » Box size: 480 x 280 x 300 mm	3456	288	144	7.0



See also our general installation guide: www.ledil.com/installation_guide

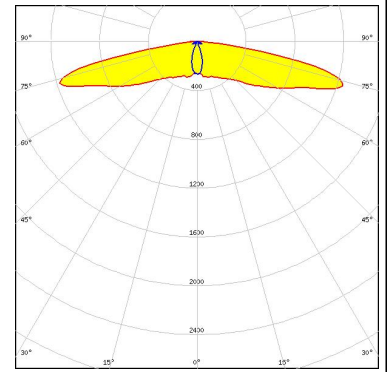
OPTICAL RESULTS (SIMULATED):

<p>CREE LEDs</p> <p>LED: XP-G3 FWHM / FWTM: 32.0 + 157.0° / 154.0 + 166.0° Efficiency: 86 % Peak intensity: 1.6 cd/lm LEDs/each optic: 1 Light colour: White Required components:</p>	
<p>CREE LEDs</p> <p>LED: XP-L2 FWHM / FWTM: Asymmetric Efficiency: 86 % Peak intensity: 1.1 cd/lm LEDs/each optic: 1 Light colour: White Required components:</p>	
<p>CREE LEDs</p> <p>LED: XT-E FWHM / FWTM: Asymmetric Efficiency: 88 % Peak intensity: 1.9 cd/lm LEDs/each optic: 1 Light colour: White Required components:</p>	
<p>LUMILEDS</p> <p>LED: LUXEON 5050 Square LES FWHM / FWTM: 156.0 + 32.0° / 168.0 + 157.0° Efficiency: 88 % Peak intensity: 0.9 cd/lm LEDs/each optic: 1 Light colour: White Required components:</p>	

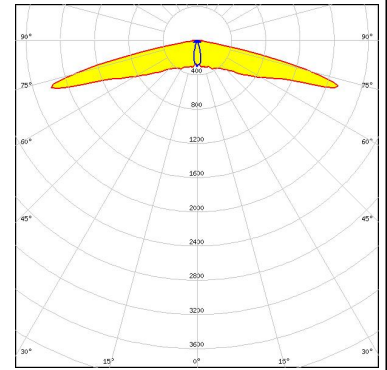
OPTICAL RESULTS (SIMULATED):



LED LUXEON HL2X
FWHM / FWTM 161.0 + 35.0° / 169.0 + 141.0°
Efficiency 88 %
Peak intensity 1.2 cd/lm
LEDs/each optic 1
Light colour White
Required components:



LED OSLOM Square CSSRM2/CSSRM3
FWHM / FWTM 154.0 + 28.0° / 161.0 + 137.0°
Efficiency 90 %
Peak intensity 1.8 cd/lm
LEDs/each optic 1
Light colour White
Required components:



LED Z5M4
FWHM / FWTM 151.0 + 24.0° / 162.0 + 133.0°
Efficiency 89 %
Peak intensity 1.5 cd/lm
LEDs/each optic 1
Light colour White
Required components:

