

DAISY-8X1-M

~35° wide beam

SPECIFICATION:

Dimensions	305.2 x 38.1 mm
Height	20.3 mm
Fastening	pin, screw, clips
ROHS compliant	yes ⓘ

MATERIALS:

Component	Type	Material	Colour	Finish
C17819_DAISY-4X1-M-US	Linear lens	PMMA	clear	
C17172_DAISY-8X1-SHD-MATT-WHT	Shade	PC	white	matt
C17171_DAISY-8X1-SHD-MATT	Shade	PC	black	matt

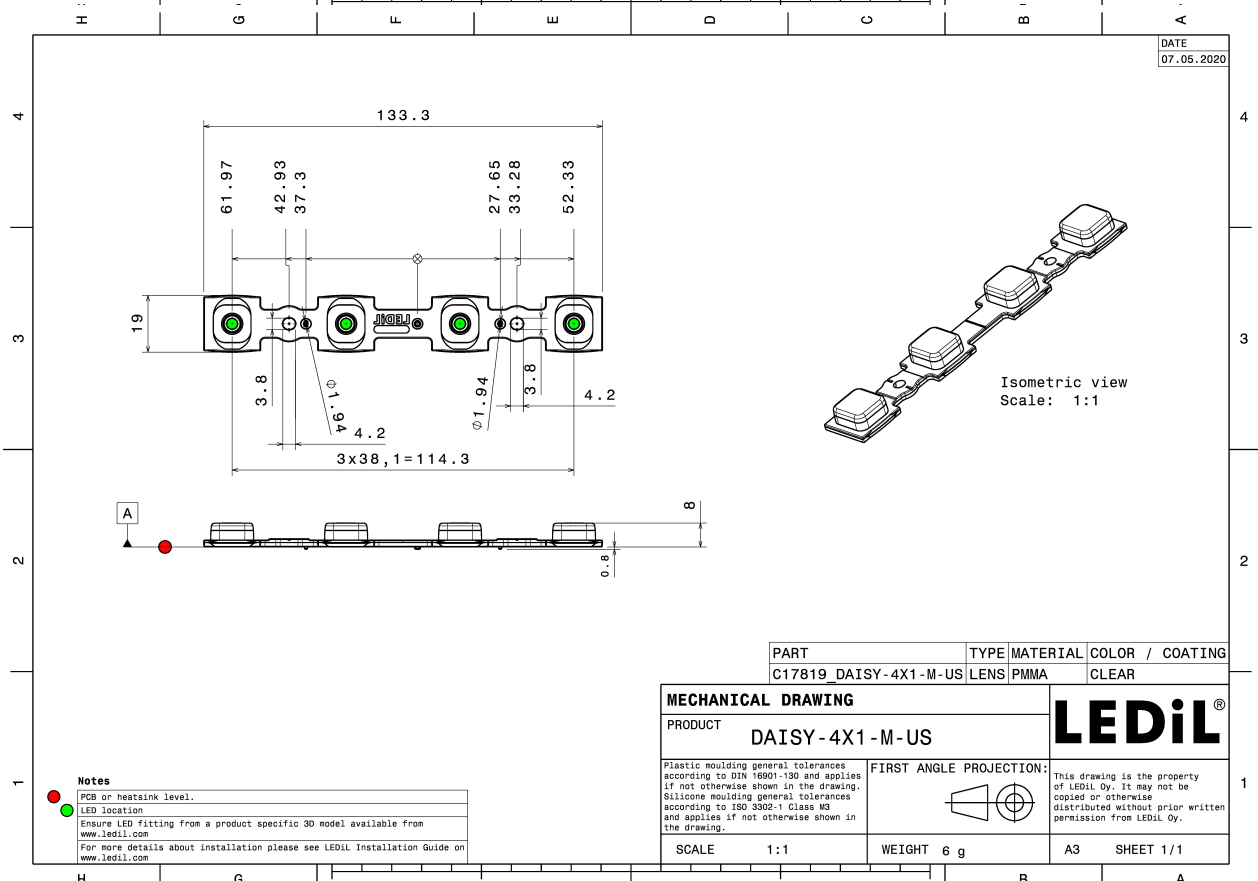
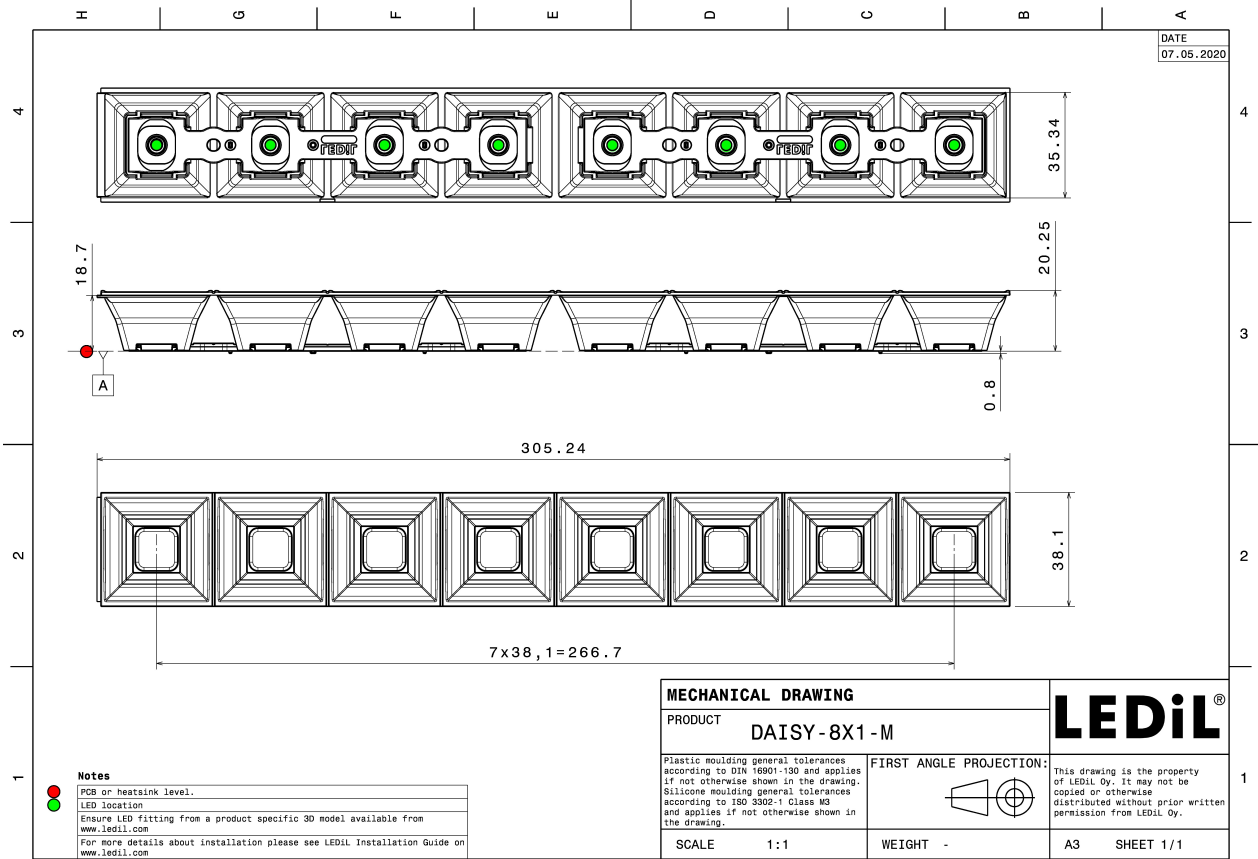
ORDERING INFORMATION:

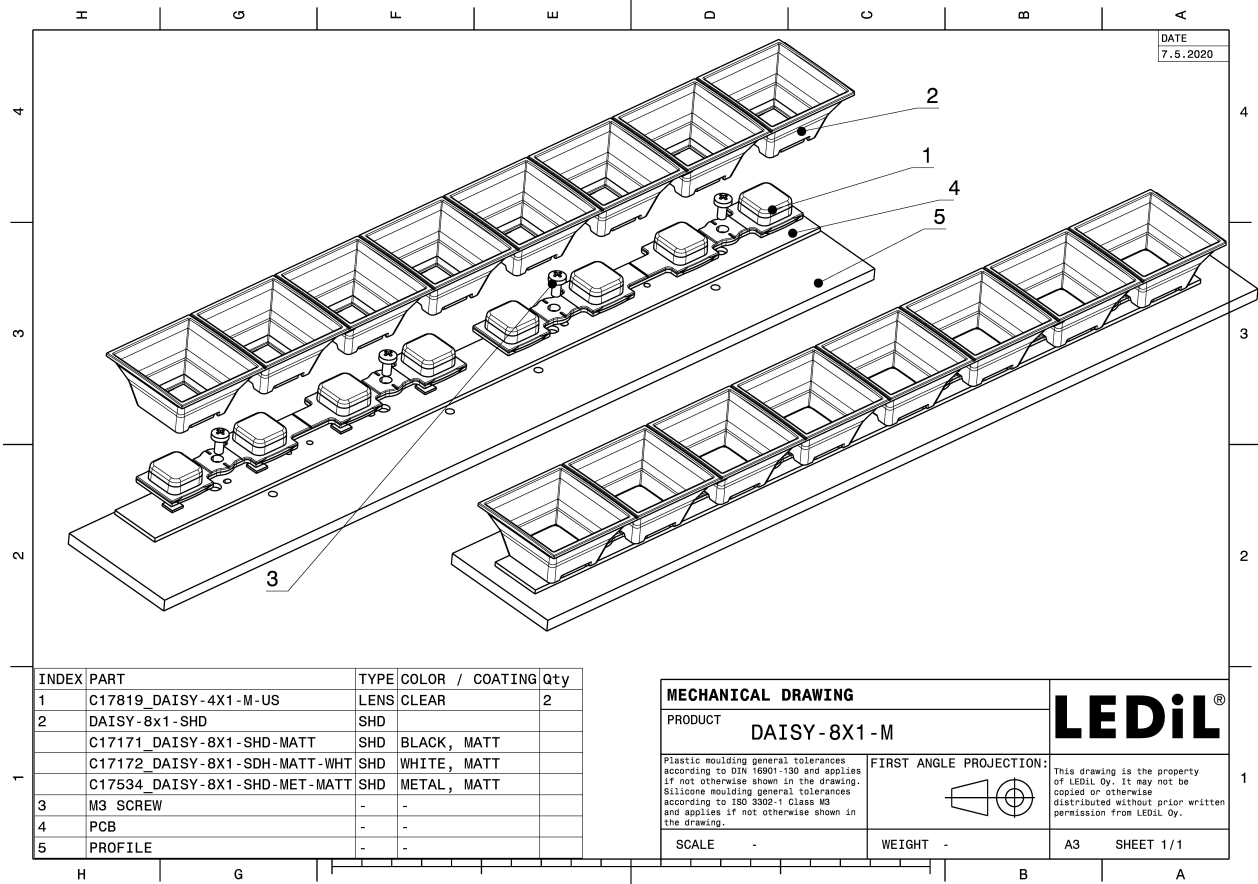
Quantities for one set:

Linear lens	2
Shade	1

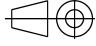


Component		Qty in box	MOQ	MPQ	Box weight (kg)
C17819_DAISY-4X1-M-US » Box size: 480 x 280 x 300 mm	Linear lens	504	84	84	6.2
C17171_DAISY-8X1-SHD-MATT » Box size: 400 x 300 x 300 mm	Shade	84	42	42	4.0
C17172_DAISY-8X1-SHD-MATT-WHT » Box size: 400 x 300 x 300 mm	Shade	84	42	42	4.2





INDEX	PART	TYPE	COLOR / COATING	Qty
1	C17819_DAISY-4X1-M-US	LENS	CLEAR	2
2	DAISY-8x1-SHD	SHD		
	C17171_DAISY-8X1-SHD-MATT	SHD	BLACK, MATT	
	C17172_DAISY-8X1-SDH-MATT-WHT	SHD	WHITE, MATT	
	C17534_DAISY-8X1-SHD-MET-MATT	SHD	METAL, MATT	
3	M3 SCREW	-	-	
4	PCB	-	-	
5	PROFILE	-	-	

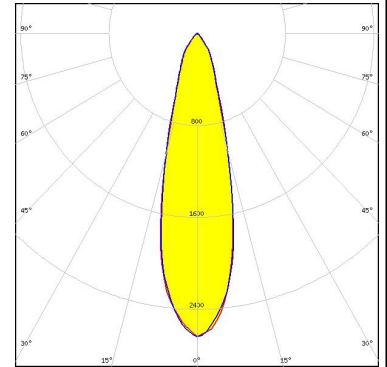
MECHANICAL DRAWING		LEDiL®
PRODUCT DAISY-8X1-M		
Plastic moulding general tolerances according to DIN 16801-130 and applies if not otherwise shown in the drawing. Silicone moulding general tolerances according to ISO 3302-1 Class M3 and applies if not otherwise shown in the drawing.	FIRST ANGLE PROJECTION: 	This drawing is the property of LEDiL Oy. It may not be copied or otherwise distributed without prior written permission from LEDiL Oy.
SCALE -	WEIGHT -	A3 SHEET 1/1

See also our general installation guide: www.ledil.com/installation_guide

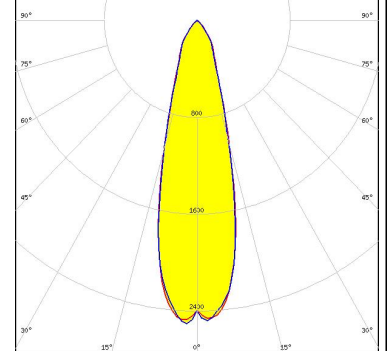
OPTICAL RESULTS (SIMULATED):



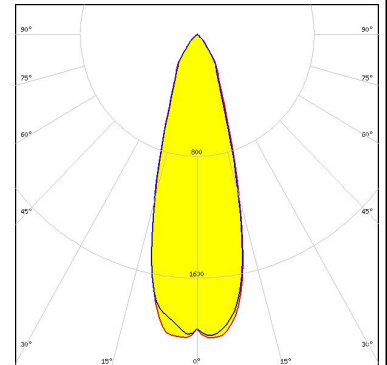
LED J Series 5050 Round LES
 FWHM / FWTM 26.0° / 59.0 + 60.0°
 Efficiency 86 %
 Peak intensity 2.7 cd/lm
 LEDs/each optic 1
 Light colour White
 Required components:
 C17171_DAISSY-8X1-SHD-MATT



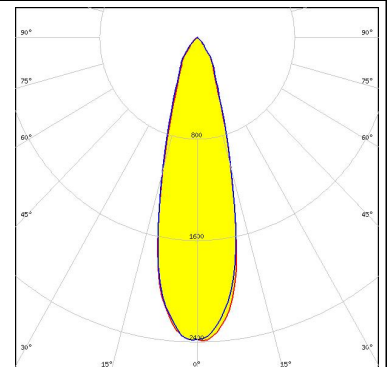
LED J Series 5050 Round LES
 FWHM / FWTM 28.0° / 64.0 + 62.0°
 Efficiency 87 %
 Peak intensity 2.5 cd/lm
 LEDs/each optic 1
 Light colour White
 Required components:
 C17171_DAISSY-8X1-SHD-MATT



LED LUXEON 5050 Square LES
 FWHM / FWTM 32.0° / 70.0°
 Efficiency 86 %
 Peak intensity 2 cd/lm
 LEDs/each optic 1
 Light colour White
 Required components:
 C17171_DAISSY-8X1-SHD-MATT



LED LUXEON 5050 Square LES
 FWHM / FWTM 28.0° / 63.0 + 66.0°
 Efficiency 87 %
 Peak intensity 2.4 cd/lm
 LEDs/each optic 1
 Light colour White
 Required components:
 C17171_DAISSY-8X1-SHD-MATT

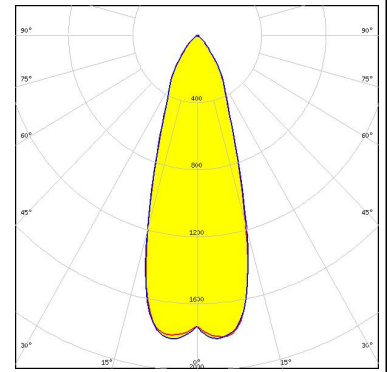


OPTICAL RESULTS (SIMULATED):

OSRAM

Opto Semiconductors

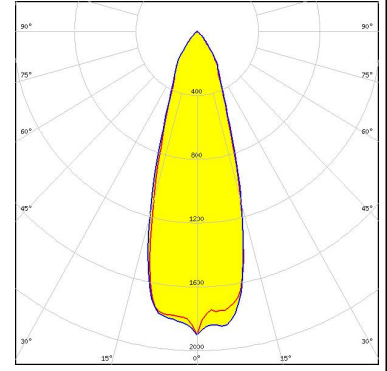
LED Duris E 2835
 FWHM / FWTM 36.0° / 76.0°
 Efficiency 93 %
 Peak intensity 1.8 cd/lm
 LEDs/each optic 2
 Light colour White
 Required components:
 C17171_DAISY-8X1-SHD-MATT



OSRAM

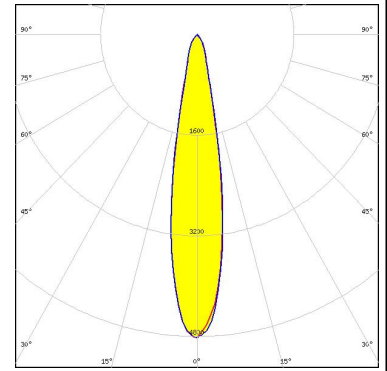
Opto Semiconductors

LED Duris S8
 FWHM / FWTM 32.0 + 34.0° / 70.0 + 72.0°
 Efficiency 86 %
 Peak intensity 1.9 cd/lm
 LEDs/each optic 1
 Light colour White
 Required components:
 C17171_DAISY-8X1-SHD-MATT



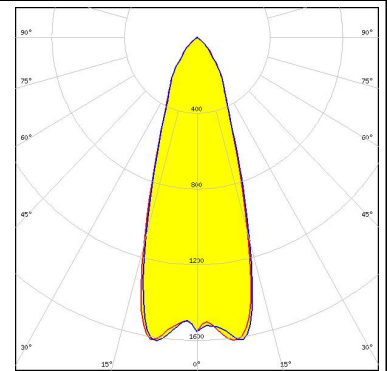
SAMSUNG

LED LH231B
 FWHM / FWTM 20.0° / 39.0 + 38.0°
 Efficiency 86 %
 Peak intensity 4.8 cd/lm
 LEDs/each optic 1
 Light colour White
 Required components:
 C17171_DAISY-8X1-SHD-MATT



SAMSUNG

LED LM28xB Series
 FWHM / FWTM 36.0° / 76.0°
 Efficiency 83 %
 Peak intensity 1.6 cd/lm
 LEDs/each optic 2
 Light colour White
 Required components:
 C17171_DAISY-8X1-SHD-MATT



OPTICAL RESULTS (SIMULATED):

SAMSUNG

LED	LM28xB Series
FWHM / FWTM	18.0° / 36.0 + 35.0°
Efficiency	89 %
Peak intensity	5.7 cd/lm
LEDs/each optic	1
Light colour	White
Required components:	
	C17171_DAISY-8X1-SHD-MATT

