

## EMERALD-FS-PC

Asymmetric beam for emergency equipment lighting.

### SPECIFICATION:

Dimensions	Ø 21.6 mm
Height	8.1 mm
Fastening	glue, pin
ROHS compliant	yes ⓘ

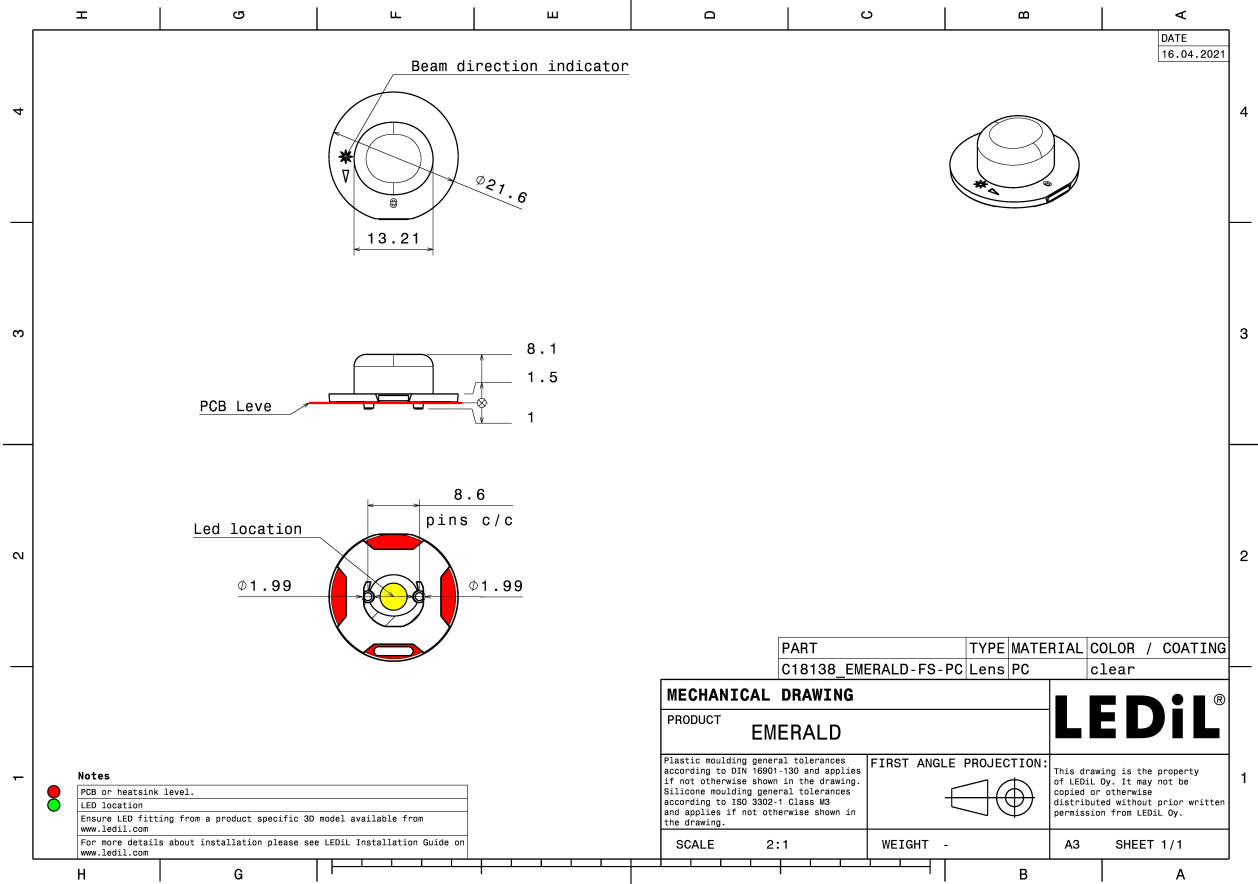


### MATERIALS:

Component	Type	Material	Colour	Finish
EMERALD-FS-PC	Single lens	PC	clear	

### ORDERING INFORMATION:

Component	Qty in box	MOQ	MPQ	Box weight (kg)
C18138_EMERALD-FS-PC » Box size: 480 x 280 x 300 mm	3456	288	144	5.7

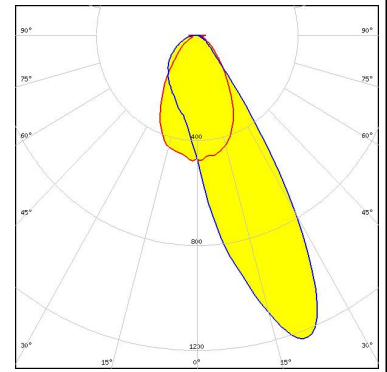


See also our general installation guide: [www.ledil.com/installation\\_guide](http://www.ledil.com/installation_guide)

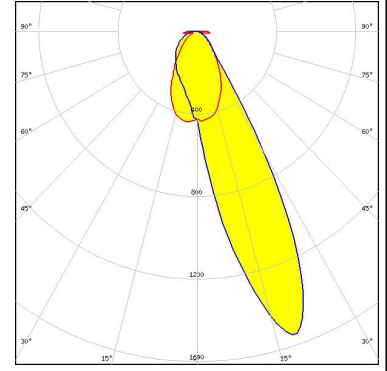
#### OPTICAL RESULTS (SIMULATED):



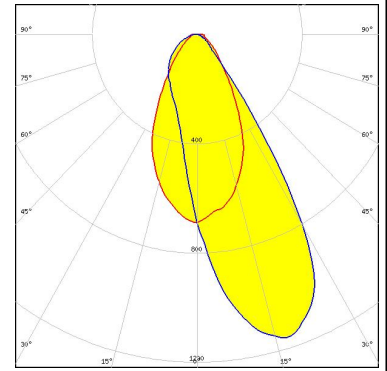
LED XP-G3  
 FWHM / FWTM Asymmetric  
 Efficiency 88 %  
 Peak intensity 1.2 cd/lm  
 LEDs/each optic 1  
 Light colour White  
 Required components:



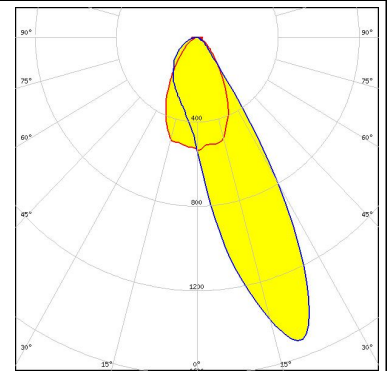
LED XT-E  
 FWHM / FWTM Asymmetric  
 Efficiency 89 %  
 Peak intensity 1.6 cd/lm  
 LEDs/each optic 1  
 Light colour White  
 Required components:



LED LUXEON 5050 Square LES  
 FWHM / FWTM Asymmetric  
 Efficiency 91 %  
 Peak intensity 1.2 cd/lm  
 LEDs/each optic 1  
 Light colour White  
 Required components:



LED OSOLON Square CSSRM2/CSSRM3  
 FWHM / FWTM Asymmetric  
 Efficiency 91 %  
 Peak intensity 1.5 cd/lm  
 LEDs/each optic 1  
 Light colour White  
 Required components:



#### OPTICAL RESULTS (SIMULATED):

