

ADELIA-110-ADAPTER-B

Adapter for ADELIA reflectors. Compatible with BJB and B+W connectors.

SPECIFICATION:

Dimensions	Ø 54.0 mm
Height	0.5 mm
ROHS compliant	yes ⓘ

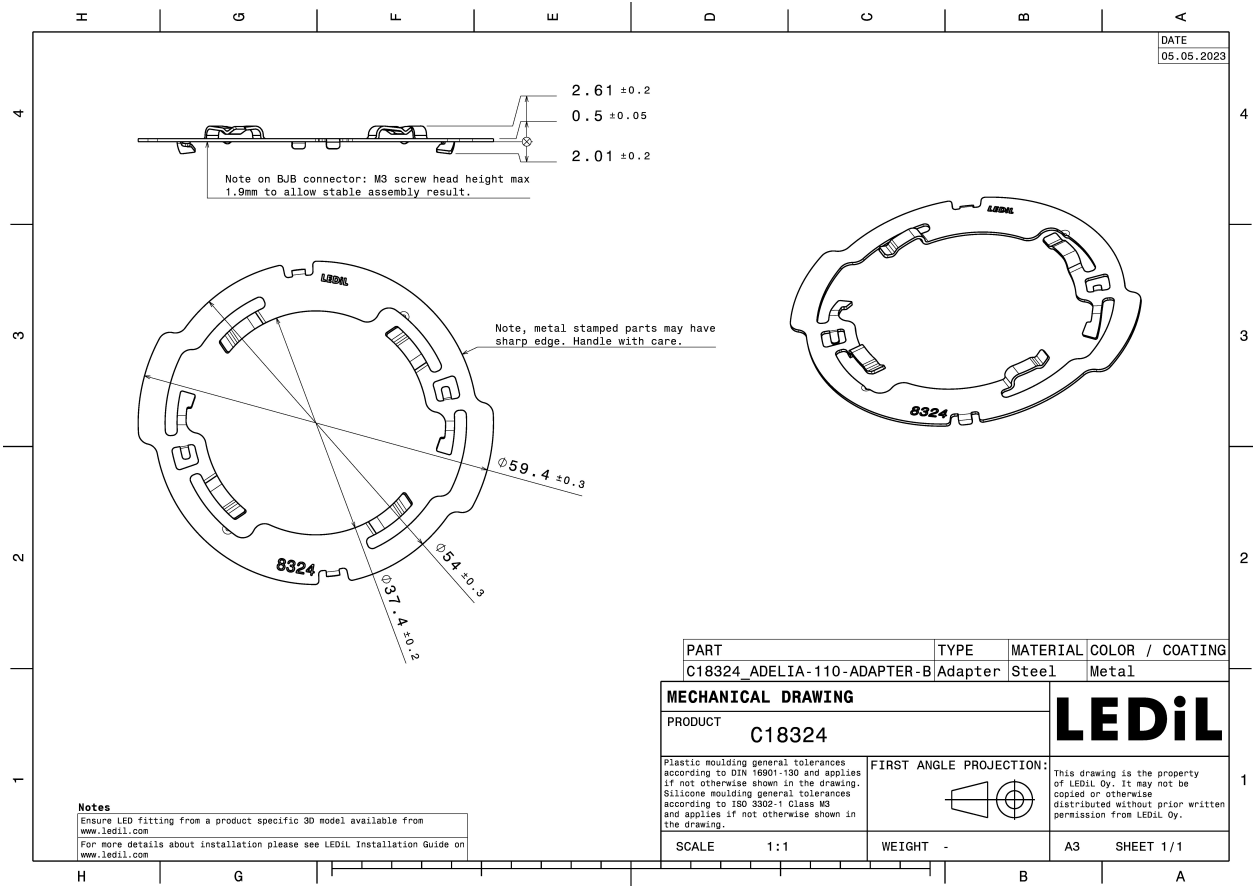


MATERIALS:

Component	Type	Material	Colour	Finish
ADELIA-110-ADAPTER-B	Accessory	AISI301	metal	

ORDERING INFORMATION:

Component	Qty in box	MOQ	MPQ	Box weight (kg)
C18324_ADELIA-110-ADAPTER-B » Box size: 370 x 300 x 280 mm	2000	100	100	9.3



See also our general installation guide: www.ledil.com/installation_guide

AVAILABLE LEDiL PRODUCTS:

Product name	Description
C18319_ADELIA-110-S	~15° spot beam
C18320_ADELIA-110-M	~24° medium beam
C18321_ADELIA-110-W	~36° wide beam
C18658_ADELIA-110-WW	~55° wide beam
C18984_ADELIA-110-WW2	~65° wide beam