

DAISY-MINI-3X1-W

~55° wide beam

TECHNICAL SPECIFICATIONS:

Dimensions	x mm
Height	0 mm
ROHS compliant	yes ⓘ

MATERIAL SPECIFICATIONS:

Component	Type	Material	Colour	Finish
C18504_DAISSY-MINI-3X1-W	Linear lens	PMMA	clear	
C18509_DAISSY-MINI-3X1-SHD-MATT	Accessory	PC	black	matt
C18508_DAISSY-MINI-3X1-SHD	Shade	PC	black	gloss

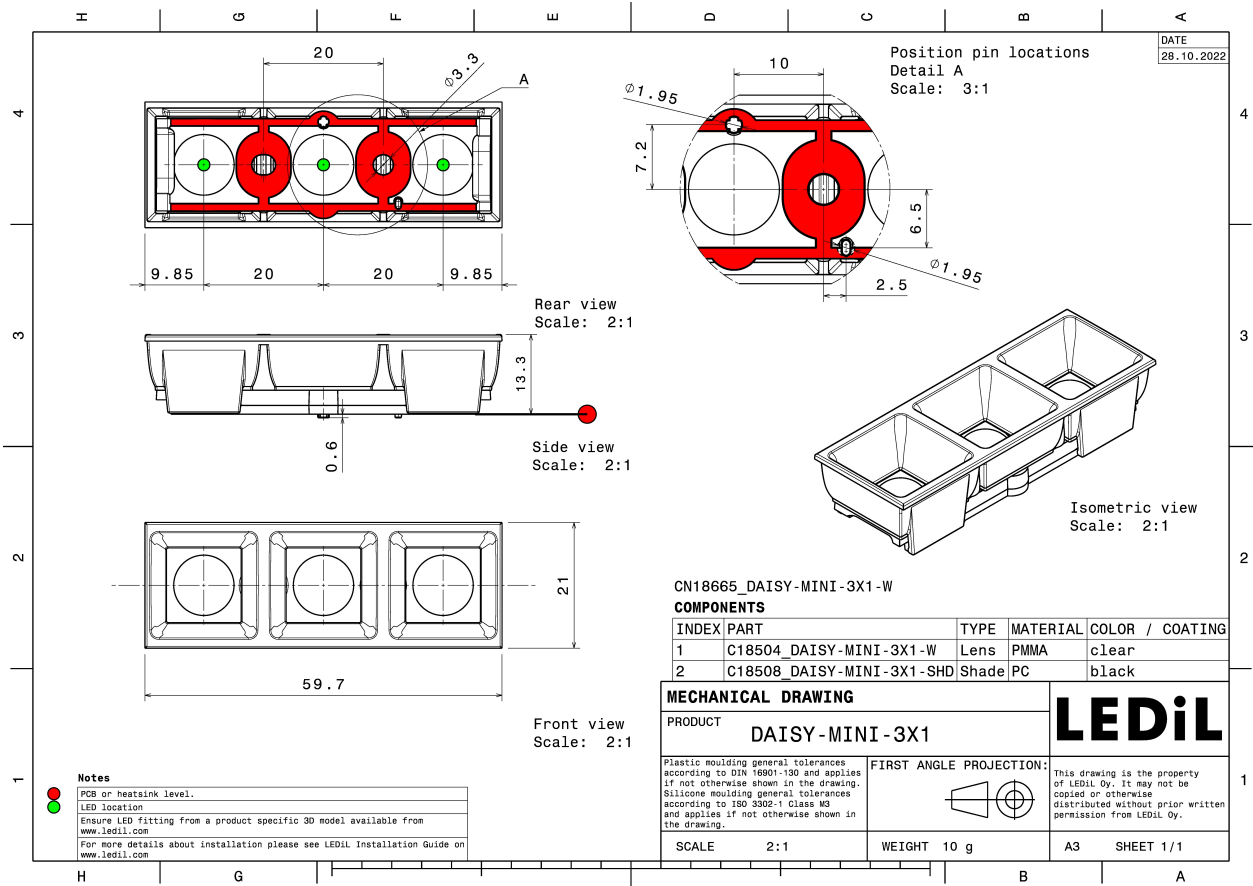
ORDERING INFORMATION:

Quantities for one set:

Linear lens	1
Shade	1



Component		Qty in box	MOQ	MPQ	Box weight (kg)
C18504_DAISSY-MINI-3X1-W » Box size: 480 x 280 x 300 mm	Linear lens	1890	210	70	8.0
C18508_DAISSY-MINI-3X1-SHD » Box size: 476 x 273 x 226 mm	Shade	945	210	5	4.5
C18509_DAISSY-MINI-3X1-SHD-MATT » Box size: 476 x 273 x 226 mm	Accessory	945	210	5	4.5

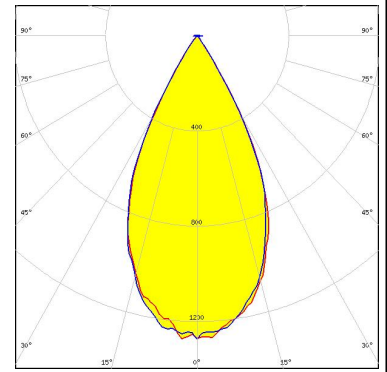


See also our general installation guide: www.ledil.com/installation_guide

PHOTOMETRIC DATA (SIMULATED):

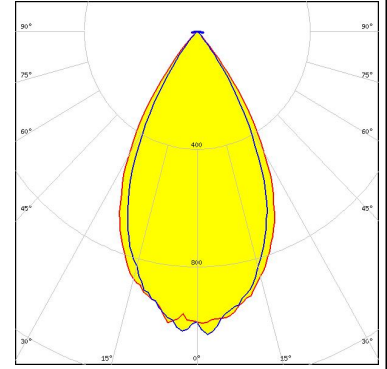
SAMSUNG

LED LM28xB Series
FWHM / FWTM 52.0° / 68.0°
Efficiency 84 %
Peak intensity 1.3 cd/lm
LEDs/each optic 1
Light colour White
Required components:
C18509_DAISSY-MINI-3X1-SHD-MATT



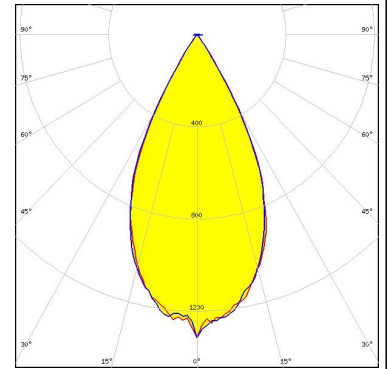
SAMSUNG

LED LM28xB Series
FWHM / FWTM 58.0° / 82.0°
Efficiency 82 %
Peak intensity 1 cd/lm
LEDs/each optic 2
Light colour White
Required components:
C18509_DAISSY-MINI-3X1-SHD-MATT



SAMSUNG

LED LM28xB Series
FWHM / FWTM 51.0° / 68.0°
Efficiency 84 %
Peak intensity 1.3 cd/lm
LEDs/each optic 1
Light colour White
Required components:
C18508_DAISSY-MINI-3X1-SHD



SAMSUNG

LED LM28xB Series
FWHM / FWTM 58.0° / 82.0°
Efficiency 82 %
Peak intensity 1 cd/lm
LEDs/each optic 2
Light colour White
Required components:
C18508_DAISSY-MINI-3X1-SHD

