

AMBER-2X2-T2

IESNA Type II (medium) beam applicable for European P-class standard pedestrian lighting and M-class roads.

TECHNICAL SPECIFICATIONS:

Dimensions	50.0 x 50.0 mm
Height	7.7 mm
Fastening	glue, pin, screw
ROHS compliant	yes ⓘ

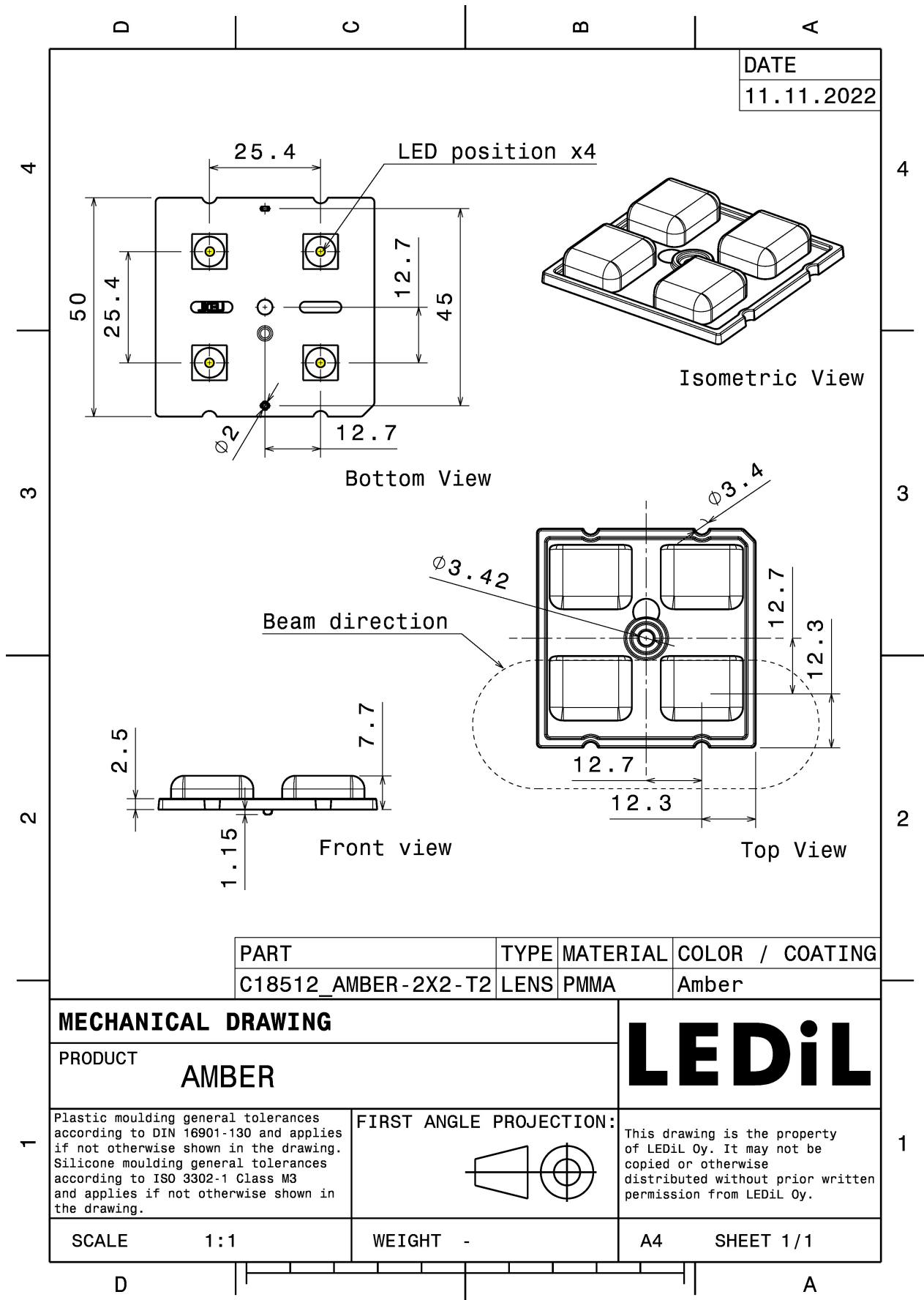


MATERIAL SPECIFICATIONS:

Component	Type	Material	Colour	Finish
AMBER-2X2-T2	Multi-lens	PMMA	amber	


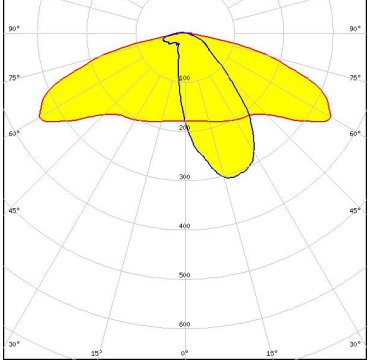

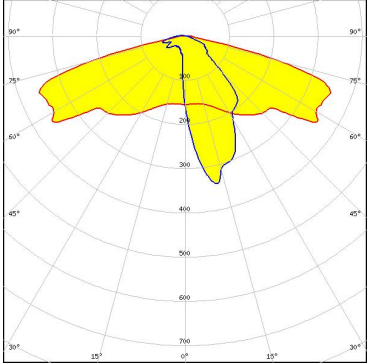
ORDERING INFORMATION:

Component	Qty in box	MOQ	MPQ	Box weight (kg)
C18512_AMBER-2X2-T2 » Box size: 480 x 280 x 300 mm	800	160	160	8.2



See also our general installation guide: www.ledil.com/installation_guide

PHOTOMETRIC DATA (MEASURED):

		
LED	LUXEON 5050 Square LES	
FWHM / FWTM	Asymmetric	
Efficiency	75 %	
Peak intensity	0.5 cd/lm	
LEDs/each optic	1	
Light colour	White	
Required components:		
		
LED	OSLON Square CSSRM2/CSSRM3	
FWHM / FWTM	Asymmetric	
Efficiency	73 %	
Peak intensity	0.8 cd/lm	
LEDs/each optic	1	
Light colour	White	
Required components:		