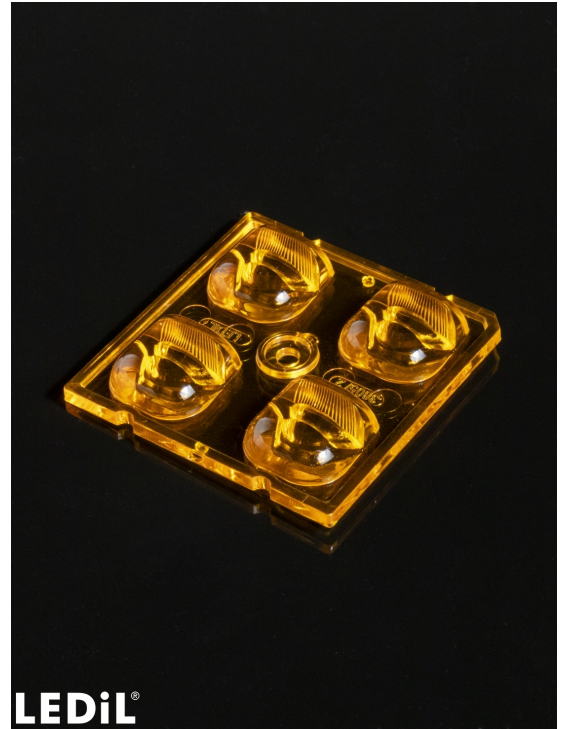


AMBER-2X2-T4

IESNA Type IV beam for wider roads and large outdoor area.

TECHNICAL SPECIFICATIONS:

Dimensions	50.0 x 50.0 mm
Height	7.7 mm
Fastening	pin, screw
ROHS compliant	yes ⓘ

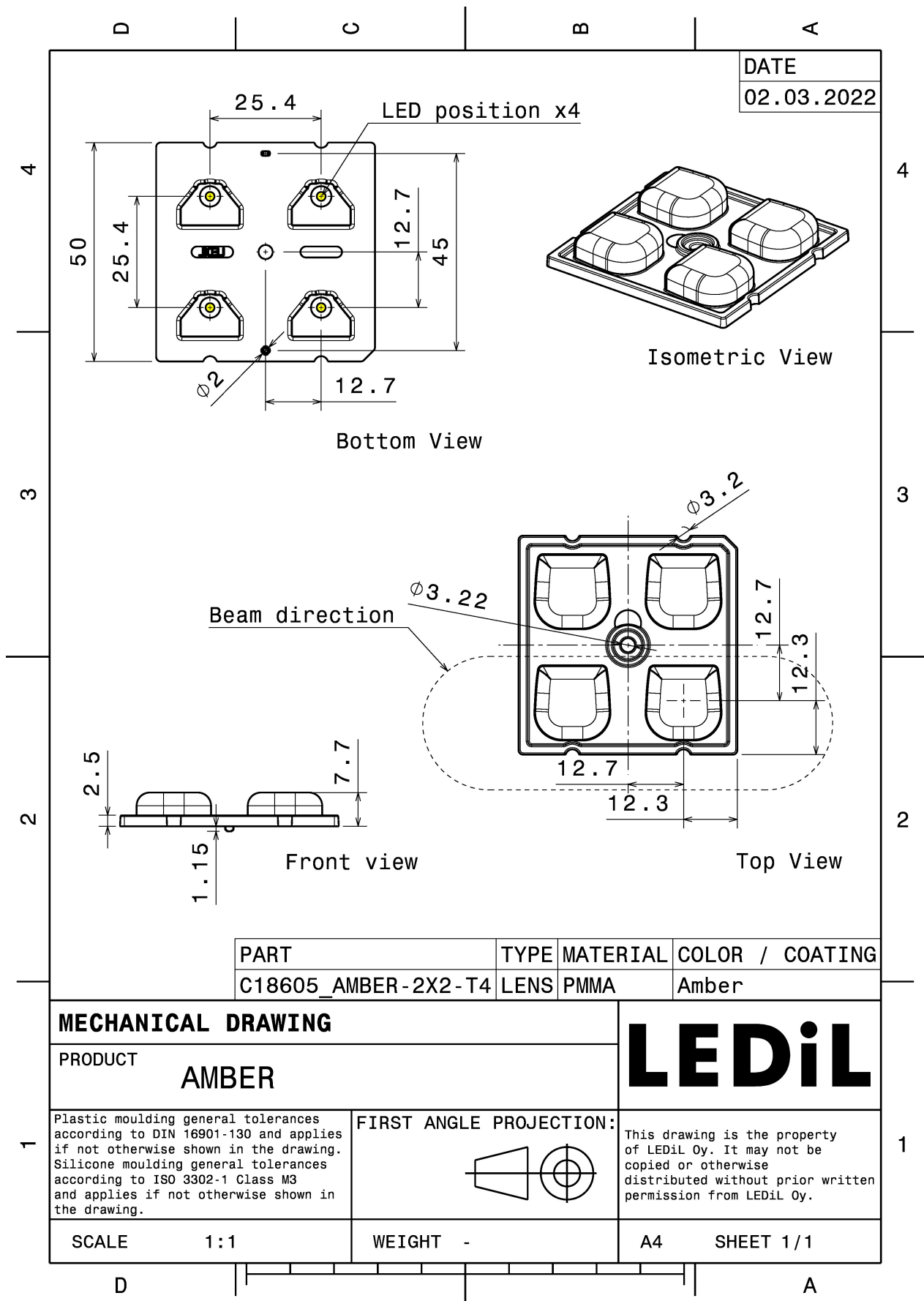


MATERIAL SPECIFICATIONS:

Component	Type	Material	Colour	Finish
AMBER-2X2-T4	Multi-lens	PMMA	amber	


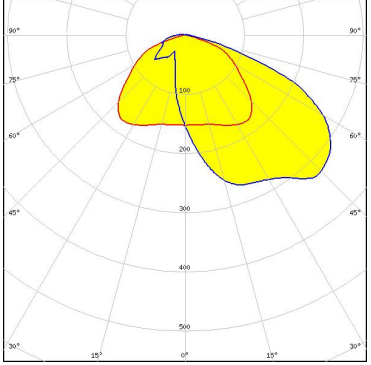

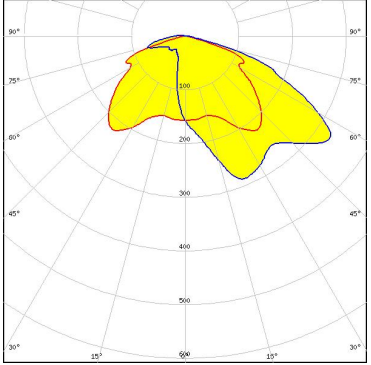
ORDERING INFORMATION:

Component	Qty in box	MOQ	MPQ	Box weight (kg)
C18605_AMBER-2X2-T4 » Box size: 480 x 280 x 300 mm	800	160	160	7.6



See also our general installation guide: www.ledil.com/installation_guide

PHOTOMETRIC DATA (MEASURED):

		
LED	LUXEON 5050 Square LES	
FWHM / FWTM	Asymmetric	
Efficiency	77 %	
Peak intensity	0.4 cd/lm	
LEDs/each optic	1	
Light colour	White	
Required components:		
		
LED	OSLON Square CSSRM2/CSSRM3	
FWHM / FWTM	Asymmetric	
Efficiency	76 %	
Peak intensity	0.5 cd/lm	
LEDs/each optic	1	
Light colour	White	
Required components:		