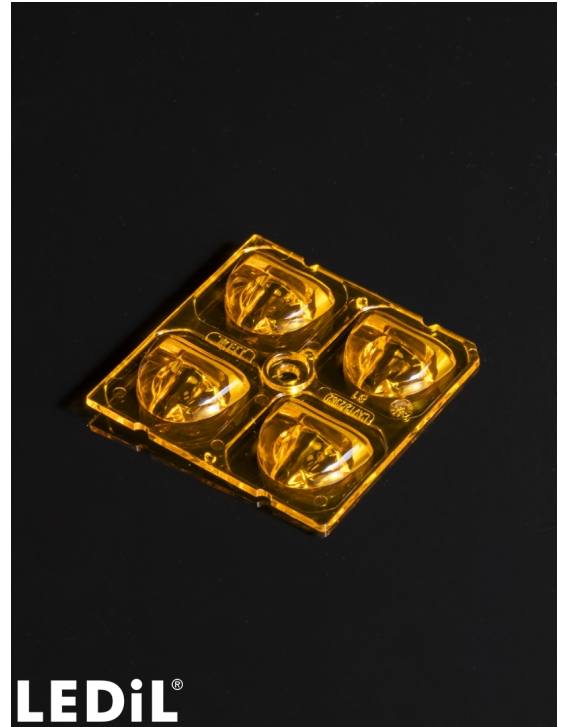


AMBER-2X2-DWC

Universal road lighting beam with excellent mixed illuminance and luminance uniformity. Typically IESNA Type III (medium).

SPECIFICATION:

Dimensions	50.0 x 50.0 mm
Height	6 mm
Fastening	glue, pin, screw
ROHS compliant	yes ⓘ

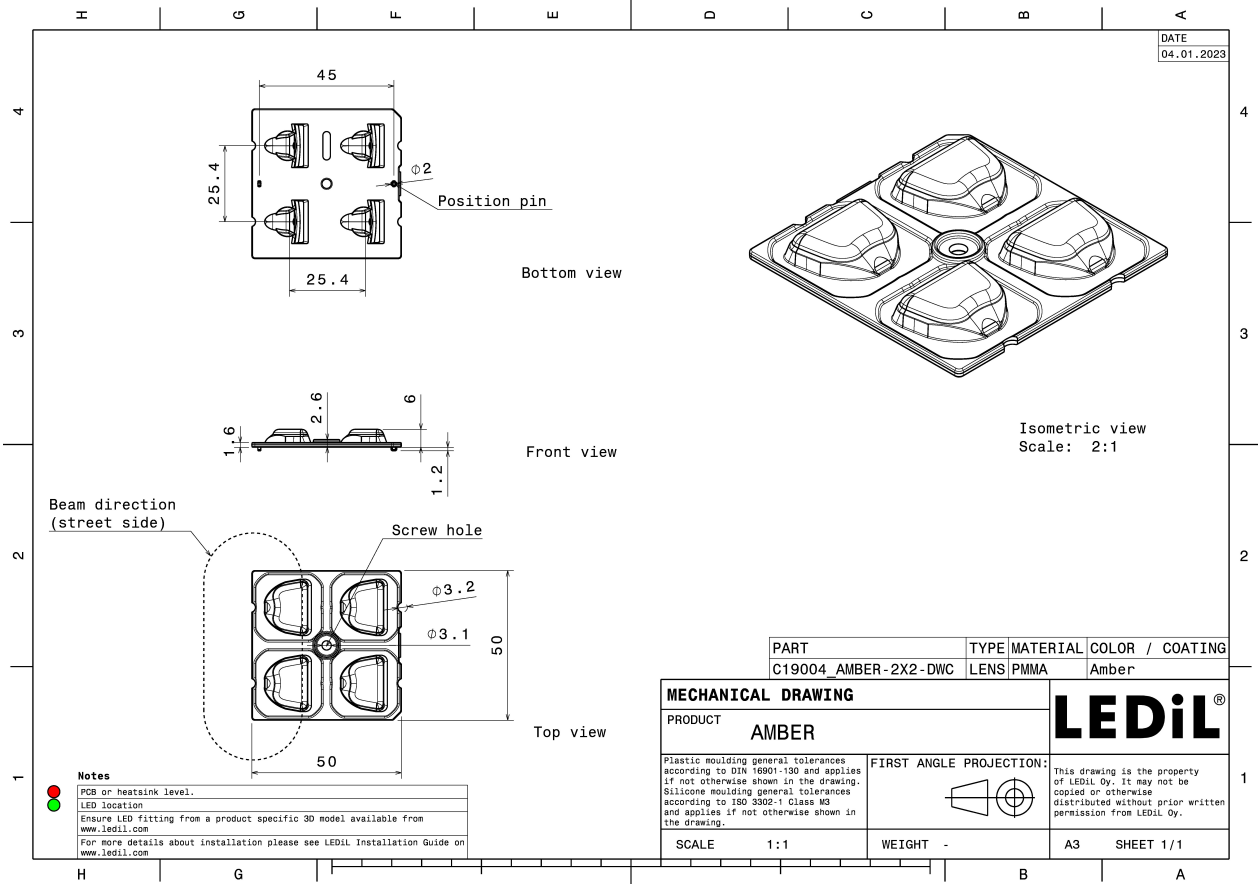


MATERIALS:

Component	Type	Material	Colour	Finish
AMBER-2X2-DWC	Multi-lens	PMMA	amber	

ORDERING INFORMATION:

Component	Qty in box	MOQ	MPQ	Box weight (kg)
C19004_AMBER-2X2-DWC » Box size: 480 x 280 x 300 mm	800	160	160	5.7



See also our general installation guide: www.ledil.com/installation_guide

OPTICAL RESULTS (MEASURED):

OSRAM

Opto Semiconductors

LED	Duris S8
FWHM / FWTM	Asymmetric
Efficiency	80 %
Peak intensity	0.4 cd/lm
LEDs/each optic	1
Light colour	White
Required components:	

