

BRIANNA-28X1-SHD-WHT-MATT

White matt shade for BRIANNA-28X1 lens

SPECIFICATION:

Dimensions	1120.0 x 40.0 mm
Height	11.2 mm
Fastening	snaps, clips
ROHS compliant	yes ⓘ

MATERIALS:

Component	Type
BRIANNA-28X1-SHD-WHT-MATT	Accessory

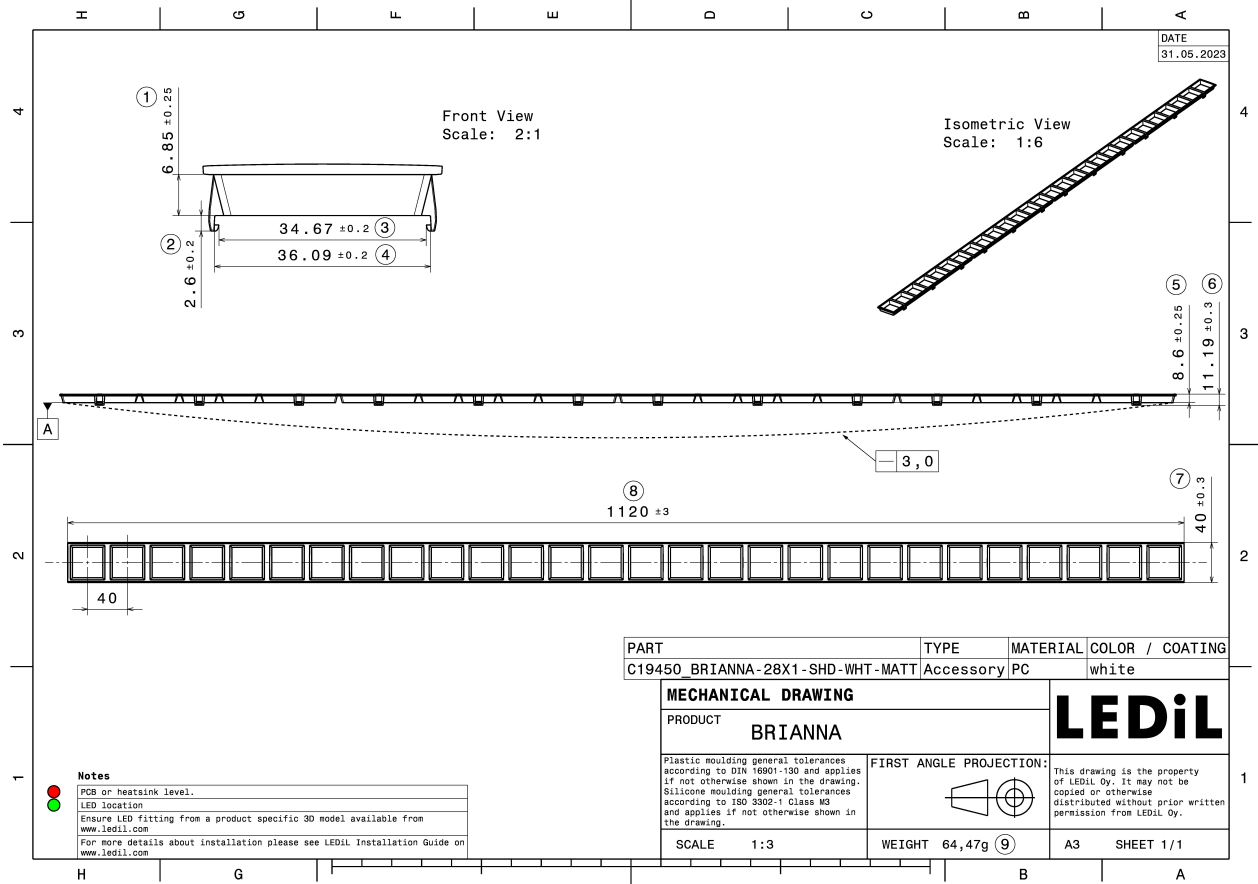
ORDERING INFORMATION:

Component
C19450_BRIANNA-28X1-SHD-WHT-MATT
» Box size: 1160 x 230 x 190 mm



Material	Colour	Finish
----------	--------	--------

Qty in box	MOQ	MPQ	Box weight (kg)
80	80	80	0.0



See also our general installation guide: www.ledil.com/installation_guide

AVAILABLE LEDiL PRODUCTS:

Product name	Description
C18343_BRIANNA-28X1-W	~60° wide beam. Variant with 28X1 lens.