

## TITANUM-O-SS

~9° smooth spot beam. Assembly with tape.

### TECHNICAL SPECIFICATIONS:

Dimensions	Ø 26.0 mm
Height	14.8 mm
Fastening	tape
ROHS compliant	yes ⓘ

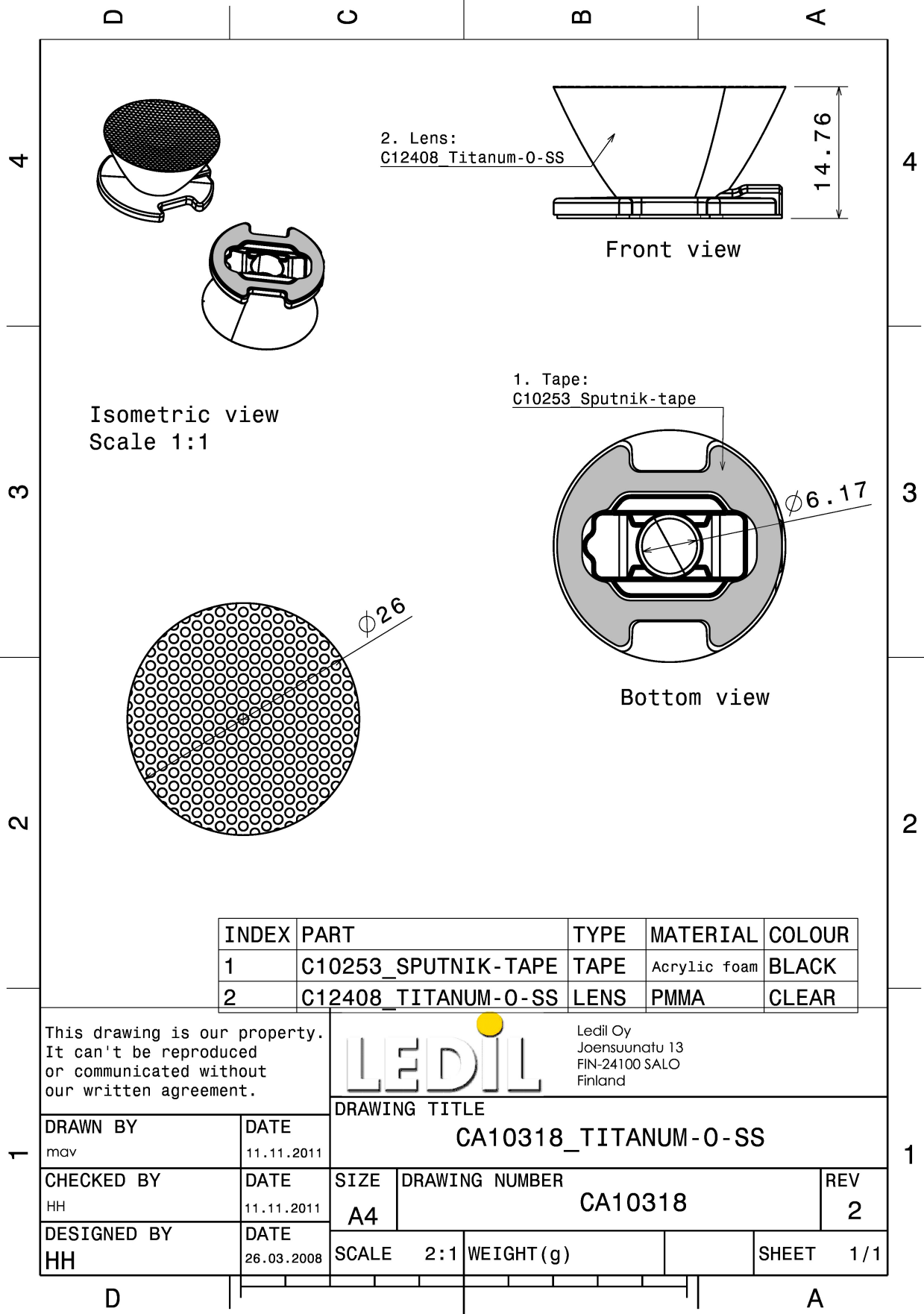
### MATERIAL SPECIFICATIONS:

Component	Type	Material	Colour	Finish
TITANUM-O-SS	Single lens	PMMA	clear	
SPUTNIK-TAPE	Tape	Acrylic foam	black	



### ORDERING INFORMATION:

Component	Type	Qty in box	MOQ	MPQ	Box weight (kg)
CA10318_TITANUM-O-SS » Box size: 480 x 280 x 300 mm	Single lens	1001	308	77	7.0



See also our general installation guide: [www.ledil.com/installation\\_guide](http://www.ledil.com/installation_guide)

## PHOTOMETRIC DATA (MEASURED):

### OSRAM

Opto Semiconductors

LED Golden Dragon+  
FWHM / FWTM 8.0° / 18.0°  
Efficiency 87 %  
Peak intensity 21.7 cd/lm  
LEDs/each optic 1  
Light colour White  
Required components:

### OSRAM

Opto Semiconductors

LED Platinum Dragon  
FWHM / FWTM 9.0° / 19.0°  
Efficiency 91 %  
Peak intensity 21.8 cd/lm  
LEDs/each optic 1  
Light colour White  
Required components:

### PHOTOMETRIC DATA (SIMULATED):



LED	NFMW48xA
FWHM / FWTM	16.0° / 34.0°
Efficiency	89 %
Peak intensity	7.4 cd/lm
LEDs/each optic	1
Light colour	White
Required components:	

