

TITANUM-O-O

~35° + 8° oval beam. Assembly with tape.

SPECIFICATION:

Dimensions	Ø 26.0 mm
Height	14.9 mm
Fastening	tape
ROHS compliant	yes ⓘ

MATERIALS:

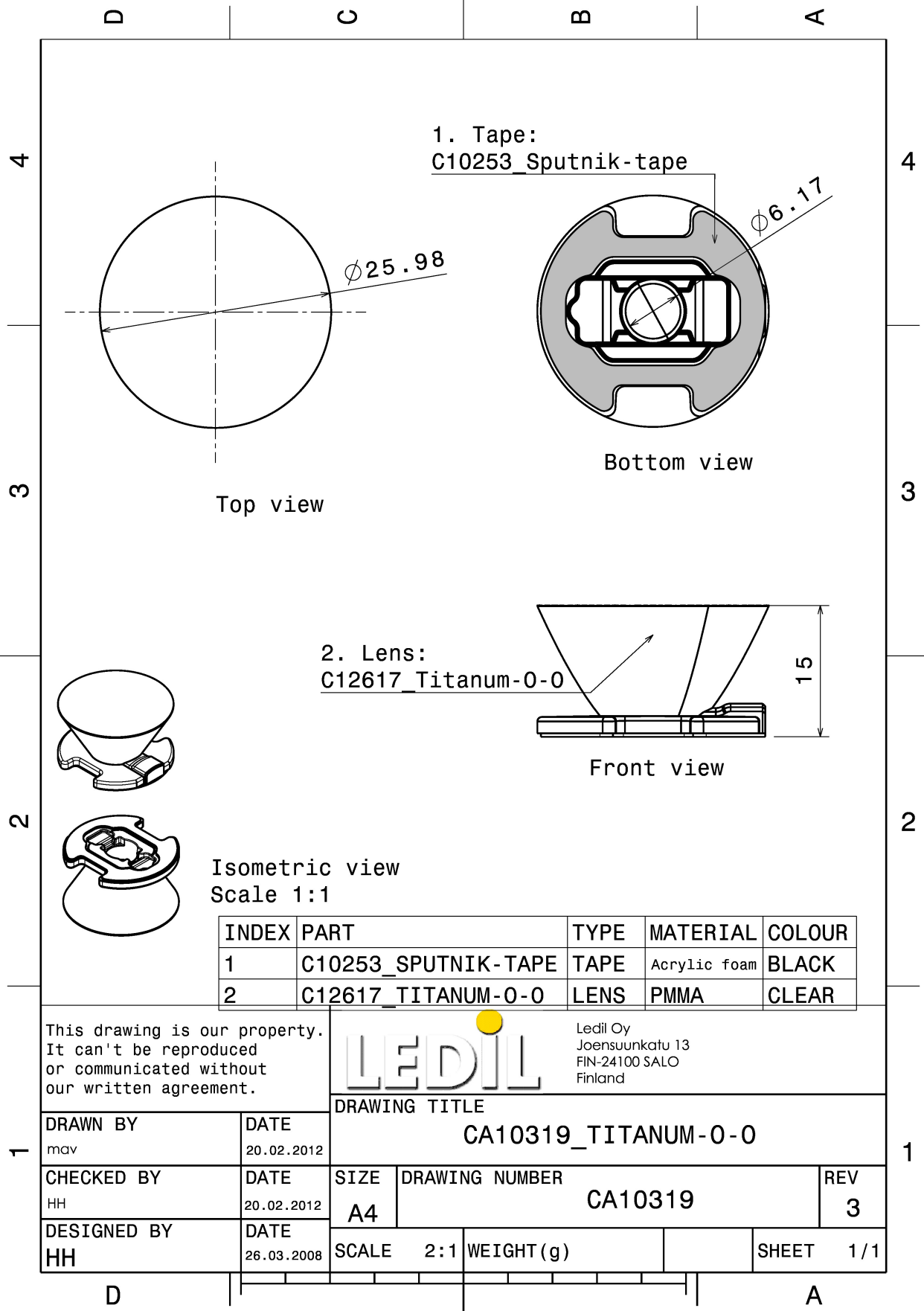
Component	Type	Material	Colour	Finish
TITANUM-O-O	Single lens	PMMA	clear	
SPUTNIK-TAPE	Tape	Acrylic foam	black	

ORDERING INFORMATION:

Component		Qty in box	MOQ	MPQ	Box weight (kg)
CA10319_TITANUM-O-O	Single lens	1001	308	77	6.9
» Box size: 480 x 280 x 300 mm					



LEDiL®



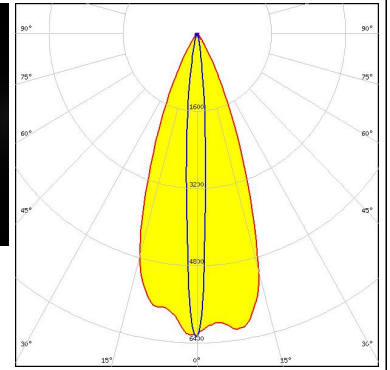
See also our general installation guide: www.ledil.com/installation_guide

OPTICAL RESULTS (MEASURED):

OSRAM

Opto Semiconductors

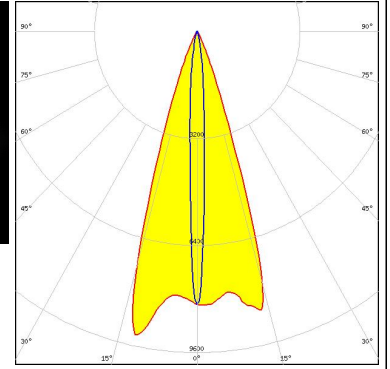
LED Golden Dragon+
 FWHM / FWTM 40.0 + 8.0° / 61.0 + 20.0°
 Efficiency 91 %
 Peak intensity 6.4 cd/lm
 LEDs/each optic 1
 Light colour White
 Required components:



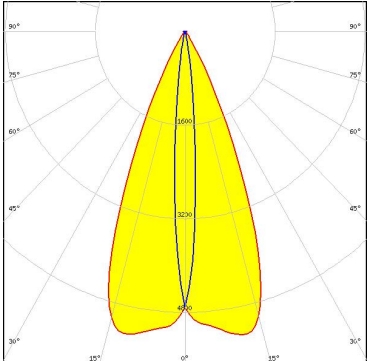
OSRAM

Opto Semiconductors

LED Platinum Dragon
 FWHM / FWTM 36.0 + 6.0° / 49.0 + 20.0°
 Efficiency 94 %
 Peak intensity 9.3 cd/lm
 LEDs/each optic 1
 Light colour White
 Required components:



OPTICAL RESULTS (SIMULATED):

<p>LUMILEDS</p> <p>LED: LUXEON TX FWHM / FWTM: 45.0 + 10.0° / 62.0 + 21.0° Efficiency: 90 % Peak intensity: 5.3 cd/lm LEDs/each optic: 1 Light colour: White Required components:</p>	
<p>SAMSUNG</p> <p>LED: LM302D FWHM / FWTM: 10.0 + 46.0° / 22.0 + 62.0° Efficiency: 89 % Peak intensity: 4.8 cd/lm LEDs/each optic: 1 Light colour: White Required components:</p>	