

TINA2-O

~35° + 15° oval beam optimized for Nichia NS6x83. Assembly with holder and installation tape.

SPECIFICATION:

Dimensions	Ø 16.1 mm
Height	11 mm
Fastening	tape
ROHS compliant	yes ⓘ

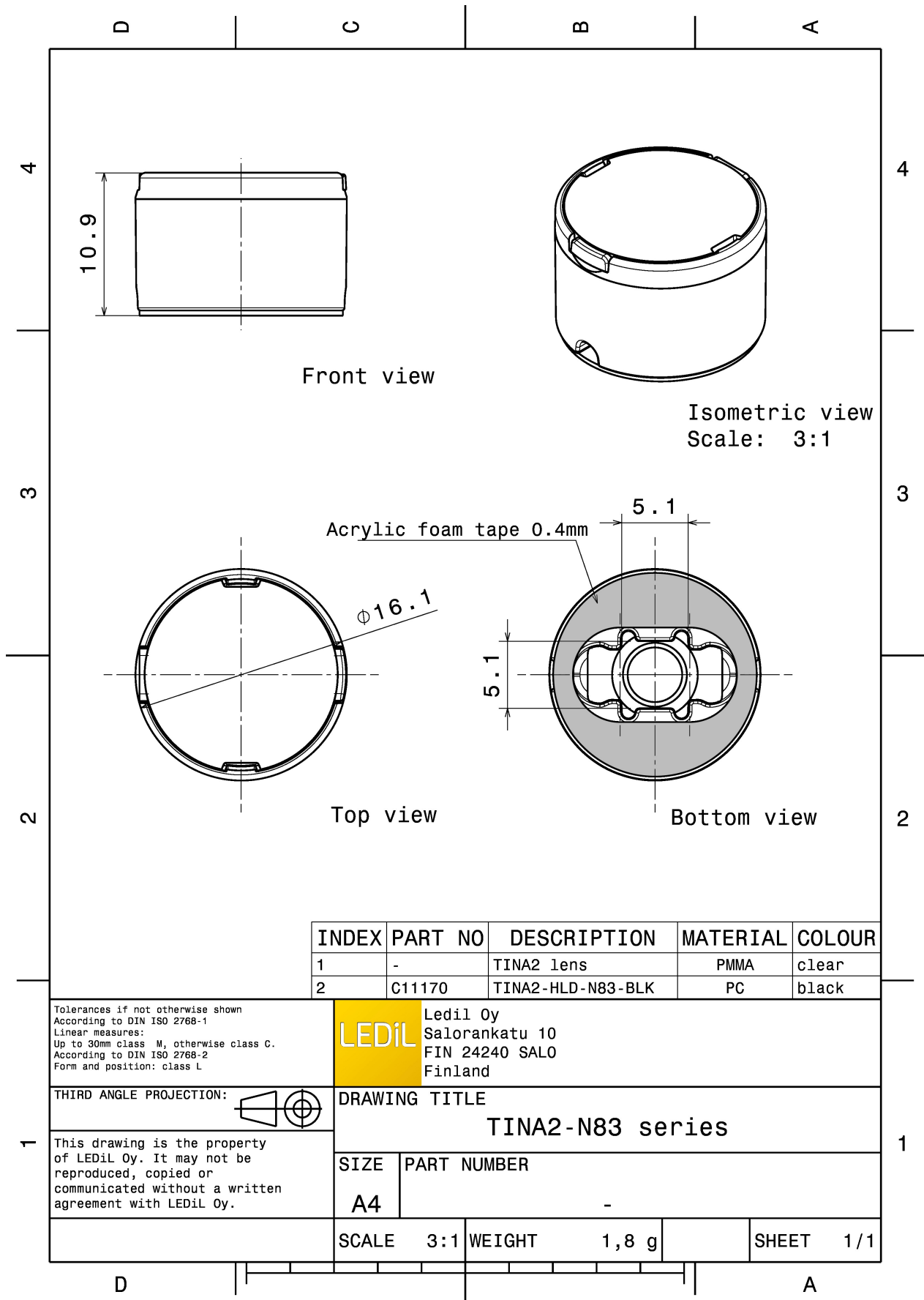


MATERIALS:

Component	Type	Material	Colour	Finish
TINA2-O	Single lens	PMMA	clear	
TINA2-HLD-N83-BLK	Holder	PC	black	
TINA-TAPE3	Tape	Acrylic foam	black	

ORDERING INFORMATION:

Component		Qty in box	MOQ	MPQ	Box weight (kg)
CA11173_TINA2-O	Single lens	4140		230	9.3
» Box size: 451 x 241 x 298 mm					



INDEX	PART NO	DESCRIPTION	MATERIAL	COLOUR
1	-	TINA2 lens	PMMA	clear
2	C11170	TINA2-HLD-N83-BLK	PC	black

Tolerances if not otherwise shown
According to DIN ISO 2768-1
Linear measures:
Up to 30mm class M, otherwise class C.
According to DIN ISO 2768-2
Form and position: class L

LEDiL Ledil Oy
Salorankatu 10
FIN 24240 SALO
Finland

THIRD ANGLE PROJECTION:

DRAWING TITLE
TINA2-N83 series



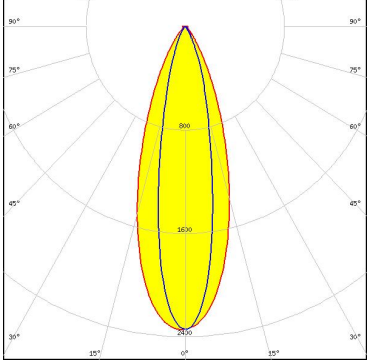

This drawing is the property of LEDiL Oy. It may not be reproduced, copied or communicated without a written agreement with LEDiL Oy.

SIZE	PART NUMBER
A4	-

SCALE	3:1	WEIGHT	1,8 g	SHEET	1/1
-------	-----	--------	-------	-------	-----

See also our general installation guide: www.ledil.com/installation_guide

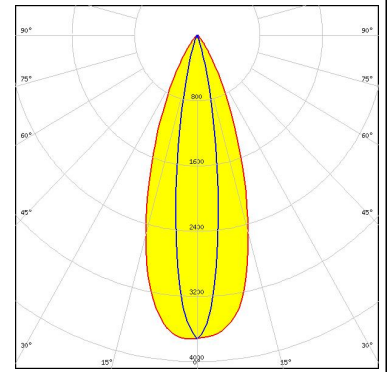
OPTICAL RESULTS (MEASURED):

 LED LUXEON V FWHM / FWTM 36.0 + 21.0° / 68.0 + 47.0° Efficiency 76 % Peak intensity 2.3 cd/lm LEDs/each optic 1 Light colour White Required components:		
 LED NS3x83 FWHM / FWTM 36.0 + 22.0° / 68.0 + 50.0° Efficiency 83 % Peak intensity 2.2 cd/lm LEDs/each optic 1 Light colour White Required components:		

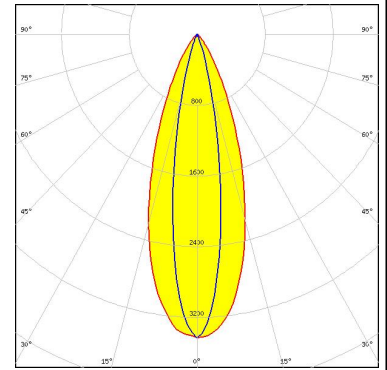
OPTICAL RESULTS (SIMULATED):



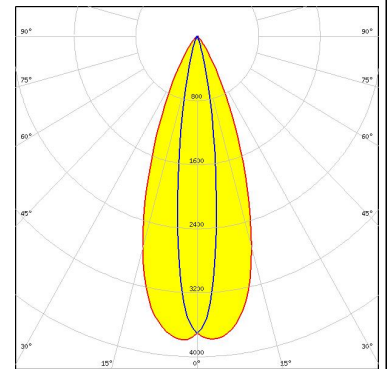
LED XP-L HI
 FWHM / FWTM 38.0 + 16.0° / 66.0 + 32.0°
 Efficiency 89 %
 Peak intensity 3.7 cd/lm
 LEDs/each optic 1
 Light colour White
 Required components:



LED NVSW219F
 FWHM / FWTM 36.0 + 18.0° / 68.0 + 36.0°
 Efficiency 88 %
 Peak intensity 3.4 cd/lm
 LEDs/each optic 1
 Light colour White
 Required components:



LED OSCONIQ P 3737 (2W version)
 FWHM / FWTM 40.0 + 16.0° / 66.0 + 31.0°
 Efficiency 87 %
 Peak intensity 3.8 cd/lm
 LEDs/each optic 1
 Light colour White
 Required components:



LED SFH 4725AS
 FWHM / FWTM 41.0 + 14.0° / 64.0 + 27.0°
 Efficiency 86 %
 LEDs/each optic 1
 Light colour IR
 Required components:

