

STRADA-S

Side emitter beam. Assembly with installation tape.

SPECIFICATION:

Dimensions	19.6 x 15.5 mm
Height	6.9 mm
Fastening	tape, pin, screw
ROHS compliant	yes ⓘ

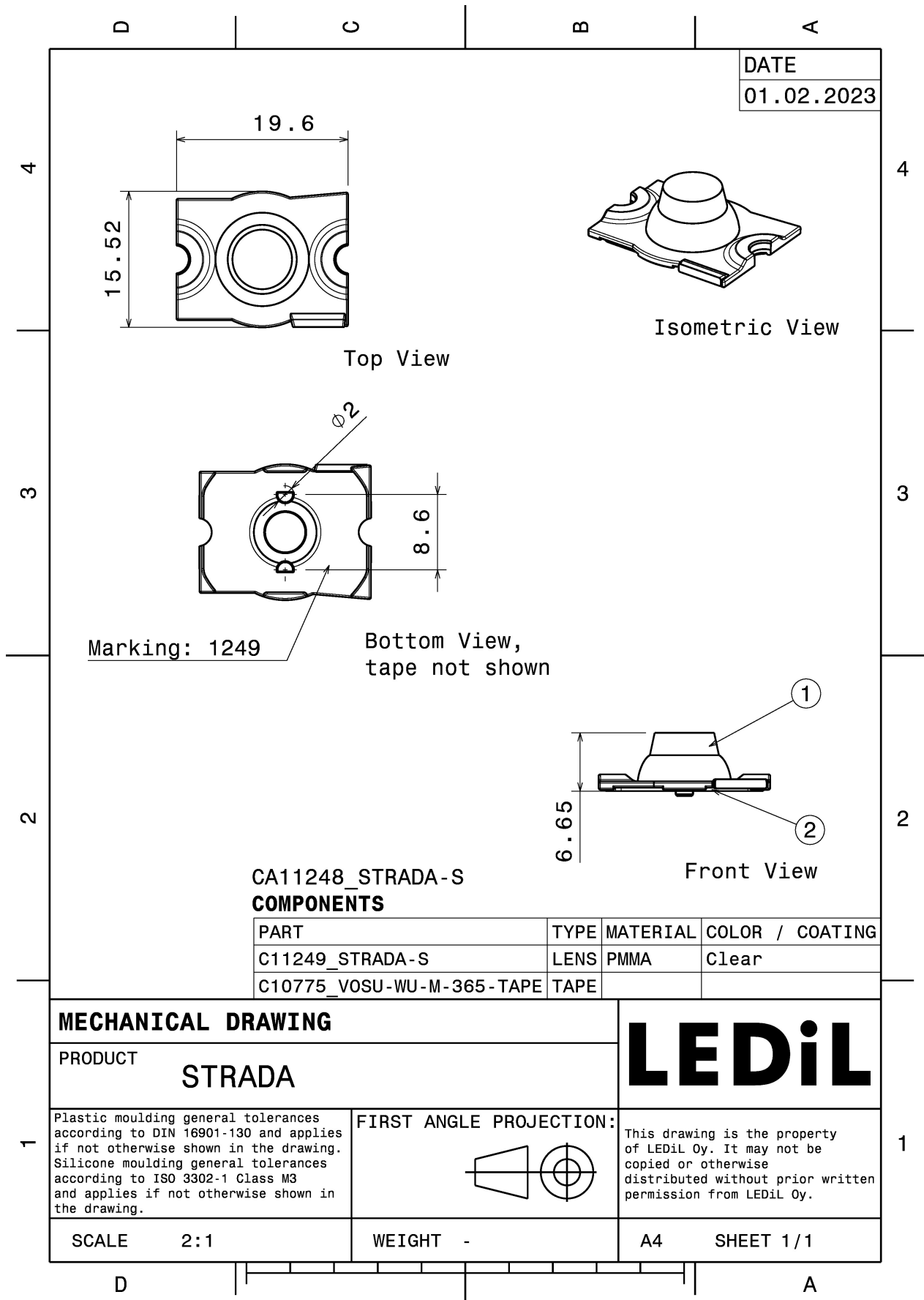


MATERIALS:

Component	Type	Material	Colour	Finish
STRADA-S	Single lens	PMMA	clear	
VOSU-WU-M-365-TAPE	Tape	Acrylic foam		

ORDERING INFORMATION:

Component		Qty in box	MOQ	MPQ	Box weight (kg)
CA11248_STRADA-S	Single lens	4080	240	240	3.7
» Box size:					



DATE
01.02.2023

**CA11248_STRADA-S
COMPONENTS**

PART	TYPE	MATERIAL	COLOR / COATING
C11249_STRADA-S	LENS	PMMA	Clear
C10775_VOSU-WU-M-365-TAPE	TAPE		

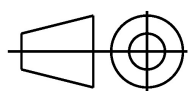
MECHANICAL DRAWING

PRODUCT
STRADA



Plastic moulding general tolerances according to DIN 16901-130 and applies if not otherwise shown in the drawing. Silicone moulding general tolerances according to ISO 3302-1 Class M3 and applies if not otherwise shown in the drawing.

FIRST ANGLE PROJECTION:



This drawing is the property of LEDiL Oy. It may not be copied or otherwise distributed without prior written permission from LEDiL Oy.

SCALE	2:1	WEIGHT	-	A4	SHEET 1/1
-------	-----	--------	---	----	-----------

See also our general installation guide: www.ledil.com/installation_guide

OPTICAL RESULTS (MEASURED):



LED XP-G
FWHM / FWTM 144.0 + 176.0°
Efficiency 93 %
Peak intensity 0.4 cd/lm
LEDs/each optic 1
Light colour White
Required components:



LED LUXEON A
FWHM / FWTM 134.0 + 170.0°
Efficiency 93 %
LEDs/each optic 1
Light colour White
Required components:

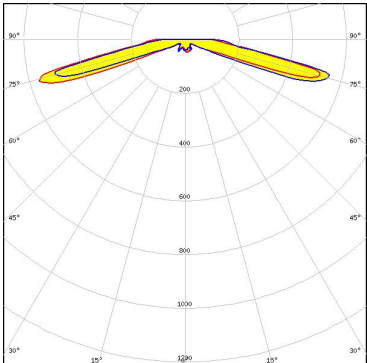
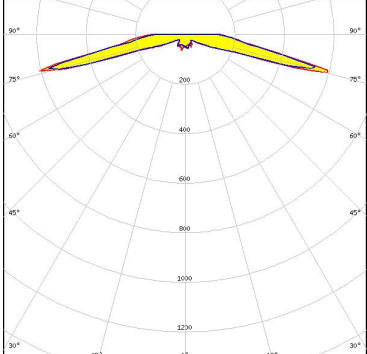


LED LUXEON Rebel
FWHM / FWTM 162.0 + 138.0°
Efficiency 93 %
Peak intensity 0.4 cd/lm
LEDs/each optic 1
Light colour White
Required components:



LED LUXEON Rebel ES
FWHM / FWTM 134.0 + 170.0° / 98.0°
Efficiency 93 %
Peak intensity 0.3 cd/lm
LEDs/each optic 1
Light colour White
Required components:

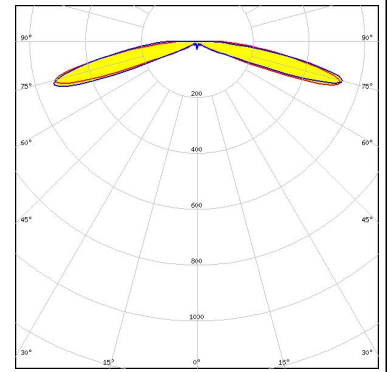
OPTICAL RESULTS (MEASURED):

<p>LUMILEDS</p> <p>LED LUXEON Z ES FWHM / FWTM 160.0° Efficiency 92 % Peak intensity 0.6 cd/lm LEDs/each optic 1 Light colour White Required components:</p>	
<p>NICHIA</p> <p>LED NCSxx19A FWHM / FWTM 162.0 + 138.0° Efficiency 93 % Peak intensity 0.4 cd/lm LEDs/each optic 1 Light colour White Required components:</p>	
<p>OSRAM <small>Opto Semiconductors</small></p> <p>LED OSOLON SSL 150 FWHM / FWTM 148.0 + 170.0° Efficiency 93 % Peak intensity 0.4 cd/lm LEDs/each optic 1 Light colour White Required components:</p>	
<p>OSRAM <small>Opto Semiconductors</small></p> <p>LED OSOLON SSL 80 FWHM / FWTM 161.0° / 180.0° Efficiency 93 % Peak intensity 0.6 cd/lm LEDs/each optic 1 Light colour White Required components:</p>	

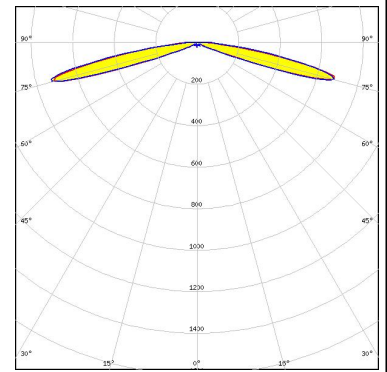
OPTICAL RESULTS (SIMULATED):



LED XQ-E HD
 FWHM / FWTM 165.0° / 180.0°
 Efficiency 94 %
 Peak intensity 0.5 cd/lm
 LEDs/each optic 1
 Light colour White
 Required components:



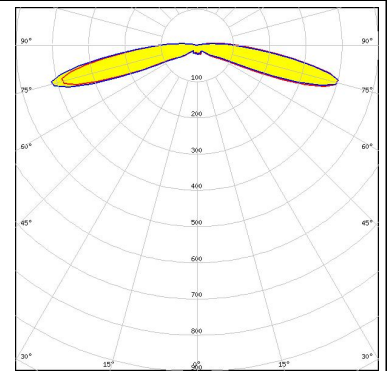
LED XQ-E HI
 FWHM / FWTM 162.0° / 175.0°
 Efficiency 95 %
 Peak intensity 0.7 cd/lm
 LEDs/each optic 1
 Light colour White
 Required components:



LED NVSxx19A
 FWHM / FWTM 144.0 + 176.0°
 Efficiency %
 LEDs/each optic 1
 Light colour White
 Required components:



LED OSOLON Square CSSRM2/CSSRM3
 FWHM / FWTM 168.0° / 192.0°
 Efficiency 94 %
 Peak intensity 0.4 cd/lm
 LEDs/each optic 1
 Light colour White
 Required components:

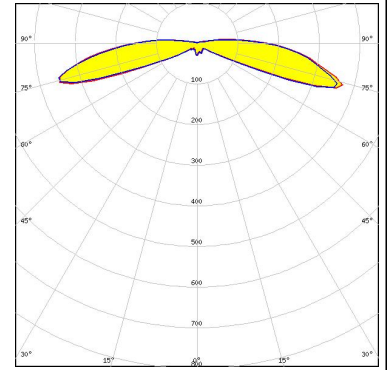


OPTICAL RESULTS (SIMULATED):

OSRAM

Opto Semiconductors

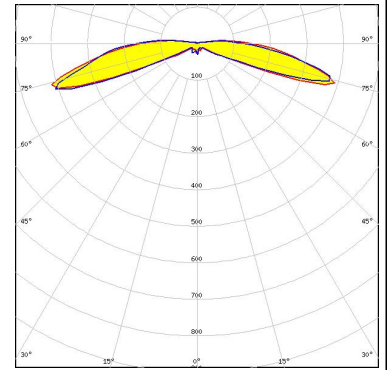
LED OSLOM SSL 80
 FWHM / FWTM 176.0° / 199.0°
 Efficiency 95 %
 Peak intensity 0.4 cd/lm
 LEDs/each optic 1
 Light colour True Green
 Required components:



OSRAM

Opto Semiconductors

LED OSLOM SSL 80
 FWHM / FWTM 173.0° / 196.0°
 Efficiency 96 %
 Peak intensity 0.4 cd/lm
 LEDs/each optic 1
 Light colour Red
 Required components:



SEOUL SEMICONDUCTOR

LED Z5
 FWHM / FWTM 144.0 + 176.0°
 Efficiency %
 LEDs/each optic 1
 Light colour White
 Required components:

SHARP

LED Double Dome (GM2BB)
 FWHM / FWTM 144.0 + 176.0°
 Efficiency %
 LEDs/each optic 1
 Light colour White
 Required components: