

EMILY-M2

~30° medium beam. 14.88 mm high lens.

TECHNICAL SPECIFICATIONS:

Dimensions	Ø 26.0 mm
Height	14.9 mm
Fastening	tape, pin
ROHS compliant	yes ⓘ

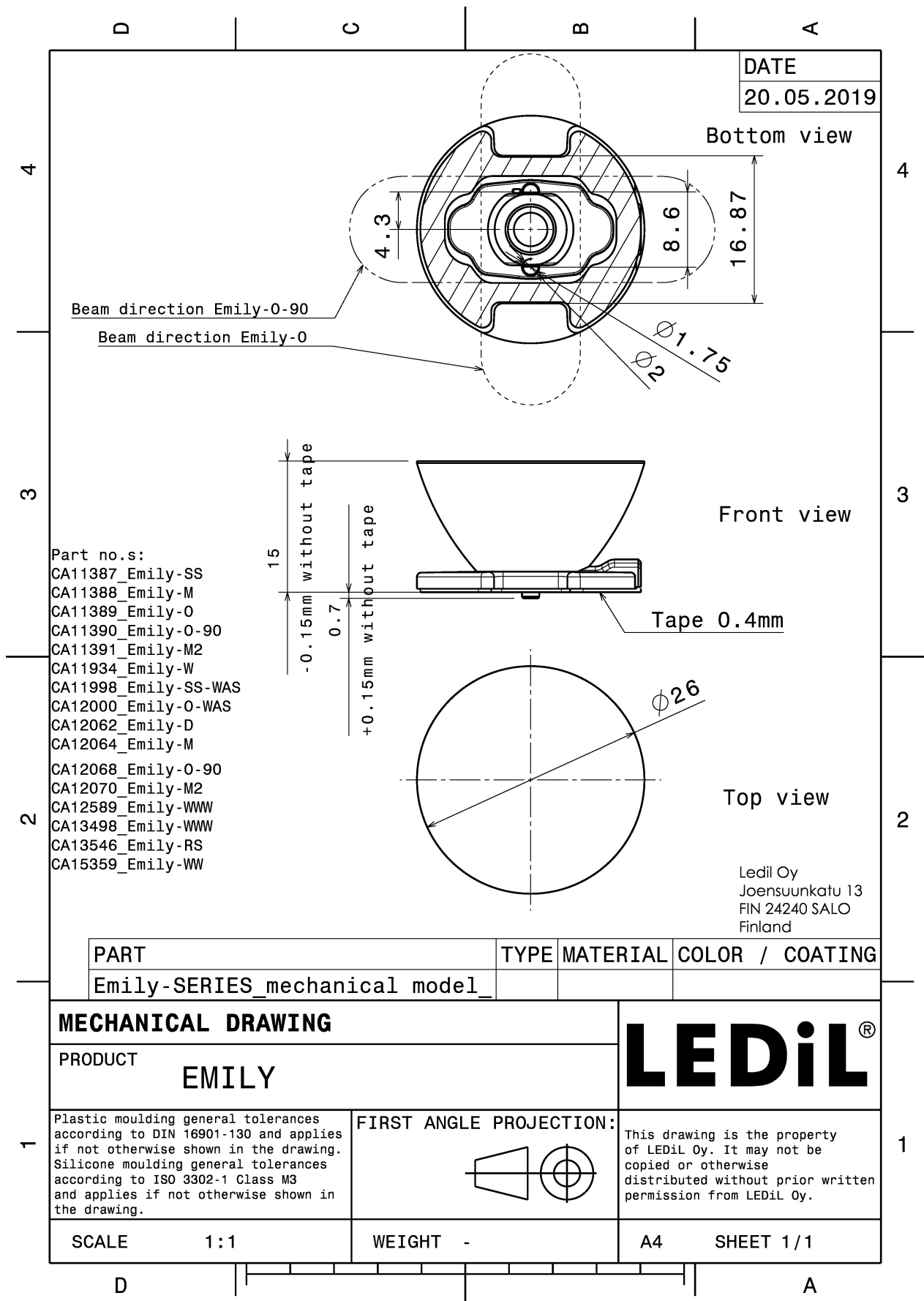
MATERIAL SPECIFICATIONS:

Component	Type	Material	Colour	Finish
EMILY-M2	Single lens	PMMA	clear	
SPUTNIK-TAPE	Tape	Acrylic foam	black	

ORDERING INFORMATION:

Component		Qty in box	MOQ	MPQ	Box weight (kg)
CA11391_EMILY-M2	Single lens	1690	260	130	10.6
» Box size: 480 x 280 x 300 mm					



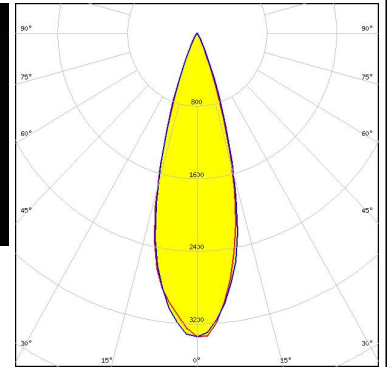
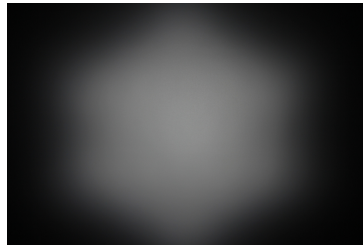


See also our general installation guide: www.ledil.com/installation_guide

PHOTOMETRIC DATA (MEASURED):

CREE LED

LED XB-H
 FWHM / FWTM 30.0° / 47.0°
 Efficiency 89 %
 Peak intensity 3.3 cd/lm
 LEDs/each optic 1
 Light colour White
 Required components:



CREE LED

LED XP-E
 FWHM / FWTM 29.0° / 47.0°
 Efficiency 92 %
 Peak intensity 3.2 cd/lm
 LEDs/each optic 1
 Light colour White
 Required components:

CREE LED

LED XP-G
 FWHM / FWTM 29.0° / 44.0°
 Efficiency 92 %
 Peak intensity 3.1 cd/lm
 LEDs/each optic 1
 Light colour White
 Required components:

LUMILEDS

LED LUXEON Rebel
 FWHM / FWTM 28.0°
 Efficiency 87 %
 LEDs/each optic 1
 Light colour White
 Required components:

PHOTOMETRIC DATA (MEASURED):



LED NCSxx19A
FWHM / FWTM 30.0°
Efficiency 88 %
LEDs/each optic 1
Light colour White
Required components:

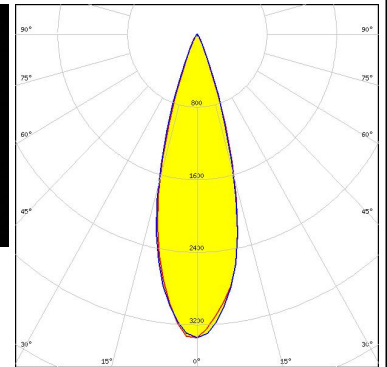
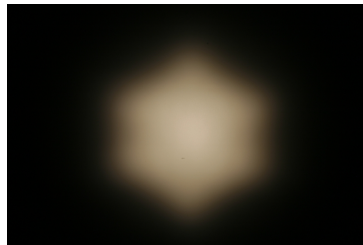


LED NVSxx19A
FWHM / FWTM 28.0° / 48.0°
Efficiency 88 %
Peak intensity 2.9 cd/m
LEDs/each optic 1
Light colour White
Required components:



Ospto Semiconductors

LED OSLOⁿ Square EC
FWHM / FWTM 30.0° / 47.0°
Efficiency 89 %
Peak intensity 3.3 cd/m
LEDs/each optic 1
Light colour White
Required components:



Ospto Semiconductors

LED OSLOⁿ SSL 150
FWHM / FWTM 30.0°
Efficiency %
LEDs/each optic 1
Light colour White
Required components:

PHOTOMETRIC DATA (MEASURED):

OSRAM Opto Semiconductors

LED OSLON SSL 80
FWHM / FWTM 28.0°
Efficiency 85 %
LEDs/each optic 1
Light colour White
Required components:



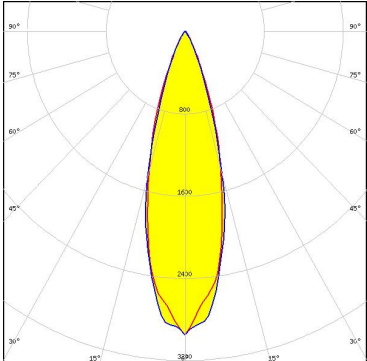
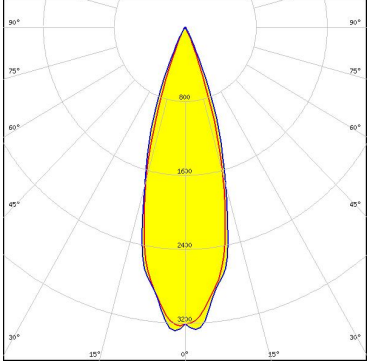
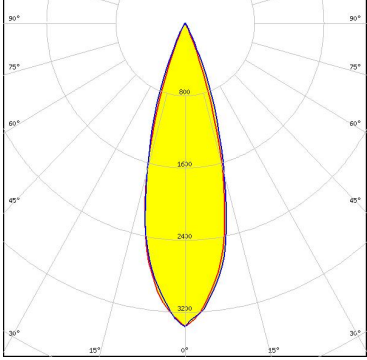
SEOUL SEMICONDUCTOR

LED Z5
FWHM / FWTM 28.0°
Efficiency %
LEDs/each optic 1
Light colour White
Required components:

SHARP

LED Double Dome (GM2BB)
FWHM / FWTM 28.0°
Efficiency %
LEDs/each optic 1
Light colour White
Required components:

PHOTOMETRIC DATA (SIMULATED):

<p>NICHIA</p> <p>LED: NCSxx19B FWHM / FWTM: 28.0° Efficiency: 89 % Peak intensity: 2.9 cd/lm LEDs/each optic: 1 Light colour: White Required components:</p>	
<p>OSRAM Opto Semiconductors</p> <p>LED: OSCONIQ P 3030 FWHM / FWTM: 31.0° / 49.0° Efficiency: 96 % Peak intensity: 3.3 cd/lm LEDs/each optic: 1 Light colour: White Required components:</p>	
<p>OSRAM Opto Semiconductors</p> <p>LED: OSOLON Square CSSRM2/CSSRM3 FWHM / FWTM: 30.0° / 49.0° Efficiency: 94 % Peak intensity: 3.4 cd/lm LEDs/each optic: 1 Light colour: White Required components:</p>	
<p>SAMSUNG</p> <p>LED: LM28xB Series FWHM / FWTM: 29.0° / 50.0° Efficiency: 94 % Peak intensity: 3.4 cd/lm LEDs/each optic: 1 Light colour: White Required components:</p>	