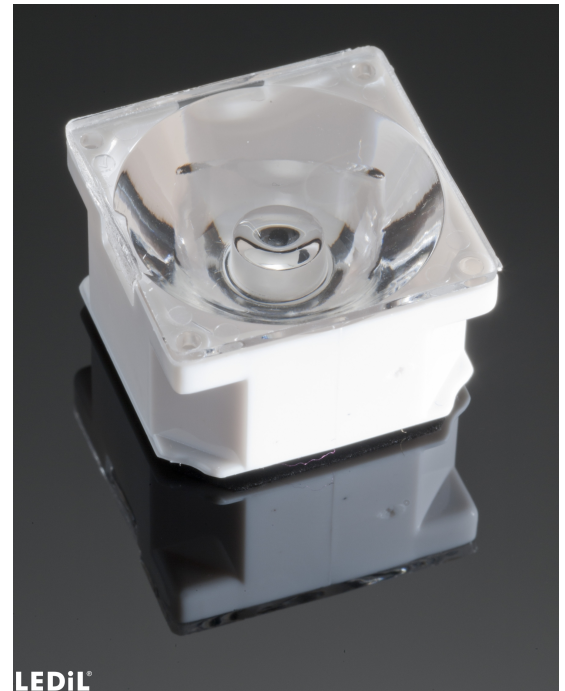


LAURA-RS-PIN

~8° spot beam optimized for CREE XP-E.
Assembly with white holder, installation tape
and location pins.

SPECIFICATION:

| | |
|----------------|----------------|
| Dimensions | 21.6 x 21.6 mm |
| Height | 13.1 mm |
| Fastening | tape, pin |
| ROHS compliant | yes ⓘ |

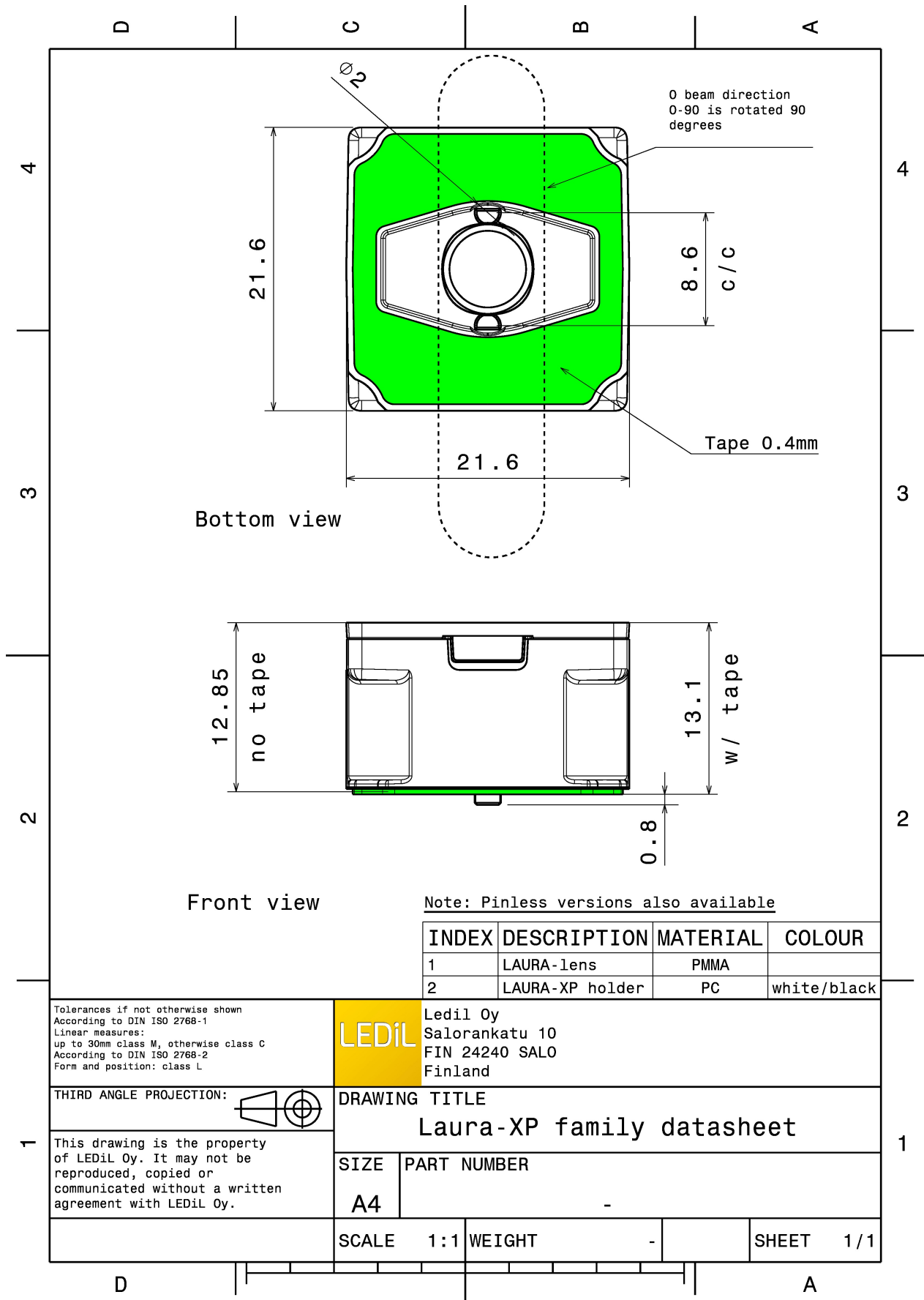


MATERIALS:

| Component | Type | Material | Colour | Finish |
|----------------------|-------------|--------------|--------|--------|
| LAURA-RS | Single lens | PMMA | clear | |
| LAURA-PIN-XP-HLD-WHT | Holder | PC | white | |
| ROSE-TAPE | Tape | Acrylic foam | black | |

ORDERING INFORMATION:

| Component | Type | Qty in box | MOQ | MPQ | Box weight (kg) |
|----------------------|-------------|------------|-----|-----|-----------------|
| CA11959_LAURA-RS-PIN | Single lens | 1440 | 360 | 180 | 7.6 |
| » Box size: | | | | | |



See also our general installation guide: www.ledil.com/installation_guide

OPTICAL RESULTS (MEASURED):



LED XP-E
 FWHM / FWTM 8.0° / 16.0°
 Efficiency 93 %
 Peak intensity 33.2 cd/lm
 LEDs/each optic 1
 Light colour White
 Required components:



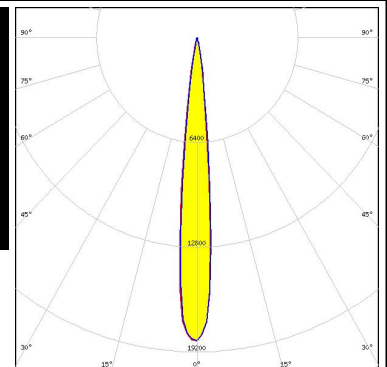
LED XP-G
 FWHM / FWTM 11.0°
 Efficiency 93 %
 LEDs/each optic 1
 Light colour White
 Required components:




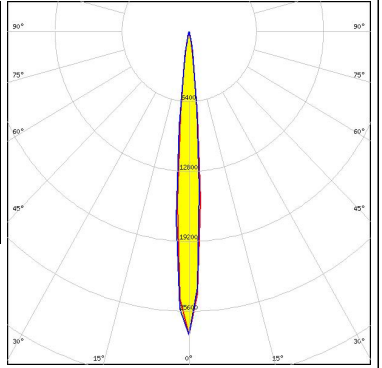

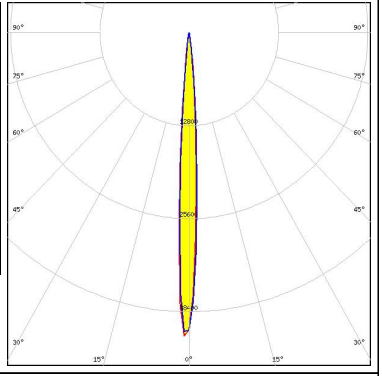
LED LUXEON Rebel
 FWHM / FWTM 7.0° / 16.0°
 Efficiency 93 %
 Peak intensity 34 cd/lm
 LEDs/each optic 1
 Light colour White
 Required components:



LED LUXEON T
 FWHM / FWTM 11.0° / 21.0°
 Efficiency 92 %
 Peak intensity 18.5 cd/lm
 LEDs/each optic 1
 Light colour White
 Required components:



OPTICAL RESULTS (MEASURED):

| | | |
|---|--|---|
| <p>NICHIA</p> <p>LED NCSxx19B FWHM / FWTM 10.0° / 19.0° Efficiency 91 % Peak intensity 27.8 cd/lm LEDs/each optic 1 Light colour White Required components:</p> |  |  |
| <p>OSRAM <small>Opto Semiconductors</small></p> <p>LED OSLON Square EC FWHM / FWTM 9.0° / 18.0° Efficiency 93 % Peak intensity 20 cd/lm LEDs/each optic 1 Light colour White Required components:</p> | | |
| <p>OSRAM <small>Opto Semiconductors</small></p> <p>LED OSLON SSL 150 FWHM / FWTM 7.0° / 14.0° Efficiency 92 % Peak intensity 42 cd/lm LEDs/each optic 1 Light colour White Required components:</p> |  |  |
| <p>OSRAM <small>Opto Semiconductors</small></p> <p>LED SFH 4725S FWHM / FWTM 10.0° / 21.0° Efficiency % LEDs/each optic 1 Light colour White Required components:</p> | | |

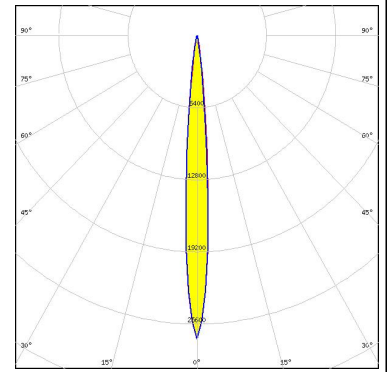
OPTICAL RESULTS (MEASURED):

| | |
|---|-------|
|  | |
| SEOUL SEMICONDUCTOR | |
| LED | Z5 |
| FWHM / FWTM | 7.0° |
| Efficiency | % |
| LEDs/each optic | 1 |
| Light colour | White |
| Required components: | |

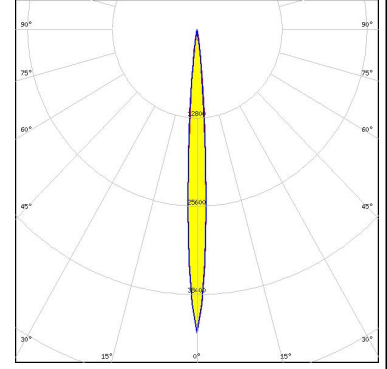
OPTICAL RESULTS (SIMULATED):



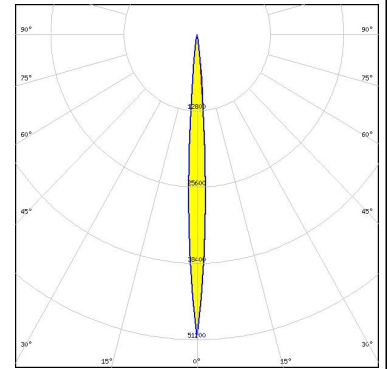
LED XD16
 FWHM / FWTM 8.6° / 18.0°
 Efficiency 94 %
 Peak intensity 26.9 cd/lm
 LEDs/each optic 1
 Light colour White
 Required components:



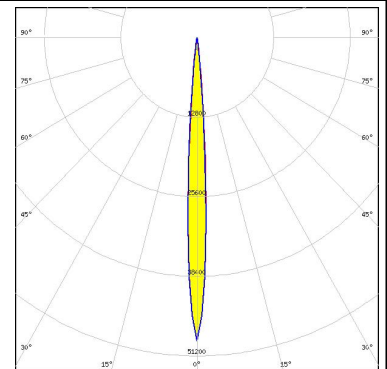
LED XP-E2
 FWHM / FWTM 8.0° / 14.0°
 Efficiency 95 %
 Peak intensity 44 cd/lm
 LEDs/each optic 1
 Light colour White
 Required components:



LED XP-P
 FWHM / FWTM 6.0° / 14.0°
 Efficiency 96 %
 Peak intensity 50.9 cd/lm
 LEDs/each optic 1
 Light colour White
 Required components:



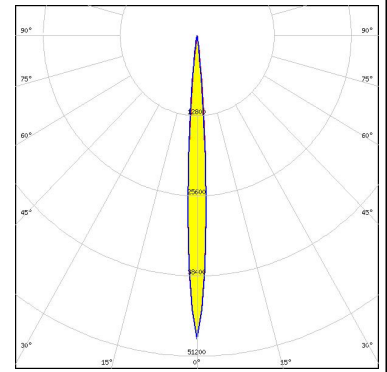
LED XQ-E HD
 FWHM / FWTM 8.0° / 14.0°
 Efficiency 93 %
 Peak intensity 48.8 cd/lm
 LEDs/each optic 1
 Light colour Green
 Required components:



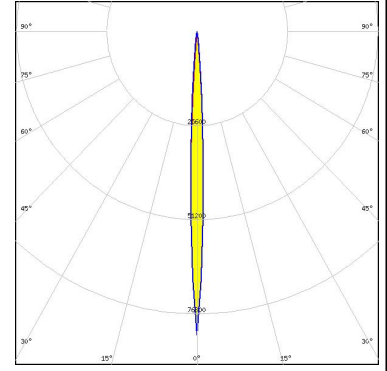
OPTICAL RESULTS (SIMULATED):



LED XQ-E HD
 FWHM / FWTM 6.0° / 14.0°
 Efficiency 94 %
 Peak intensity 48.4 cd/lm
 LEDs/each optic 1
 Light colour White
 Required components:



LED XQ-E HI
 FWHM / FWTM 6.0° / 10.0°
 Efficiency 93 %
 Peak intensity 82.6 cd/lm
 LEDs/each optic 1
 Light colour White
 Required components:



LED LUXEON H50-2
 FWHM / FWTM 12.0° / 23.0°
 Efficiency 92 %
 Peak intensity 16.3 cd/lm
 LEDs/each optic 1
 Light colour White
 Required components:



LED LUXEON IR Domed 150 (L110-0xxx150000000)
 FWHM / FWTM 9.0° / 18.0°
 Efficiency 0 %
 LEDs/each optic 1
 Light colour White
 Required components:

OPTICAL RESULTS (SIMULATED):

LUMILEDS

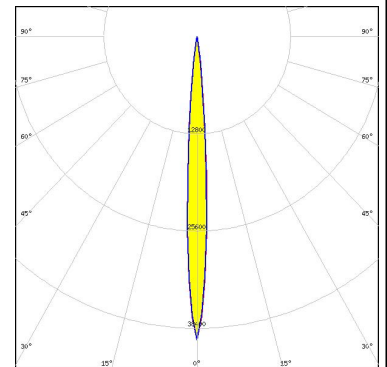
LED LUXEON IR Domed 60 (L110-0xxx060000000)
 FWHM / FWTM 9.2° / 20.0°
 Efficiency 94 %
 LEDs/each optic 1
 Light colour White
 Required components:

LUMILEDS

LED LUXEON IR Domed 90 (L110-0xxx090000000)
 FWHM / FWTM 9.0° / 18.0°
 Efficiency 94 %
 LEDs/each optic 1
 Light colour White
 Required components:

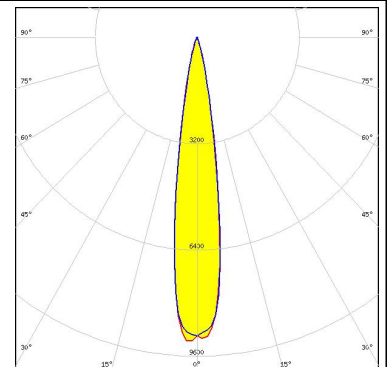
LUMILEDS

LED LUXEON Z ES
 FWHM / FWTM 8.0° / 15.0°
 Efficiency 95 %
 Peak intensity 39.9 cd/lm
 LEDs/each optic 1
 Light colour White
 Required components:



NICHIA

LED NV4WB35AM
 FWHM / FWTM 16.0° / 30.0°
 Efficiency 96 %
 Peak intensity 9.1 cd/lm
 LEDs/each optic 1
 Light colour White
 Required components:



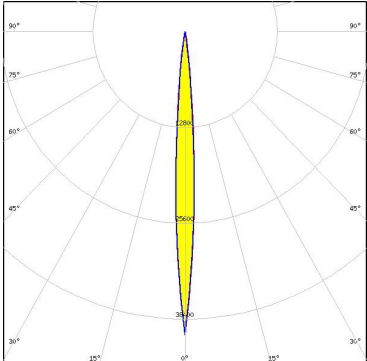
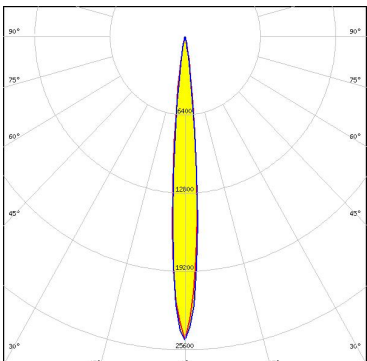
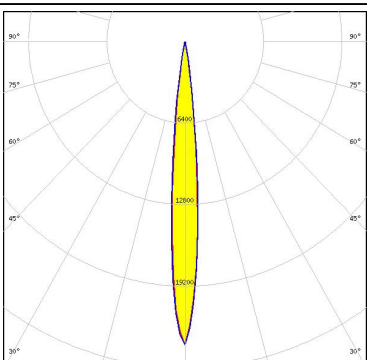
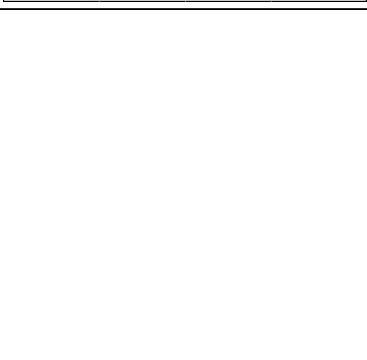
OPTICAL RESULTS (SIMULATED):

| | |
|--|--|
| <p>NICHIA</p> <p>LED: NVSW719AC FWHM / FWTM: 10.0° / 20.0° Efficiency: 96 % Peak intensity: 21.4 cd/lm LEDs/each optic: 1 Light colour: White Required components:</p> | |
| <p>NICHIA</p> <p>LED: NVSxE21A FWHM / FWTM: 10.0° / 21.0° Efficiency: 94 % Peak intensity: 21.4 cd/lm LEDs/each optic: 1 Light colour: White Required components:</p> | |
| <p>NICHIA</p> <p>LED: NVSxx19B/NVSxx19C FWHM / FWTM: 12.0° / 22.0° Efficiency: 94 % Peak intensity: 16.7 cd/lm LEDs/each optic: 1 Light colour: White Required components:</p> | |
| <p>OSRAM <small>Opto Semiconductors</small></p> <p>LED: OSCONIQ C 2424 FWHM / FWTM: 8.0° / 18.0° Efficiency: 96 % Peak intensity: 29.6 cd/lm LEDs/each optic: 1 Light colour: White Required components:</p> | |

OPTICAL RESULTS (SIMULATED):

| | | |
|--|---|--|
| OSRAM <small>Opto Semiconductors</small> | <p>LED OSCONIQ P 3737 (3W version)</p> <p>FWHM / FWTM 14.0° / 27.0°</p> <p>Efficiency 94 %</p> <p>Peak intensity 11.6 cd/lm</p> <p>LEDs/each optic 1</p> <p>Light colour White</p> <p>Required components:</p> | |
| OSRAM <small>Opto Semiconductors</small> | <p>LED OSCONIQ P 3737 Flat</p> <p>FWHM / FWTM 10.0° / 22.0°</p> <p>Efficiency 96 %</p> <p>Peak intensity 18.6 cd/lm</p> <p>LEDs/each optic 1</p> <p>Light colour White</p> <p>Required components:</p> | |
| OSRAM <small>Opto Semiconductors</small> | <p>LED OSLOM Black Flat (LUW HWQP)</p> <p>FWHM / FWTM 6.0° / 12.0°</p> <p>Efficiency 95 %</p> <p>Peak intensity 68.8 cd/lm</p> <p>LEDs/each optic 1</p> <p>Light colour White</p> <p>Required components:</p> | |
| OSRAM <small>Opto Semiconductors</small> | <p>LED OSLOM Boost HX (KW CULPM1.TG)</p> <p>FWHM / FWTM 8.0° / 16.0°</p> <p>Efficiency 96 %</p> <p>Peak intensity 37.6 cd/lm</p> <p>LEDs/each optic 1</p> <p>Light colour White</p> <p>Required components:</p> | |

OPTICAL RESULTS (SIMULATED):

| | |
|--|---|
| <p>OSRAM Opto Semiconductors</p> <p>LED OSLON Signal</p> <p>FWHM / FWTM 8.0° / 16.0°</p> <p>Efficiency 95 %</p> <p>Peak intensity 40.5 cd/lm</p> <p>LEDs/each optic 1</p> <p>Light colour Red</p> <p>Required components:</p> |  |
| <p>OSRAM Opto Semiconductors</p> <p>LED OSLON Square CSSRM2/CSSRM3</p> <p>FWHM / FWTM 9.5° / 19.0°</p> <p>Efficiency 94 %</p> <p>Peak intensity 24.8 cd/lm</p> <p>LEDs/each optic 1</p> <p>Light colour White</p> <p>Required components:</p> |  |
| <p>OSRAM Opto Semiconductors</p> <p>LED SFH 4715AS</p> <p>FWHM / FWTM 10.0° / 19.0°</p> <p>Efficiency 94 %</p> <p>Peak intensity 23.8 cd/lm</p> <p>LEDs/each optic 1</p> <p>Light colour White</p> <p>Required components:</p> |  |
| <p>OSRAM Opto Semiconductors</p> <p>LED SFH 4715S</p> <p>FWHM / FWTM 9.5°</p> <p>Efficiency %</p> <p>LEDs/each optic 1</p> <p>Light colour White</p> <p>Required components:</p> |  |

OPTICAL RESULTS (SIMULATED):

OSRAM Opto Semiconductors

| | |
|----------------------|---------------|
| LED | SFH 4770S |
| FWHM / FWTM | 10.0° / 23.0° |
| Efficiency | 94 % |
| LEDs/each optic | 1 |
| Light colour | White |
| Required components: | |

SAMSUNG

| | |
|----------------------|--------------|
| LED | LM301B |
| FWHM / FWTM | 9.0° / 19.0° |
| Efficiency | 94 % |
| Peak intensity | 24.5 cd/lm |
| LEDs/each optic | 1 |
| Light colour | White |
| Required components: | |