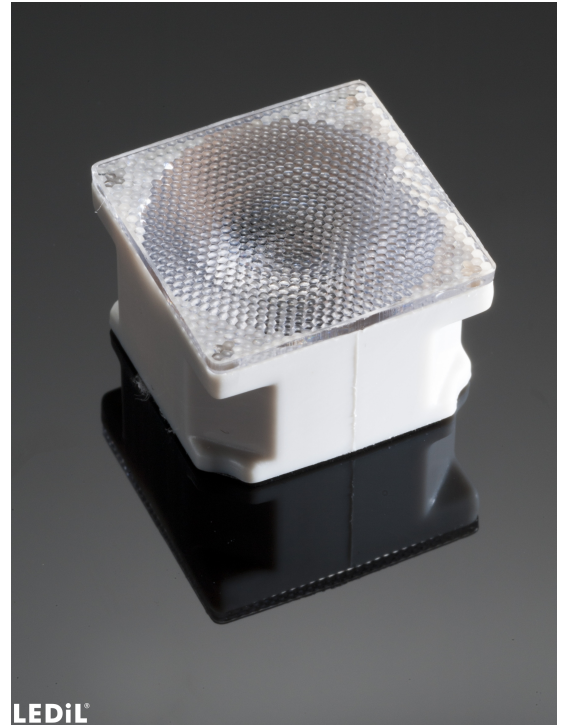


LAURA-SS-PIN

~11° smooth spot beam optimized for CREE XP-E. Assembly with white holder, installation tape and location pins.

SPECIFICATION:

Dimensions	21.6 x 21.6 mm
Height	13.1 mm
Fastening	tape, pin
ROHS compliant	yes ⓘ

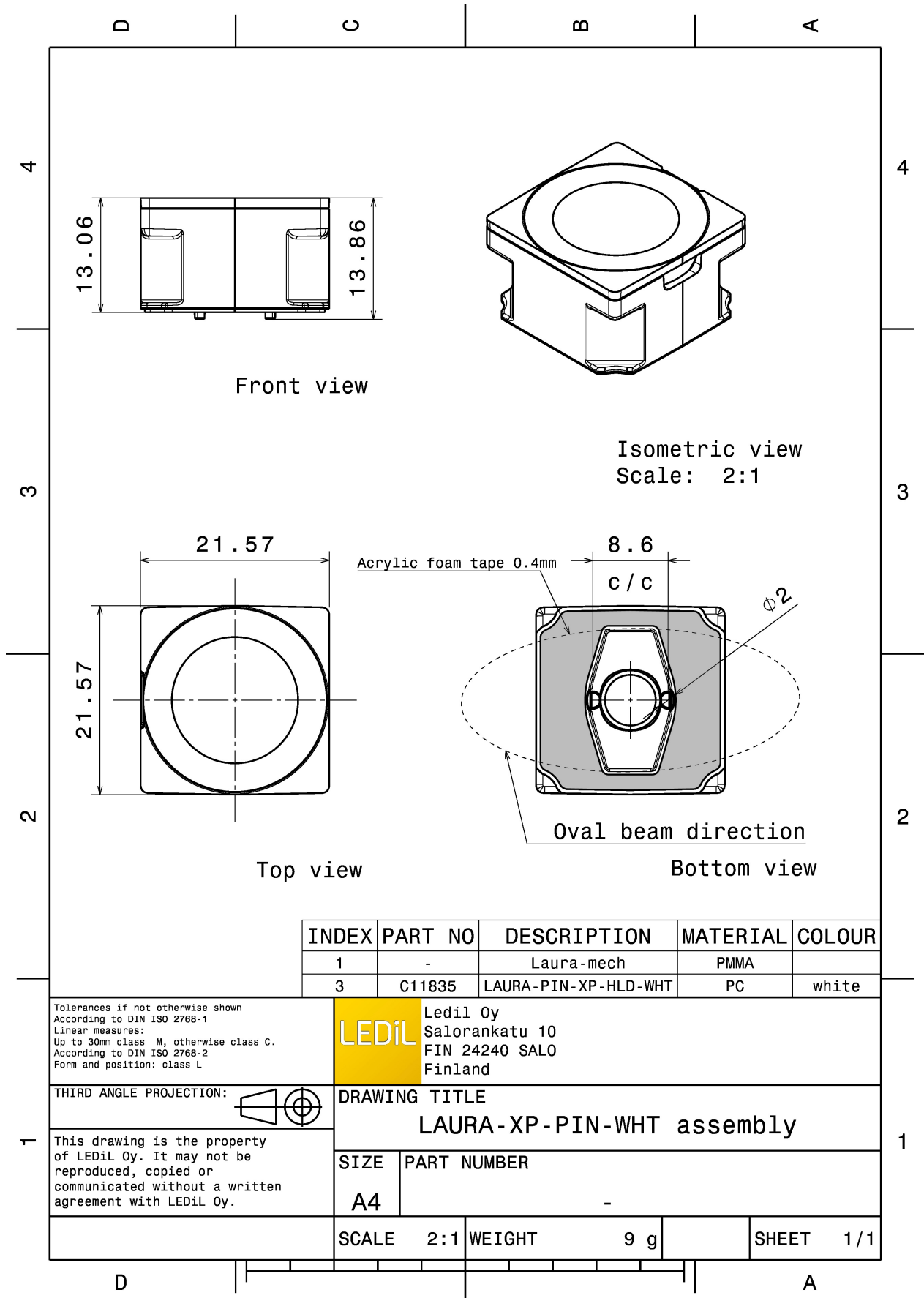


MATERIALS:

Component	Type	Material	Colour	Finish
LAURA-SS	Single lens	PMMA		
LAURA-PIN-XP-HLD-WHT	Holder	PC	white	
ROSE-TAPE	Tape	Acrylic foam	black	

ORDERING INFORMATION:

Component	Type	Qty in box	MOQ	MPQ	Box weight (kg)
CA12011_LAURA-SS-PIN	Single lens	1440		180	7.5
» Box size:					



See also our general installation guide: www.ledil.com/installation_guide

OPTICAL RESULTS (MEASURED):



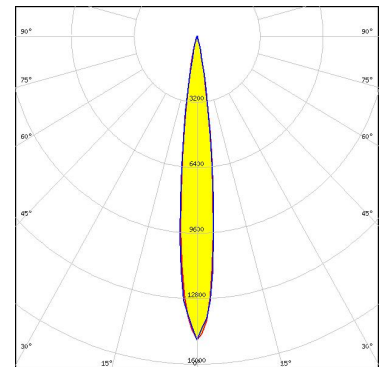
LED XB-D
FWHM / FWTM 11.0°
Efficiency 93 %
Peak intensity 14.4 cd/lm
LEDs/each optic 1
Light colour White
Required components:



LED XP-E
FWHM / FWTM 11.0° / 19.0°
Efficiency 93 %
Peak intensity 16.5 cd/lm
LEDs/each optic 1
Light colour White
Required components:



LED XP-E-HEW
FWHM / FWTM 12.0° / 24.0°
Efficiency 92 %
Peak intensity 11.7 cd/lm
LEDs/each optic 1
Light colour White
Required components:

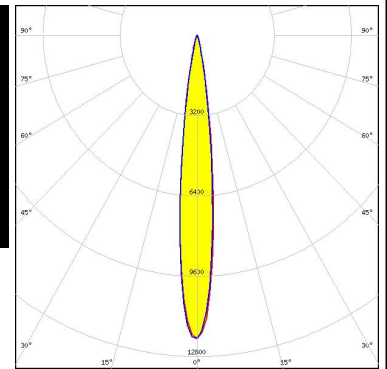


LED XP-G
FWHM / FWTM 12.0°
Efficiency 94 %
LEDs/each optic 1
Light colour White
Required components:

OPTICAL RESULTS (MEASURED):

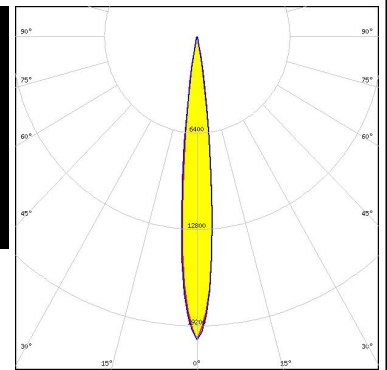
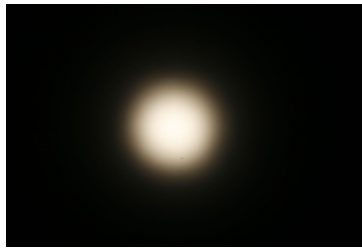
LUMILEDS

LED LUXEON T
 FWHM / FWTM 13.0° / 24.0°
 Efficiency 92 %
 Peak intensity 12.2 cd/lm
 LEDs/each optic 1
 Light colour White
 Required components:



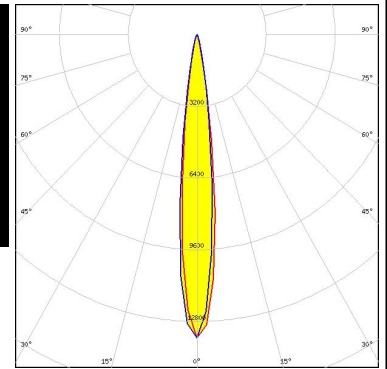
LUMILEDS

LED LUXEON Z ES
 FWHM / FWTM 12.0° / 21.0°
 Efficiency 92 %
 Peak intensity 17.6 cd/lm
 LEDs/each optic 1
 Light colour White
 Required components:



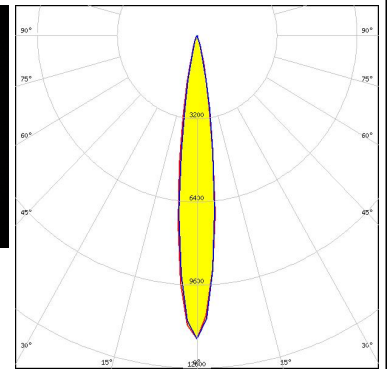
NICHIA

LED NCSxx19B
 FWHM / FWTM 13.0° / 25.0°
 Efficiency 91 %
 Peak intensity 13.5 cd/lm
 LEDs/each optic 1
 Light colour White
 Required components:



NICHIA

LED NF2x757D
 FWHM / FWTM 14.0° / 28.0°
 Efficiency 91 %
 Peak intensity 11.7 cd/lm
 LEDs/each optic 1
 Light colour White
 Required components:



OPTICAL RESULTS (MEASURED):

OSRAM

Opto Semiconductors

LED OSLON Square EC
FWHM / FWTM 13.0° / 26.0°
Efficiency 88 %
Peak intensity 9.1 cd/lm
LEDs/each optic 1
Light colour White
Required components:

OSRAM

Opto Semiconductors

LED OSLON SSL 150
FWHM / FWTM 11.0° / 22.0°
Efficiency 91 %
Peak intensity 12.5 cd/lm
LEDs/each optic 1
Light colour White
Required components:

OSRAM

Opto Semiconductors

LED OSLON SSL 80
FWHM / FWTM 11.0° / 21.0°
Efficiency 91 %
Peak intensity 13.5 cd/lm
LEDs/each optic 1
Light colour White
Required components:

OSRAM

Opto Semiconductors

LED SFH 4725S
FWHM / FWTM 14.0° / 28.0°
Efficiency %
LEDs/each optic 1
Light colour White
Required components:

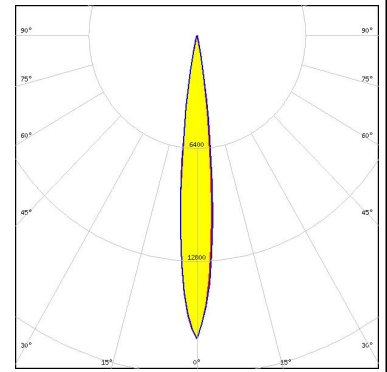
OPTICAL RESULTS (MEASURED):

	
SEOUL SEMICONDUCTOR	
LED	Z5
FWHM / FWTM	10.0°
Efficiency	%
LEDs/each optic	1
Light colour	White
Required components:	

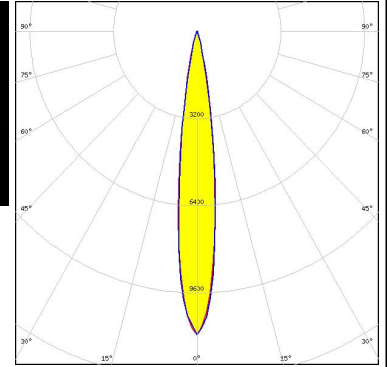
OPTICAL RESULTS (SIMULATED):



LED XP-E2
 FWHM / FWTM 12.0° / 23.0°
 Efficiency 94 %
 Peak intensity 17.2 cd/lm
 LEDs/each optic 1
 Light colour Amber
 Required components:



LED XP-G3
 FWHM / FWTM Asymmetric
 Efficiency 93 %
 Peak intensity 11.1 cd/lm
 LEDs/each optic 1
 Light colour White
 Required components:



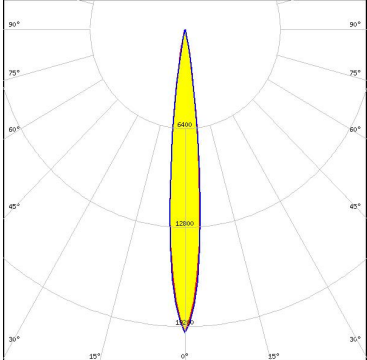

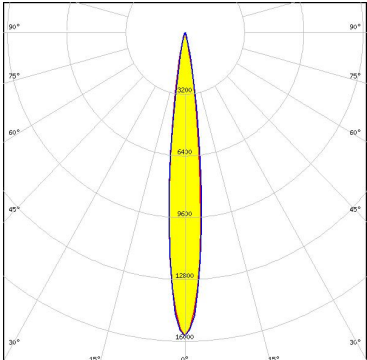



LED LUXEON IR Domed 150 (L110-0xxx150000000)
 FWHM / FWTM 14.0° / 24.0°
 Efficiency 0 %
 LEDs/each optic 1
 Light colour White
 Required components:



LED LUXEON IR Domed 60 (L110-0xxx060000000)
 FWHM / FWTM 12.0° / 25.0°
 Efficiency 94 %
 LEDs/each optic 1
 Light colour White
 Required components:

OPTICAL RESULTS (SIMULATED):

		
LED	LUXEON IR Domed 90 (L110-0xxx090000000)	
FWHM / FWTM	12.0° / 24.0°	
Efficiency	94 %	
LEDs/each optic	1	
Light colour	White	
Required components:		
		
LED	OSLON Boost HX (KW CULPM1.TG)	
FWHM / FWTM	12.0° / 21.0°	
Efficiency	96 %	
Peak intensity	19.6 cd/lm	
LEDs/each optic	1	
Light colour	White	
Required components:		
		
		
LED	OSLON Square CSSRM2/CSSRM3	
FWHM / FWTM	12.0° / 23.0°	
Efficiency	96 %	
Peak intensity	15.7 cd/lm	
LEDs/each optic	1	
Light colour	White	
Required components:		
		
		
LED	OSLON Square PC	
FWHM / FWTM	12.0°	
Efficiency	%	
LEDs/each optic	1	
Light colour	White	
Required components:		

OPTICAL RESULTS (SIMULATED):

OSRAM Opto Semiconductors		
LED	SFH 4170S	
FWHM / FWTM	12.0° / 19.0°	
Efficiency	88 %	
LEDs/each optic	1	
Light colour	IR	
Required components:		
OSRAM Opto Semiconductors		
LED	SFH 4715S	
FWHM / FWTM	12.0°	
Efficiency	%	
LEDs/each optic	1	
Light colour	White	
Required components:		