

LR2-D

~14° diffused spot beam optimized for LUXEON Rebel. 14.4 mm high assembly with installation tape.

SPECIFICATION:

Dimensions	Ø 21.6 mm
Height	14.4 mm
Fastening	tape, pin
ROHS compliant	yes ⓘ

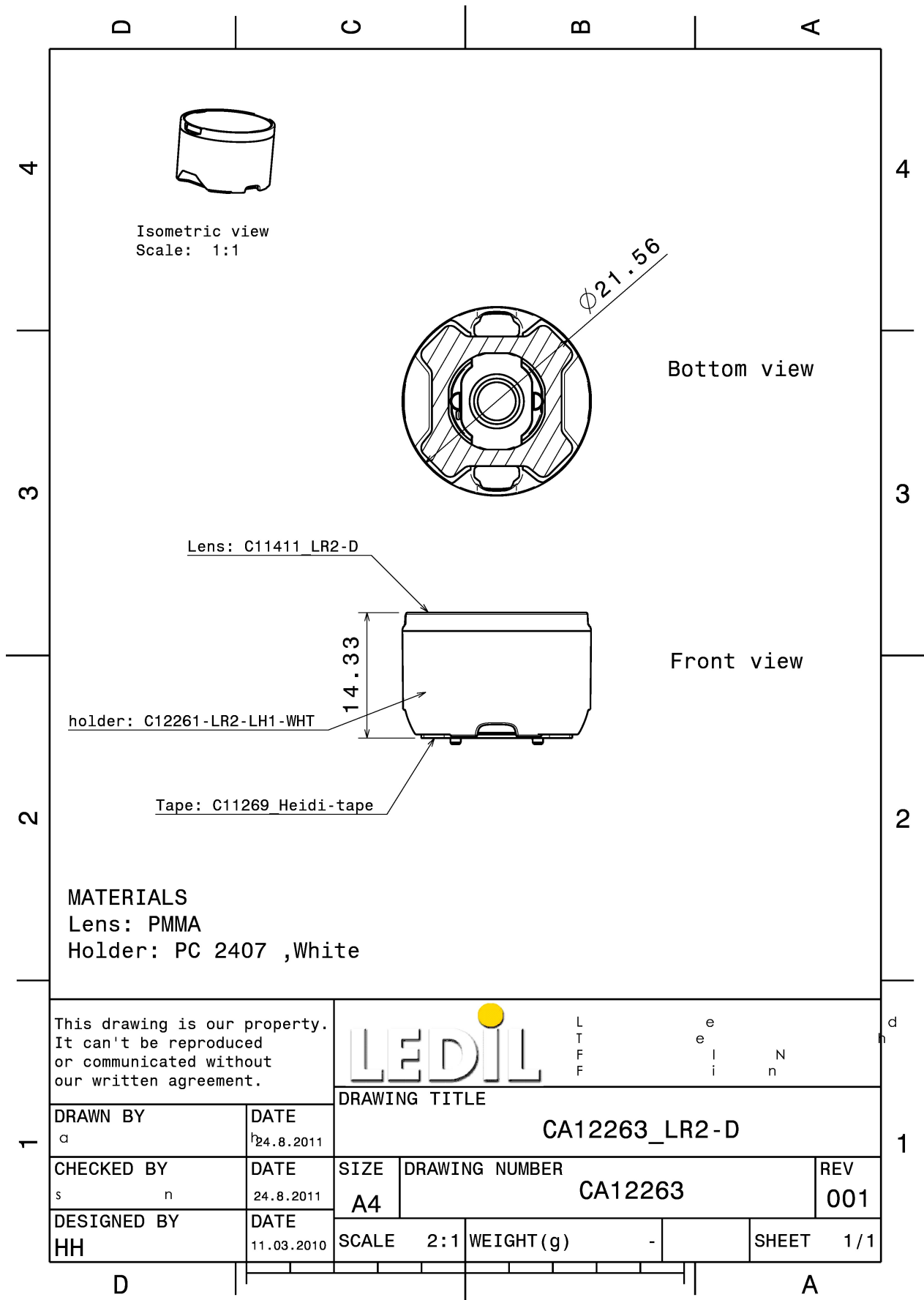
MATERIALS:

Component	Type	Material	Colour	Finish
LXP2-D	Single lens	PMMA	clear	
LR2-LH1-WHT	Holder	PC	white	
HEIDI-TAPE	Tape	Acrylic foam	black	

ORDERING INFORMATION:

Component	Type	Qty in box	MOQ	MPQ	Box weight (kg)
CA12263_LR2-D	Single lens	1680	336	112	9.0
» Box size: 480 x 280 x 300 mm					





See also our general installation guide: www.ledil.com/installation_guide

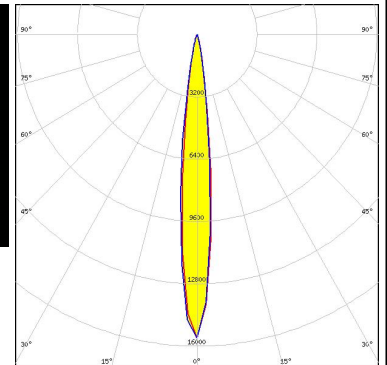
OPTICAL RESULTS (MEASURED):



LED LUXEON Rebel
FWHM / FWTM 11.0°
Efficiency 94 %
LEDs/each optic 1
Light colour White
Required components:



LED NCSxx19B
FWHM / FWTM 12.0° / 24.0°
Efficiency 90 %
Peak intensity 15.6 cd/lm
LEDs/each optic 1
Light colour White
Required components:



LED OSLON SSL 150
FWHM / FWTM 11.0° / 24.0°
Efficiency 94 %
Peak intensity 13.5 cd/lm
LEDs/each optic 1
Light colour White
Required components:

