

## SIRI-A

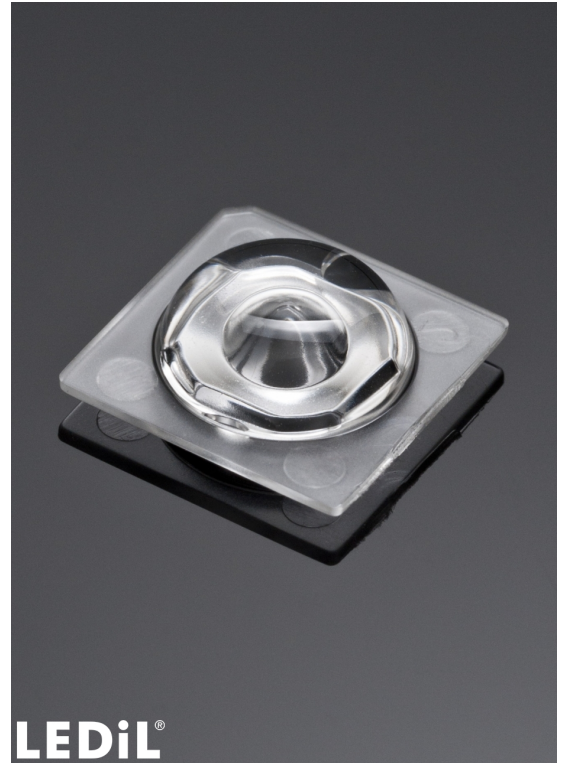
~75° + 135° wide area beam. Assembly with installation tape.

### SPECIFICATION:

Dimensions	13.9 x 13.9 mm
Height	4.6 mm
Fastening	tape, pin
ROHS compliant	yes ⓘ

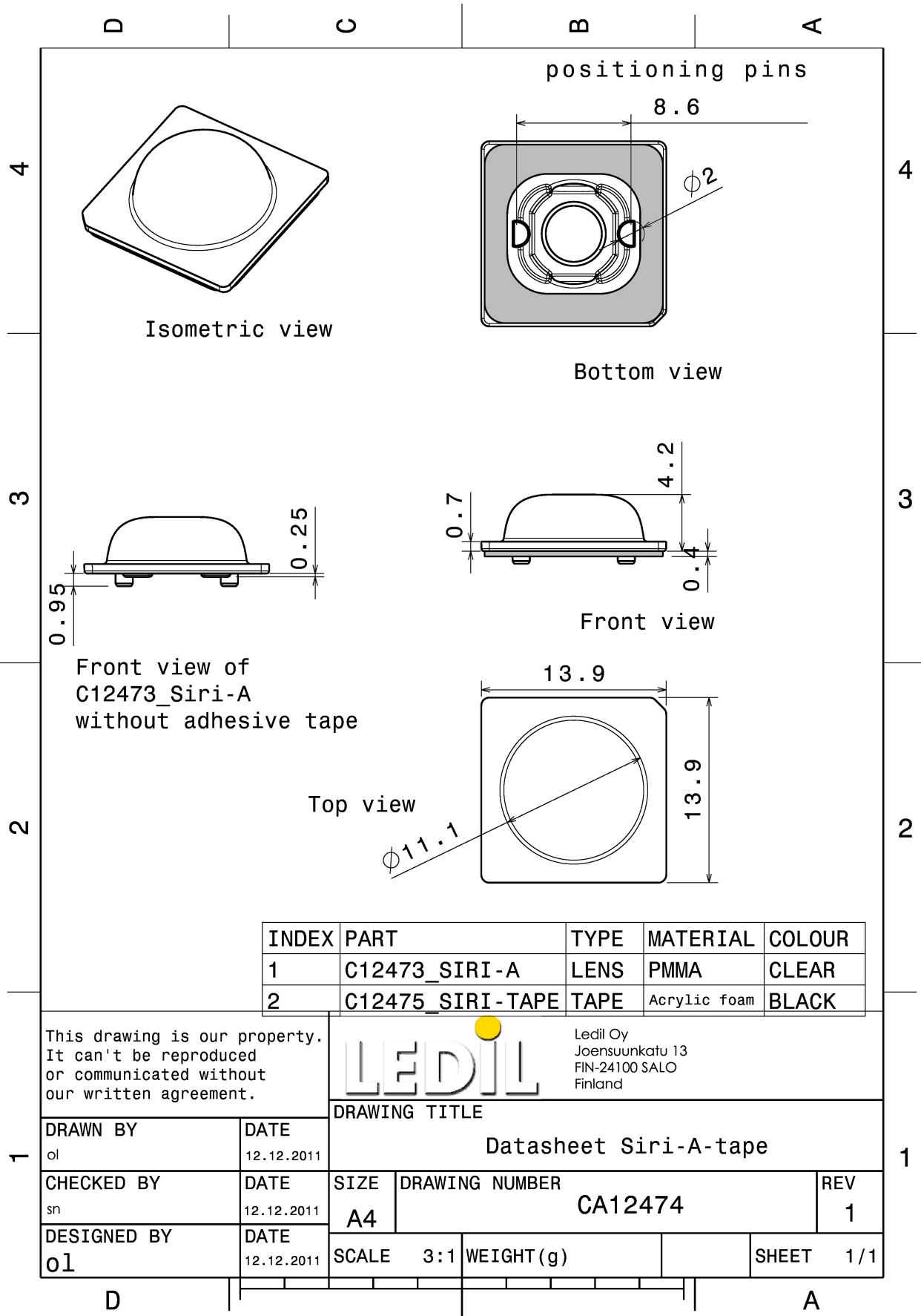
### MATERIALS:

Component	Type	Material	Colour	Finish
SIRI-A	Single lens	PMMA	clear	
SIRI-TAPE	Tape	Acrylic foam		



### ORDERING INFORMATION:

Component		Qty in box	MOQ	MPQ	Box weight (kg)
CA12474_SIRI-A	Single lens	5488	392	196	3.3
» Box size: 450 x 260 x 160 mm					

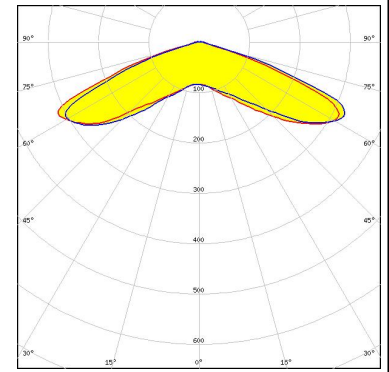


See also our general installation guide: [www.ledil.com/installation\\_guide](http://www.ledil.com/installation_guide)

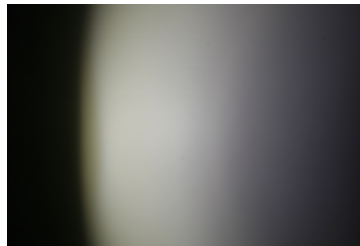
### OPTICAL RESULTS (MEASURED):



LED XP-G2  
FWHM / FWTM 142.0° / 151.0°  
Efficiency 94 %  
Peak intensity 0.3 cd/lm  
LEDs/each optic 1  
Light colour White  
Required components:



LED LUXEON R  
FWHM / FWTM 75.0 + 134.0°  
Efficiency 94 %  
Peak intensity 0.4 cd/lm  
LEDs/each optic 1  
Light colour White  
Required components:



LED NVSxx19A  
FWHM / FWTM 58.0 + 132.0°  
Efficiency 94 %  
Peak intensity 0.3 cd/lm  
LEDs/each optic 1  
Light colour White  
Required components:

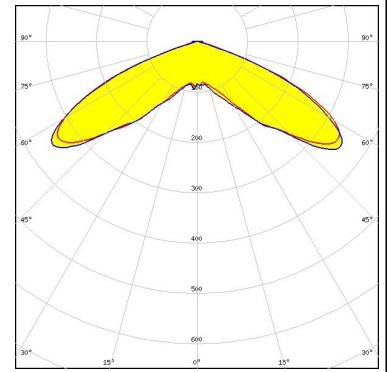


LED OSOLON Square PC  
FWHM / FWTM 66.0 + 134.0°  
Efficiency 94 %  
Peak intensity 0.3 cd/lm  
LEDs/each optic 1  
Light colour White  
Required components:

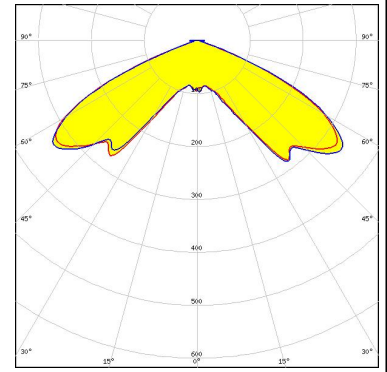
### OPTICAL RESULTS (SIMULATED):



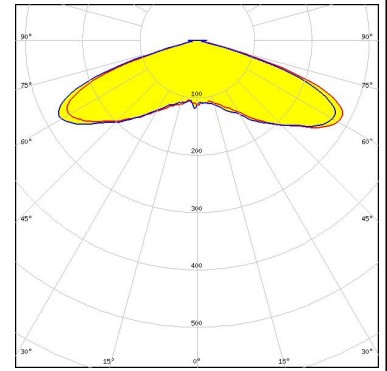
LED J Series 2835  
 FWHM / FWTM 135.0° / 146.0°  
 Efficiency 96 %  
 Peak intensity 0.4 cd/lm  
 LEDs/each optic 1  
 Light colour White  
 Required components:



LED J Series 3030  
 FWHM / FWTM 131.0° / 142.0°  
 Efficiency 96 %  
 Peak intensity 0.3 cd/lm  
 LEDs/each optic 1  
 Light colour White  
 Required components:



LED XP-G2 HE  
 FWHM / FWTM 143.0 + 144.0° / 152.0°  
 Efficiency 93 %  
 Peak intensity 0.3 cd/lm  
 LEDs/each optic 1  
 Light colour White  
 Required components:



SEOUL SEMICONDUCTOR

LED Z8Y22P  
 FWHM / FWTM 116.0 + 132.0° / 137.0 + 148.0°  
 Efficiency 97 %  
 Peak intensity 0.3 cd/lm  
 LEDs/each optic 1  
 Light colour White  
 Required components:

