

LR2-M

~25° medium beam optimized for LUXEON Rebel. 14.4 mm high assembly with installation tape.

SPECIFICATION:

Dimensions	Ø 21.6 mm
Height	14.4 mm
Fastening	tape, pin
ROHS compliant	yes ⓘ

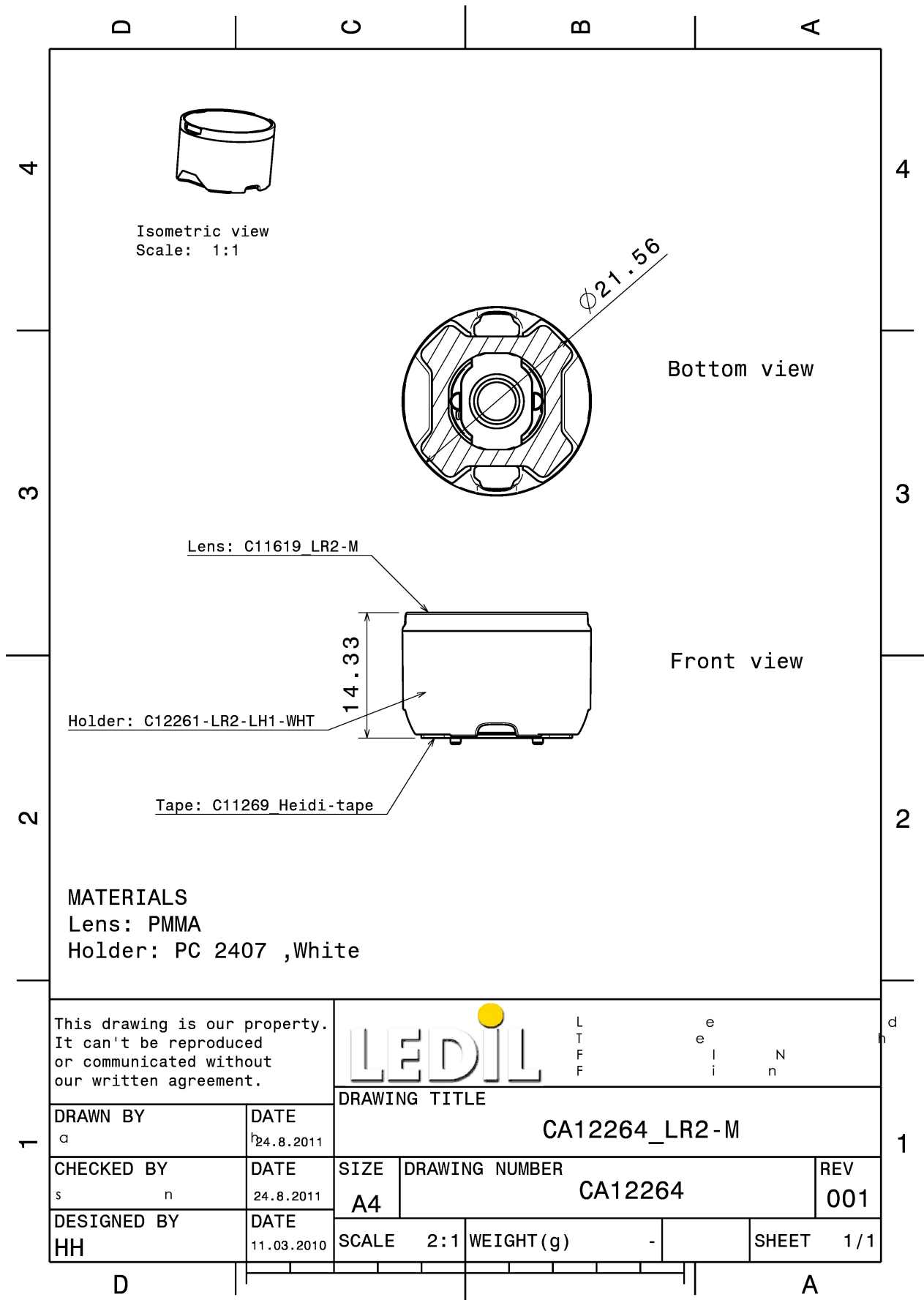
MATERIALS:

Component	Type	Material	Colour	Finish
LXP2-M	Single lens	PMMA	clear	
LR2-LH1-WHT	Holder	PC	white	
HEIDI-TAPE	Tape	Acrylic foam	black	

ORDERING INFORMATION:

Component	Type	Qty in box	MOQ	MPQ	Box weight (kg)
CA12264_LR2-M	Single lens	1680		112	9.0
» Box size: 480 x 280 x 300 mm					





This drawing is our property. It can't be reproduced or communicated without our written agreement.



DRAWN BY a		DATE 24.8.2011	DRAWING TITLE CA12264_LR2-M			
CHECKED BY s n		DATE 24.8.2011	SIZE A4	DRAWING NUMBER CA12264		REV 001
DESIGNED BY HH		DATE 11.03.2010	SCALE 2:1	WEIGHT (g) -	SHEET 1/1	

See also our general installation guide: www.ledil.com/installation_guide

OPTICAL RESULTS (MEASURED):



LED LUXEON Rebel
FWHM / FWTM 23.0°
Efficiency 93 %
LEDs/each optic 1
Light colour White
Required components:

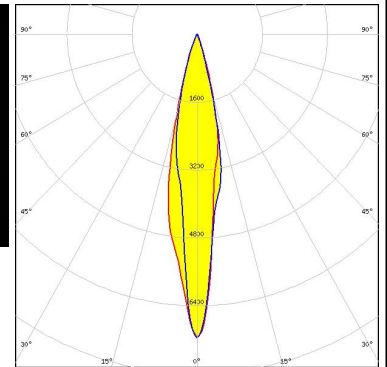


LED NCSxx19B
FWHM / FWTM 25.0° / 42.0°
Efficiency 90 %
Peak intensity 4.9 cd/m
LEDs/each optic 1
Light colour White
Required components:



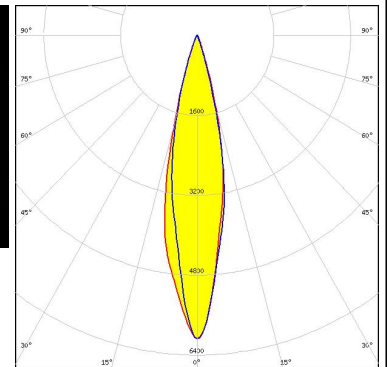
Opto Semiconductors

LED OSLOM Black Flat (LUW HWQP)
FWHM / FWTM 17.0° / 37.0°
Efficiency 94 %
Peak intensity 7.2 cd/m
LEDs/each optic 1
Light colour White
Required components:



Opto Semiconductors

LED OSLOM SSL 150
FWHM / FWTM 23.0° / 39.0°
Efficiency 94 %
Peak intensity 6.1 cd/m
LEDs/each optic 1
Light colour White
Required components:



OPTICAL RESULTS (SIMULATED):

OSRAM
Opto Semiconductors

LED	OSLON Square CSSRM2/CSSRM3
FWHM / FWTM	26.0° / 43.0°
Efficiency	94 %
Peak intensity	4.5 cd/lm
LEDs/each optic	1
Light colour	White
Required components:	

