

## EVA-O

~40° x 15° oval beam optimized for LUXEON M and MX. Assembly with holder and installation tape.

### SPECIFICATION:

Dimensions	Ø 37.7 mm
Height	17.2 mm
Fastening	tape
ROHS compliant	yes ⓘ

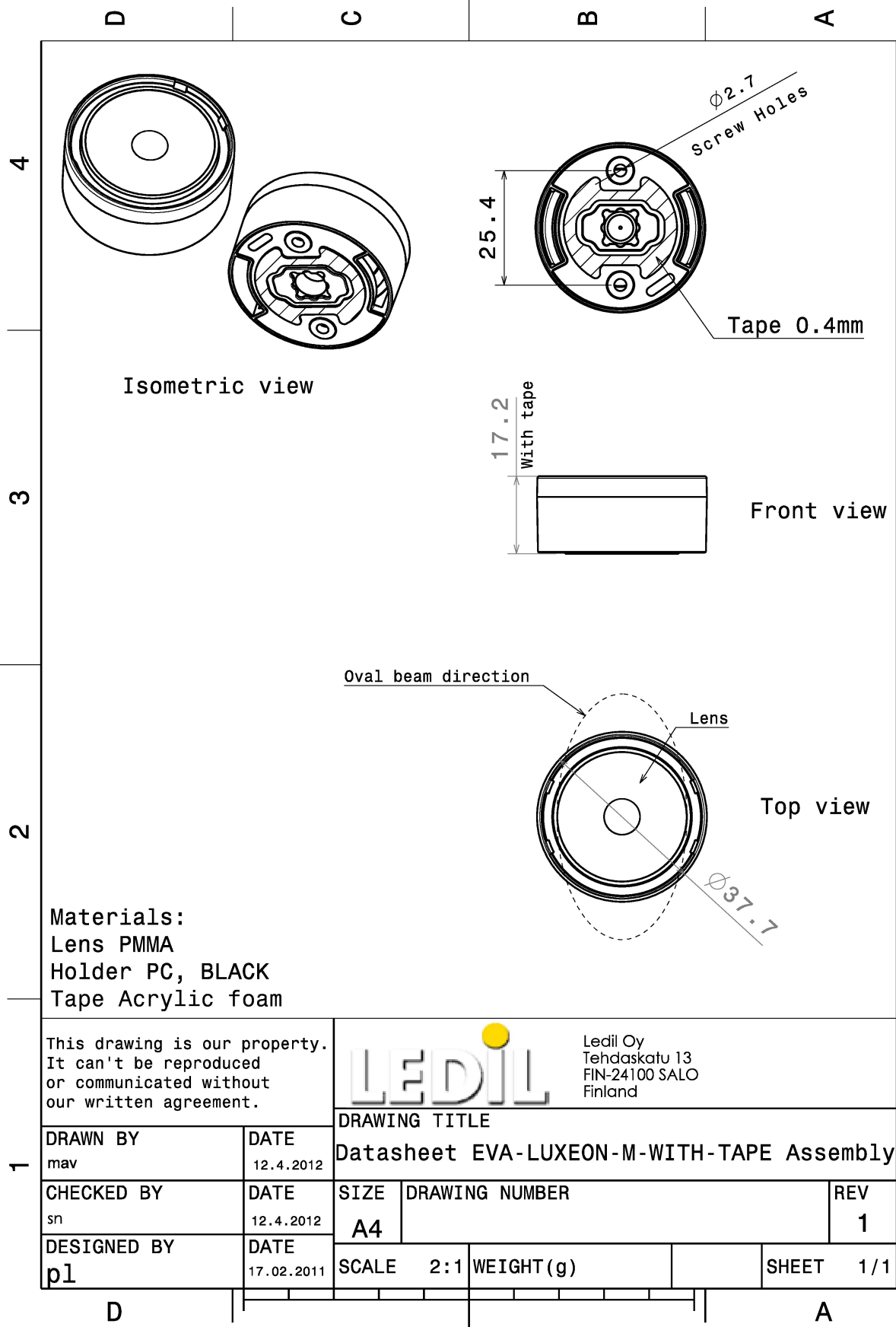
### MATERIALS:

Component	Type	Material	Colour	Finish
EVA-O	Single lens	PMMA	clear	
EVA-HLD-LUXEON-M	Holder	PC	black	
SPUTNIK-TAPE	Tape	Acrylic foam	black	

### ORDERING INFORMATION:


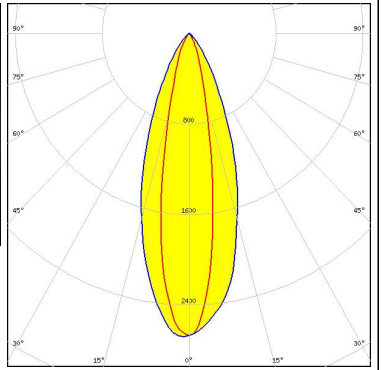

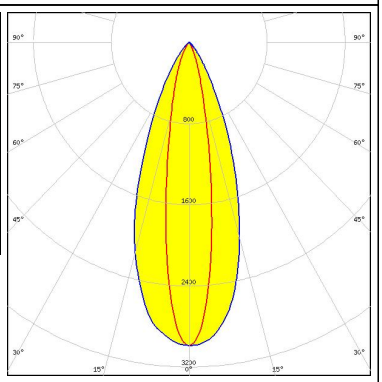

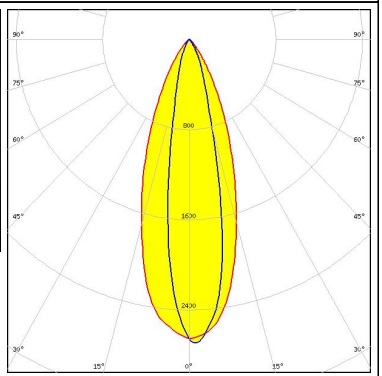
Component		Qty in box	MOQ	MPQ	Box weight (kg)
CA12858_EVA-O	Single lens	675	90	45	9.8
» Box size: 480 x 280 x 300 mm					





See also our general installation guide: [www.ledil.com/installation\\_guide](http://www.ledil.com/installation_guide)

### OPTICAL RESULTS (MEASURED):

<p><b>CREE</b> LED</p> <p>LED MK-R            FWHM / FWTM 38.0 + 20.0° / 70.0 + 44.0°            Efficiency 84 %            Peak intensity 2.7 cd/lm            LEDs/each optic 1            Light colour White            Required components:</p>		
<p><b>LUMILEDS</b></p> <p>LED LUXEON 5050 Round LES            FWHM / FWTM 40.0 + 18.0° / 69.0 + 42.0°            Efficiency 86 %            Peak intensity 3 cd/lm            LEDs/each optic 1            Light colour White            Required components:</p>		
<p><b>LUMILEDS</b></p> <p>LED LUXEON M/MX            FWHM / FWTM 37.0 + 20.0° / 70.0 + 44.0°            Efficiency 84 %            Peak intensity 2.7 cd/lm            LEDs/each optic 1            Light colour White            Required components:</p>		

### OPTICAL RESULTS (SIMULATED):



LED	XP-E2
FWHM / FWTM	36.0 + 16.0° / 68.0 + 27.0°
Efficiency	92 %
Peak intensity	4.3 cd/lm
LEDs/each optic	1
Light colour	Green
Required components:	

