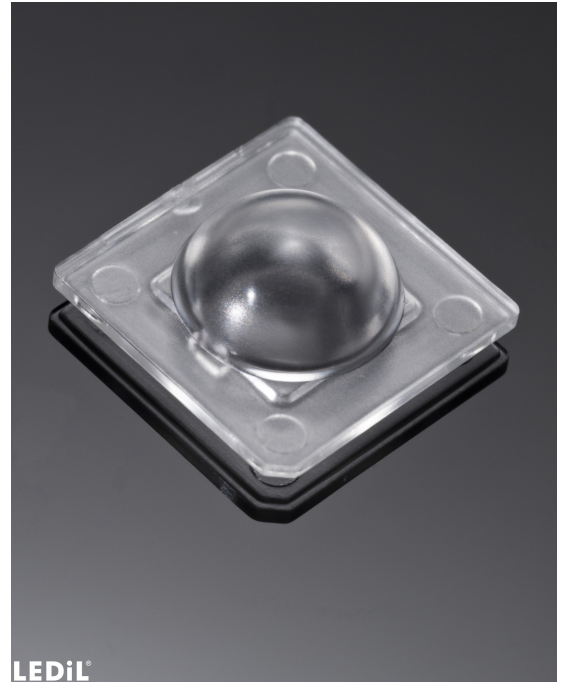


SIRI-DIFF

~145° wide diffused beam. Assembly with installation tape.

SPECIFICATION:

Dimensions	13.9 x 13.9 mm
Height	5.3 mm
Fastening	tape
ROHS compliant	yes ⓘ

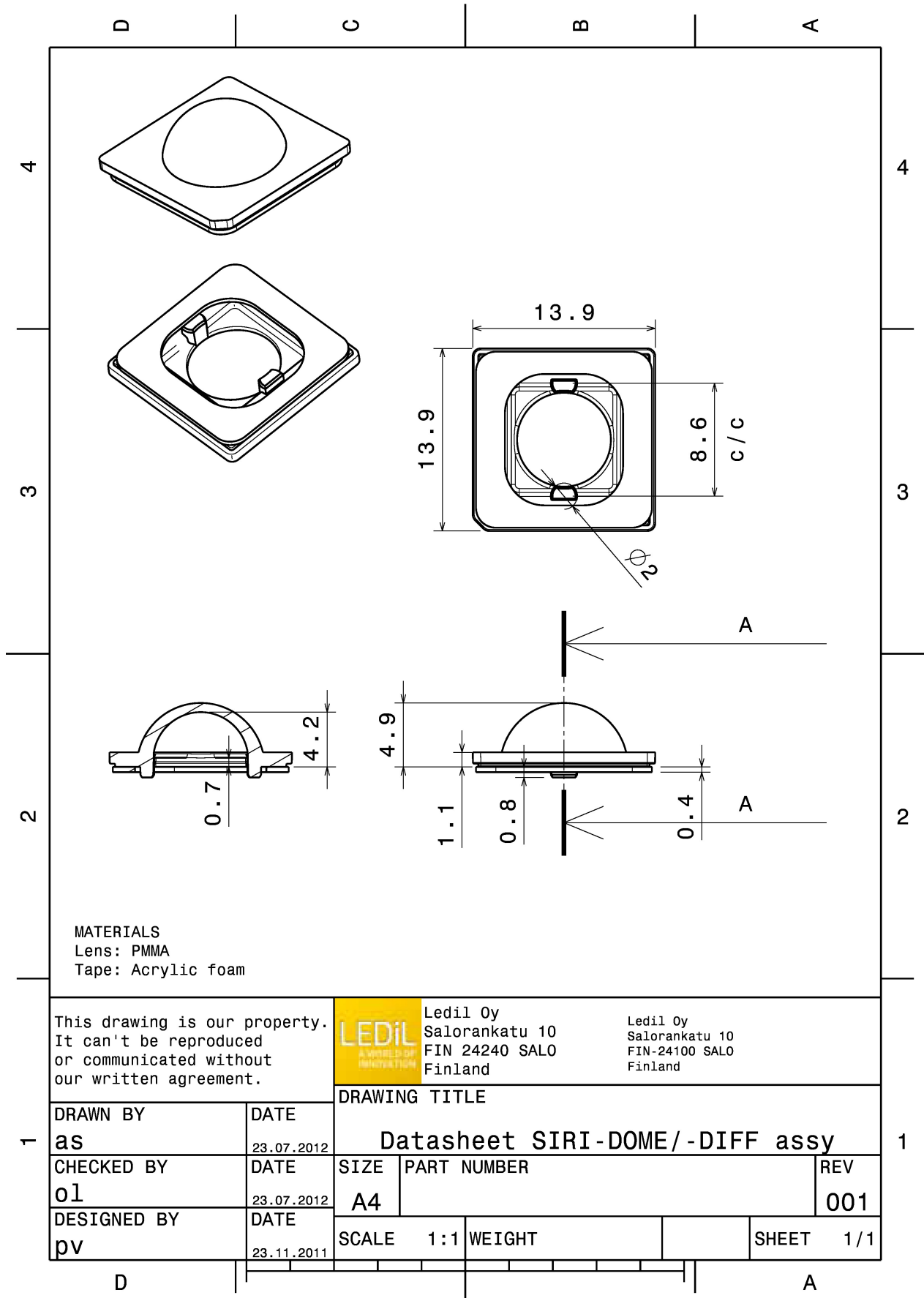


MATERIALS:

Component	Type	Material	Colour	Finish
SIRI-DIFF	Single lens	PMMA	clear	
SIRI-TAPE	Tape	Acrylic foam		

ORDERING INFORMATION:

Component		Qty in box	MOQ	MPQ	Box weight (kg)
CA13014_SIRI-DIFF	Single lens	5488	392	196	2.9
» Box size:					



See also our general installation guide: www.ledil.com/installation_guide

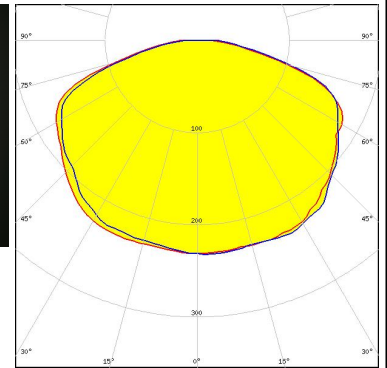
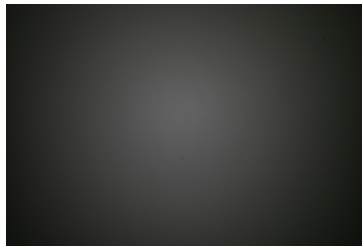
OPTICAL RESULTS (MEASURED):



LED XM-L
 FWHM / FWTM 144.0° / 174.0°
 Efficiency 96 %
 LEDs/each optic 1
 Light colour White
 Required components:



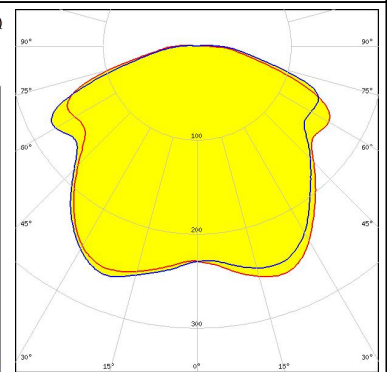
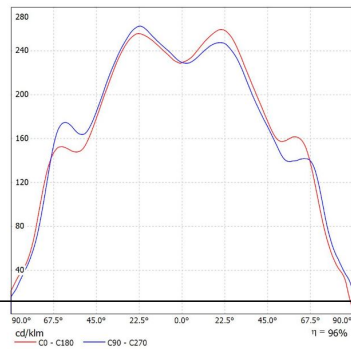
LED XM-L2
 FWHM / FWTM 147.0° / 177.0°
 Efficiency 95 %
 Peak intensity 0.2 cd/lm
 LEDs/each optic 1
 Light colour White
 Required components:



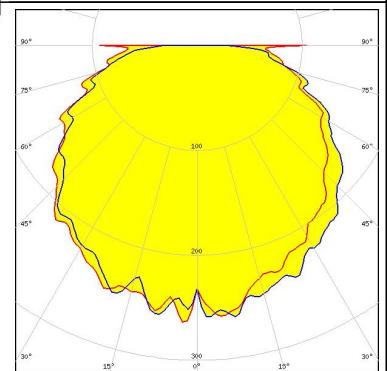
LED XP-G2
 FWHM / FWTM 140.0° / 176.0°
 Efficiency 96 %
 Peak intensity 0.3 cd/lm
 LEDs/each optic 1
 Light colour White
 Required components:

Ledil CA13014_SIRI-DIFF_(XP-G2)/LDC (Linear)

Luminaire: Ledil CA13014_SIRI-DIFF_(XP-G2)
 Lamp: 1 x Cree XP-G2_2P60W(F114000/MSFE4)
 101.278lm@250mA_CCT=4934K_P=0.76W_I=0.25A



LED XT-E
 FWHM / FWTM 148.0°
 Efficiency 95 %
 Peak intensity 0.2 cd/lm
 LEDs/each optic 1
 Light colour White
 Required components:



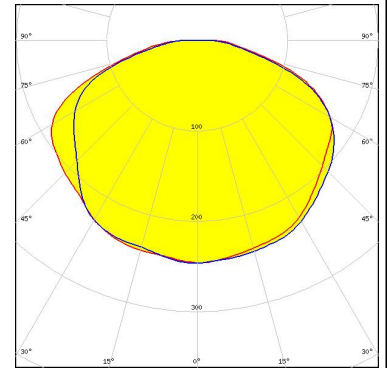
OPTICAL RESULTS (MEASURED):



LED LUXEON A
FWHM / FWTM 142.0°
Efficiency %
LEDs/each optic 1
Light colour White
Required components:



LED NS9x383
FWHM / FWTM 139.0° / 175.0°
Efficiency 94 %
Peak intensity 0.3 cd/lm
LEDs/each optic 1
Light colour White
Required components:



LED NVSxx19B/NVSxx19C
FWHM / FWTM 146.0° / 176.0°
Efficiency 96 %
Peak intensity 0.2 cd/lm
LEDs/each optic 1
Light colour White
Required components:

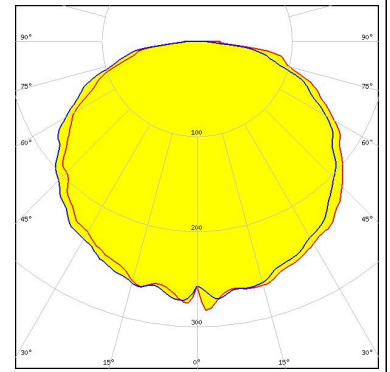


LED OSLOM Square EC
FWHM / FWTM 132.0°
Efficiency %
LEDs/each optic 1
Light colour White
Required components:

OPTICAL RESULTS (SIMULATED):



LED XP-G2 HE
FWHM / FWTM 125.0° / 171.0°
Efficiency 95 %
Peak intensity 0.3 cd/lm
LEDs/each optic 1
Light colour White
Required components:



LED Z5M1/Z5M2
FWHM / FWTM 113.0° / 162.0°
Efficiency 95 %
Peak intensity 0.3 cd/lm
LEDs/each optic 1
Light colour White
Required components:

