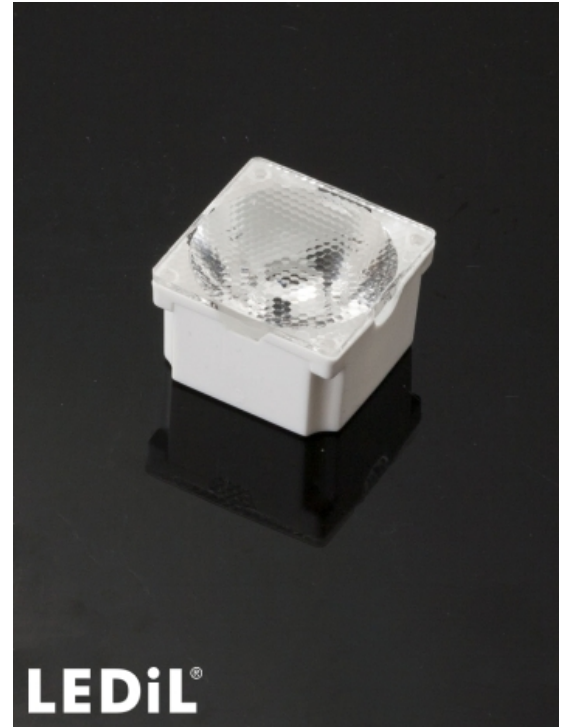


## G2-OSS-2-SS

~15° smooth spot beam optimized for Osram Golden Dragon+. G2 assembly with light, white holder.

### TECHNICAL SPECIFICATIONS:

Dimensions	21.6 x 21.6 mm
Height	13.9 mm
Fastening	tape
ROHS compliant	yes ⓘ

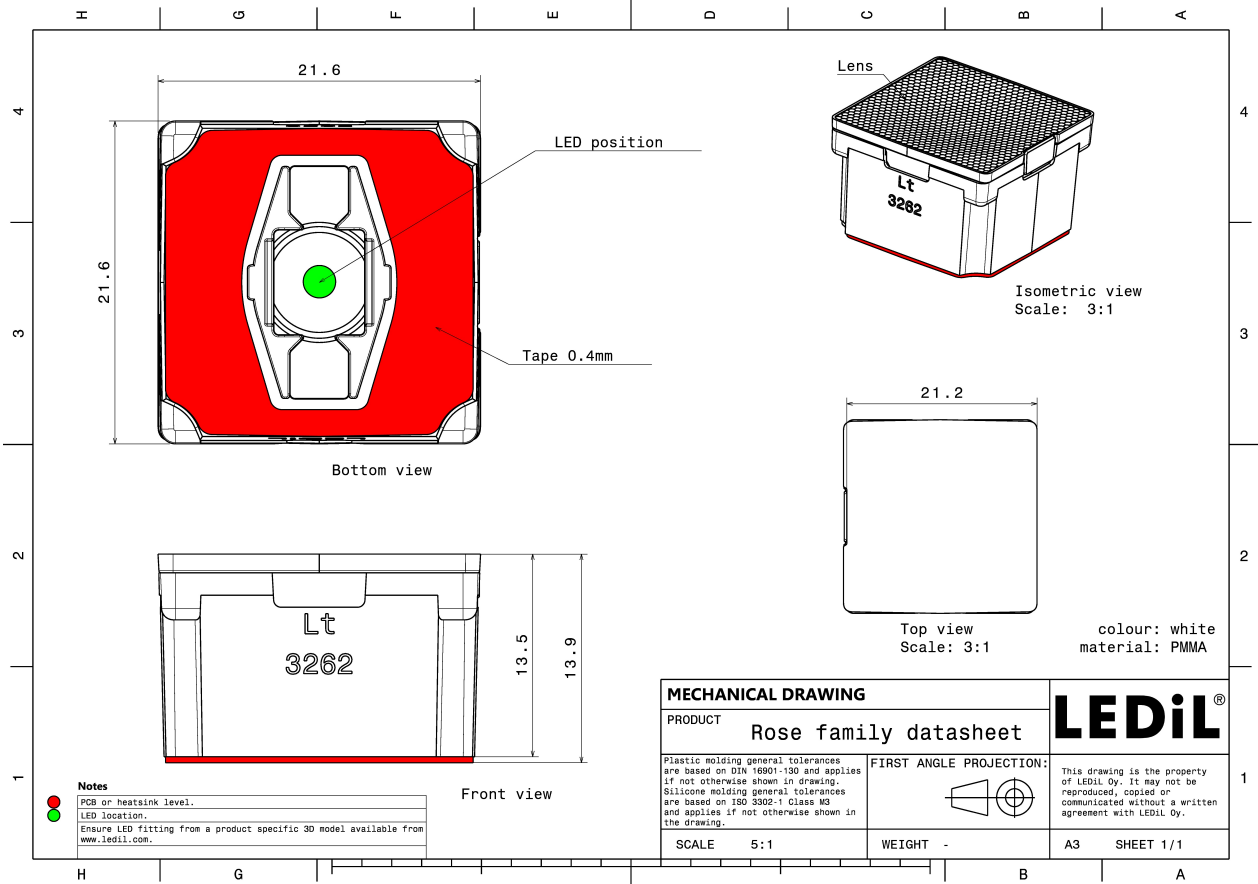


### MATERIAL SPECIFICATIONS:

Component	Type	Material	Colour	Finish
ROSE2-SS	Single lens	PMMA		
ROSE-LT-HLD	Holder	PC	white	
ROSE-TAPE	Tape	Acrylic foam	black	

### ORDERING INFORMATION:

Component	Type	Qty in box	MOQ	MPQ	Box weight (kg)
CA13612_G2-OSS-2-SS	Single lens	1440	360	180	6.0
» Box size: 451 x 254 x 152 mm					



See also our general installation guide: [www.ledil.com/installation\\_guide](http://www.ledil.com/installation_guide)

## PHOTOMETRIC DATA (MEASURED):

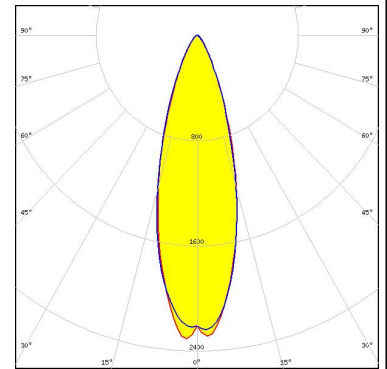
**OSRAM**  
Opto Semiconductors

LED	Golden Dragon+
FWHM / FWTM	12.0° / 22.0°
Efficiency	92 %
Peak intensity	16 cd/lm
LEDs/each optic	1
Light colour	White
Required components:	

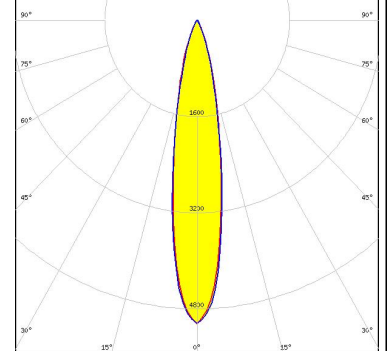
#### PHOTOMETRIC DATA (SIMULATED):



**LED** J Series 5050 Round LES  
**FWHM / FWTM** 18.0° / 43.0°  
**Efficiency** 92 %  
**Peak intensity** 5.2 cd/lm  
**LEDs/each optic** 1  
**Light colour** White  
**Required components:**



**LED** LUXEON 5050 Square LES  
**FWHM / FWTM** 19.0° / 42.0°  
**Efficiency** 93 %  
**Peak intensity** 5.1 cd/lm  
**LEDs/each optic** 1  
**Light colour** White  
**Required components:**



**LED** Duris S8  
**FWHM / FWTM** 21.0° / 46.0°  
**Efficiency** 92 %  
**Peak intensity** 4.2 cd/lm  
**LEDs/each optic** 1  
**Light colour** White  
**Required components:**

