

G2-OSS-2-RS

~11° spot beam optimized for Osram Golden Dragon+. G2 assembly with light, white holder.

TECHNICAL SPECIFICATIONS:

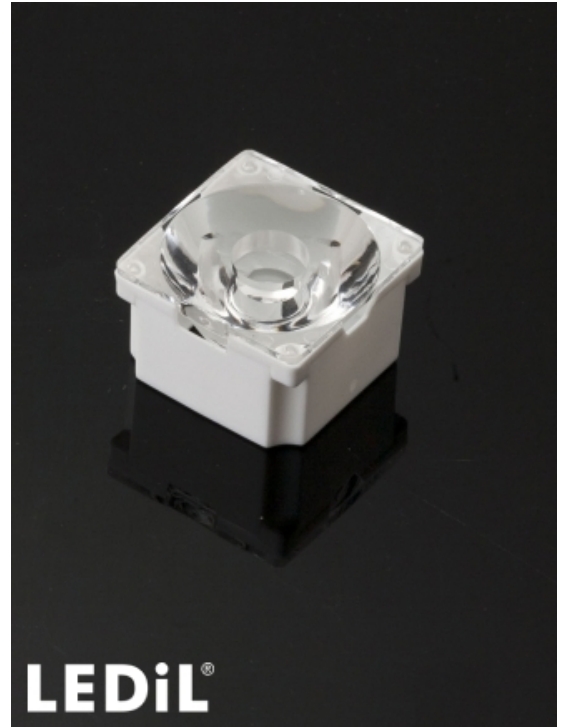
Dimensions	21.6 x 21.6 mm
Height	13.9 mm
Fastening	tape
ROHS compliant	yes ⓘ

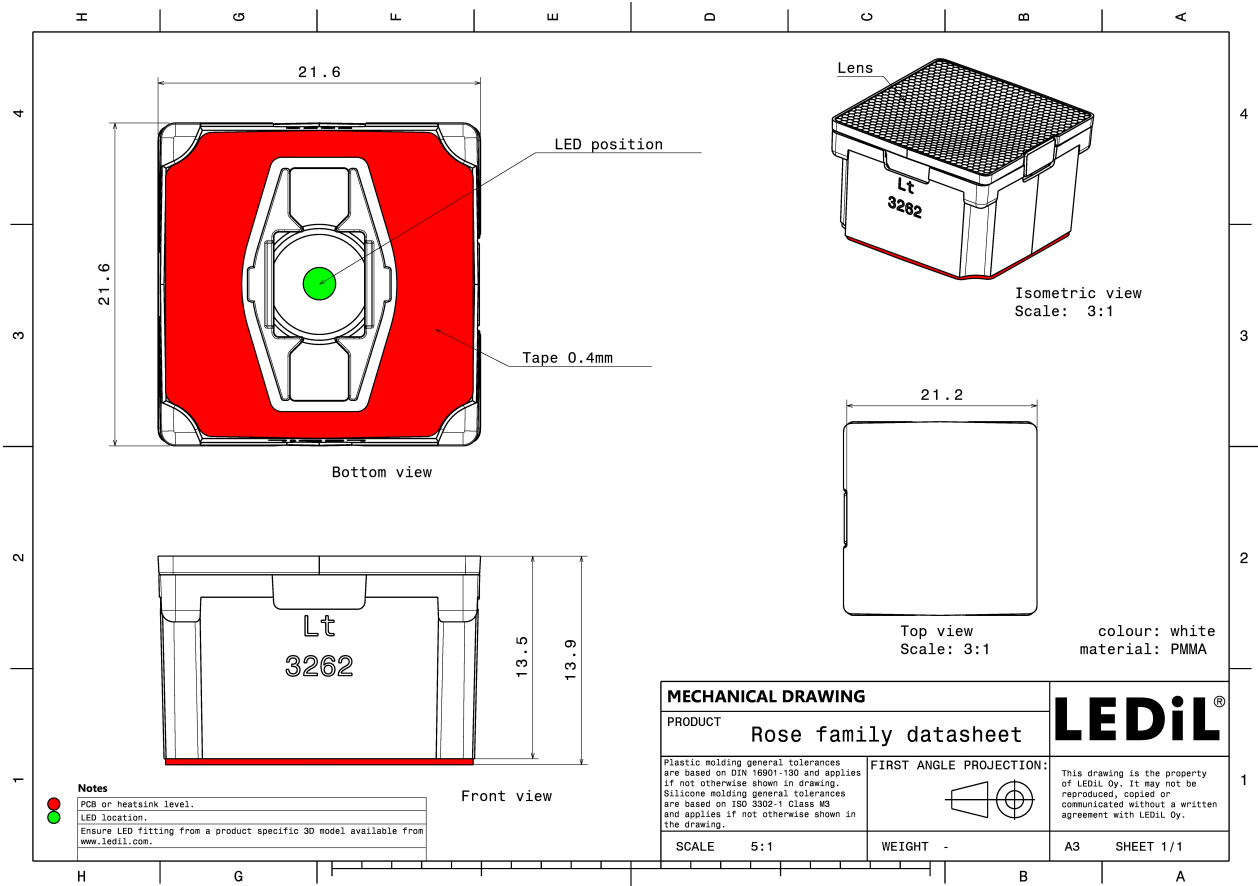
MATERIAL SPECIFICATIONS:

Component	Type	Material	Colour	Finish
ROSE-RS	Single lens	PMMA	clear	
ROSE-LT-HLD	Holder	PC	white	
ROSE-TAPE	Tape	Acrylic foam	black	

ORDERING INFORMATION:

Component	Type	Qty in box	MOQ	MPQ	Box weight (kg)
CA13613_G2-OSS-2-RS » Box size: 451 x 254 x 152 mm	Single lens	1440		180	5.9





See also our general installation guide: www.ledil.com/installation_guide

PHOTOMETRIC DATA (MEASURED):

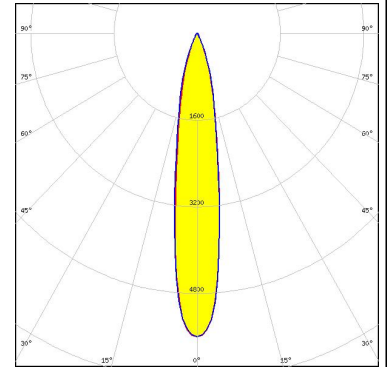
OSRAM
Opto Semiconductors

LED	Golden Dragon+
FWHM / FWTM	7.0° / 18.0°
Efficiency	%
Peak intensity	35.5 cd/lm
LEDs/each optic	1
Light colour	White
Required components:	

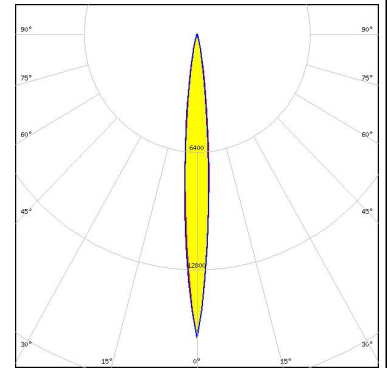
PHOTOMETRIC DATA (SIMULATED):



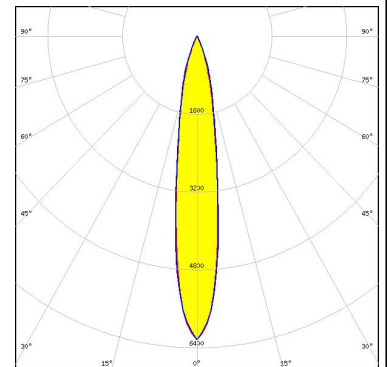
LED J Series 5050 Round LES
 FWHM / FWTM 17.0° / 41.0°
 Efficiency 92 %
 Peak intensity 5.6 cd/lm
 LEDs/each optic 1
 Light colour White
 Required components:



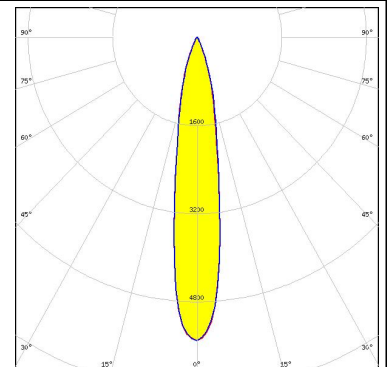
LED XD16
 FWHM / FWTM 10.0° / 22.0°
 Efficiency 88 %
 Peak intensity 16.5 cd/lm
 LEDs/each optic 1
 Light colour White
 Required components:



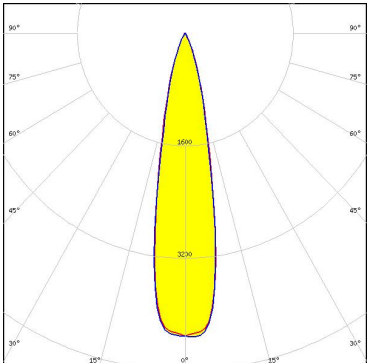
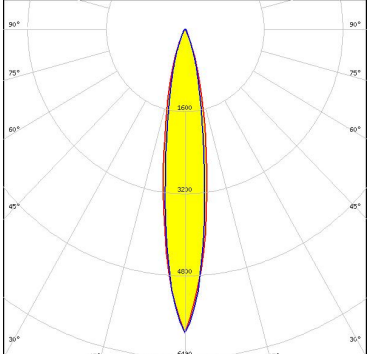
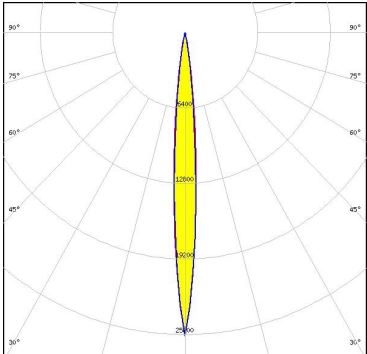
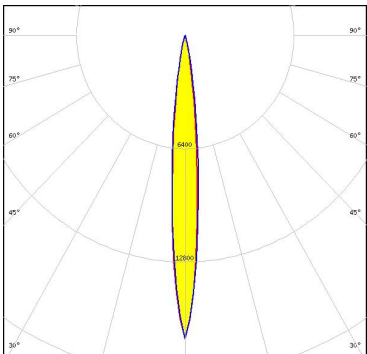
LED LUXEON 5050 Round LES
 FWHM / FWTM 17.0° / 40.0°
 Efficiency 93 %
 Peak intensity 6.2 cd/lm
 LEDs/each optic 1
 Light colour White
 Required components:



LED NFMW48xA
 FWHM / FWTM 17.0° / 42.0°
 Efficiency 92 %
 Peak intensity 5.5 cd/lm
 LEDs/each optic 1
 Light colour White
 Required components:



PHOTOMETRIC DATA (SIMULATED):

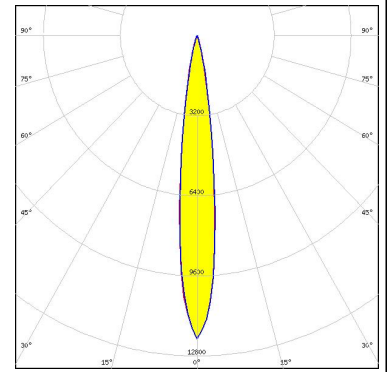
<p>NICHIA</p> <p>LED NV4x144A FWHM / FWTM 22.0° / 42.0° Efficiency 86 % Peak intensity 4.3 cd/lm LEDs/each optic 1 Light colour White Required components:</p>	
<p>OSRAM Opto Semiconductors</p> <p>LED Duris S8 FWHM / FWTM 16.0° / 40.0° Efficiency 92 % Peak intensity 5.9 cd/lm LEDs/each optic 1 Light colour White Required components:</p>	
<p>OSRAM Opto Semiconductors</p> <p>LED KW CULPM1.TG FWHM / FWTM 8.0° / 19.0° Efficiency 93 % Peak intensity 25.7 cd/lm LEDs/each optic 1 Light colour White Required components:</p>	
<p>OSRAM Opto Semiconductors</p> <p>LED OSCONIQ P 3737 (2W version) FWHM / FWTM 10.0° / 23.0° Efficiency 94 % Peak intensity 17.2 cd/lm LEDs/each optic 1 Light colour White Required components:</p>	

PHOTOMETRIC DATA (SIMULATED):

OSRAM

Osram Opto Semiconductors

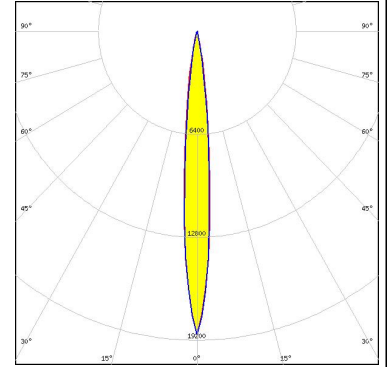
LED OSCONIQ P 3737 (3W version)
 FWHM / FWTM 14.0° / 26.0°
 Efficiency 90 %
 Peak intensity 12.1 cd/lm
 LEDs/each optic 1
 Light colour White
 Required components:



OSRAM

Osram Opto Semiconductors

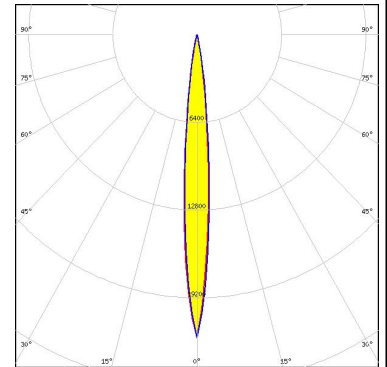
LED OSLON Square CSSRM2/CSSRM3
 FWHM / FWTM 10.0° / 22.0 + 20.0°
 Efficiency 93 %
 Peak intensity 18.9 cd/lm
 LEDs/each optic 1
 Light colour White
 Required components:



OSRAM

Osram Opto Semiconductors

LED OSLON SSL 80
 FWHM / FWTM 10.0° / 20.0°
 Efficiency 94 %
 Peak intensity 22.1 cd/lm
 LEDs/each optic 1
 Light colour White
 Required components:



SEOUL SEMICONDUCTOR

LED Z5M1/Z5M2
 FWHM / FWTM 10.0° / 22.0°
 Efficiency 93 %
 Peak intensity 19.3 cd/lm
 LEDs/each optic 1
 Light colour White
 Required components:

