

EVA-W

~40° wide beam. Assembly with holder including location pins and installation tape.

SPECIFICATION:

Dimensions	Ø 37.7 mm
Height	17.2 mm
Fastening	tape, pin
ROHS compliant	yes ⓘ

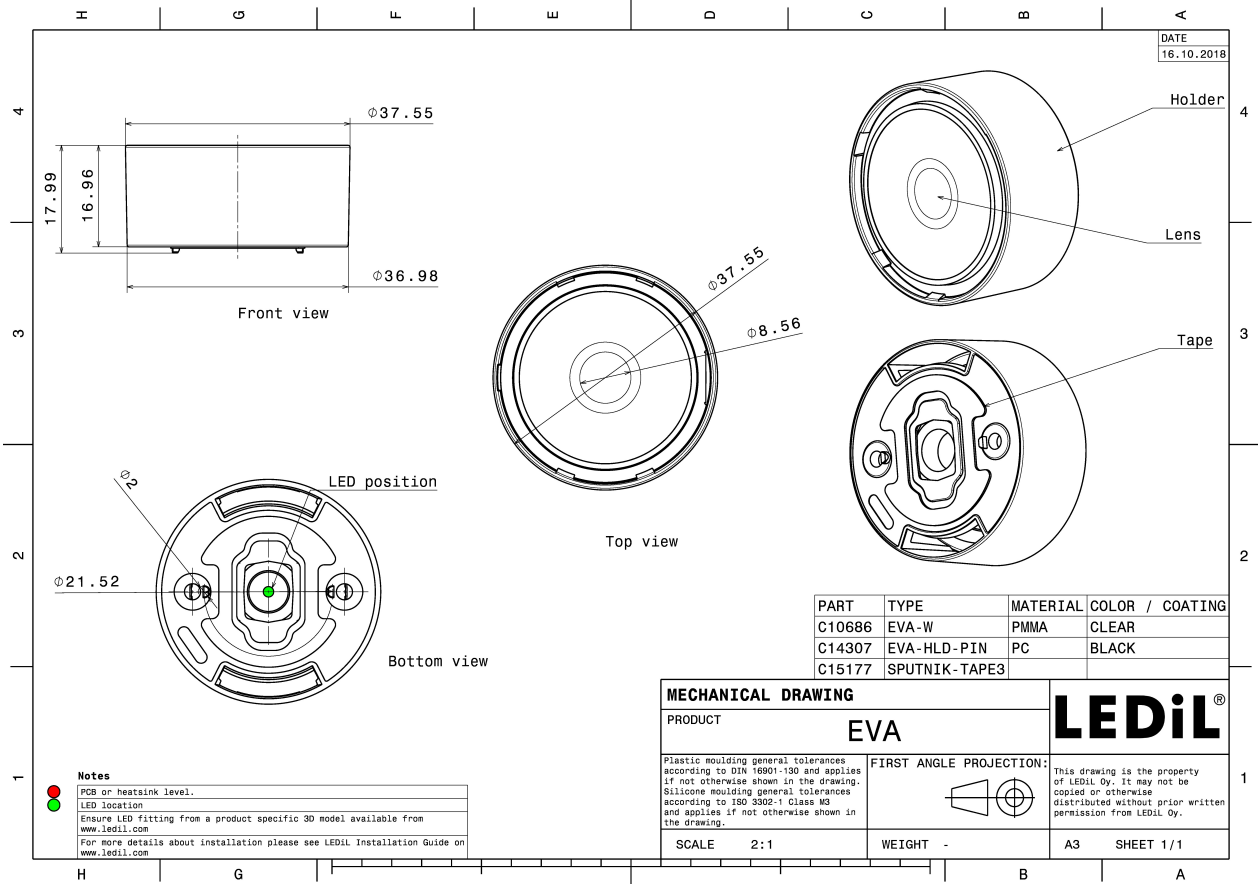


MATERIALS:

Component	Type	Material	Colour	Finish
EVA-W	Single lens	PMMA	clear	
EVA-HLD-PIN	Holder	PC	black	
SPUTNIK-TAPE3	Tape	Acrylic foam	black	

ORDERING INFORMATION:

Component		Qty in box	MOQ	MPQ	Box weight (kg)
CA14309_EVA-W	Single lens	675	90	45	9.7
» Box size: 480 x 280 x 300 mm					

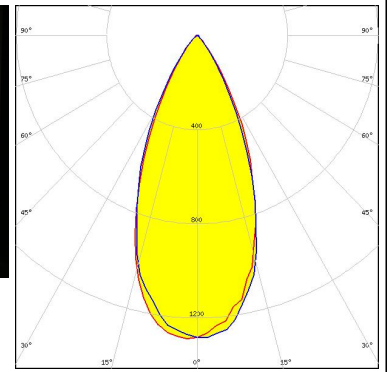


See also our general installation guide: www.ledil.com/installation_guide

OPTICAL RESULTS (MEASURED):

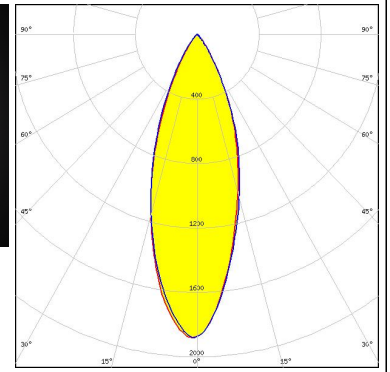
LUMILEDS

LED LUXEON M/MX
 FWHM / FWTM 45.0° / 73.0°
 Efficiency 80 %
 Peak intensity 1.3 cd/lm
 LEDs/each optic 1
 Light colour White
 Required components:



NICHIA

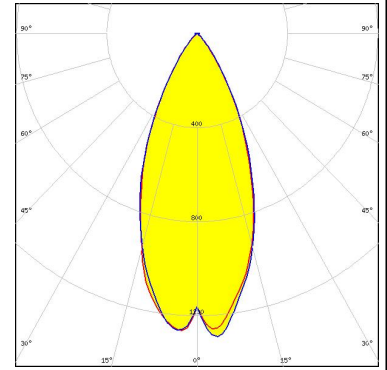
LED NVSW219F
 FWHM / FWTM 35.0° / 66.0°
 Efficiency 82 %
 Peak intensity 1.9 cd/lm
 LEDs/each optic 1
 Light colour White
 Required components:



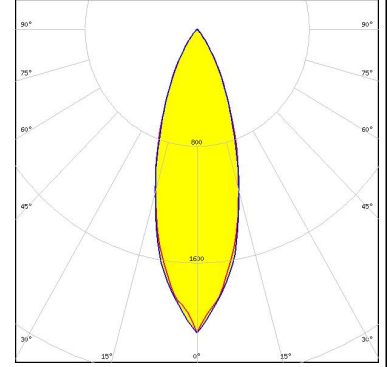
OPTICAL RESULTS (SIMULATED):



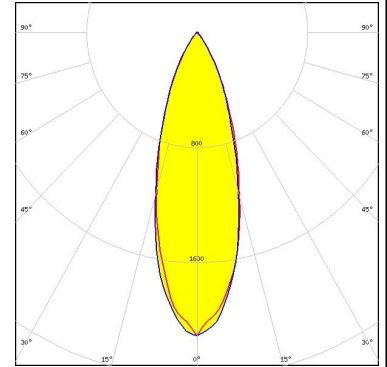
LED XHP35.2 HD
 FWHM / FWTM 44.0° / 74.0°
 Efficiency 78 %
 Peak intensity 1.3 cd/lm
 LEDs/each optic 1
 Light colour White
 Required components:



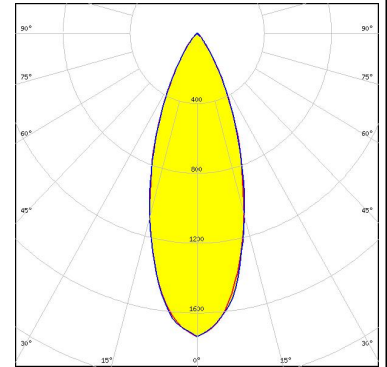
LED XP-E2
 FWHM / FWTM 33.0° / 66.0°
 Efficiency 85 %
 Peak intensity 2.1 cd/lm
 LEDs/each optic 1
 Light colour White
 Required components:



LED XQ-E HI
 FWHM / FWTM 33.0° / 64.0°
 Efficiency 85 %
 Peak intensity 2.1 cd/lm
 LEDs/each optic 1
 Light colour White
 Required components:



LED NVSxE21A
 FWHM / FWTM 37.0° / 69.0°
 Efficiency 83 %
 Peak intensity 1.8 cd/lm
 LEDs/each optic 4
 Light colour White
 Required components:



OPTICAL RESULTS (SIMULATED):

 SEOUL SEMICONDUCTOR	LED: Z8Y22P FWHM / FWTM: 34.0° / 69.0° Efficiency: 95 % Peak intensity: 2 cd/lm LEDs/each optic: 1 Light colour: White Required components:	
 SEOUL SEMICONDUCTOR	LED: Z8Y50P FWHM / FWTM: 39.0° / 71.0° Efficiency: 82 % Peak intensity: 1.6 cd/lm LEDs/each optic: 1 Light colour: White Required components:	