

## EVA-M

~25° medium beam. Assembly with holder including location pins and installation tape.

### SPECIFICATION:

Dimensions	Ø 37.7 mm
Height	17.2 mm
Fastening	tape, pin
ROHS compliant	yes ⓘ

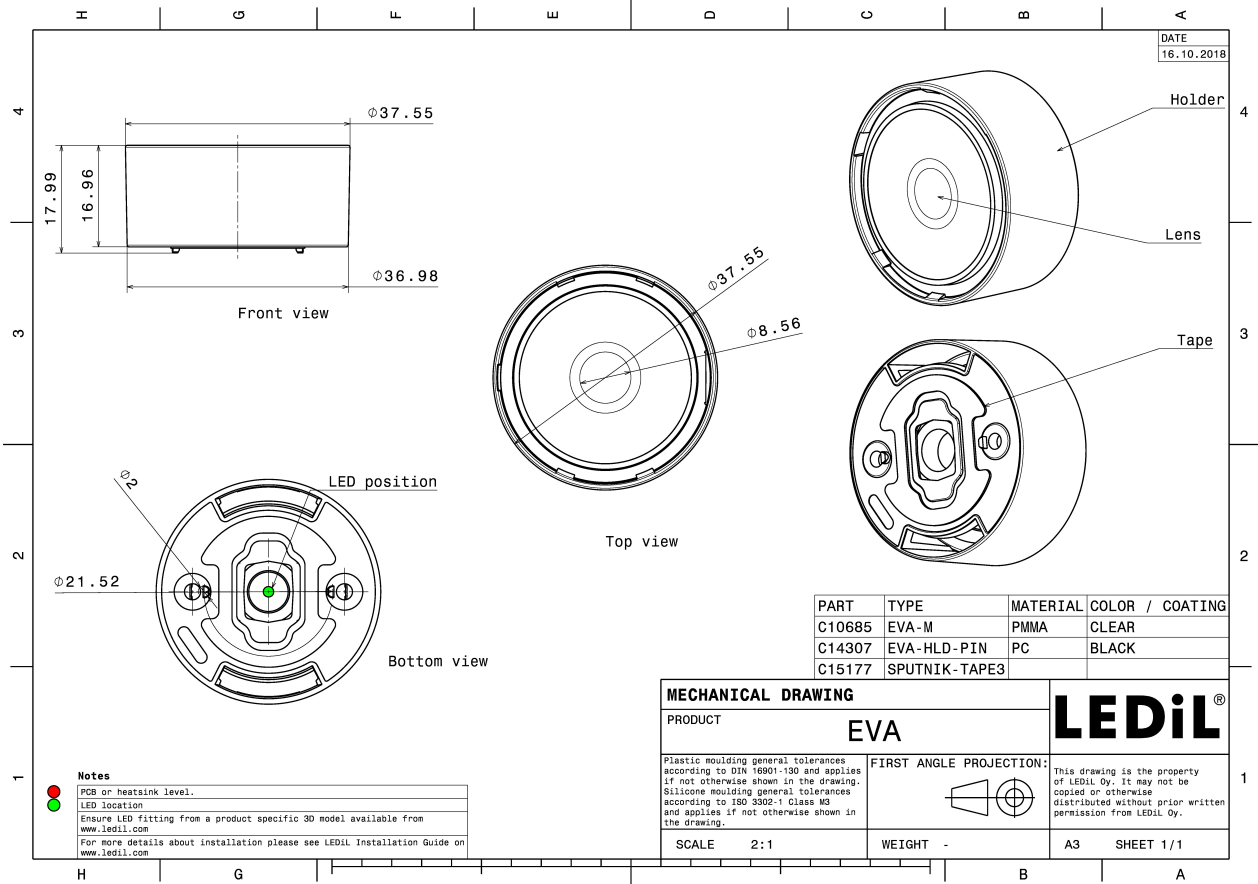
### MATERIALS:

Component	Type	Material	Colour	Finish
EVA-M	Single lens	PMMA	clear	
EVA-HLD-PIN	Holder	PC	black	
SPUTNIK-TAPE3	Tape	Acrylic foam	black	

### ORDERING INFORMATION:

Component		Qty in box	MOQ	MPQ	Box weight (kg)
CA14402_EVA-M	Single lens	675	90	45	10.0
» Box size: 480 x 280 x 300 mm					



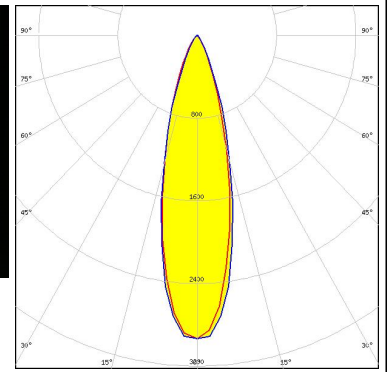


See also our general installation guide: [www.ledil.com/installation\\_guide](http://www.ledil.com/installation_guide)

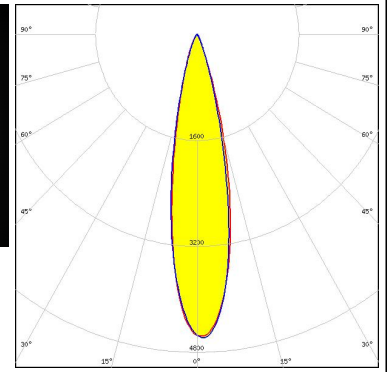
**OPTICAL RESULTS (MEASURED):**



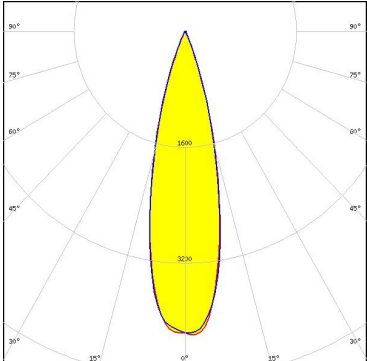
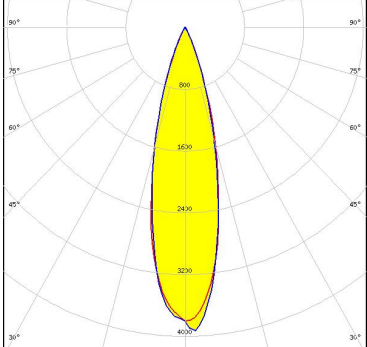
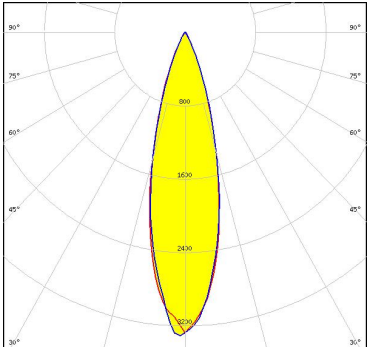
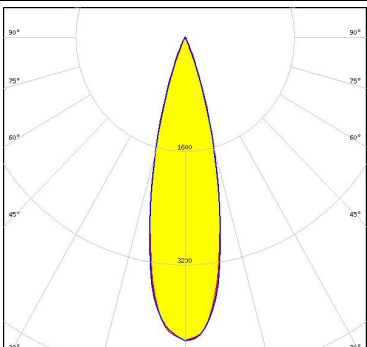
LED LUXEON M/MX  
 FWHM / FWTM 26.0° / 48.0°  
 Efficiency 87 %  
 Peak intensity 2.8 cd/lm  
 LEDs/each optic 1  
 Light colour White  
 Required components:



LED NVSW219F  
 FWHM / FWTM 22.0° / 41.0°  
 Efficiency 87 %  
 Peak intensity 4.6 cd/lm  
 LEDs/each optic 1  
 Light colour White  
 Required components:



### OPTICAL RESULTS (SIMULATED):

<p><b>CREE</b> LEDs</p> <p>LED XE-G            FWHM / FWTM 26.0° / 44.0°            Efficiency 92 %            Peak intensity 4.2 cd/lm            LEDs/each optic 1            Light colour White            Required components:</p>	
<p><b>CREE</b> LEDs</p> <p>LED XHP35 HI            FWHM / FWTM 26.0° / 47.0°            Efficiency 92 %            Peak intensity 3.9 cd/lm            LEDs/each optic 1            Light colour White            Required components:</p>	
<p><b>CREE</b> LEDs</p> <p>LED XHP35.2 HD            FWHM / FWTM 27.0° / 50.0°            Efficiency 87 %            Peak intensity 3.3 cd/lm            LEDs/each optic 1            Light colour White            Required components:</p>	
<p><b>CREE</b> LEDs</p> <p>LED XP-E2            FWHM / FWTM 26.0° / 44.0°            Efficiency 93 %            Peak intensity 4.3 cd/lm            LEDs/each optic 1            Light colour White            Required components:</p>	

### OPTICAL RESULTS (SIMULATED):

