

STRADA-B2

Wide oval beam for area lighting optimized for CREE XP-L. Assembly with installation tape.

TECHNICAL SPECIFICATIONS:

Dimensions	19.6 x 15.5 mm
Height	5.2 mm
Fastening	tape, pin
ROHS compliant	yes ⓘ

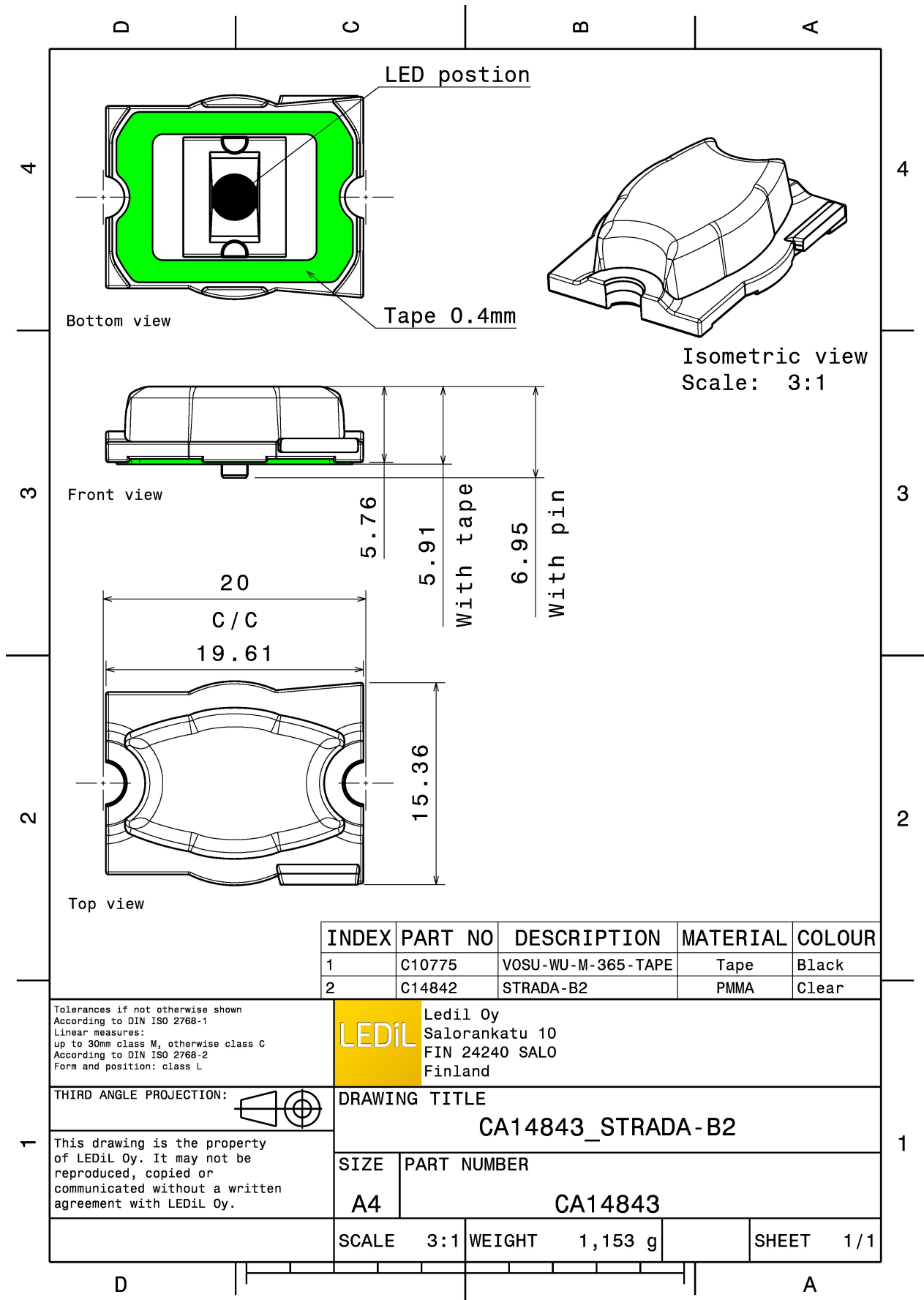
MATERIAL SPECIFICATIONS:

Component	Type	Material	Colour	Finish
STRADA-B2	Single lens	PMMA	clear	
VOSU-WU-M-365-TAPE	Tape			

ORDERING INFORMATION:

Component	Type	Qty in box	MOQ	MPQ	Box weight (kg)
CA14843_STRADA-B2 » Box size: 451 x 254 x 197 mm	Single lens	4320	240	240	5.1





INDEX	PART NO	DESCRIPTION	MATERIAL	COLOUR
1	C10775	VOSU-WU-M-365-TAPE	Tape	Black
2	C14842	STRADA-B2	PMMA	Clear

Tolerances if not otherwise shown
According to DIN ISO 2768-1
Linear measures:
up to 30mm class M, otherwise class C
According to DIN ISO 2768-2
Form and position: class L

LEDiL Ledil Oy
Salorankatu 10
FIN 24240 SALO
Finland

THIRD ANGLE PROJECTION:

DRAWING TITLE
CA14843_STRADA-B2

This drawing is the property of LEDiL Oy. It may not be reproduced, copied or communicated without a written agreement with LEDiL Oy.

SIZE	PART NUMBER
A4	CA14843

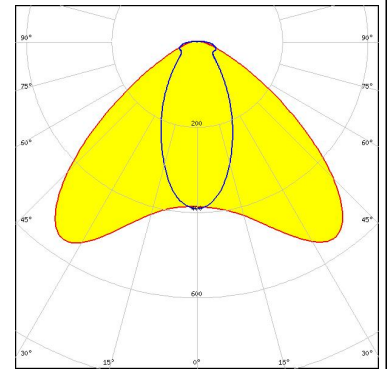
SCALE	3:1	WEIGHT	1,153 g	SHEET	1/1
-------	-----	--------	---------	-------	-----

See also our general installation guide: www.ledil.com/installation_guide

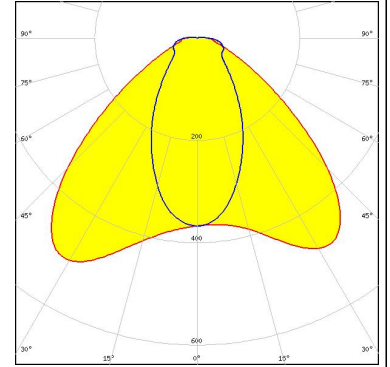
PHOTOMETRIC DATA (MEASURED):



LED XP-L HD
FWHM / FWTM 113.0 + 50.0° / 147.0 + 154.0°
Efficiency 89 %
Peak intensity 0.6 cd/lm
LEDs/each optic 1
Light colour White
Required components:



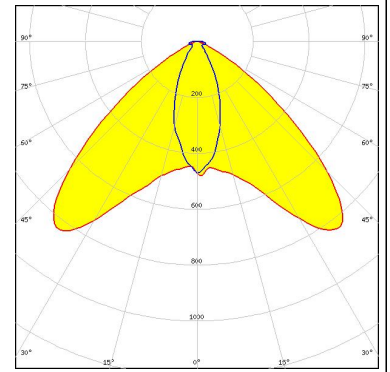
LED XP-L2
FWHM / FWTM 110.0 + 57.0° / 153.0 + 166.0°
Efficiency 88 %
Peak intensity 0.5 cd/lm
LEDs/each optic 1
Light colour White
Required components:



PHOTOMETRIC DATA (SIMULATED):

SAMSUNG

LED LH351B
FWHM / FWTM 102.0 + 40.0° / 126.0 + 77.0°
Efficiency 91 %
Peak intensity 0.8 cd/lm
LEDs/each optic 1
Light colour White
Required components:



SEOUL SEMICONDUCTOR

LED Z5M1/Z5M2
FWHM / FWTM 98.0 + 38.0° / 116.0 + 78.0°
Efficiency 91 %
Peak intensity 1.2 cd/lm
LEDs/each optic 1
Light colour White
Required components:

