

STRADA-SQ-T2-B

IESNA Type II (medium) beam with minimized house side backlight. Version with location pins. Assembly with installation tape.

SPECIFICATION:

Dimensions	25.0 x 25.0 mm
Height	9.1 mm
Fastening	tape
ROHS compliant	yes ⓘ

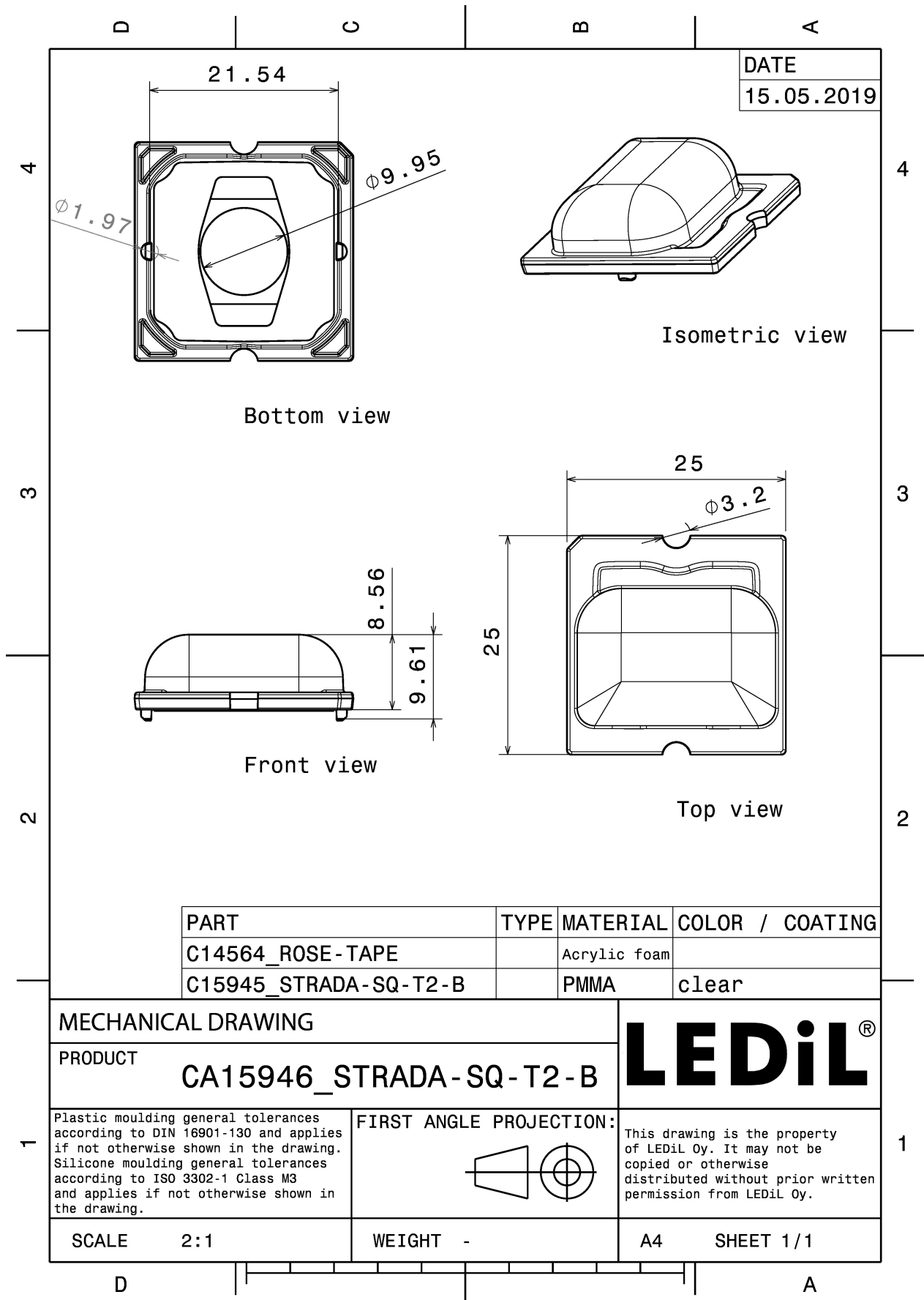


MATERIALS:

Component	Type	Material	Colour	Finish
STRADA-SQ-T2-B	Single lens	PMMA	clear	
ROSE-TAPE	Tape	Acrylic foam	black	

ORDERING INFORMATION:

Component		Qty in box	MOQ	MPQ	Box weight (kg)
CA15946_STRADA-SQ-T2-B	Single lens	2058	294	98	8.7
» Box size: 476 x 273 x 292 mm					

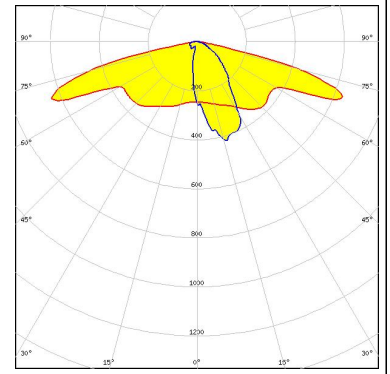


See also our general installation guide: www.ledil.com/installation_guide

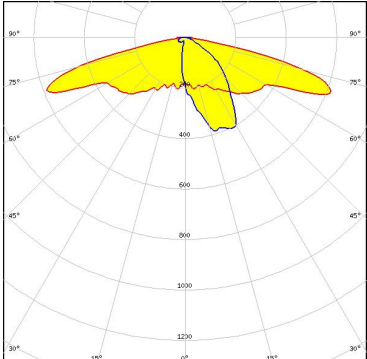
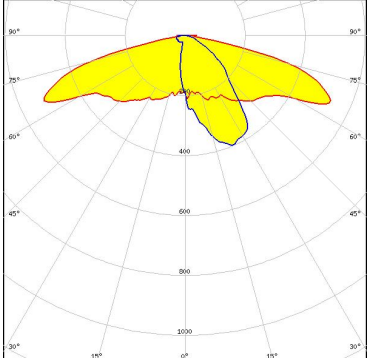
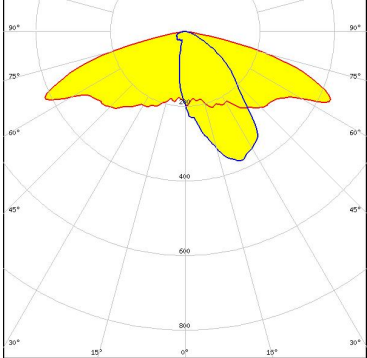
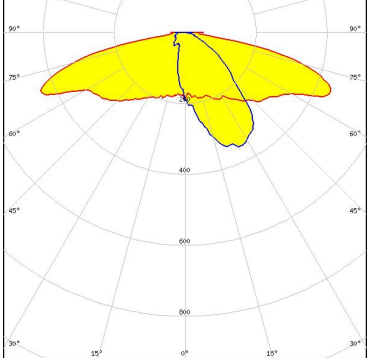
OPTICAL RESULTS (MEASURED):



LED	LUXEON M/MX
FWHM / FWTM	Asymmetric
Efficiency	92 %
Peak intensity	0.7 cd/lm
LEDs/each optic	1
Light colour	White
Required components:	



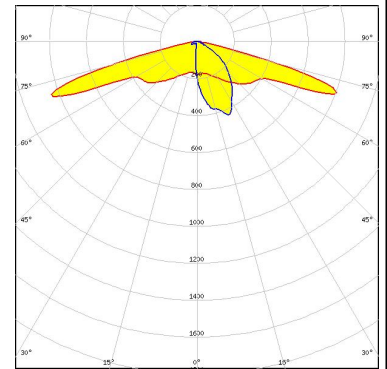
OPTICAL RESULTS (SIMULATED):

<p>CREE LEDs</p> <p>LED: XHP50 FWHM / FWTM: Asymmetric Efficiency: 92 % Peak intensity: 0.7 cd/lm LEDs/each optic: 1 Light colour: White Required components:</p>	
<p>CREE LEDs</p> <p>LED: XHP70 FWHM / FWTM: Asymmetric Efficiency: 92 % Peak intensity: 0.6 cd/lm LEDs/each optic: 1 Light colour: White Required components:</p>	
<p>CREE LEDs</p> <p>LED: XHP70 FWHM / FWTM: Asymmetric Efficiency: 79 % Peak intensity: 0.5 cd/lm LEDs/each optic: 1 Light colour: White Required components:</p> <p style="background-color: #e0f0ff; padding: 2px;">Protective plate, glass</p>	
<p>CREE LEDs</p> <p>LED: XHP70.2 FWHM / FWTM: Asymmetric Efficiency: 89 % Peak intensity: 0.6 cd/lm LEDs/each optic: 1 Light colour: White Required components:</p>	

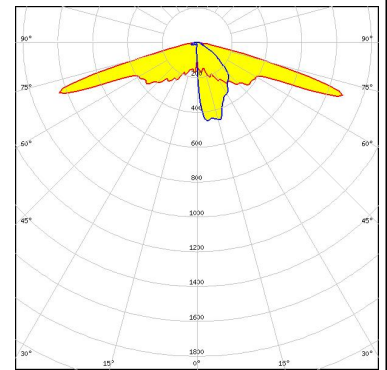
OPTICAL RESULTS (SIMULATED):



LED XM-L2
 FWHM / FWTM Asymmetric
 Efficiency 91 %
 Peak intensity 1.1 cd/lm
 LEDs/each optic 1
 Light colour White
 Required components:

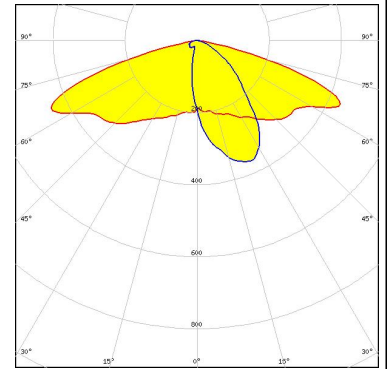


LED XP-E2
 FWHM / FWTM Asymmetric
 Efficiency 91 %
 Peak intensity 1.1 cd/lm
 LEDs/each optic 1
 Light colour White
 Required components:



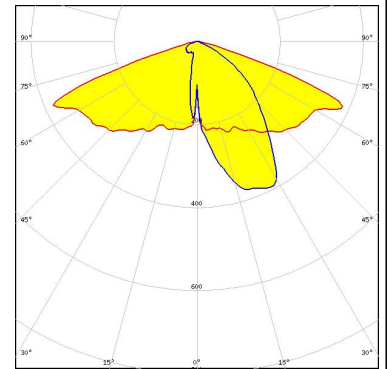
LED LUXEON 7070
 FWHM / FWTM Asymmetric
 Efficiency 78 %
 Peak intensity 0.5 cd/lm
 LEDs/each optic 1
 Light colour White
 Required components:

Protective plate, glass



LED LUXEON M/MX
 FWHM / FWTM Asymmetric
 Efficiency 76 %
 Peak intensity 0.5 cd/lm
 LEDs/each optic 1
 Light colour White
 Required components:

Protective plate, glass



OPTICAL RESULTS (SIMULATED):

		
LED	NVSW219F	
FWHM / FWTM	Asymmetric	
Efficiency	92 %	
Peak intensity	1.1 cd/lm	
LEDs/each optic	1	
Light colour	White	
Required components:		
		
LED	Duris S8	
FWHM / FWTM	Asymmetric	
Efficiency	91 %	
Peak intensity	1.1 cd/lm	
LEDs/each optic	1	
Light colour	White	
Required components:		