

GABRIELLA-MIDI-S

~10° spot beam with holder and installation tape

SPECIFICATION:

Dimensions	Ø 37.8 mm
Height	24.1 mm
Fastening	tape, pin
ROHS compliant	yes ⓘ

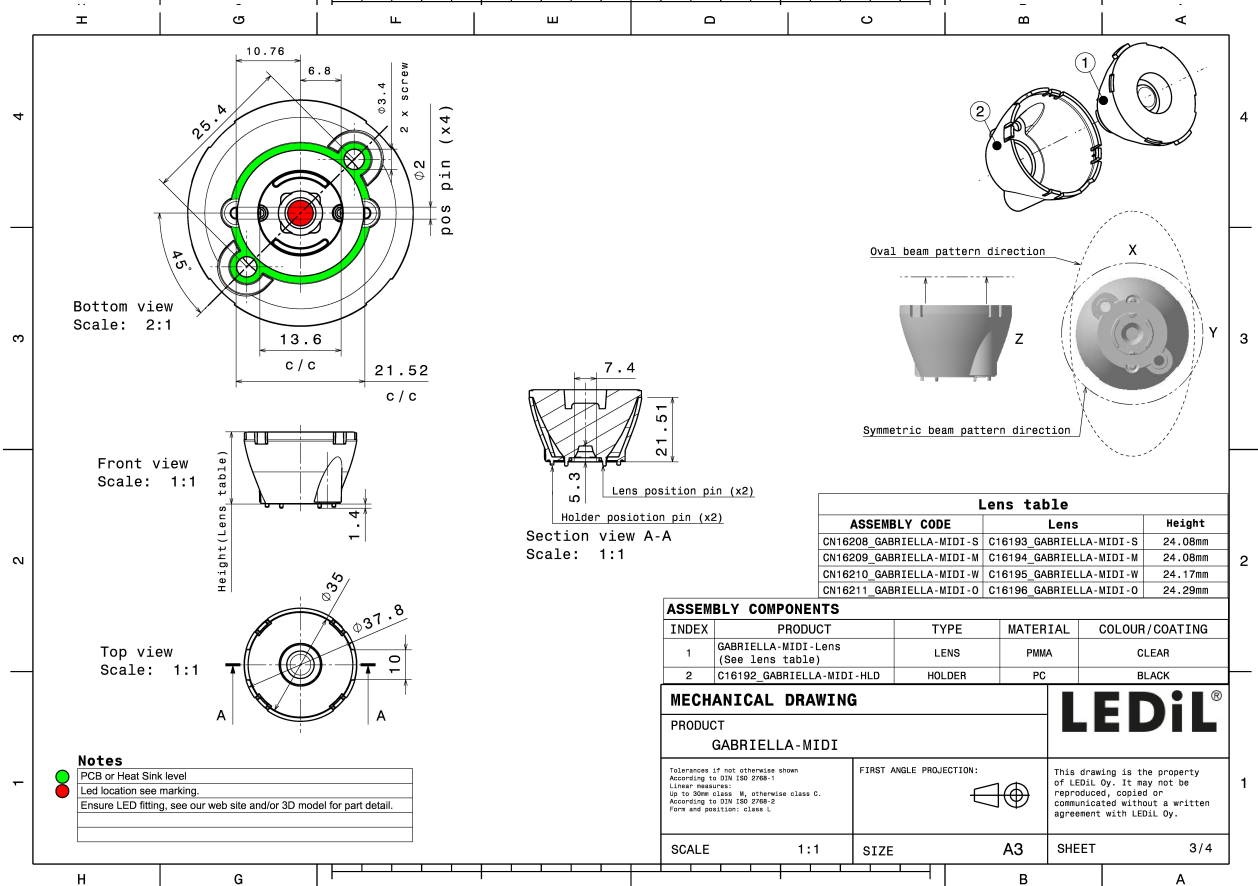
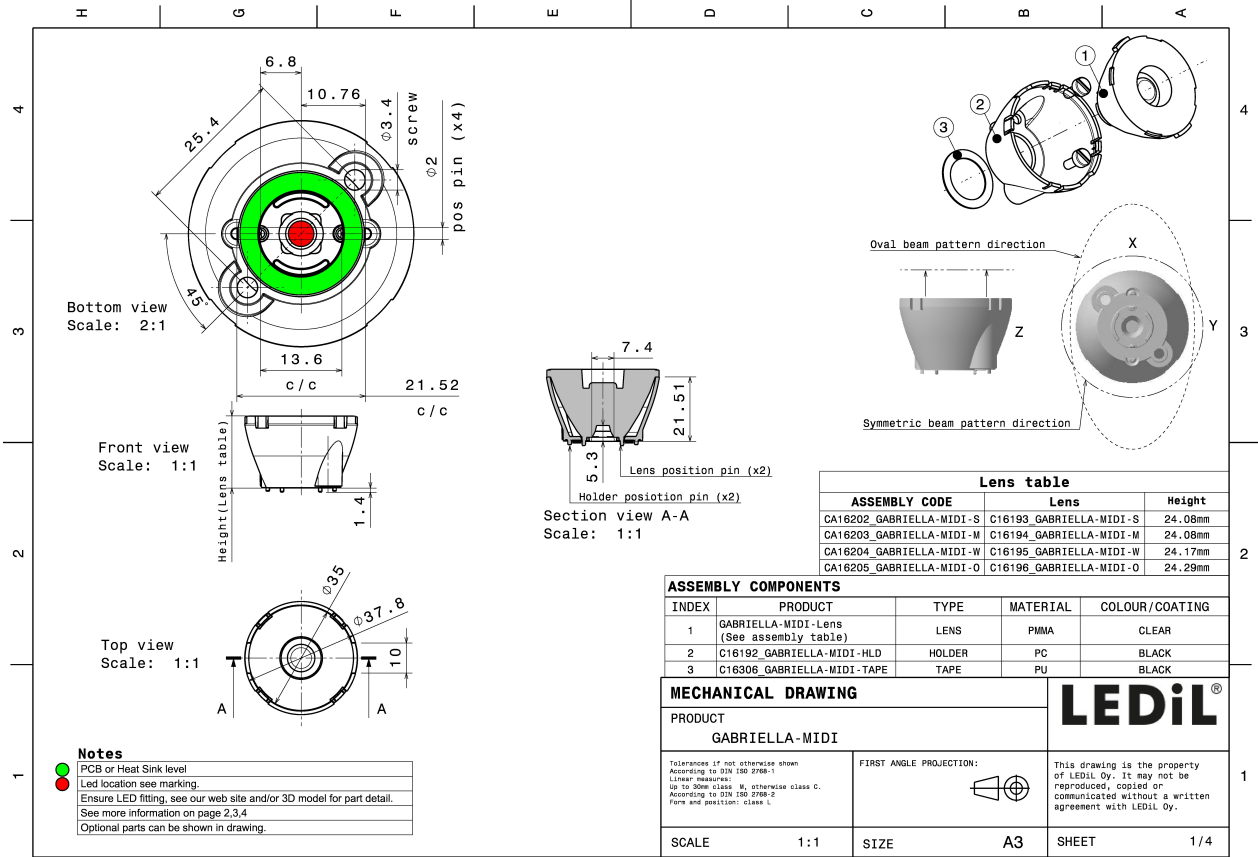
MATERIALS:

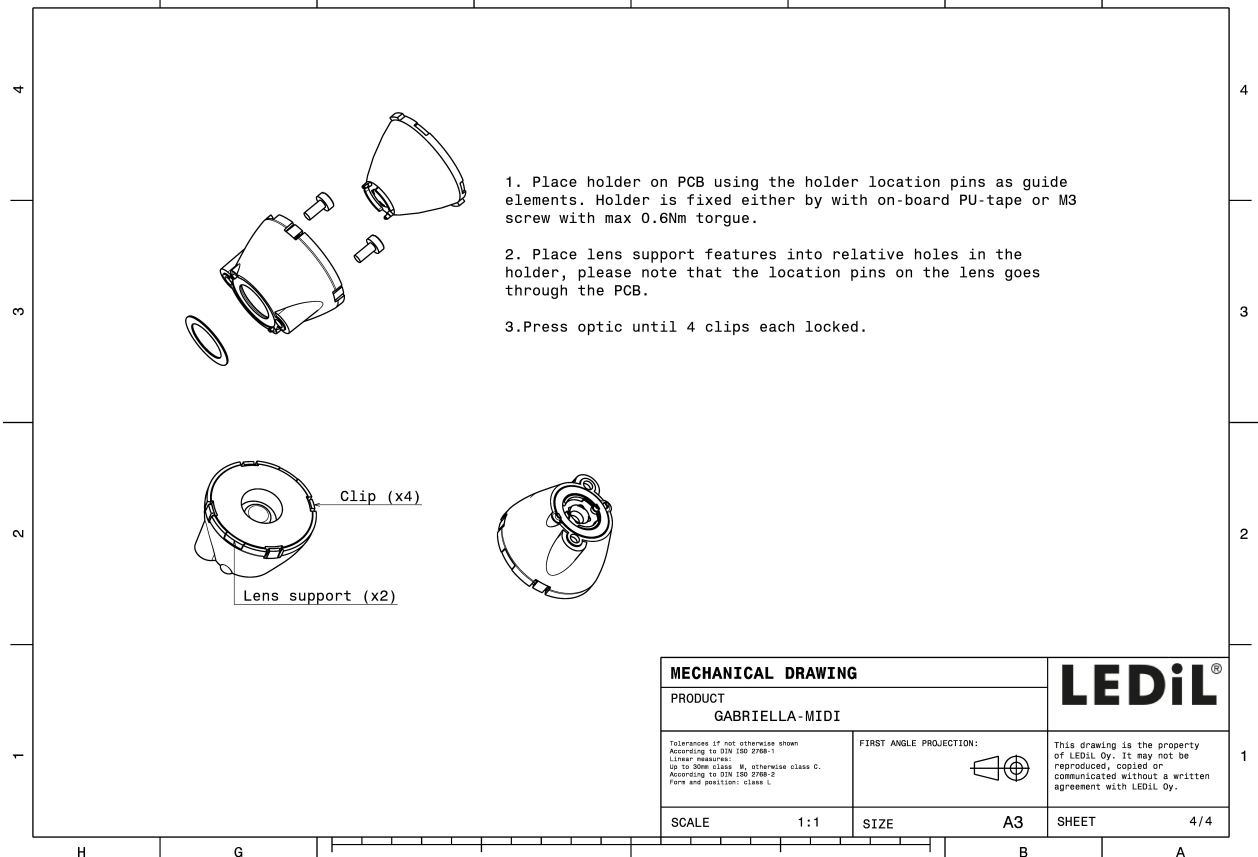
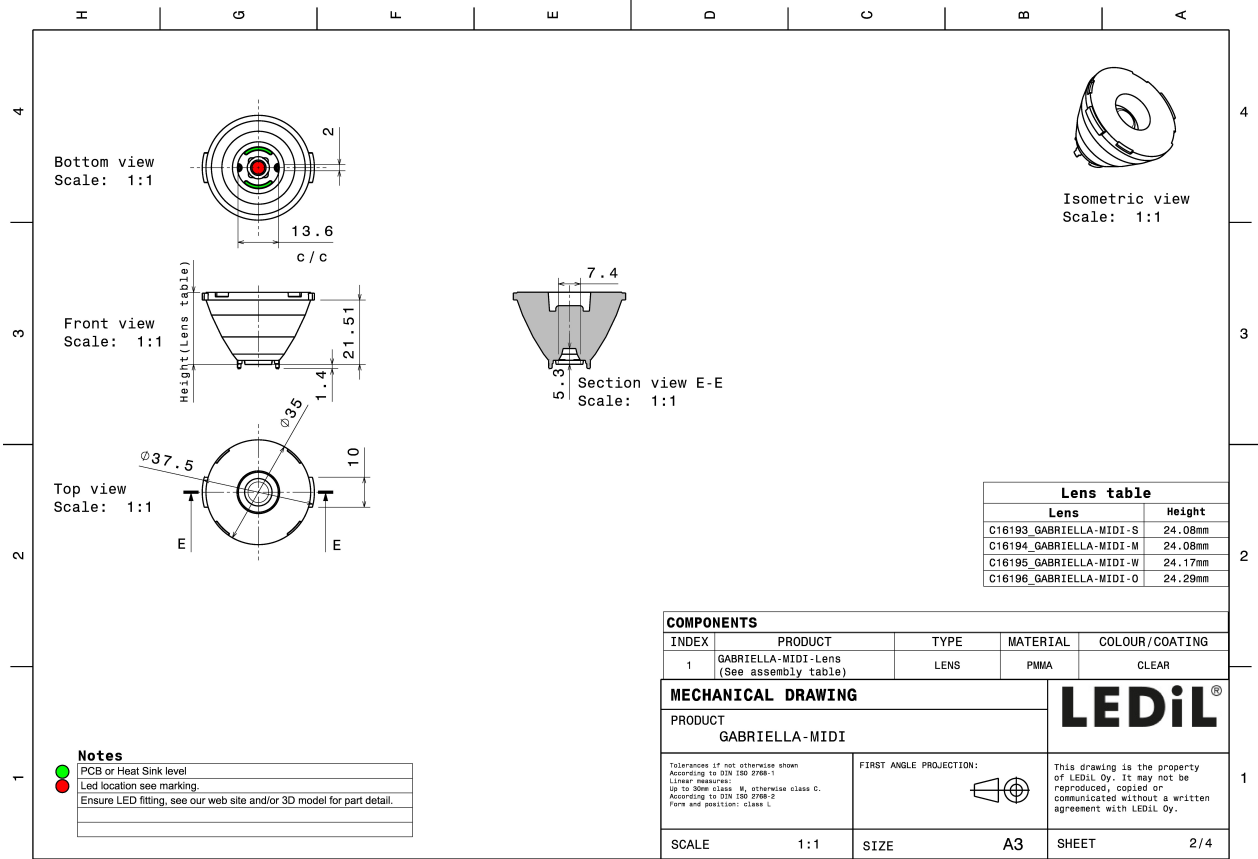
Component	Type	Material	Colour	Finish
GABRIELLA-MIDI-S	Single lens	PMMA	clear	
GABRIELLA-MIDI-HLD	Holder	PC	black	
GABRIELLA-MIDI-TAPE	Tape	Acrylic foam	black	



ORDERING INFORMATION:

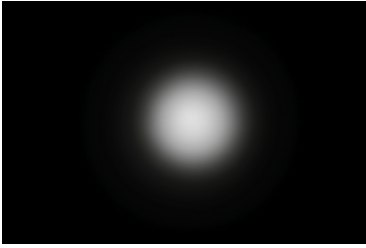
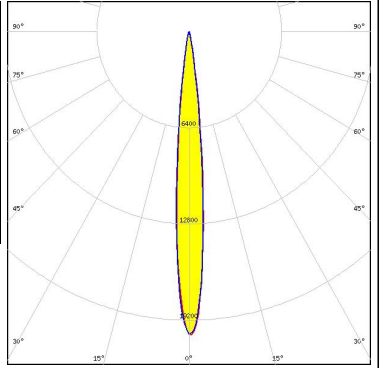
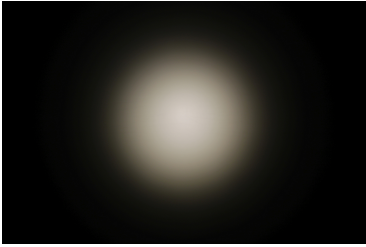
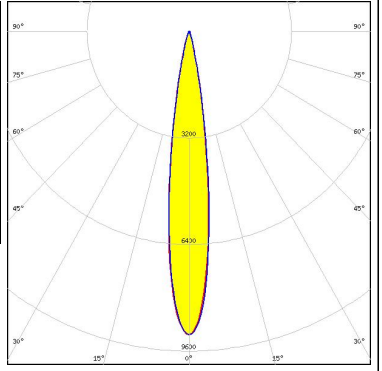

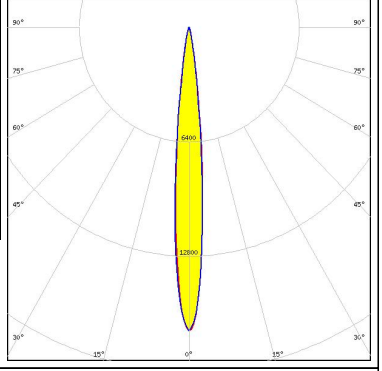

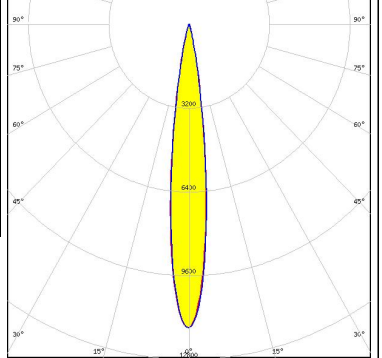
Component	Type	Qty in box	MOQ	MPQ	Box weight (kg)
CA16202_GABRIELLA-MIDI-S	Single lens	500	100	50	11.7
» Box size: 476 x 273 x 292 mm					





See also our general installation guide: www.ledil.com/installation_guide

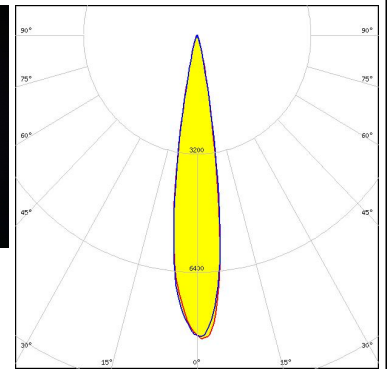
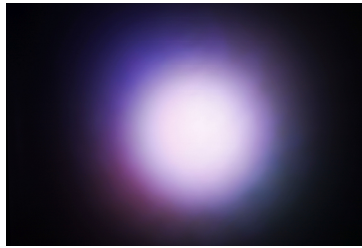
OPTICAL RESULTS (MEASURED):

<p>CREE LEDs</p> <p>LED XHP35 HI FWHM / FWTM 10.0° / 19.0° Efficiency 90 % Peak intensity 20.4 cd/lm LEDs/each optic 1 Light colour White Required components:</p>		
<p>CREE LEDs</p> <p>LED XHP50.2 FWHM / FWTM 15.0° / 28.0° Efficiency 87 % Peak intensity 9.1 cd/lm LEDs/each optic 1 Light colour White Required components:</p>		
<p>CREE LEDs</p> <p>LED XM-L RGBW (XMLDCL HI) FWHM / FWTM 11.0° / 20.0° Efficiency 89 % Peak intensity 17 cd/lm LEDs/each optic 1 Light colour RGBW Required components:</p>		
<p>LUMILEDS</p> <p>LED LUXEON 5050 Round LES FWHM / FWTM 14.0° / 26.0° Efficiency 91 % Peak intensity 12.6 cd/lm LEDs/each optic 1 Light colour White Required components:</p>		

OPTICAL RESULTS (MEASURED):

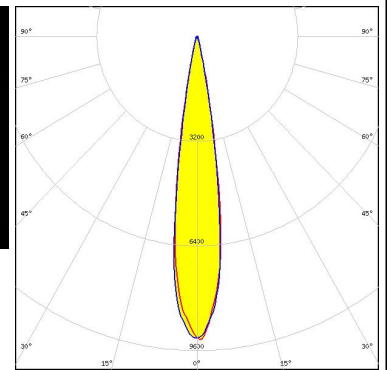
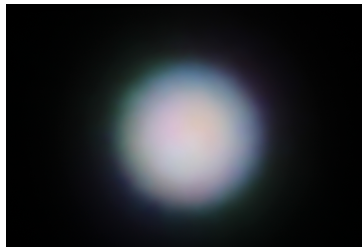
LUMILEDS

LED LUXEON C
 FWHM / FWTM 17.0° / 28.0°
 Efficiency 85 %
 Peak intensity 8.2 cd/lm
 LEDs/each optic 1
 Light colour RGBW
 Required components:



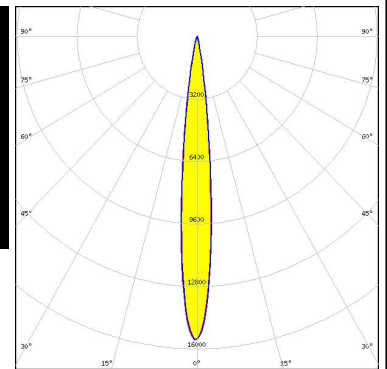
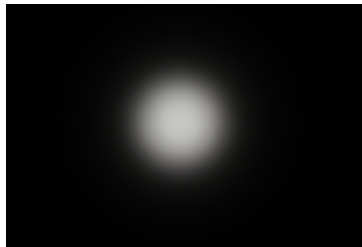
LUMILEDS

LED LUXEON CZ
 FWHM / FWTM 16.0° / 26.0°
 Efficiency 89 %
 Peak intensity 9.3 cd/lm
 LEDs/each optic 4
 Light colour RGBW
 Required components:



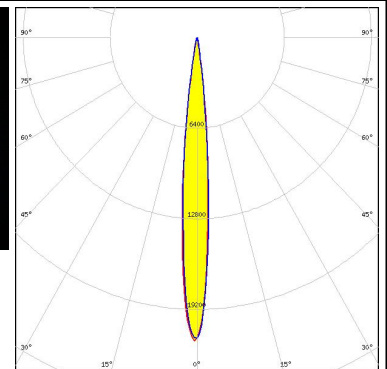
LUMILEDS

LED LUXEON V
 FWHM / FWTM 11.0° / 22.0°
 Efficiency 89 %
 Peak intensity 15.5 cd/lm
 LEDs/each optic 1
 Light colour White
 Required components:



LUMINUS

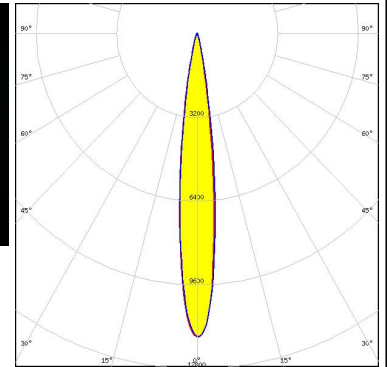
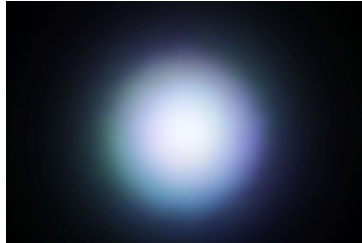
LED SBM-40-RGBW
 FWHM / FWTM 10.0° / 19.0°
 Efficiency 89 %
 Peak intensity 21.5 cd/lm
 LEDs/each optic 1
 Light colour White
 Required components:



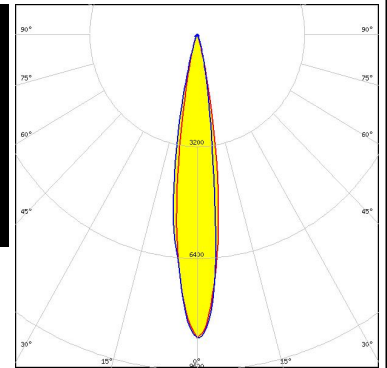
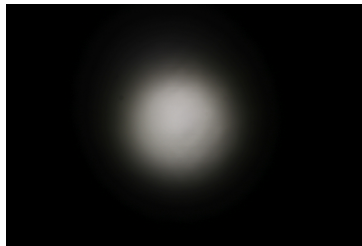
OPTICAL RESULTS (MEASURED):



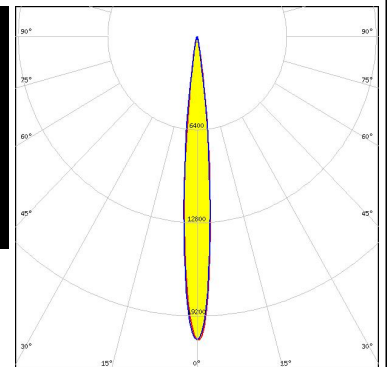
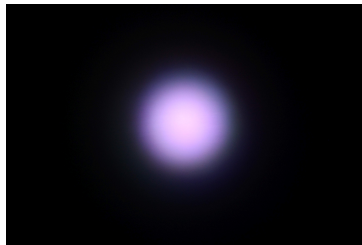
LED NCSxE17A
 FWHM / FWTM 13.0° / 26.0°
 Efficiency 92 %
 Peak intensity 11.6 cd/lm
 LEDs/each optic 4
 Light colour RGBW
 Required components:



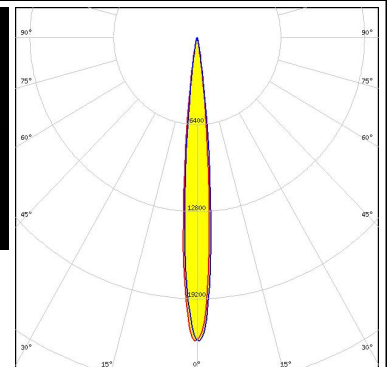
LED NVSW219F
 FWHM / FWTM 16.0° / 29.0°
 Efficiency 89 %
 Peak intensity 8.7 cd/lm
 LEDs/each optic 1
 Light colour White
 Required components:





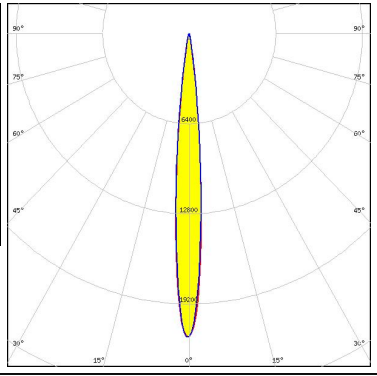


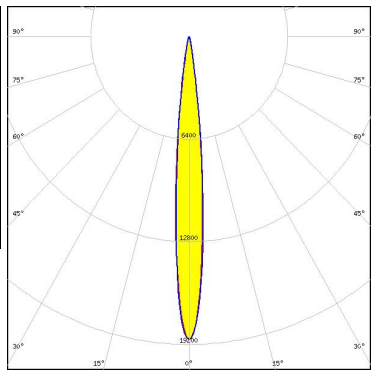


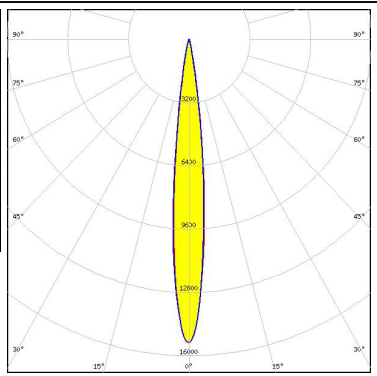
LED OSTAR Stage (S2WN)
 FWHM / FWTM 10.0° / 19.0°
 Efficiency 90 %
 Peak intensity 20.8 cd/lm
 LEDs/each optic 1
 Light colour RGBW
 Required components:



LED OSTAR Stage (S2WP)
 FWHM / FWTM 10.0° / 18.0°
 Efficiency 91 %
 Peak intensity 22 cd/lm
 LEDs/each optic 1
 Light colour White
 Required components:



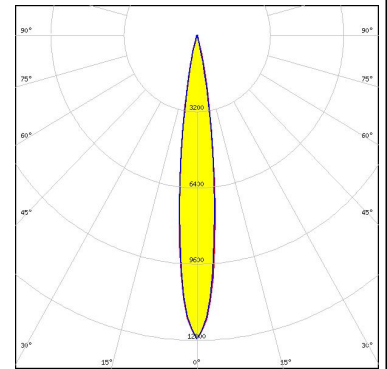
OPTICAL RESULTS (MEASURED):

<p> SEUL SEMICONDUCTOR</p> <p>LED SPF05F0A</p> <p>FWHM / FWTM 10.0° / 19.0°</p> <p>Efficiency 89 %</p> <p>Peak intensity 21.6 cd/lm</p> <p>LEDs/each optic 1</p> <p>Light colour RGBW</p> <p>Required components:</p>		
<p> SEUL SEMICONDUCTOR</p> <p>LED SPF05F0B</p> <p>FWHM / FWTM 11.0° / 20.0°</p> <p>Efficiency 90 %</p> <p>Peak intensity 18.9 cd/lm</p> <p>LEDs/each optic 1</p> <p>Light colour RGBW</p> <p>Required components:</p>		
<p> SEUL SEMICONDUCTOR</p> <p>LED SPF05F0C</p> <p>FWHM / FWTM 12.0° / 22.0°</p> <p>Efficiency 89 %</p> <p>Peak intensity 15.4 cd/lm</p> <p>LEDs/each optic 1</p> <p>Light colour RGBW</p> <p>Required components:</p>		

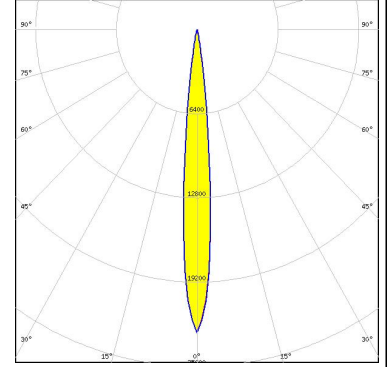
OPTICAL RESULTS (SIMULATED):



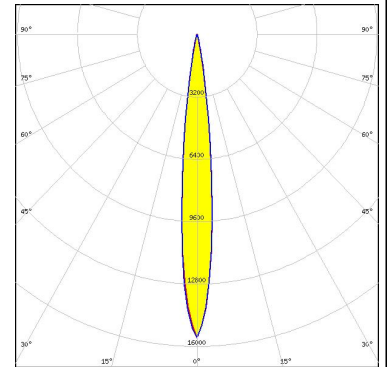
LED CLQ6A-TKW
 FWHM / FWTM 13.7° / 26.1°
 Efficiency 94 %
 Peak intensity 12.7 cd/lm
 LEDs/each optic 1
 Light colour RGBW
 Required components:



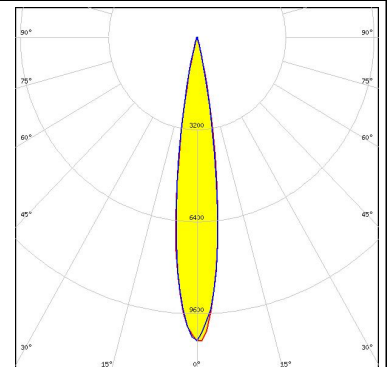
LED XE-G
 FWHM / FWTM 10.0° / 18.0°
 Efficiency 92 %
 Peak intensity 23.1 cd/lm
 LEDs/each optic 1
 Light colour White
 Required components:



LED XHP35.2 HD
 FWHM / FWTM 12.0° / 22.0°
 Efficiency 88 %
 Peak intensity 15.6 cd/lm
 LEDs/each optic 1
 Light colour White
 Required components:



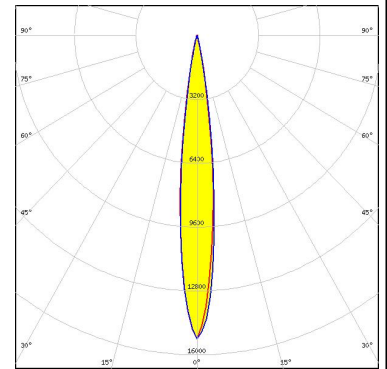
LED XHP50
 FWHM / FWTM 16.0° / 27.0°
 Efficiency 91 %
 Peak intensity 10.7 cd/lm
 LEDs/each optic 1
 Light colour White
 Required components:



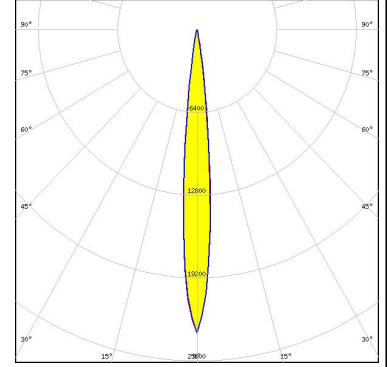
OPTICAL RESULTS (SIMULATED):



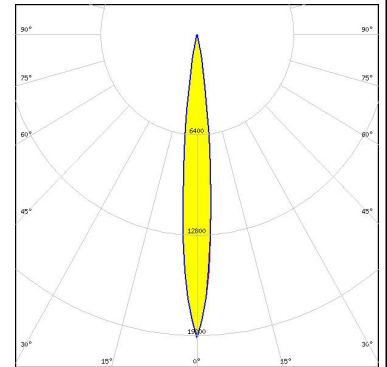
LED XM-L RGBW (XMLCTW)
 FWHM / FWTM 13.0° / 23.0°
 Efficiency 93 %
 Peak intensity 15.2 cd/lm
 LEDs/each optic 1
 Light colour RGBW
 Required components:



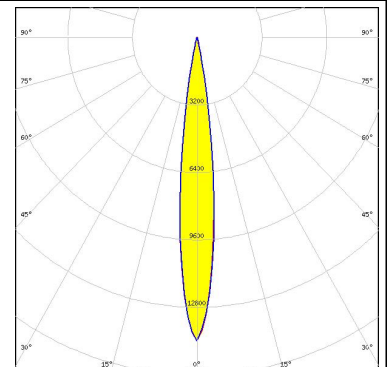
LED XP-E2
 FWHM / FWTM 10.0° / 19.0°
 Efficiency 92 %
 Peak intensity 23.5 cd/lm
 LEDs/each optic 1
 Light colour Amber
 Required components:



LED XP-G2 HE
 FWHM / FWTM 11.0° / 22.0°
 Efficiency 92 %
 Peak intensity 19.4 cd/lm
 LEDs/each optic 1
 Light colour White
 Required components:



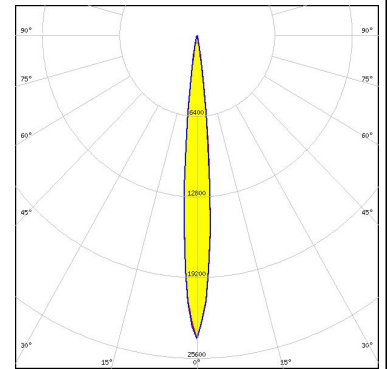
LED XQ-E HI
 FWHM / FWTM 14.0° / 24.0°
 Efficiency 90 %
 Peak intensity 14.4 cd/lm
 LEDs/each optic 4
 Light colour RGBW
 Required components:



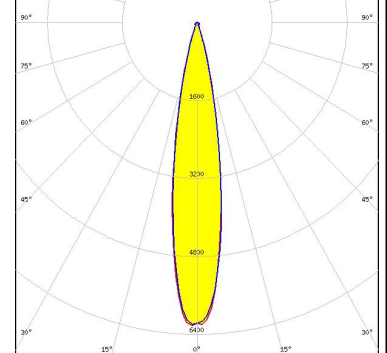
OPTICAL RESULTS (SIMULATED):



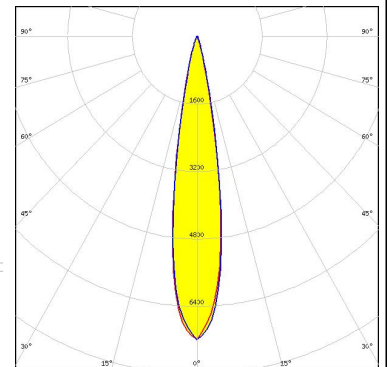
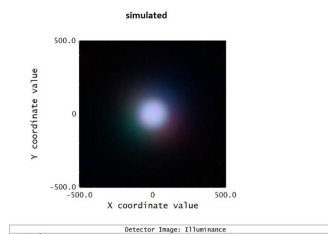
LED XT-E
 FWHM / FWTM 10.0° / 19.0°
 Efficiency 91 %
 Peak intensity 24.1 cd/lm
 LEDs/each optic 1
 Light colour White
 Required components:



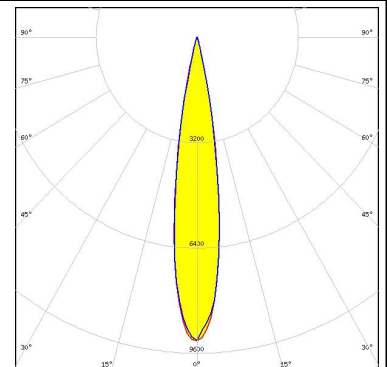
LED LUXEON 7070
 FWHM / FWTM 18.0° / 34.0°
 Efficiency 90 %
 Peak intensity 6.3 cd/lm
 LEDs/each optic 1
 Light colour White
 Required components:



LED LUXEON C
 FWHM / FWTM 18.0 + °
 Efficiency 86 %
 Peak intensity 7.2 cd/lm
 LEDs/each optic 4
 Light colour RGBW
 Required components:



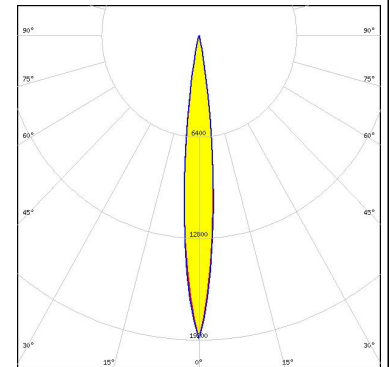
LED LUXEON M/MX
 FWHM / FWTM 17.0° / 28.0°
 Efficiency 91 %
 Peak intensity 9.3 cd/lm
 LEDs/each optic 1
 Light colour White
 Required components:



OPTICAL RESULTS (SIMULATED):

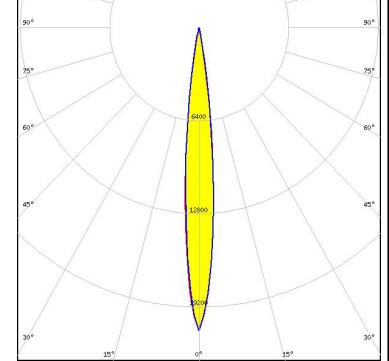
LUMILEDS

LED LUXEON Rubix
 FWHM / FWTM 12.0° / 21.0°
 Efficiency 92 %
 Peak intensity 19.1 cd/lm
 LEDs/each optic 4
 Light colour RGBW
 Required components:



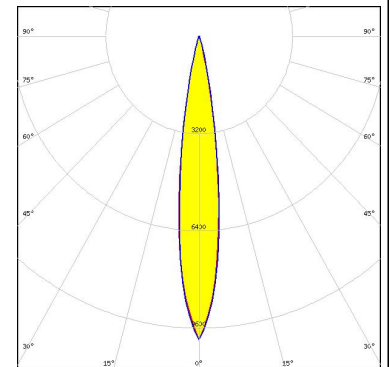
LUMILEDS

LED LUXEON Z
 FWHM / FWTM 11.0° / 20.0°
 Efficiency 91 %
 Peak intensity 21 cd/lm
 LEDs/each optic 4
 Light colour RGBW
 Required components:



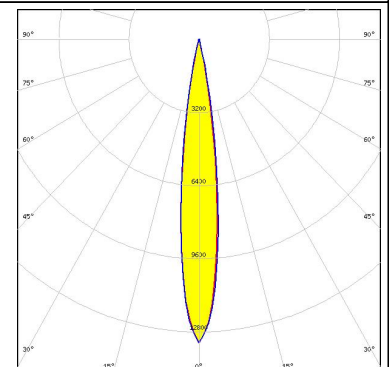
NICHIA

LED NV4x144A
 FWHM / FWTM 16.0° / 28.0°
 Efficiency 89 %
 Peak intensity 10 cd/lm
 LEDs/each optic 1
 Light colour White
 Required components:



OSRAM

Opto Semiconductors
 LED DURIS E 5050 (GW J9LHS1.4M)
 FWHM / FWTM 14.0° / 24.0 + 26.0°
 Efficiency 93 %
 Peak intensity 13.3 cd/lm
 LEDs/each optic 1
 Light colour RGBW
 Required components:

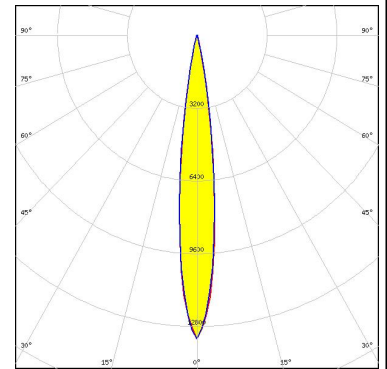


OPTICAL RESULTS (SIMULATED):

OSRAM

Opto Semiconductors

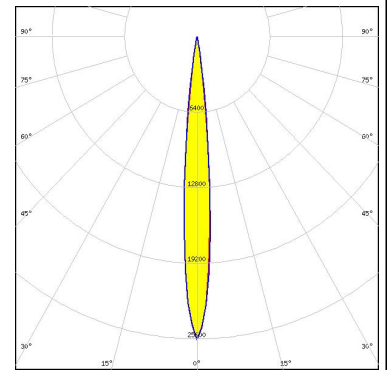
LED Duris S8
 FWHM / FWTM 14.0° / 25.0°
 Efficiency 92 %
 Peak intensity 13.5 cd/lm
 LEDs/each optic 1
 Light colour White
 Required components:



OSRAM

Opto Semiconductors

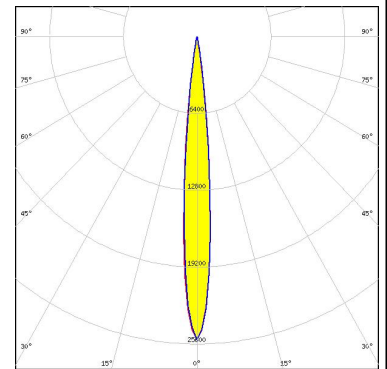
LED OSCONIQ P 3737 (2W version)
 FWHM / FWTM 10.0° / 19.0°
 Efficiency 94 %
 Peak intensity 25.7 cd/lm
 LEDs/each optic 1
 Light colour White
 Required components:



OSRAM

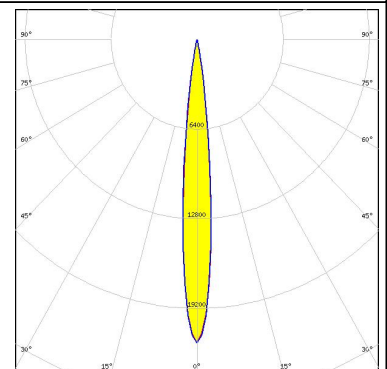
Opto Semiconductors

LED OSLON Square CSSRM2/CSSRM3
 FWHM / FWTM 10.0° / 19.0°
 Efficiency 93 %
 Peak intensity 25.3 cd/lm
 LEDs/each optic 1
 Light colour White
 Required components:



SAMSUNG

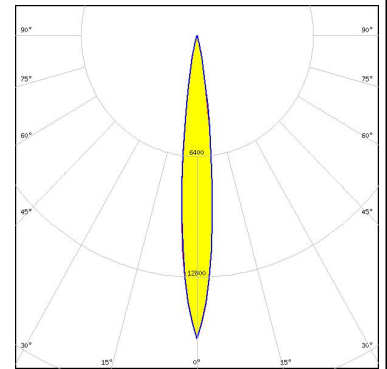
LED LH351B
 FWHM / FWTM 11.0° / 20.0°
 Efficiency 93 %
 Peak intensity 21.7 cd/lm
 LEDs/each optic 1
 Light colour White
 Required components:



OPTICAL RESULTS (SIMULATED):

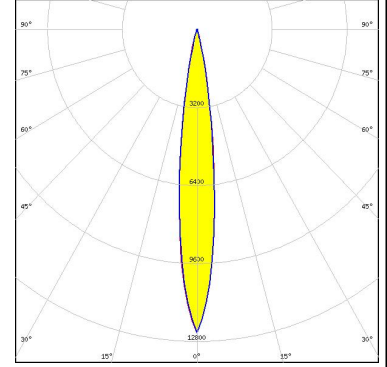
SAMSUNG

LED LH351D
 FWHM / FWTM 12.0° / 24.0°
 Efficiency 92 %
 Peak intensity 16.1 cd/lm
 LEDs/each optic 1
 Light colour White
 Required components:



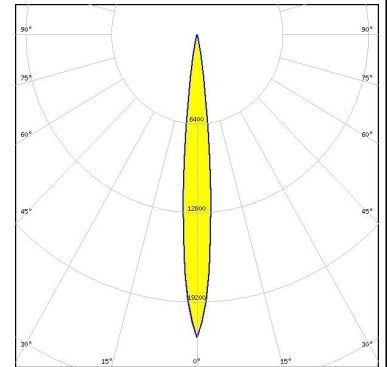
SAMSUNG

LED LH502D
 FWHM / FWTM 14.0° / 26.0°
 Efficiency 92 %
 Peak intensity 12.4 cd/lm
 LEDs/each optic 1
 Light colour White
 Required components:



SAMSUNG

LED LM28xB Series
 FWHM / FWTM 10.0° / 20.0°
 Efficiency 93 %
 Peak intensity 21.8 cd/lm
 LEDs/each optic 1
 Light colour White
 Required components:



SEOUL SEMICONDUCTOR

LED Z5M1/Z5M2
 FWHM / FWTM 10.0° / 19.0°
 Efficiency 93 %
 Peak intensity 25.8 cd/lm
 LEDs/each optic 1
 Light colour White
 Required components:

