

GABRIELLA-MIDI-M

~25° spot beam with holder and installation tape

TECHNICAL SPECIFICATIONS:

Dimensions	Ø 37.8 mm
Height	24.1 mm
Fastening	tape, pin
ROHS compliant	yes ⓘ

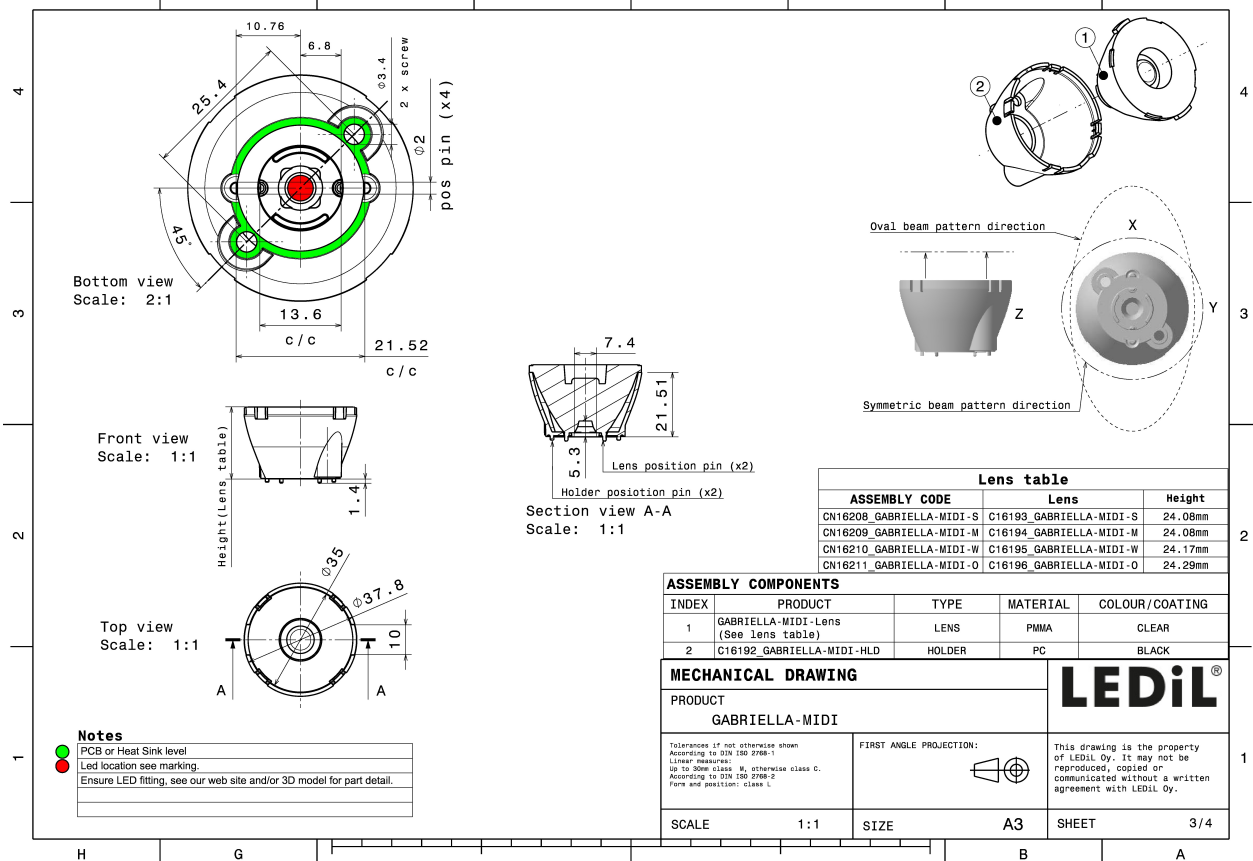
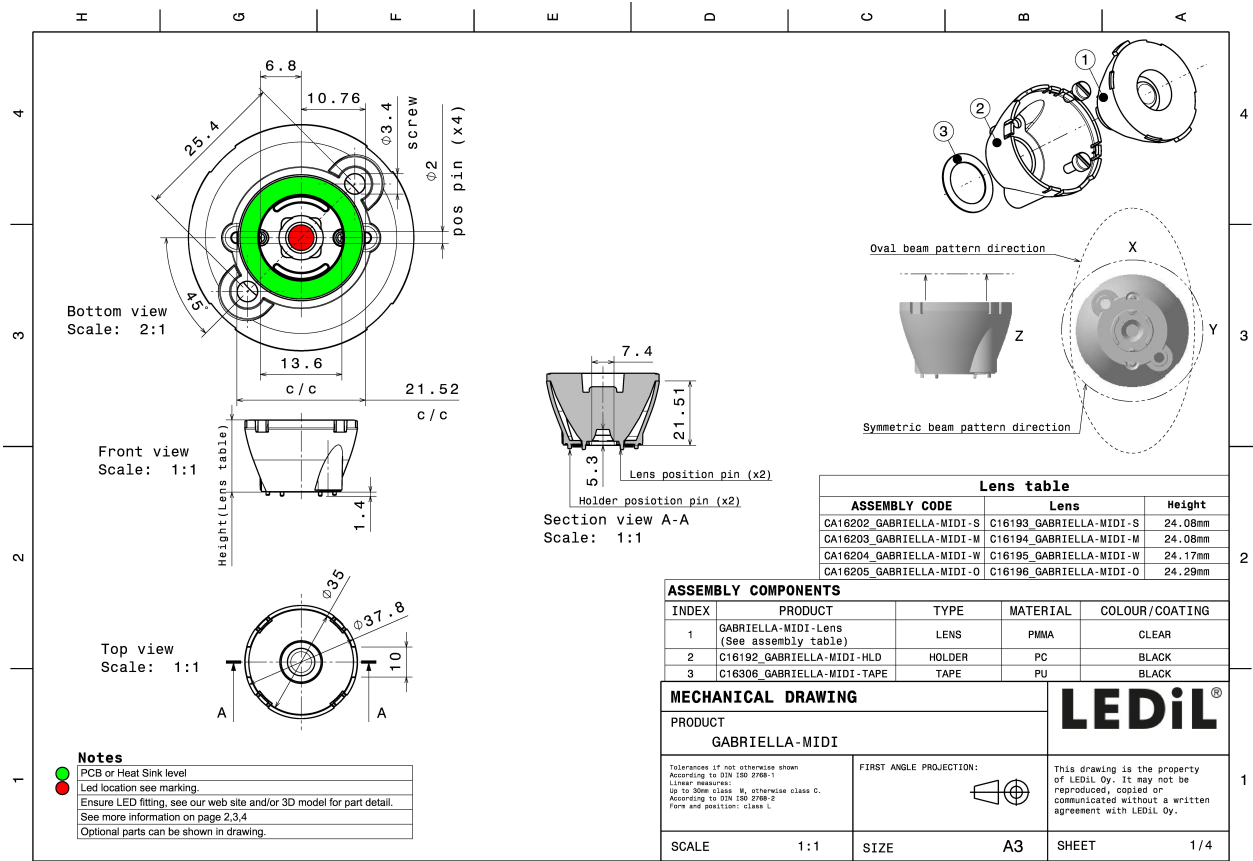
MATERIAL SPECIFICATIONS:

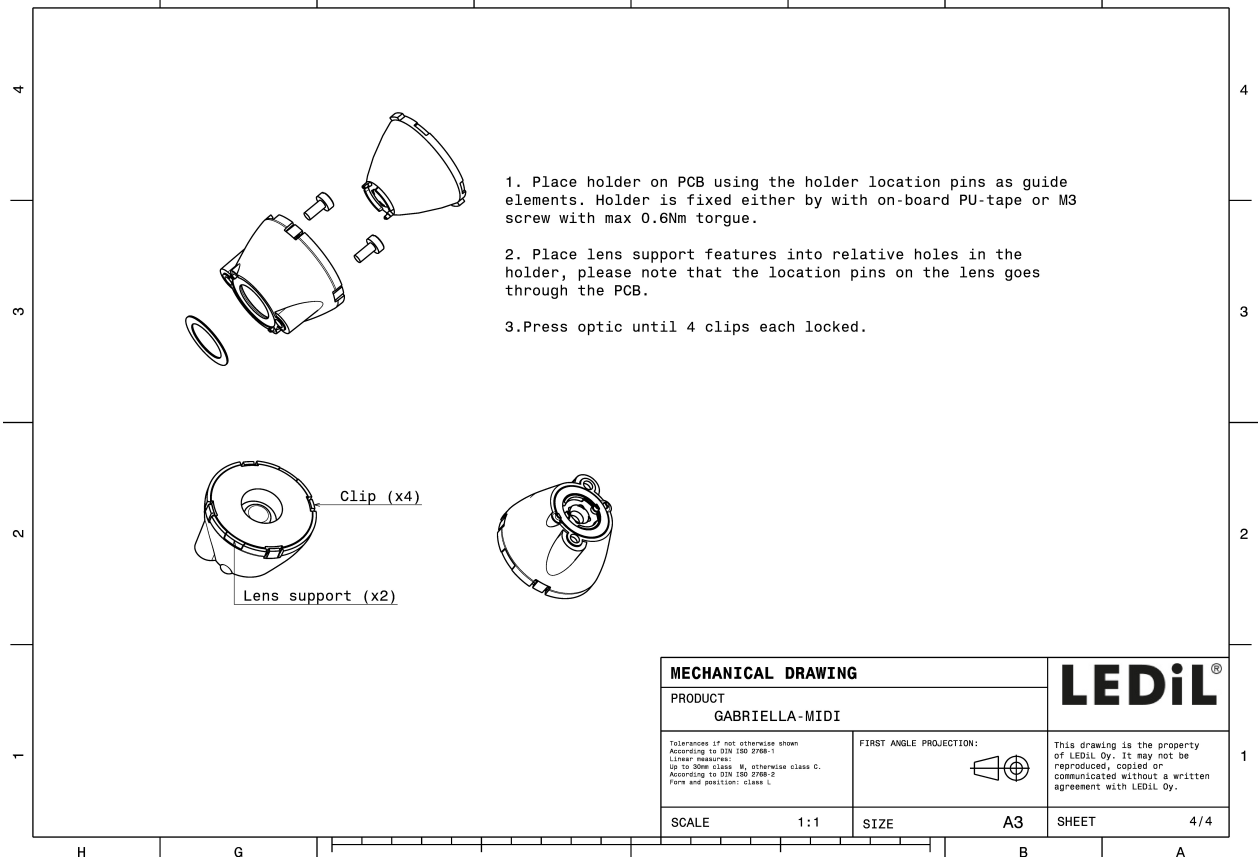
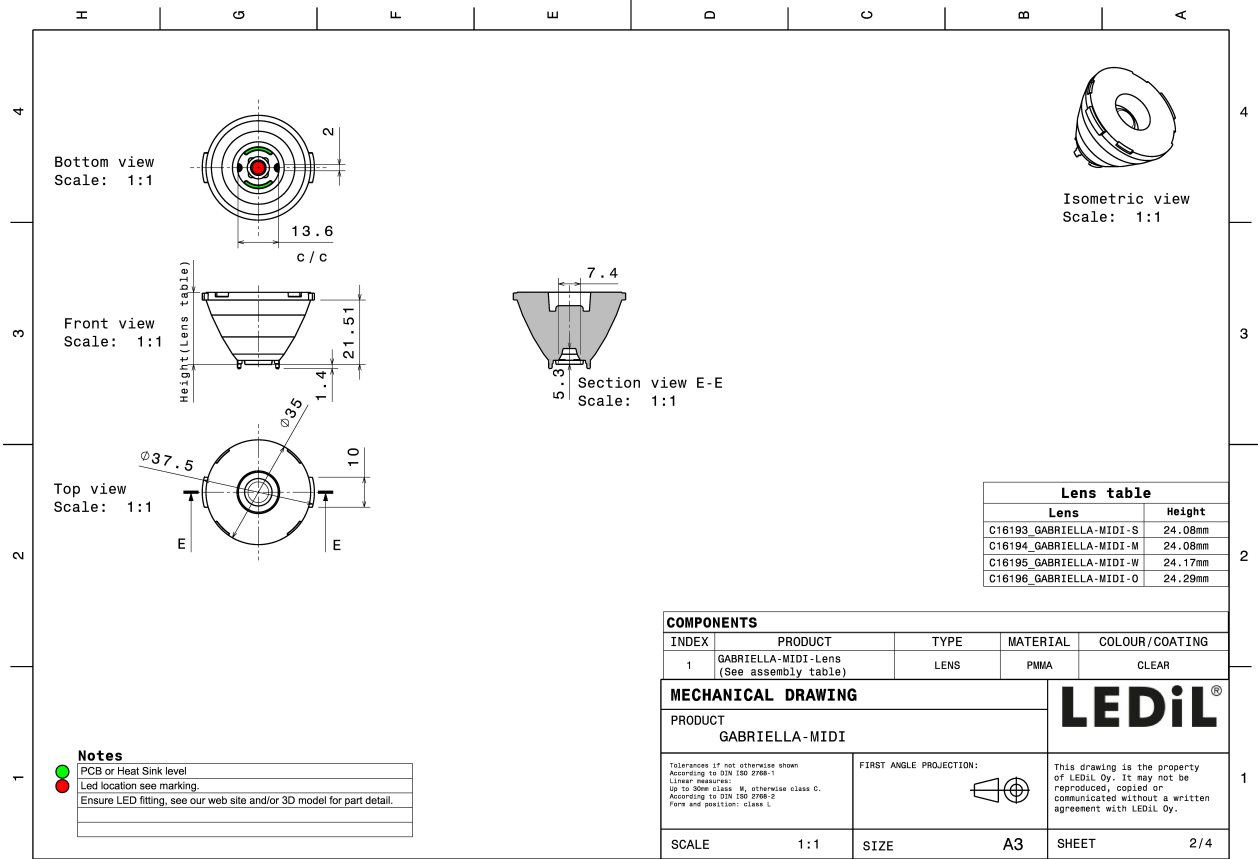
Component	Type	Material	Colour	Finish
GABRIELLA-MIDI-M	Single lens	PMMA	clear	
GABRIELLA-MIDI-HLD	Assembly	PC	black	

ORDERING INFORMATION:

Component		Qty in box	MOQ	MPQ	Box weight (kg)
CA16203_GABRIELLA-MIDI-M	Single lens	500	100	50	11.5
» Box size: 476 x 273 x 292 mm					





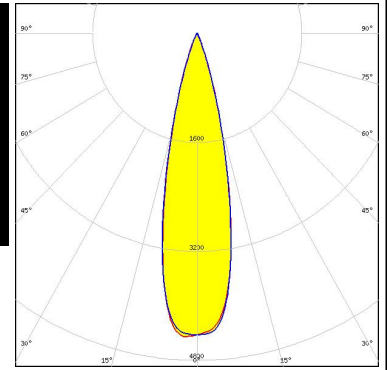


See also our general installation guide: www.ledil.com/installation_guide

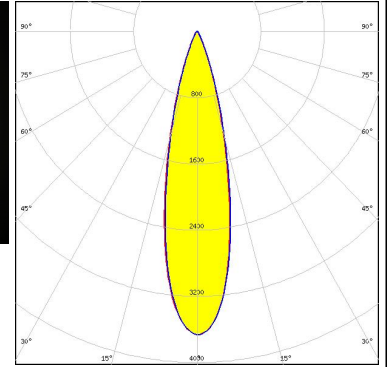
PHOTOMETRIC DATA (MEASURED):



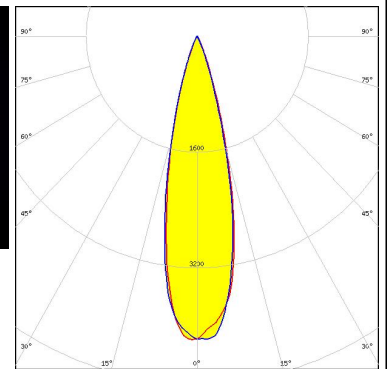
LED XHP35 HI
 FWHM / FWTM 25.0° / 41.0°
 Efficiency 89 %
 Peak intensity 4.5 cd/m
 LEDs/each optic 1
 Light colour White
 Required components:



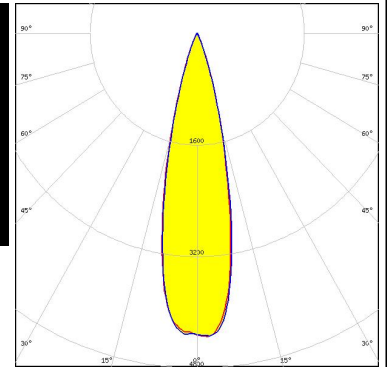
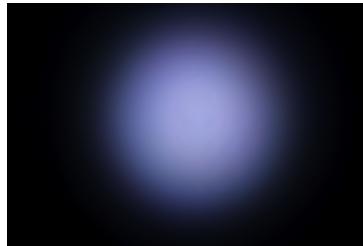
LED XHP50.2
 FWHM / FWTM 25.0° / 45.0°
 Efficiency 85 %
 Peak intensity 3.7 cd/m
 LEDs/each optic 1
 Light colour White
 Required components:





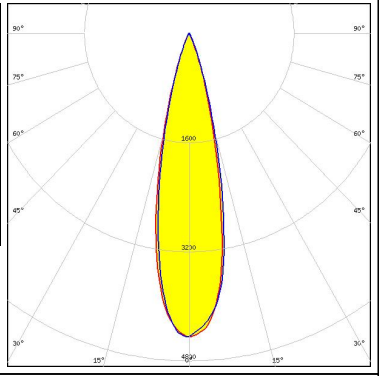


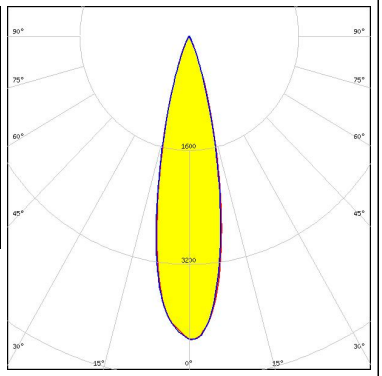
LED OSTAR Stage (S2WP)
 FWHM / FWTM 25.0° / 42.0°
 Efficiency 88 %
 Peak intensity 4.2 cd/m
 LEDs/each optic 1
 Light colour White
 Required components:



LED SPF05F0A
 FWHM / FWTM 25.0° / 41.0°
 Efficiency 88 %
 Peak intensity 4.4 cd/m
 LEDs/each optic 1
 Light colour RGBW
 Required components:



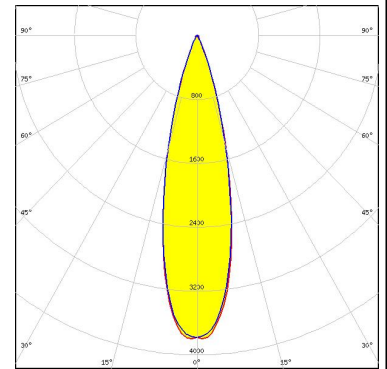
PHOTOMETRIC DATA (MEASURED):

<p> SEIOUL SEMICONDUCTOR</p> <p>LED SPF05F0B</p> <p>FWHM / FWTM 25.0° / 42.0°</p> <p>Efficiency 88 %</p> <p>Peak intensity 4.4 cd/lm</p> <p>LEDs/each optic 1</p> <p>Light colour RGBW</p> <p>Required components:</p>		
<p> SEIOUL SEMICONDUCTOR</p> <p>LED SPF05F0C</p> <p>FWHM / FWTM 24.0° / 42.0°</p> <p>Efficiency 87 %</p> <p>Peak intensity 4.3 cd/lm</p> <p>LEDs/each optic 1</p> <p>Light colour RGBW</p> <p>Required components:</p>		

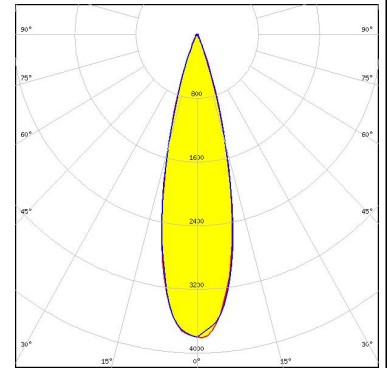
PHOTOMETRIC DATA (SIMULATED):



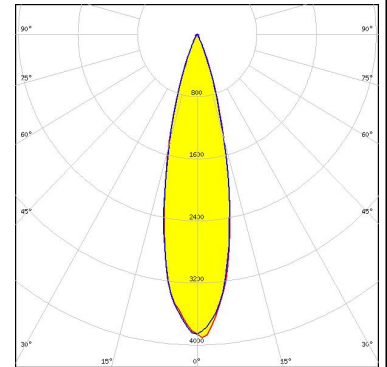
LED J Series 5050 Round LES
 FWHM / FWTM 26.0° / 44.0°
 Efficiency 88 %
 Peak intensity 3.8 cd/lm
 LEDs/each optic 1
 Light colour White
 Required components:



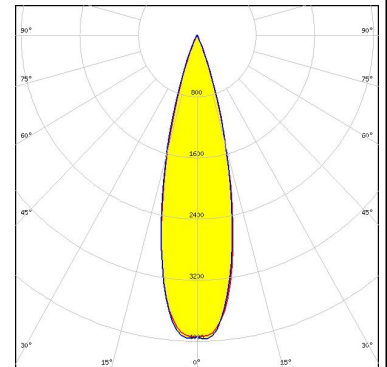
LED XHP35.2
 FWHM / FWTM 26.0° / 44.0°
 Efficiency 85 %
 Peak intensity 3.8 cd/lm
 LEDs/each optic 1
 Light colour White
 Required components:



LED XHP50
 FWHM / FWTM 26.0° / 44.0°
 Efficiency 87 %
 Peak intensity 4 cd/lm
 LEDs/each optic 1
 Light colour White
 Required components:



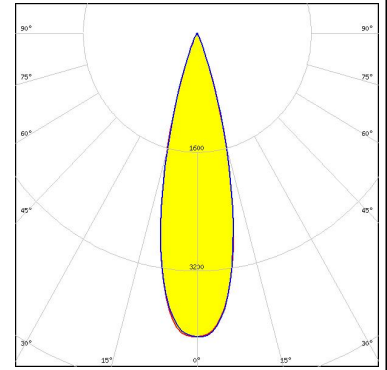
LED XM-L RGB
 FWHM / FWTM 26.0° / 44.0°
 Efficiency 88 %
 Peak intensity 4 cd/lm
 LEDs/each optic 1
 Light colour White
 Required components:



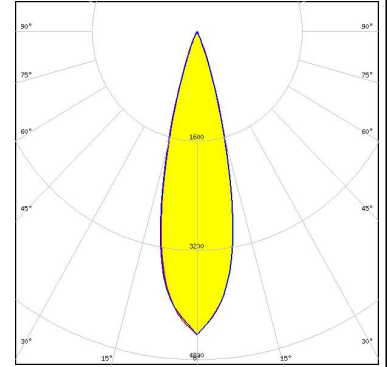
PHOTOMETRIC DATA (SIMULATED):



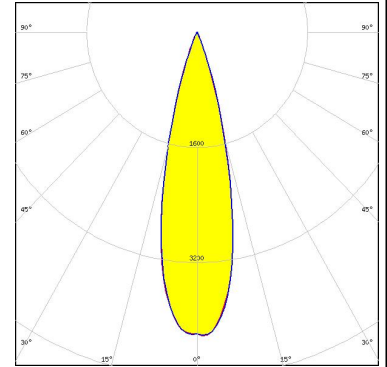
LED XM-L2
 FWHM / FWTM 27.0° / 43.0°
 Efficiency 88 %
 Peak intensity 4.1 cd/lm
 LEDs/each optic 1
 Light colour White
 Required components:



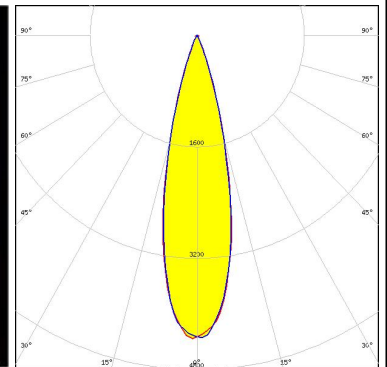
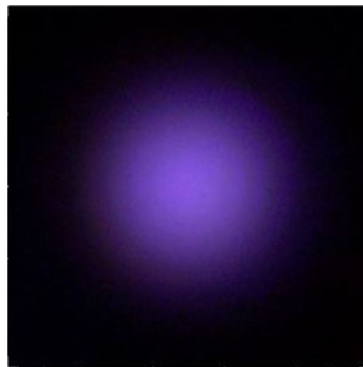
LED XP-G2
 FWHM / FWTM 26.0° / 42.0°
 Efficiency 89 %
 Peak intensity 4.4 cd/lm
 LEDs/each optic 1
 Light colour White
 Required components:



LED XP-G2 HE
 FWHM / FWTM 26.0° / 42.0°
 Efficiency 88 %
 Peak intensity 4.3 cd/lm
 LEDs/each optic 1
 Light colour White
 Required components:



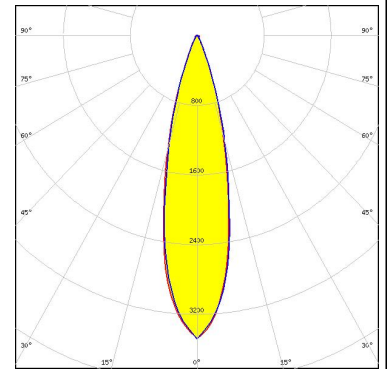
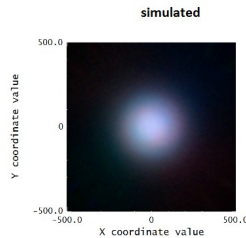
LED LZ7 Plus (LZ7-04M2PD)
 FWHM / FWTM 25.0° / 42.0°
 Efficiency 90 %
 Peak intensity 4.4 cd/lm
 LEDs/each optic 1
 Light colour White
 Required components:



PHOTOMETRIC DATA (SIMULATED):

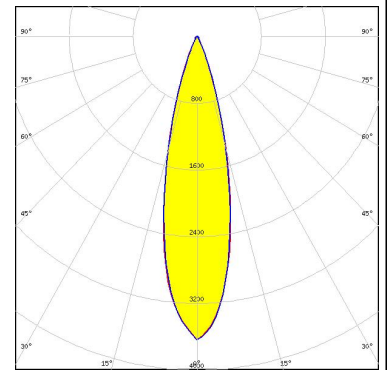
LUMILEDS

LED LUXEON C
 FWHM / FWTM 24.0 + °
 Efficiency 83 %
 Peak intensity 3.5 cd/lm
 LEDs/each optic 4
 Light colour RGBW
 Required components:



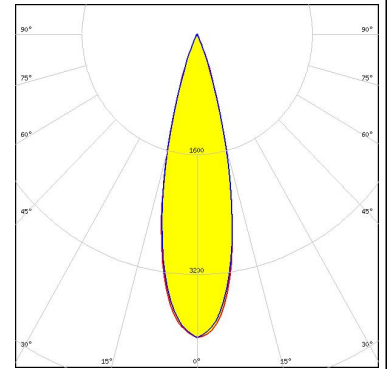
LUMILEDS

LED LUXEON M/MX
 FWHM / FWTM 25.0° / 46.0°
 Efficiency 86 %
 Peak intensity 3.6 cd/lm
 LEDs/each optic 1
 Light colour White
 Required components:



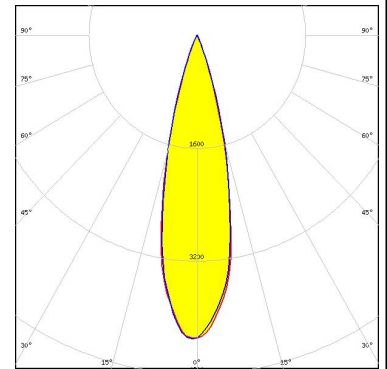
LUMILEDS

LED LUXEON MZ
 FWHM / FWTM 26.0° / 43.0°
 Efficiency 88 %
 Peak intensity 4 cd/lm
 LEDs/each optic 1
 Light colour White
 Required components:



LUMILEDS

LED LUXEON Rubix (white)
 FWHM / FWTM 26.0° / 42.0°
 Efficiency 89 %
 Peak intensity 4.3 cd/lm
 LEDs/each optic 4
 Light colour RGBW
 Required components:



PHOTOMETRIC DATA (SIMULATED):

<p>NICHIA</p> <p>LED NV4x144A FWHM / FWTM 26.0° / 44.0° Efficiency 86 % Peak intensity 3.8 cd/lm LEDs/each optic 1 Light colour White Required components:</p>	
<p>OSRAM Opto Semiconductors</p> <p>LED Duris S8 FWHM / FWTM 27.0° / 45.0° Efficiency 87 % Peak intensity 3.7 cd/lm LEDs/each optic 1 Light colour White Required components:</p>	
<p>OSRAM Opto Semiconductors</p> <p>LED OSLOM Square EC FWHM / FWTM 26.0° / 41.0° Efficiency 89 % Peak intensity 4.5 cd/lm LEDs/each optic 1 Light colour White Required components:</p>	