

GABRIELLA-MIDI-O

~12+40° oval beam with holder and installation tape

SPECIFICATION:

Dimensions	Ø 37.8 mm
Height	24.1 mm
Fastening	tape, pin
ROHS compliant	yes ⓘ

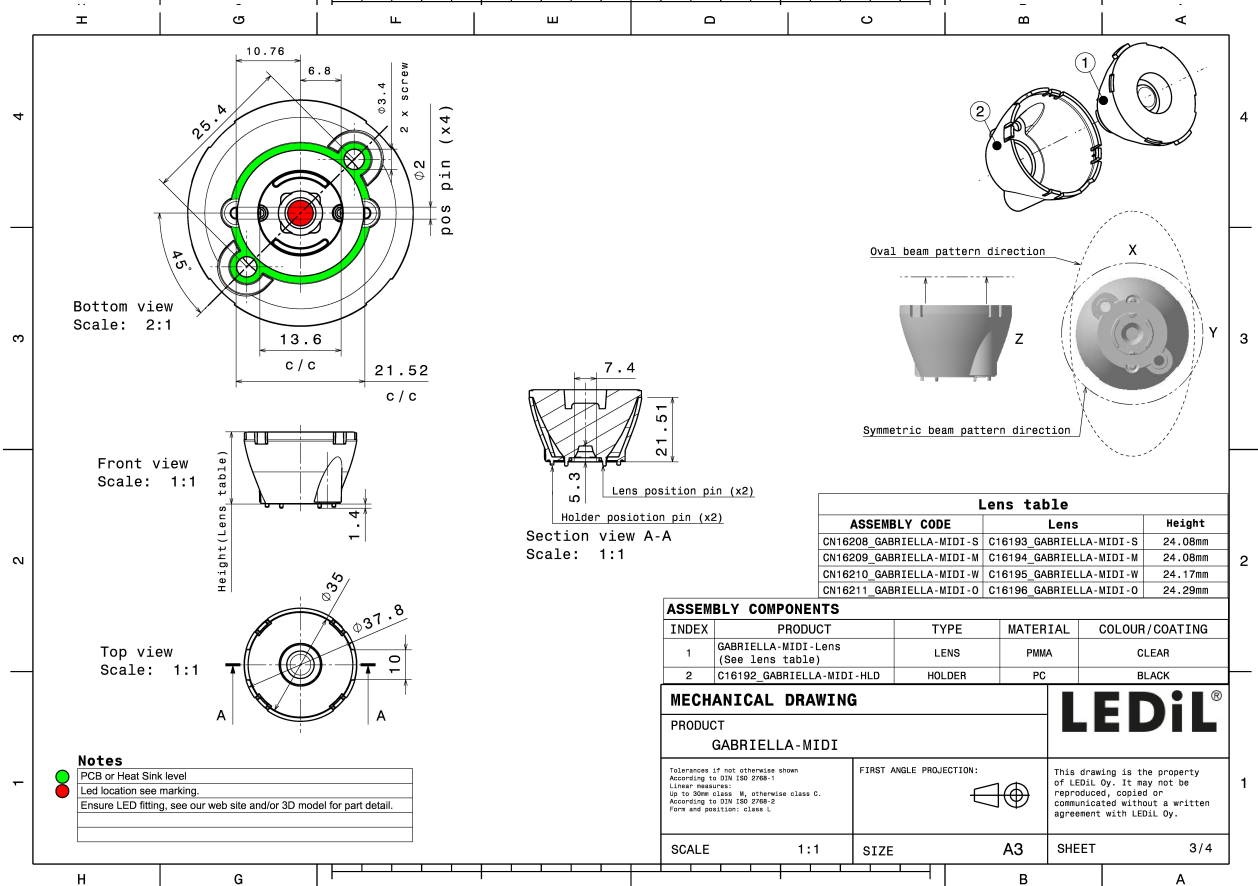
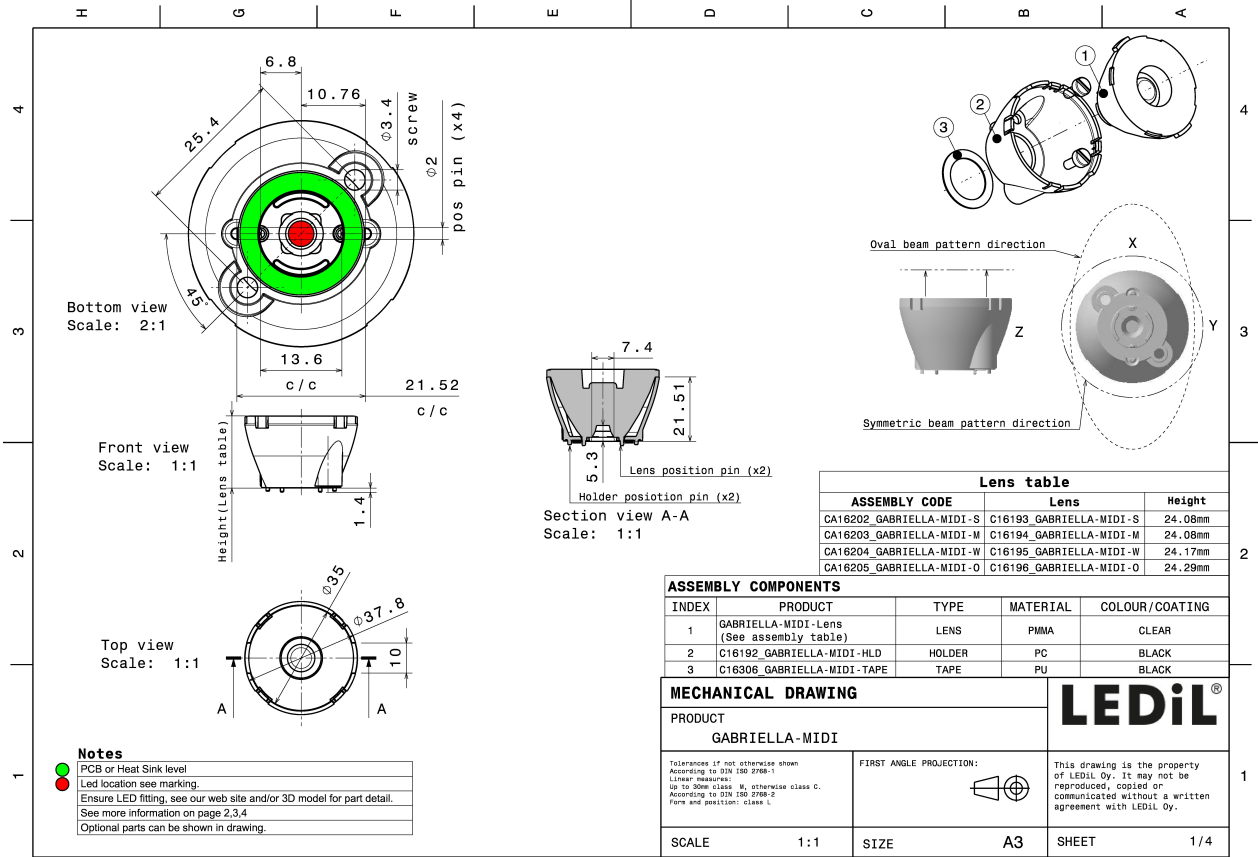


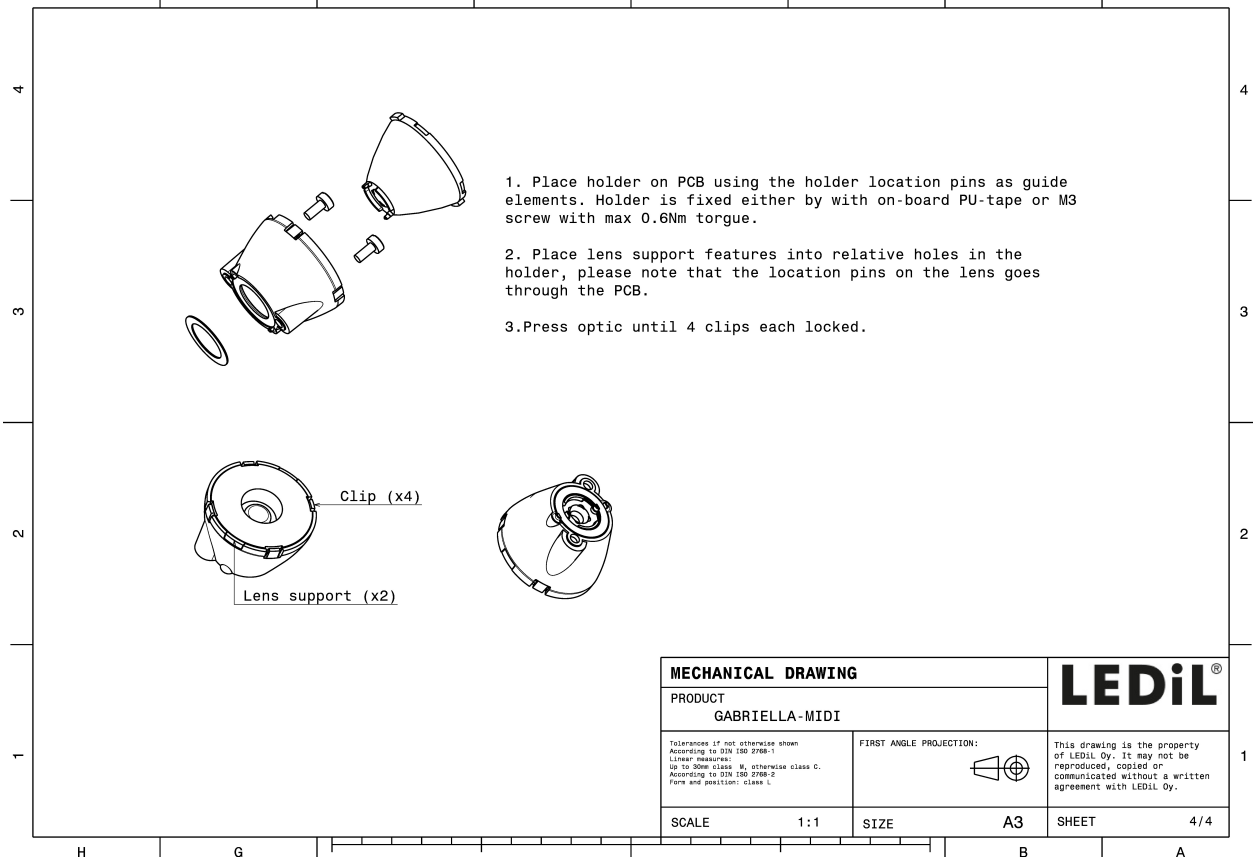
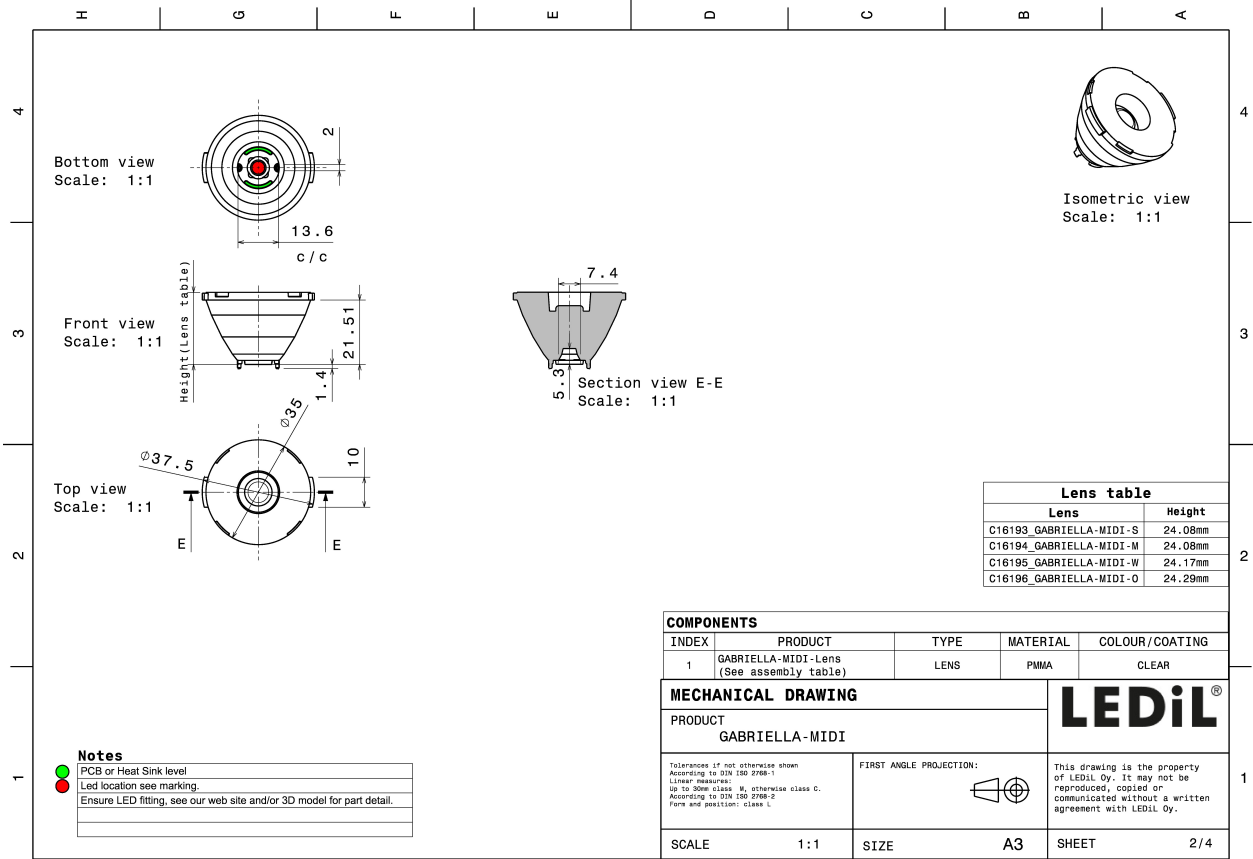
MATERIALS:

Component	Type	Material	Colour	Finish
GABRIELLA-MIDI-O	Single lens	PMMA	clear	
GABRIELLA-MIDI-HLD	Assembly	PC	black	

ORDERING INFORMATION:

Component		Qty in box	MOQ	MPQ	Box weight (kg)
CA16205_GABRIELLA-MIDI-O	Single lens	500	100	50	10.9
» Box size: 476 x 273 x 292 mm					



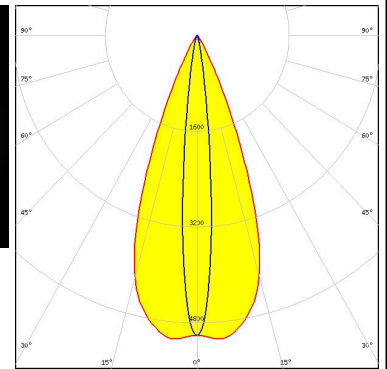


See also our general installation guide: www.ledil.com/installation_guide

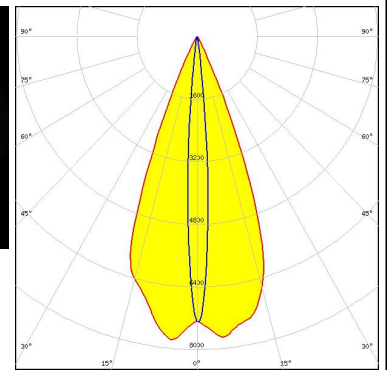
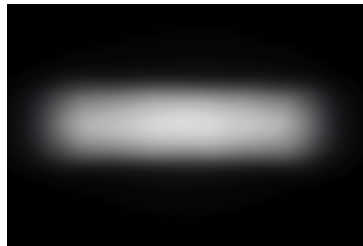
OPTICAL RESULTS (MEASURED):



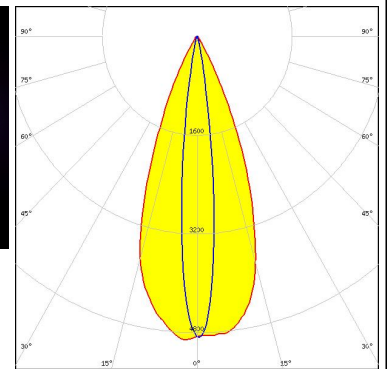
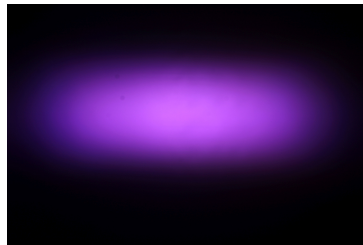
LED XM-L RGBW (XMLDCL HI)
 FWHM / FWTM 42.0 + 11.0° / 58.0 + 22.0°
 Efficiency 86 %
 Peak intensity 5.1 cd/lm
 LEDs/each optic 1
 Light colour RGBW
 Required components:



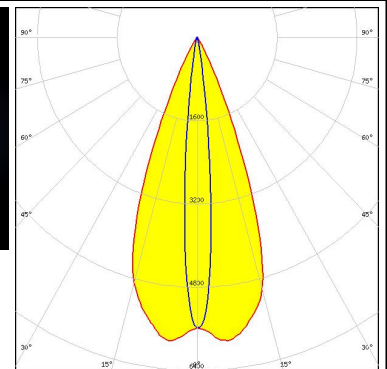
LED OSTAR Projection Compact (KW.CSLNM1.TG)
 FWHM / FWTM 42.0 + 9.0° / 54.0 + 16.0°
 Efficiency 90 %
 Peak intensity 7.8 cd/lm
 LEDs/each optic 1
 Light colour White
 Required components:





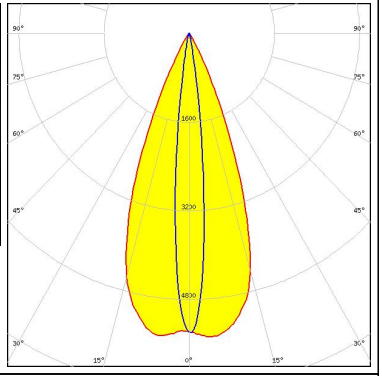


LED OSTAR Stage (S2WP)
 FWHM / FWTM 40.0 + 12.0° / 60.0 + 23.0°
 Efficiency 87 %
 Peak intensity 4.9 cd/lm
 LEDs/each optic 1
 Light colour RGBW
 Required components:



LED SPF05F0A
 FWHM / FWTM 42.0 + 11.0° / 57.0 + 20.0°
 Efficiency 88 %
 Peak intensity 5.9 cd/lm
 LEDs/each optic 1
 Light colour RGBW
 Required components:



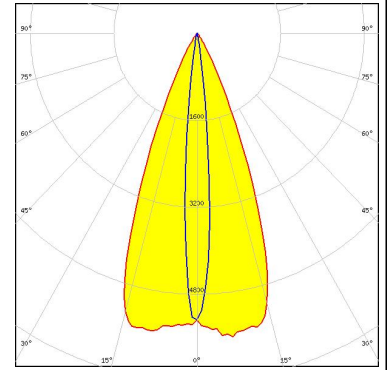
OPTICAL RESULTS (MEASURED):

<p> SEOL SEMICONDUCTOR</p> <p>LED: SPF05F0B</p> <p>FWHM / FWTM: 41.0 + 12.0° / 58.0 + 21.0°</p> <p>Efficiency: 88 %</p> <p>Peak intensity: 5.5 cd/lm</p> <p>LEDs/each optic: 1</p> <p>Light colour: RGBW</p> <p>Required components:</p>		
<p> SEOL SEMICONDUCTOR</p> <p>LED: SPF05F0C</p> <p>FWHM / FWTM: 41.0 + 13.0° / 60.0 + 23.0°</p> <p>Efficiency: 87 %</p> <p>Peak intensity: 4.7 cd/lm</p> <p>LEDs/each optic: 1</p> <p>Light colour: RGBW</p> <p>Required components:</p>		

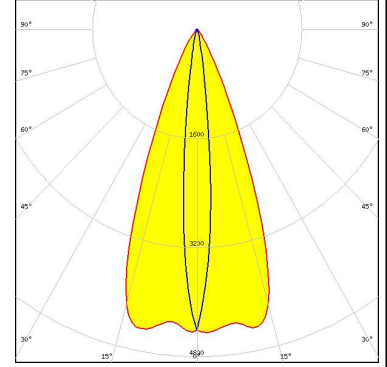
OPTICAL RESULTS (SIMULATED):



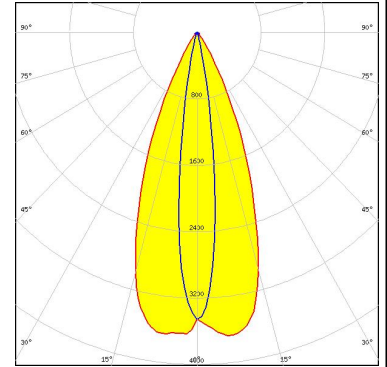
LED XHP35 HI
 FWHM / FWTM 43.0 + 10.0° / 60.0 + 18.0°
 Efficiency 87 %
 Peak intensity 5.6 cd/lm
 LEDs/each optic 1
 Light colour White
 Required components:



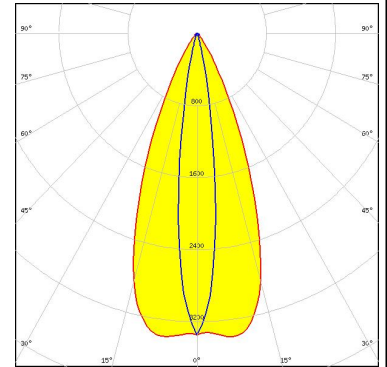
LED XHP35.2 HD
 FWHM / FWTM 42.0 + 10.0° / 61.0 + 21.0°
 Efficiency 83 %
 Peak intensity 4.5 cd/lm
 LEDs/each optic 1
 Light colour White
 Required components:



LED XHP50
 FWHM / FWTM 42.0 + 14.0° / 64.0 + 26.0°
 Efficiency 84 %
 Peak intensity 3.7 cd/lm
 LEDs/each optic 1
 Light colour White
 Required components:



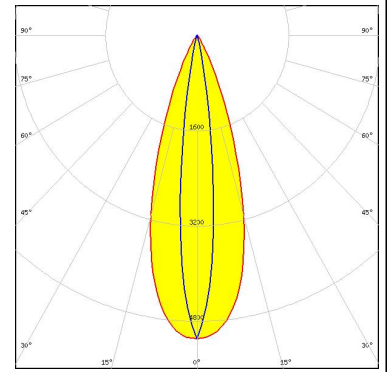
LED XHP50.2
 FWHM / FWTM 42.0 + 14.0° / 66.0 + 28.0°
 Efficiency 82 %
 Peak intensity 3.4 cd/lm
 LEDs/each optic 1
 Light colour White
 Required components:



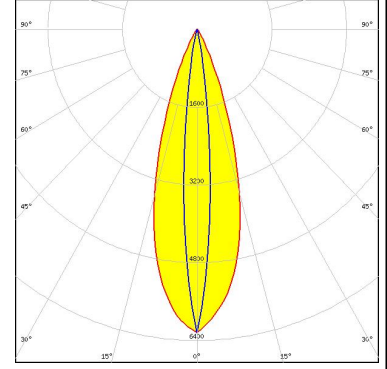
OPTICAL RESULTS (SIMULATED):



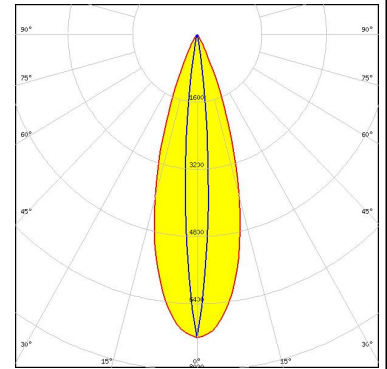
LED XM-L RGBW (XMLCTW)
 FWHM / FWTM 13.0 + 34.0° / 24.0 + 57.0°
 Efficiency 86 %
 Peak intensity 5.1 cd/lm
 LEDs/each optic 1
 Light colour White
 Required components:



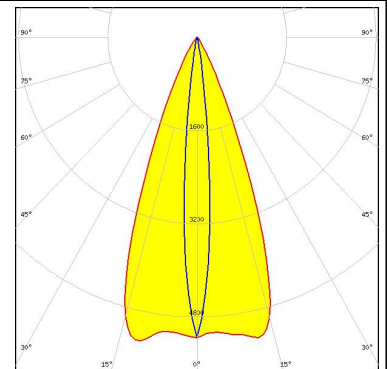
LED XM-L2
 FWHM / FWTM 11.0 + 33.0° / 21.0 + 54.0°
 Efficiency 87 %
 Peak intensity 6.2 cd/lm
 LEDs/each optic 1
 Light colour White
 Required components:



LED XP-G2
 FWHM / FWTM 9.0 + 33.0° / 19.0 + 53.0°
 Efficiency 87 %
 Peak intensity 7.2 cd/lm
 LEDs/each optic 1
 Light colour White
 Required components:



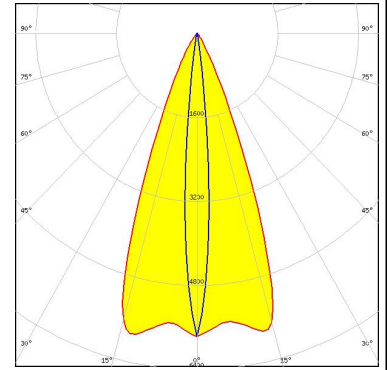
LED XP-G2 HE
 FWHM / FWTM 42.0 + 10.0° / 60.0 + 19.0°
 Efficiency 86 %
 Peak intensity 5.3 cd/lm
 LEDs/each optic 1
 Light colour White
 Required components:



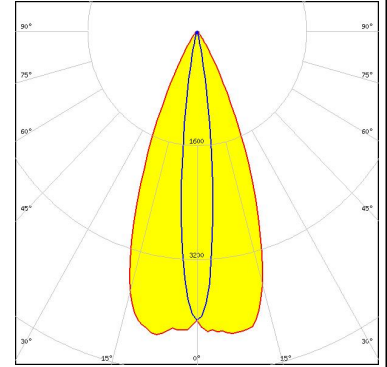
OPTICAL RESULTS (SIMULATED):



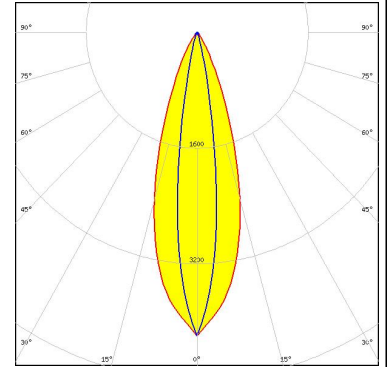
LED XP-L HI
 FWHM / FWTM 42.0 + 10.0° / 59.0 + 18.0°
 Efficiency 87 %
 Peak intensity 5.9 cd/lm
 LEDs/each optic 1
 Light colour White
 Required components:



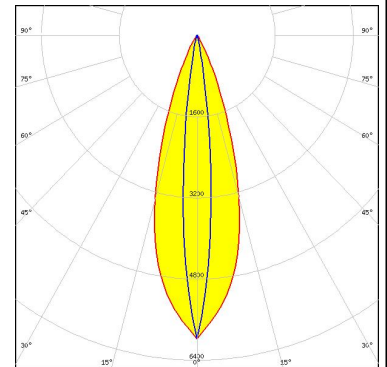
LED LUXEON 5050 Round LES
 FWHM / FWTM 12.0 + 44.0° / 22.0 + 64.0°
 Efficiency 86 %
 Peak intensity 4.3 cd/lm
 LEDs/each optic 1
 Light colour White
 Required components:



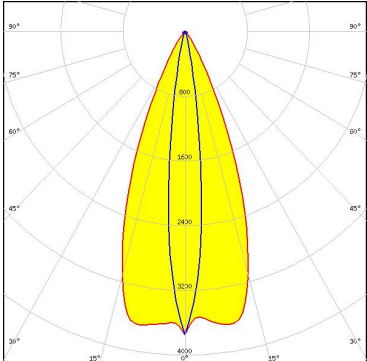
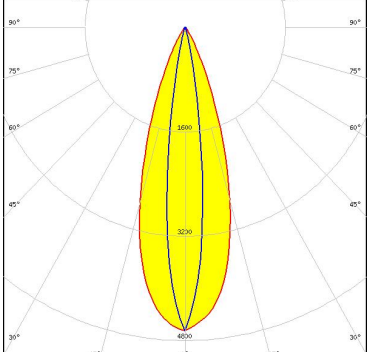
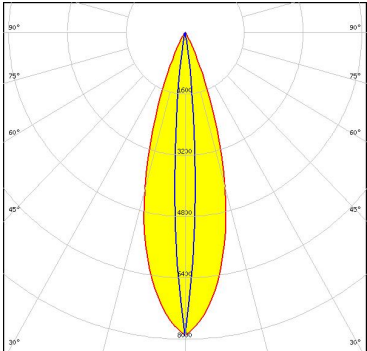
LED LUXEON M/MX
 FWHM / FWTM 15.0 + 33.0° / 28.0 + 58.0°
 Efficiency 84 %
 Peak intensity 4.2 cd/lm
 LEDs/each optic 1
 Light colour White
 Required components:



LED LUXEON MZ
 FWHM / FWTM 11.0 + 32.0° / 22.0 + 55.0°
 Efficiency 86 %
 Peak intensity 6 cd/lm
 LEDs/each optic 1
 Light colour White
 Required components:



OPTICAL RESULTS (SIMULATED):

<p>NICHIA</p> <p>LED: NCSxE17A</p> <p>FWHM / FWTM: 42.0 + 12.0° / 64.0 + 24.0°</p> <p>Efficiency: 81 %</p> <p>Peak intensity: 3.8 cd/lm</p> <p>LEDs/each optic: 4</p> <p>Light colour: RGBW</p> <p>Required components:</p>	
<p>OSRAM Opto Semiconductors</p> <p>LED: Duris S8</p> <p>FWHM / FWTM: 14.0 + 34.0° / 26.0 + 57.0°</p> <p>Efficiency: 86 %</p> <p>Peak intensity: 4.7 cd/lm</p> <p>LEDs/each optic: 1</p> <p>Light colour: White</p> <p>Required components:</p>	
<p>OSRAM Opto Semiconductors</p> <p>LED: OSLON Square EC</p> <p>FWHM / FWTM: 8.0 + 31.0° / 17.0 + 52.0°</p> <p>Efficiency: 87 %</p> <p>Peak intensity: 7.9 cd/lm</p> <p>LEDs/each optic: 1</p> <p>Light colour: White</p> <p>Required components:</p>	
<p>OSRAM Opto Semiconductors</p> <p>LED: OSTAR Stage (S2WN)</p> <p>FWHM / FWTM: 9.0 + 38.0° / 17.0 + 57.0°</p> <p>Efficiency: 87 %</p> <p>Peak intensity: 7.2 cd/lm</p> <p>LEDs/each optic: 1</p> <p>Light colour: White</p> <p>Required components:</p>	