

SURI-RS

~6° real spot beam. Assembly with holder and installation tape.

SPECIFICATION:

Dimensions	Ø 37.8 mm
Height	24 mm
Fastening	tape, pin
ROHS compliant	yes ⓘ

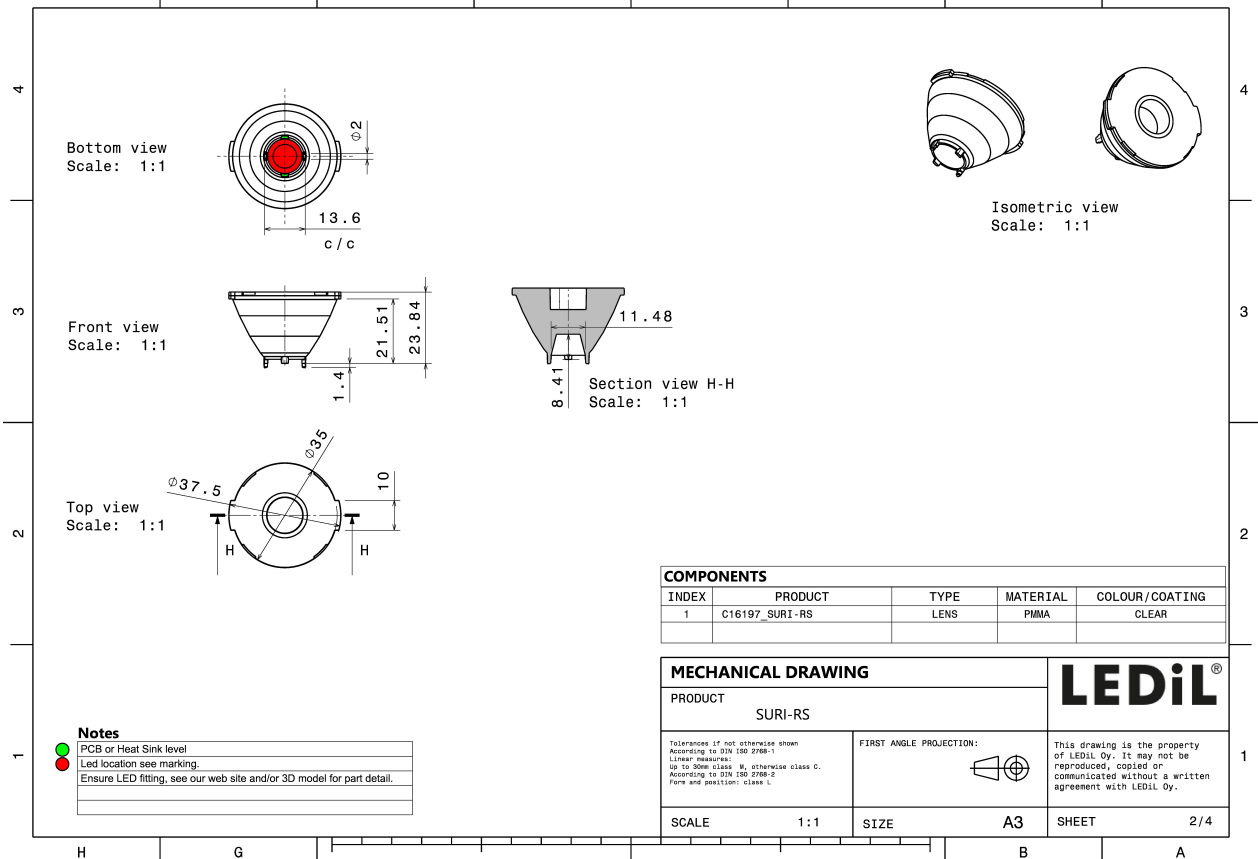
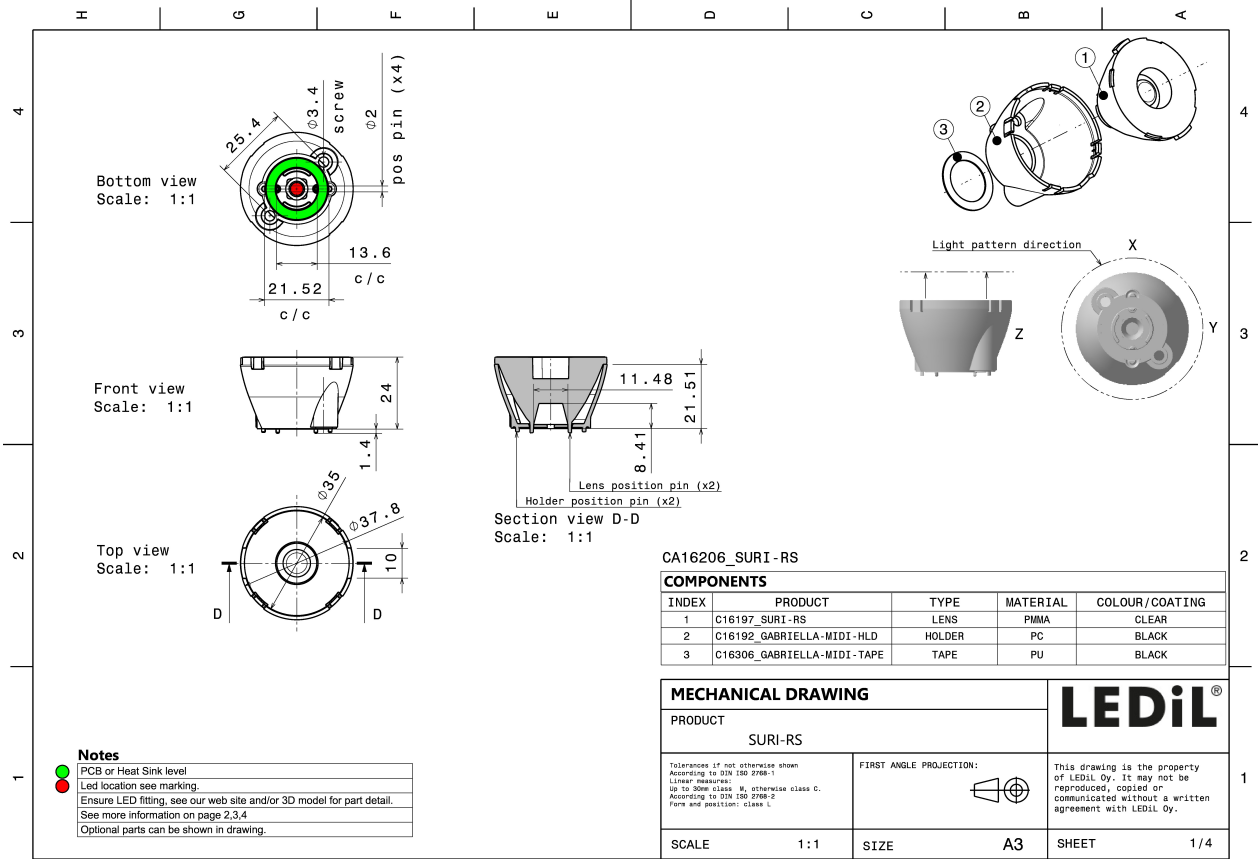
MATERIALS:

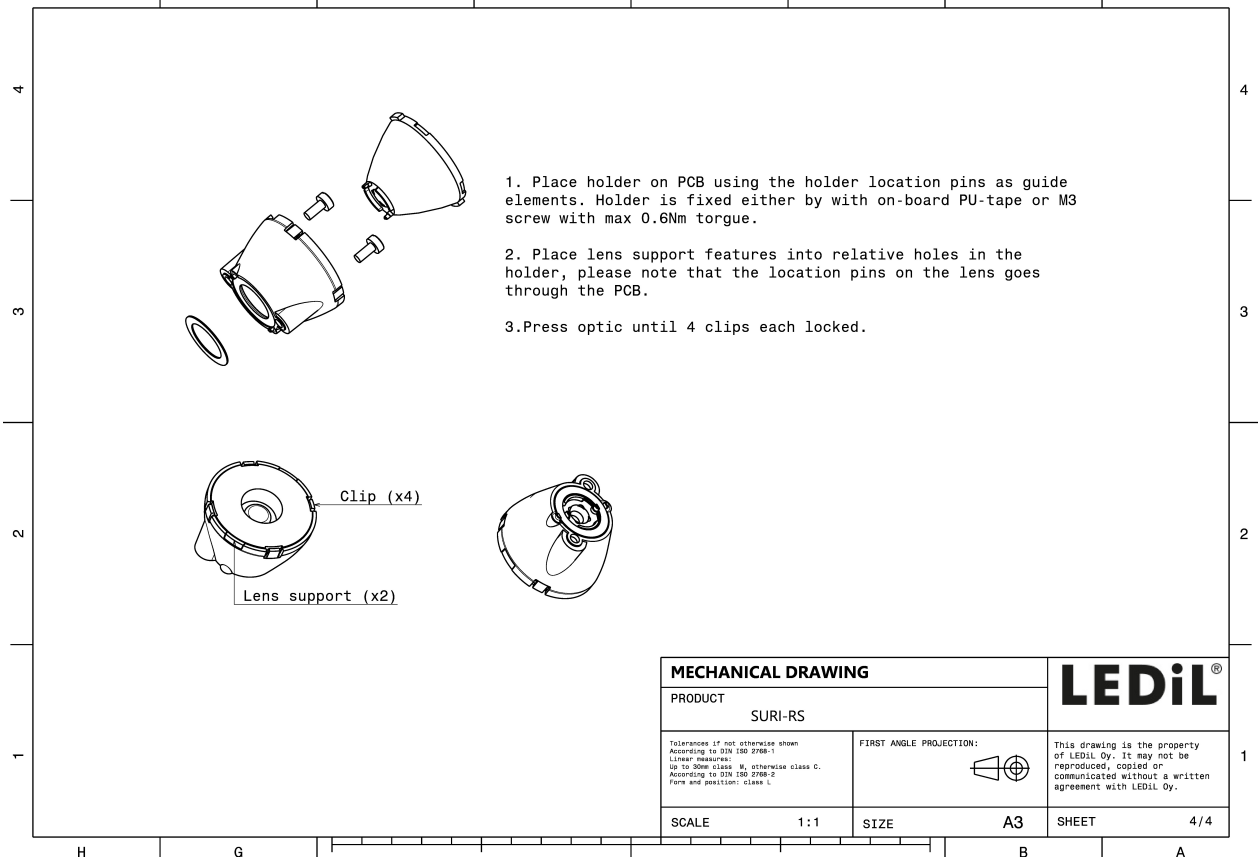
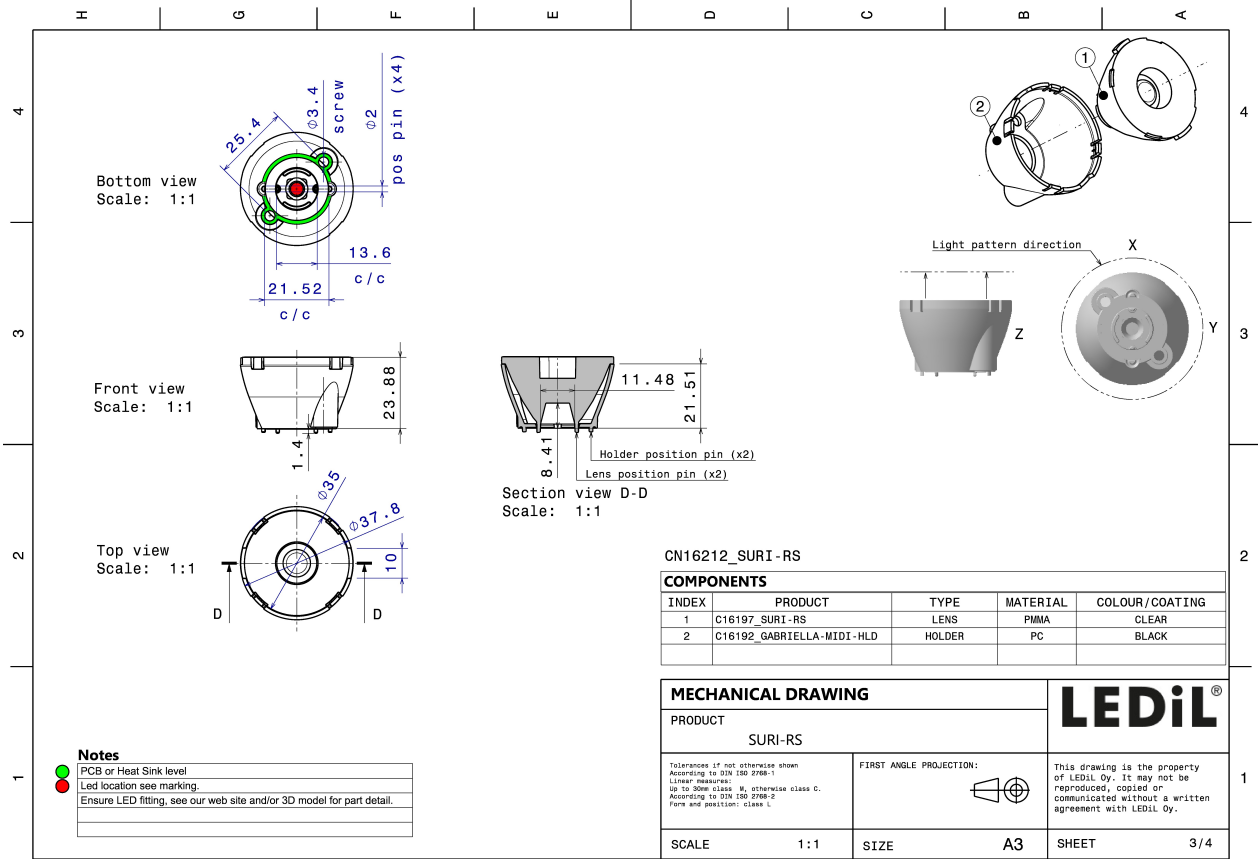
Component	Type	Material	Colour	Finish
SURI-RS	Single lens	PMMA	clear	
GABRIELLA-MIDI-HLD	Assembly	PC	black	

ORDERING INFORMATION:

Component	Type	Qty in box	MOQ	MPQ	Box weight (kg)
CA16206_SURI-RS	Single lens	500	100	50	11.7
» Box size: 476 x 273 x 292 mm					


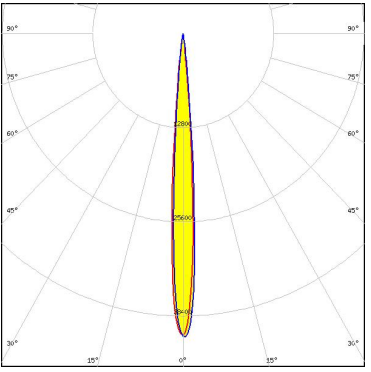

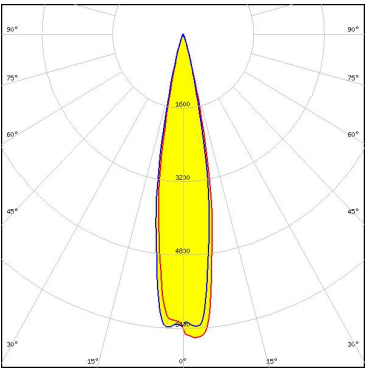
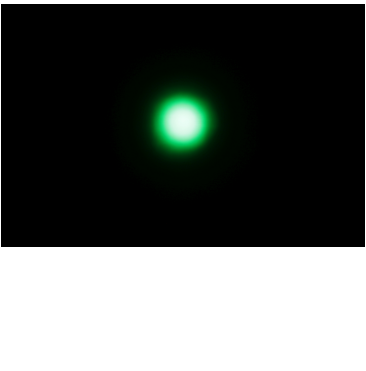
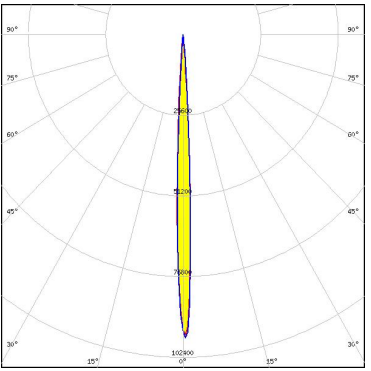

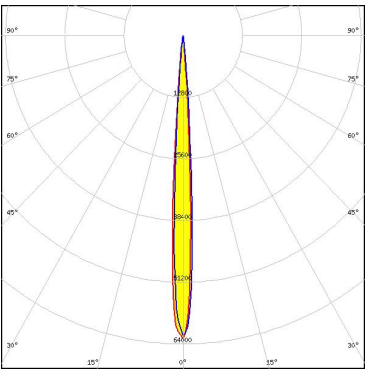






See also our general installation guide: www.ledil.com/installation_guide

OPTICAL RESULTS (MEASURED):

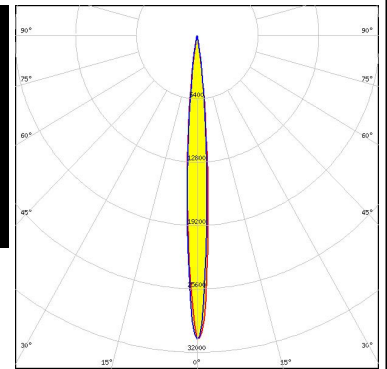
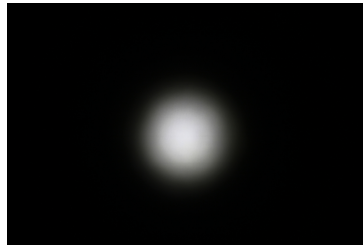
<p>CREE LEDs</p> <p>LED XHP35 HI FWHM / FWTM 8.0° / 13.0° Efficiency 91 % Peak intensity 41 cd/lm LEDs/each optic 1 Light colour White Required components:</p>		
<p>CREE LEDs</p> <p>LED XHP70.2 FWHM / FWTM 20.0° / 32.0° Efficiency 87 % Peak intensity 6.6 cd/lm LEDs/each optic 1 Light colour White Required components:</p>		
<p>CREE LEDs</p> <p>LED XP-E2 FWHM / FWTM 5.0° / 9.0° Efficiency 93 % Peak intensity 101 cd/lm LEDs/each optic 1 Light colour Green Required components:</p>		
<p>CREE LEDs</p> <p>LED XP-G2 FWHM / FWTM 7.0° / 11.0° Efficiency 94 % Peak intensity 63.1 cd/lm LEDs/each optic 1 Light colour White Required components:</p>		

OPTICAL RESULTS (MEASURED):

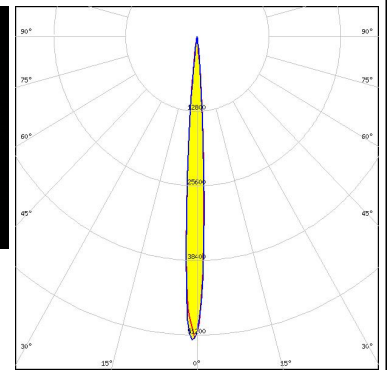


LED XP-L HI
 FWHM / FWTM 8.0° / 17.0°
 Efficiency 90 %
 Peak intensity 30.6 cd/lm
 LEDs/each optic 1
 Light colour White
 Required components:

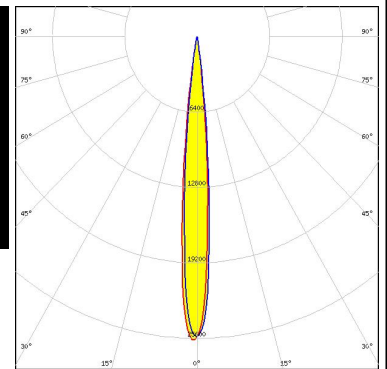
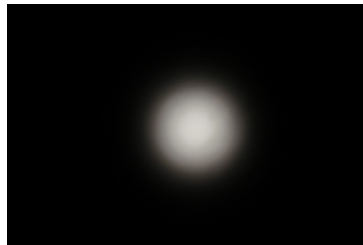
Protective plate, glass



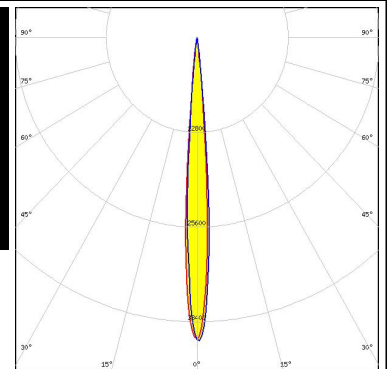
LED XP-L HI
 FWHM / FWTM 7.0° / 12.0°
 Efficiency 91 %
 Peak intensity 52.4 cd/lm
 LEDs/each optic 1
 Light colour White
 Required components:




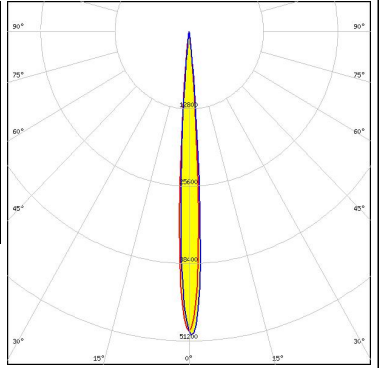

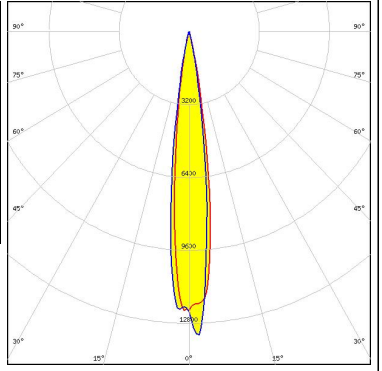

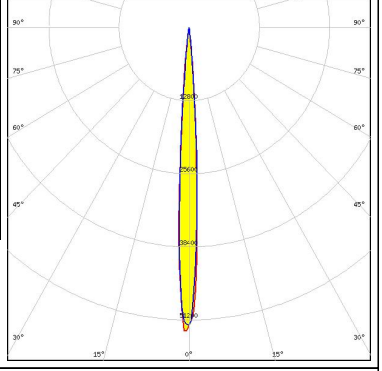

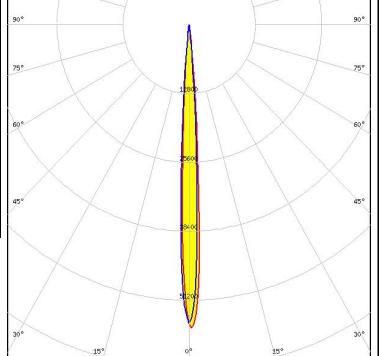
LED LUXEON V
 FWHM / FWTM 10.0° / 17.0°
 Efficiency 88 %
 Peak intensity 26 cd/lm
 LEDs/each optic 1
 Light colour White
 Required components:



LED NVSW219F
 FWHM / FWTM 8.0° / 13.0°
 Efficiency 91 %
 Peak intensity 41 cd/lm
 LEDs/each optic 1
 Light colour White
 Required components:



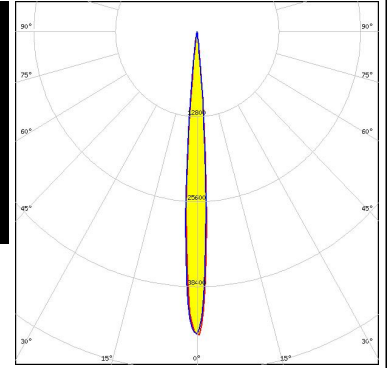
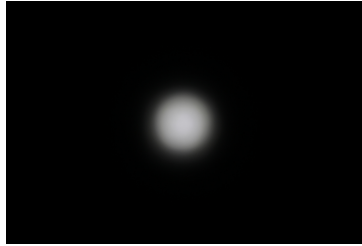
OPTICAL RESULTS (MEASURED):

<p>NICHIA</p> <p>LED NVSW719AC</p> <p>FWHM / FWTM 7.0° / 12.0°</p> <p>Efficiency 91 %</p> <p>Peak intensity 50.5 cd/lm</p> <p>LEDs/each optic 1</p> <p>Light colour White</p> <p>Required components:</p>		
<p>OSRAM Opto Semiconductors</p> <p>LED Duris S8</p> <p>FWHM / FWTM 14.0° / 24.0°</p> <p>Efficiency 90 %</p> <p>Peak intensity 13 cd/lm</p> <p>LEDs/each optic 1</p> <p>Light colour White</p> <p>Required components:</p>		
<p>OSRAM Opto Semiconductors</p> <p>LED OSLOM Square CSSRM2/CSSRM3</p> <p>FWHM / FWTM 7.0° / 12.0°</p> <p>Efficiency 91 %</p> <p>Peak intensity 53 cd/lm</p> <p>LEDs/each optic 1</p> <p>Light colour White</p> <p>Required components:</p>		
<p>OSRAM Opto Semiconductors</p> <p>LED OSLOM Square EC</p> <p>FWHM / FWTM 6.0° / 12.0°</p> <p>Efficiency 90 %</p> <p>Peak intensity 56 cd/lm</p> <p>LEDs/each optic 1</p> <p>Light colour White</p> <p>Required components:</p>		

OPTICAL RESULTS (MEASURED):

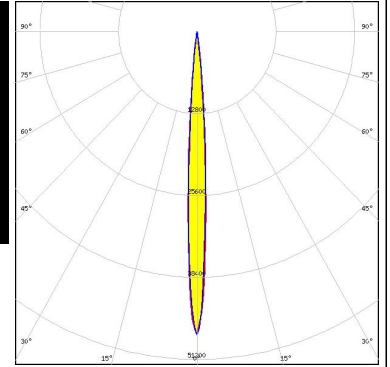
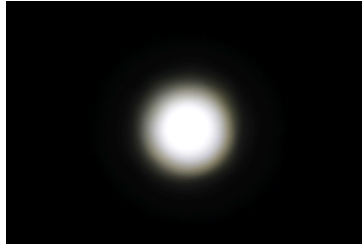
SAMSUNG

LED LH351B
 FWHM / FWTM 8.0° / 13.0°
 Efficiency 93 %
 Peak intensity 45.6 cd/lm
 LEDs/each optic 1
 Light colour White
 Required components:



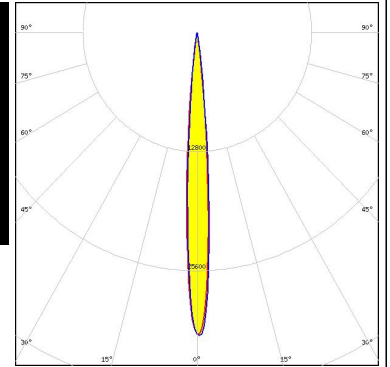
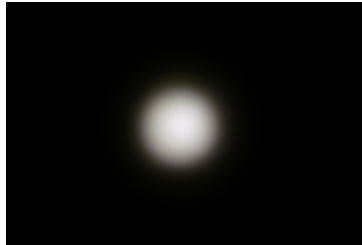
SAMSUNG

LED LM302A
 FWHM / FWTM 7.0° / 13.0°
 Efficiency 92 %
 Peak intensity 47 cd/lm
 LEDs/each optic 1
 Light colour White
 Required components:



SEOUL SEMICONDUCTOR

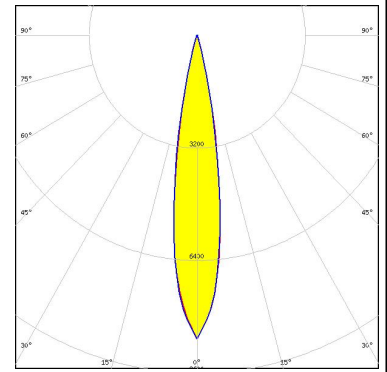
LED Z5M3
 FWHM / FWTM 8.0° / 15.0°
 Efficiency 88 %
 Peak intensity 32.8 cd/lm
 LEDs/each optic 1
 Light colour White
 Required components:



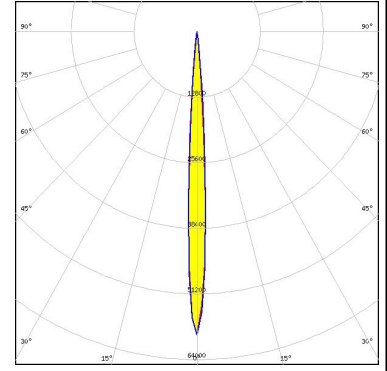
OPTICAL RESULTS (SIMULATED):



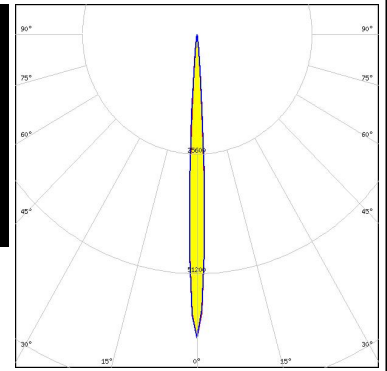
LED MHD-E/G
 FWHM / FWTM 18.0° / 30.0°
 Efficiency 91 %
 Peak intensity 8.6 cd/lm
 LEDs/each optic 1
 Light colour White
 Required components:



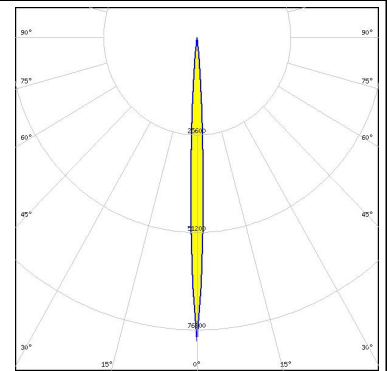
LED XB-H
 FWHM / FWTM 6.0° / 12.0°
 Efficiency 90 %
 Peak intensity 59.2 cd/lm
 LEDs/each optic 1
 Light colour White
 Required components:



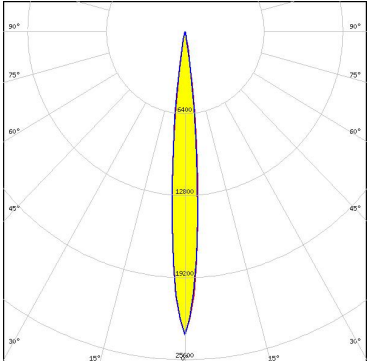
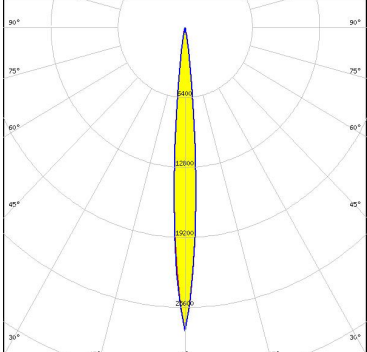
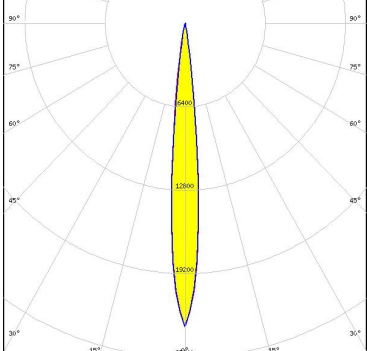
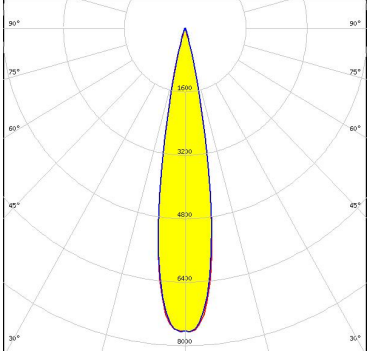
LED XD16
 FWHM / FWTM 5.9° / 11.0°
 Efficiency 89 %
 Peak intensity 65 cd/lm
 LEDs/each optic 1
 Light colour White
 Required components:



LED XE-G
 FWHM / FWTM 6.0° / 10.0°
 Efficiency 89 %
 Peak intensity 79.7 cd/lm
 LEDs/each optic 1
 Light colour White
 Required components:



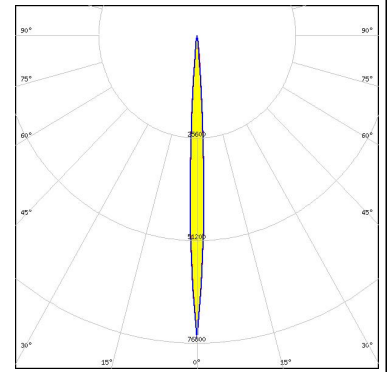
OPTICAL RESULTS (SIMULATED):

<p>CREE LEDs</p> <p>LED: XHP35 HD FWHM / FWTM: 10.0° / 18.0° Efficiency: 91 % Peak intensity: 23.7 cd/lm LEDs/each optic: 1 Light colour: White Required components:</p>	
<p>CREE LEDs</p> <p>LED: XHP35.2 HD FWHM / FWTM: 8.0° / 18.0° Efficiency: 87 % Peak intensity: 27.8 cd/lm LEDs/each optic: 1 Light colour: White Required components:</p>	
<p>CREE LEDs</p> <p>LED: XHP50.3 HI FWHM / FWTM: 10.0° / 18.0° Efficiency: 96 % Peak intensity: 23.3 cd/lm LEDs/each optic: 1 Light colour: White Required components:</p>	
<p>CREE LEDs</p> <p>LED: XHP70.3 HI FWHM / FWTM: 20.0° / 30.0° Efficiency: 95 % Peak intensity: 7.7 cd/lm LEDs/each optic: 1 Light colour: White Required components:</p>	

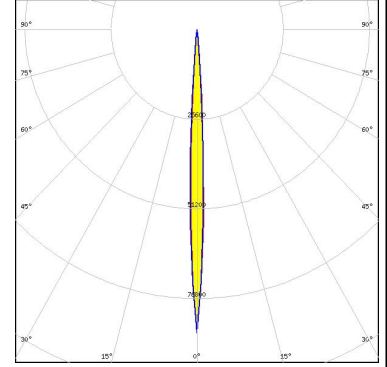
OPTICAL RESULTS (SIMULATED):



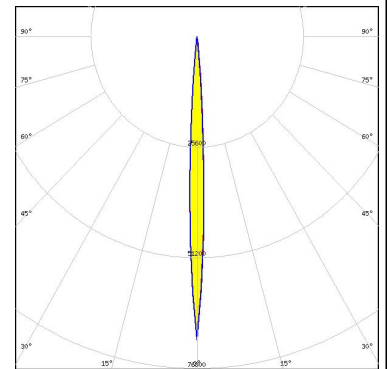
LED XP-E
 FWHM / FWTM 6.0° / 12.0°
 Efficiency 92 %
 Peak intensity 75.7 cd/lm
 LEDs/each optic 1
 Light colour White
 Required components:



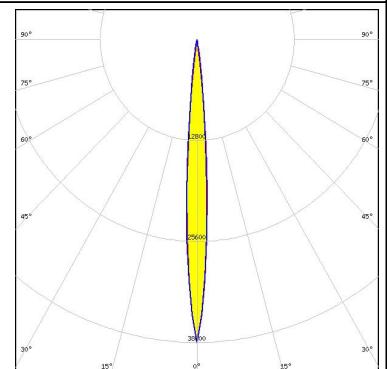
LED XP-E2
 FWHM / FWTM 5.0° / 10.0°
 Efficiency 91 %
 Peak intensity 85 cd/lm
 LEDs/each optic 1
 Light colour White
 Required components:



LED XP-E2
 FWHM / FWTM 6.0° / 12.0°
 Efficiency 90 %
 Peak intensity 70.2 cd/lm
 LEDs/each optic 1
 Light colour Red
 Required components:



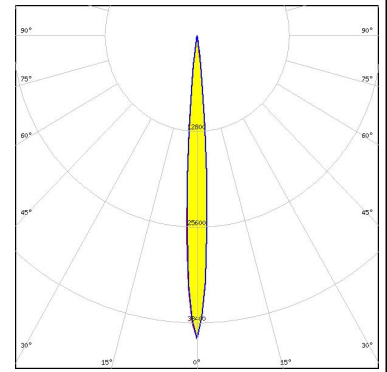
LED XP-G2 HE
 FWHM / FWTM 8.0° / 14.0°
 Efficiency 90 %
 Peak intensity 38.5 cd/lm
 LEDs/each optic 1
 Light colour White
 Required components:



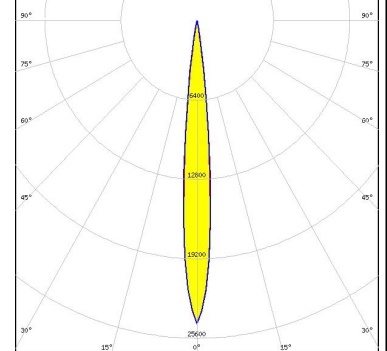
OPTICAL RESULTS (SIMULATED):



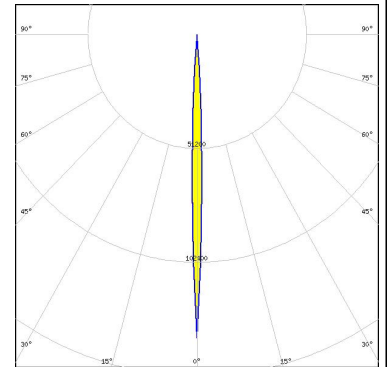
LED XP-G3
 FWHM / FWTM 7.7° / 14.0°
 Efficiency 90 %
 Peak intensity 40.5 cd/lm
 LEDs/each optic 1
 Light colour White
 Required components:



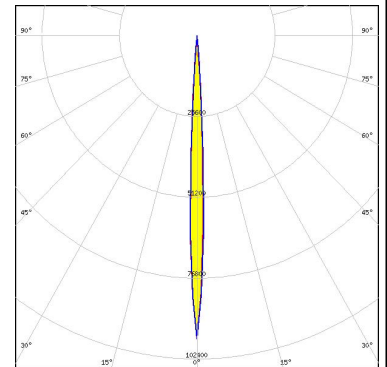
LED XP-L2
 FWHM / FWTM 10.0° / 18.0°
 Efficiency 89 %
 Peak intensity 24.4 cd/lm
 LEDs/each optic 1
 Light colour White
 Required components:



LED XP-P
 FWHM / FWTM 4.0° / 8.0°
 Efficiency 90 %
 Peak intensity 136.5 cd/lm
 LEDs/each optic 1
 Light colour White
 Required components:



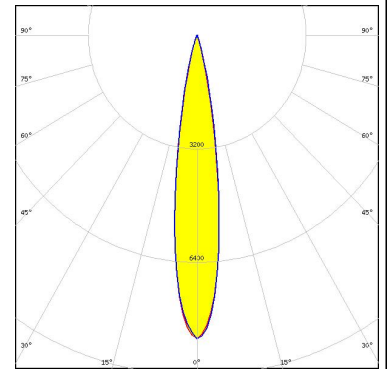
LED XQ-E HD
 FWHM / FWTM 5.2° / 9.5°
 Efficiency 92 %
 Peak intensity 96.1 cd/lm
 LEDs/each optic 1
 Light colour White
 Required components:



OPTICAL RESULTS (SIMULATED):

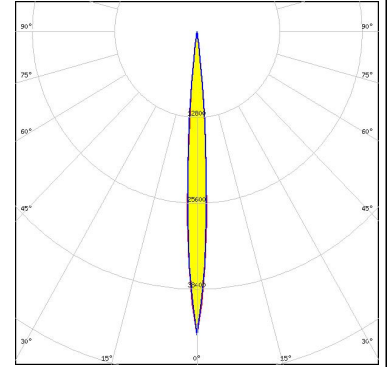
LUMILEDS

LED LUXEON 7070
 FWHM / FWTM 16.0° / 30.0°
 Efficiency 90 %
 Peak intensity 8.6 cd/lm
 LEDs/each optic 1
 Light colour White
 Required components:



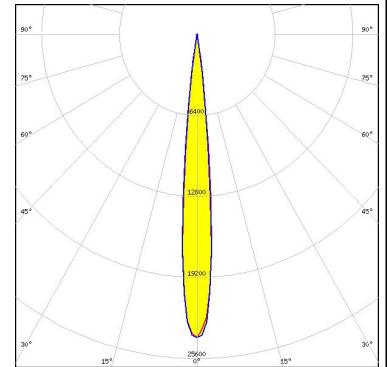
LUMILEDS

LED LUXEON HL2X
 FWHM / FWTM 8.0° / 14.0°
 Efficiency 92 %
 Peak intensity 45.2 cd/lm
 LEDs/each optic 1
 Light colour White
 Required components:



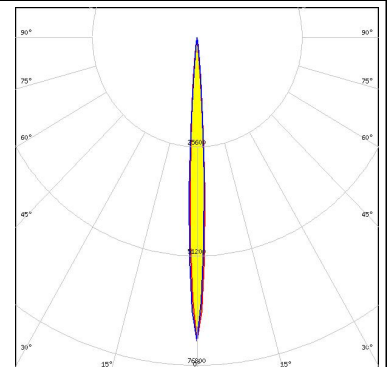
LUMILEDS

LED LUXEON MZ
 FWHM / FWTM 10.5° / 17.8°
 Efficiency 94 %
 Peak intensity 24.3 cd/lm
 LEDs/each optic 1
 Light colour White
 Required components:

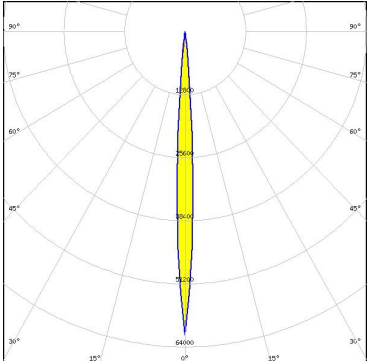
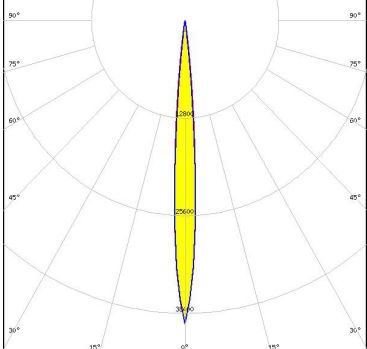
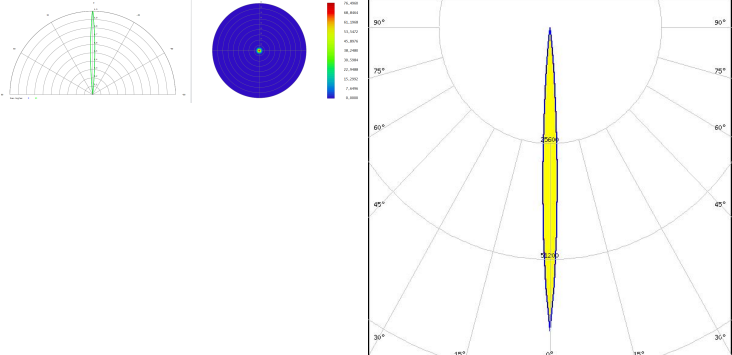
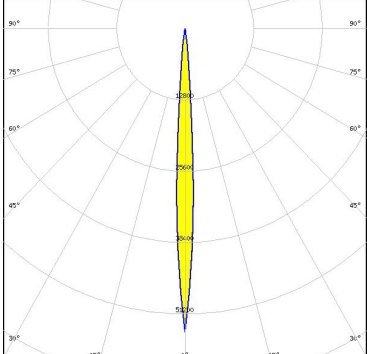


LUMILEDS

LED LUXEON Rebel Plus
 FWHM / FWTM 6.0° / 11.0°
 Efficiency 89 %
 Peak intensity 71.1 cd/lm
 LEDs/each optic 1
 Light colour White
 Required components:



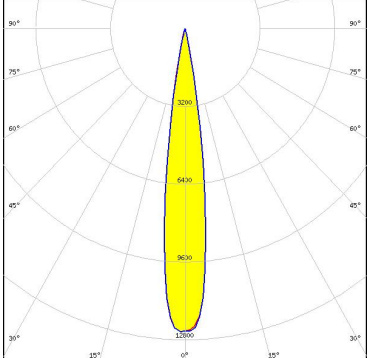
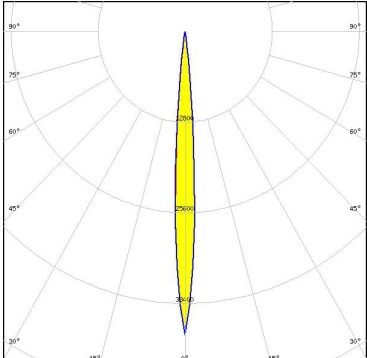
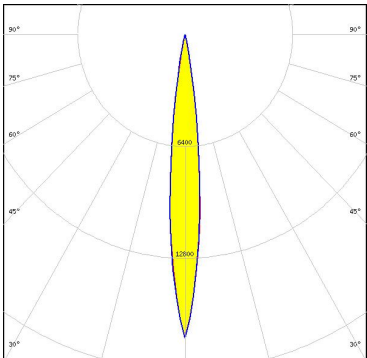
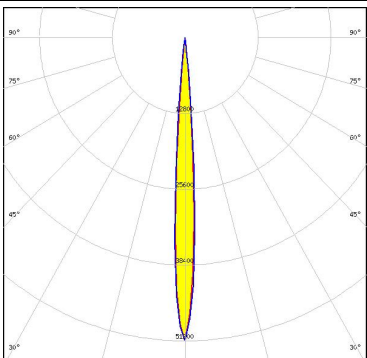
OPTICAL RESULTS (SIMULATED):

<p>LUMINUS</p> <p>LED: SFT-40-WCS FWHM / FWTM: 6.0° / 12.0° Efficiency: 95 % Peak intensity: 61.6 cd/lm LEDs/each optic: 1 Light colour: White Required components:</p>	
<p>LUMINUS</p> <p>LED: SFT-70X-WCS FWHM / FWTM: 8.0° / 14.0° Efficiency: 96 % Peak intensity: 39.8 cd/lm LEDs/each optic: 1 Light colour: White Required components:</p>	
<p>LUMINUS</p> <p>LED: SST-10-B130 FWHM / FWTM: 6.0° / 11.0° Efficiency: 91 % LEDs/each optic: 1 Light colour: IR Required components:</p>	
<p>LUMINUS</p> <p>LED: SST-20 FWHM / FWTM: 6.0° / 12.0° Efficiency: 90 % Peak intensity: 54.4 cd/lm LEDs/each optic: 1 Light colour: White Required components:</p>	

OPTICAL RESULTS (SIMULATED):

<p>LUMINUS</p> <p>LED SST-40 FWHM / FWTM 10.0° / 18.0° Efficiency 91 % Peak intensity 28.5 cd/lm LEDs/each optic 1 Light colour White Required components:</p>	
<p>LUMINUS</p> <p>LED SST-70X-WCS FWHM / FWTM 12.0° / 20.0 + 18.0° Efficiency 96 % Peak intensity 21 cd/lm LEDs/each optic 1 Light colour White Required components:</p>	
<p>NICHIA</p> <p>LED NV4WB35AM FWHM / FWTM 10.0° / 18.0° Efficiency 91 % Peak intensity 25.7 cd/lm LEDs/each optic 1 Light colour White Required components:</p>	
<p>NICHIA</p> <p>LED NV4WB35AM FWHM / FWTM 10.0° / 18.0° Efficiency 91 % Peak intensity 25.8 cd/lm LEDs/each optic 1 Light colour White Required components:</p>	

OPTICAL RESULTS (SIMULATED):

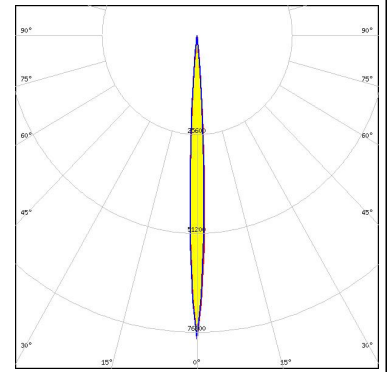
<p>NICHIA</p> <p>LED: NV4x144A FWHM / FWTM: 15.0° / 24.0° Efficiency: 89 % Peak intensity: 12.6 cd/lm LEDs/each optic: 1 Light colour: White Required components:</p>	
<p>NICHIA</p> <p>LED: NVSxx19B/NVSxx19C FWHM / FWTM: 7.5° / 14.4° Efficiency: 91 % Peak intensity: 42.9 cd/lm LEDs/each optic: 1 Light colour: White Required components:</p>	
<p>OSRAM <small>Opto Semiconductors</small></p> <p>LED: OSOLON PURE 1010 FWHM / FWTM: 12.0° / 22.0° Efficiency: 88 % Peak intensity: 17.4 cd/lm LEDs/each optic: 9 Light colour: White Required components:</p>	
<p>OSRAM <small>Opto Semiconductors</small></p> <p>LED: SFH 4715AS FWHM / FWTM: 8.0° / 12.0° Efficiency: 90 % LEDs/each optic: 1 Light colour: IR Required components:</p>	

OPTICAL RESULTS (SIMULATED):

OSRAM

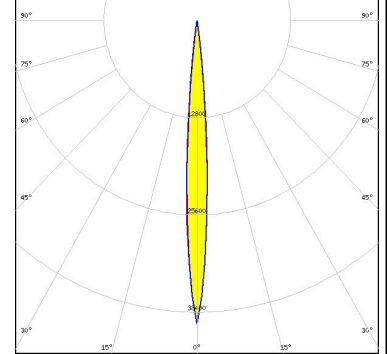
Opto Semiconductors

LED SFH 4716AS
 FWHM / FWTM 6.0° / 10.0°
 Efficiency 90 %
 LEDs/each optic 1
 Light colour IR
 Required components:



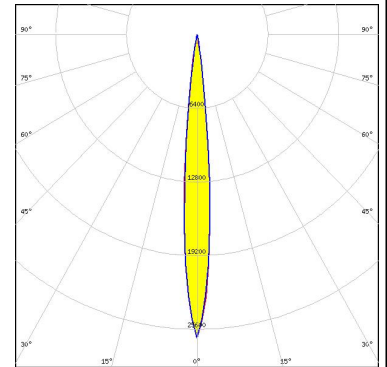
SAMSUNG

LED LH351C
 FWHM / FWTM 8.0° / 14.0°
 Efficiency 92 %
 Peak intensity 39.9 cd/m²
 LEDs/each optic 1
 Light colour White
 Required components:



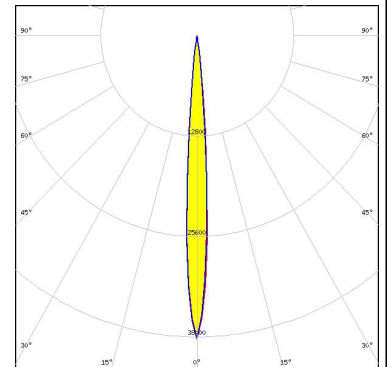
SAMSUNG

LED LH351D
 FWHM / FWTM 10.0° / 18.0°
 Efficiency 91 %
 Peak intensity 26.4 cd/m²
 LEDs/each optic 1
 Light colour White
 Required components:



SEOL SEMICONDUCTOR

LED Z8Y22P
 FWHM / FWTM 8.0° / 14.0°
 Efficiency 87 %
 Peak intensity 38.7 cd/m²
 LEDs/each optic 1
 Light colour White
 Required components:



OPTICAL RESULTS (SIMULATED):

