

LXP2-SS-WAS

Asymmetric beam. Assembly with installation tape.

SPECIFICATION:

Dimensions	Ø 21.6 mm
Height	14.7 mm
Fastening	tape
ROHS compliant	yes ⓘ

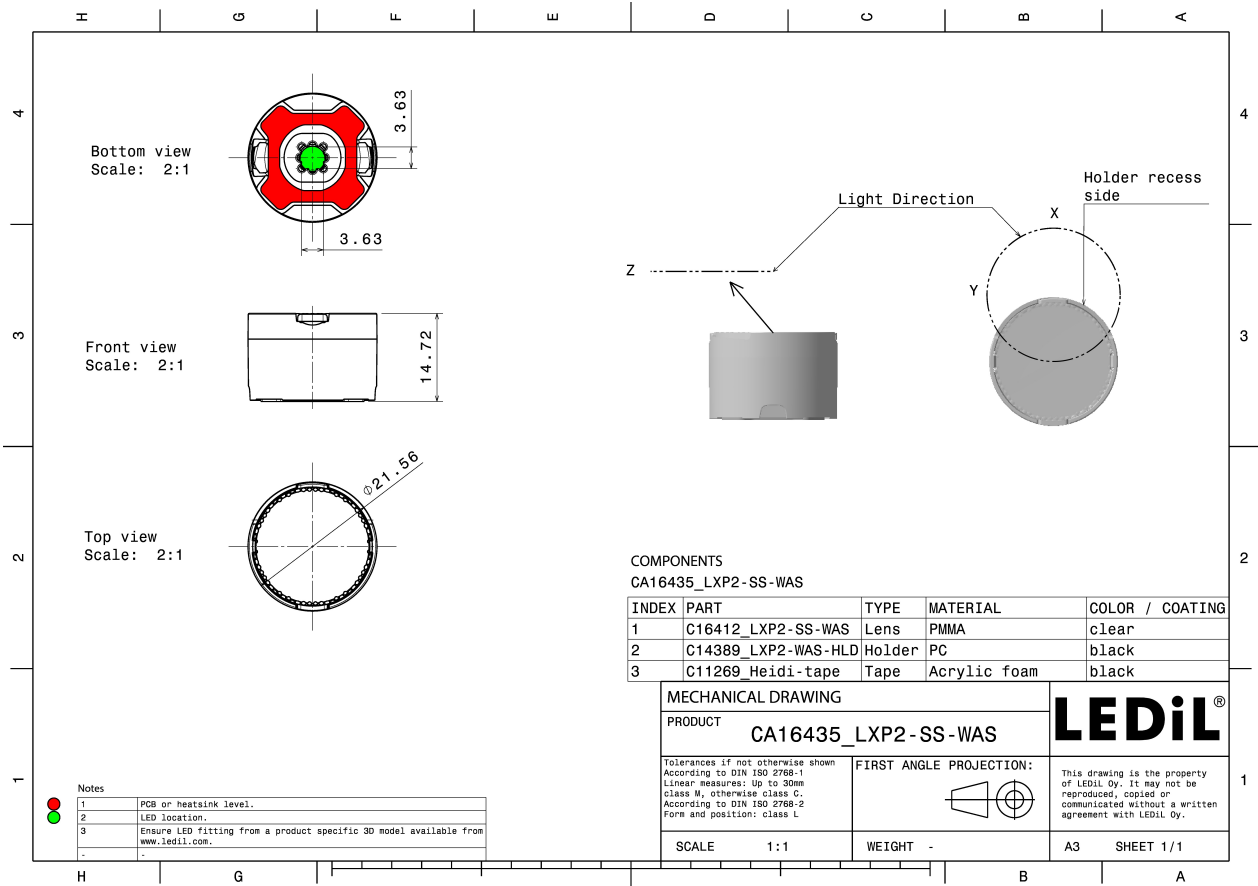


MATERIALS:

Component	Type	Material	Colour	Finish
LXP2-SS-WAS	Single lens	PMMA	clear	
LXP2-WAS-HLD	Holder	PC	black	
HEIDI-TAPE	Tape	Acrylic foam	black	

ORDERING INFORMATION:

Component		Qty in box	MOQ	MPQ	Box weight (kg)
CA16435_LXP2-SS-WAS	Single lens	1680	336	112	9.1
» Box size: 480 x 280 x 300 mm					



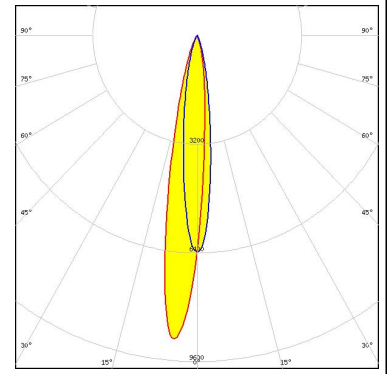
See also our general installation guide: www.ledil.com/installation_guide

OPTICAL RESULTS (MEASURED):

OSRAM

Opto Semiconductors

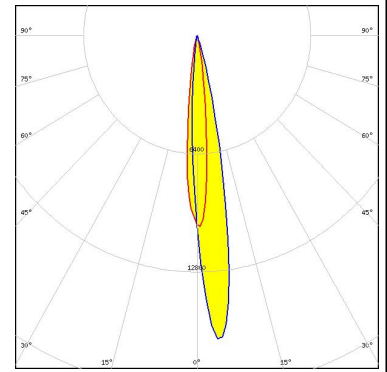
LED	OSLON Square CSSRM2/CSSRM3
FWHM / FWTM	Asymmetric
Efficiency	91 %
Peak intensity	9 cd/lm
LEDs/each optic	1
Light colour	White
Required components:	



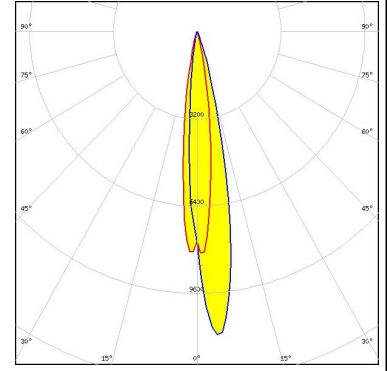
OPTICAL RESULTS (SIMULATED):



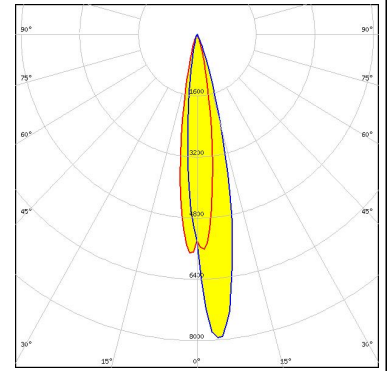
LED XP-E2
 FWHM / FWTM Asymmetric
 Efficiency 89 %
 Peak intensity 16 cd/lm
 LEDs/each optic 1
 Light colour White
 Required components:



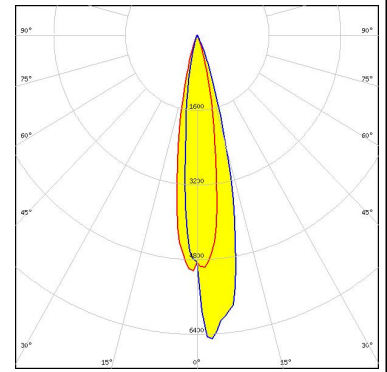
LED XP-G2
 FWHM / FWTM Asymmetric
 Efficiency 88 %
 Peak intensity 11 cd/lm
 LEDs/each optic 1
 Light colour White
 Required components:




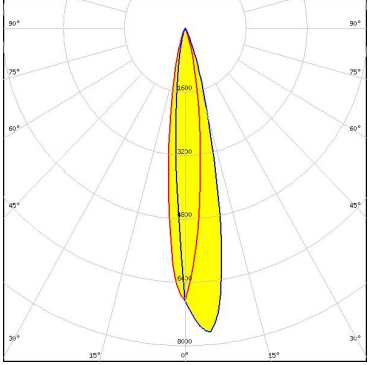


LED XP-G3
 FWHM / FWTM Asymmetric
 Efficiency 81 %
 Peak intensity 8 cd/lm
 LEDs/each optic 1
 Light colour White
 Required components:



LED XP-L HD
 FWHM / FWTM Asymmetric
 Efficiency 83 %
 Peak intensity 6.5 cd/lm
 LEDs/each optic 1
 Light colour White
 Required components:



OPTICAL RESULTS (SIMULATED):

 LED NVSxx19B/NVSxx19C FWHM / FWTM Asymmetric Efficiency 83 % Peak intensity 7.5 cd/lm LEDs/each optic 1 Light colour White Required components:	
 LED LM301B FWHM / FWTM Asymmetric Efficiency 94 % Peak intensity 11.9 cd/lm LEDs/each optic 1 Light colour White Required components:	
 SEOUL SEMICONDUCTOR LED Z5 FWHM / FWTM Asymmetric Efficiency 92 % Peak intensity 16.2 cd/lm LEDs/each optic 1 Light colour White Required components:	