

EMERALD-AP1-PC

Asymmetric beam for anti-panic lighting.
Assembly with installation tape.

SPECIFICATION:

Dimensions	Ø 21.6 mm
Height	6.9 mm
Fastening	tape, pin
ROHS compliant	yes ⓘ

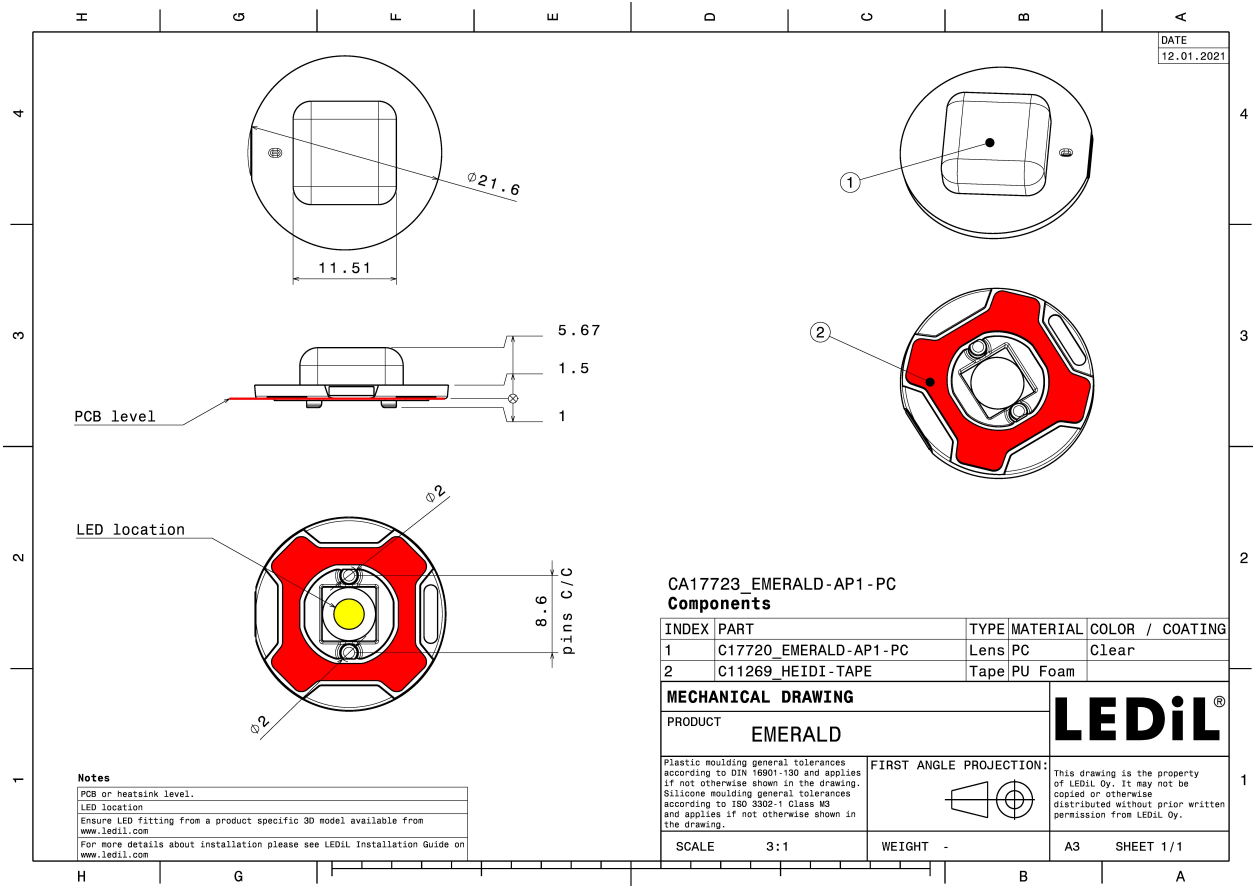


MATERIALS:

Component	Type	Material	Colour	Finish
EMERALD-AP1-PC	Single lens	PC	clear	
HEIDI-TAPE	Tape	Acrylic foam	black	

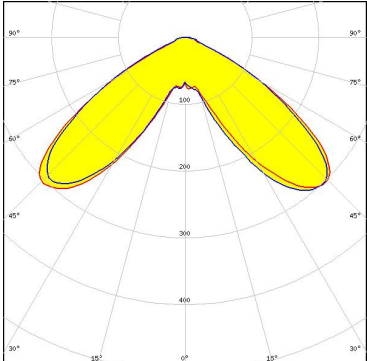
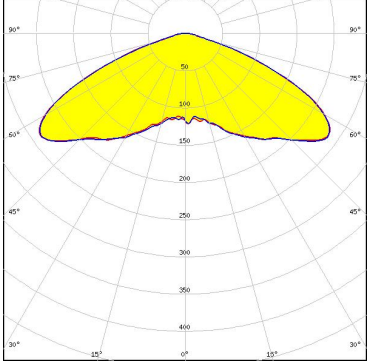
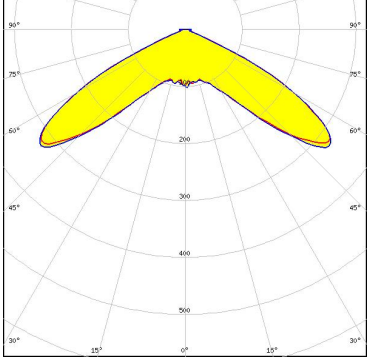
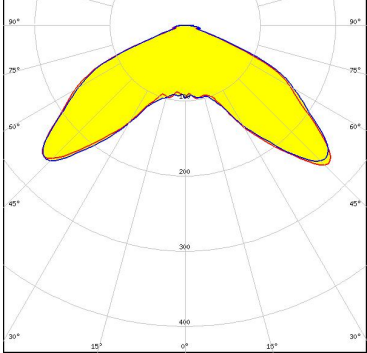
ORDERING INFORMATION:

Component	Type	Qty in box	MOQ	MPQ	Box weight (kg)
CA17723_EMERALD-AP1-PC » Box size: 480 x 280 x 300 mm	Single lens	3456	288	144	5.6



See also our general installation guide: www.ledil.com/installation_guide

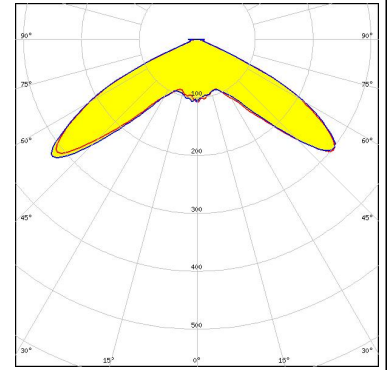
OPTICAL RESULTS (SIMULATED):

<p>CREE LEDs</p> <p>LED J Series 5050 Round LES</p> <p>FWHM / FWTM 116.0° / 136.0°</p> <p>Efficiency 91 %</p> <p>Peak intensity 0.4 cd/lm</p> <p>LEDs/each optic 1</p> <p>Light colour White</p> <p>Required components:</p>	
<p>CREE LEDs</p> <p>LED XHP35 HD</p> <p>FWHM / FWTM Asymmetric</p> <p>Efficiency 91 %</p> <p>Peak intensity 0.3 cd/lm</p> <p>LEDs/each optic 1</p> <p>Light colour White</p> <p>Required components:</p>	
<p>CREE LEDs</p> <p>LED XHP35 HI</p> <p>FWHM / FWTM Asymmetric</p> <p>Efficiency 91 %</p> <p>Peak intensity 0.4 cd/lm</p> <p>LEDs/each optic 1</p> <p>Light colour White</p> <p>Required components:</p>	
<p>CREE LEDs</p> <p>LED XHP35.2 HD</p> <p>FWHM / FWTM 128.0° / 143.0°</p> <p>Efficiency 84 %</p> <p>Peak intensity 0.3 cd/lm</p> <p>LEDs/each optic 1</p> <p>Light colour White</p> <p>Required components:</p>	

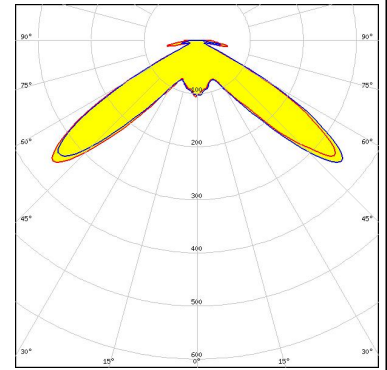
OPTICAL RESULTS (SIMULATED):



LED XP-G3
 FWHM / FWTM Asymmetric
 Efficiency 89 %
 Peak intensity 0.4 cd/lm
 LEDs/each optic 1
 Light colour White
 Required components:



LED XT-E
 FWHM / FWTM 118.0° / 155.0°
 Efficiency 89 %
 Peak intensity 0.5 cd/lm
 LEDs/each optic 1
 Light colour White
 Required components:



LED OSLOM Square CSSRM2/CSSRM3
 FWHM / FWTM Asymmetric
 Efficiency 91 %
 Peak intensity 0.5 cd/lm
 LEDs/each optic 1
 Light colour White
 Required components:

