

OLGA-WW

~60° wide beam with flange. Assembly with holder and installation tape.

SPECIFICATION:

Dimensions	Ø 32.0 mm
Height	19.1 mm
Fastening	tape, pin
ROHS compliant	yes ⓘ

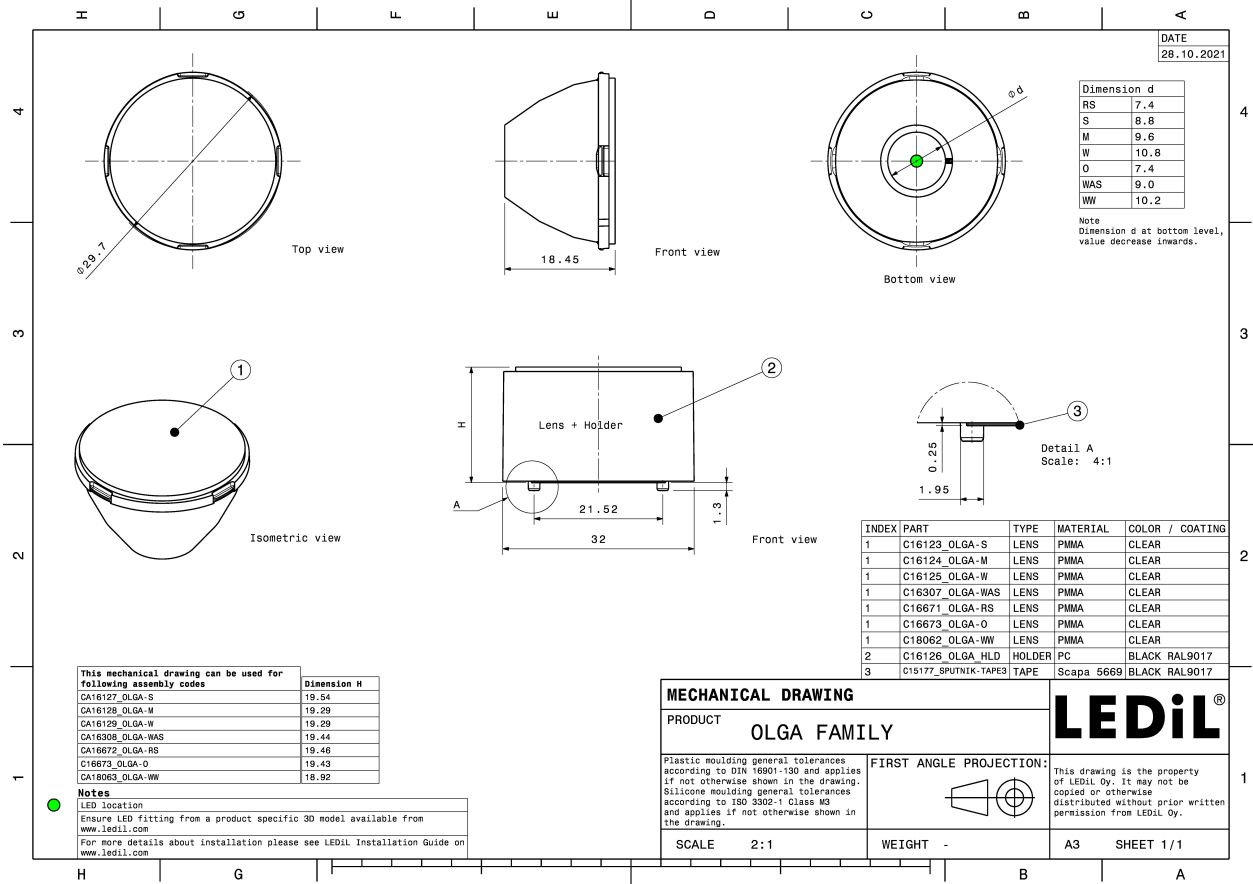
MATERIALS:

Component	Type	Material	Colour	Finish
OLGA-WW	Single lens	PMMA		
OLGA-HLD	Holder	PC	black	
SPUTNIK-TAPE3	Tape	Acrylic foam	black	

ORDERING INFORMATION:


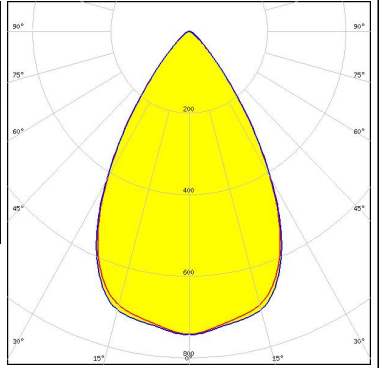
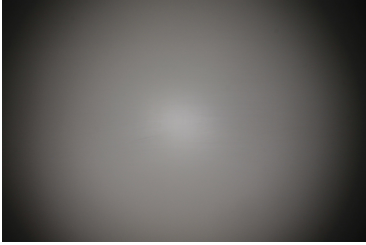
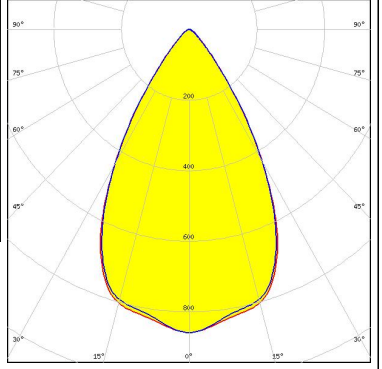
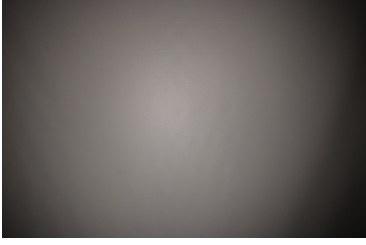
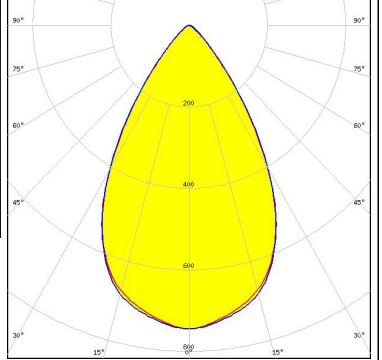
Component		Qty in box	MOQ	MPQ	Box weight (kg)
CA18063_OLGA-WW	Single lens	792	132	66	10.2
» Box size: 476 x 273 x 292 mm					





See also our general installation guide: www.ledil.com/installation_guide

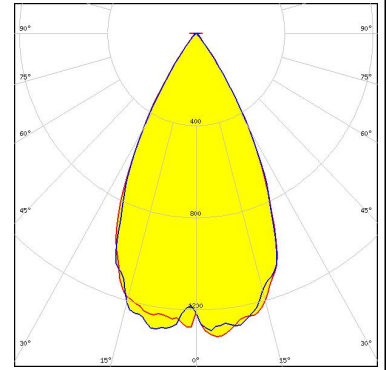
OPTICAL RESULTS (MEASURED):

<p>CREE LEDs</p> <p>LED XHP50.2 FWHM / FWTM 63.0° / 91.0° Efficiency 79 % Peak intensity 0.7 cd/lm LEDs/each optic 1 Light colour White Required components:</p>		
<p>LUMILEDS</p> <p>LED LUXEON 5050 Round LES FWHM / FWTM 60.0° / 86.0° Efficiency 83 % Peak intensity 0.9 cd/lm LEDs/each optic 1 Light colour White Required components:</p>		
<p>SEMI SEOUL SEMICONDUCTOR</p> <p>LED WICOP 5050 FWHM / FWTM 62.0° / 91.0° Efficiency 78 % Peak intensity 0.7 cd/lm LEDs/each optic 1 Light colour White Required components:</p>		

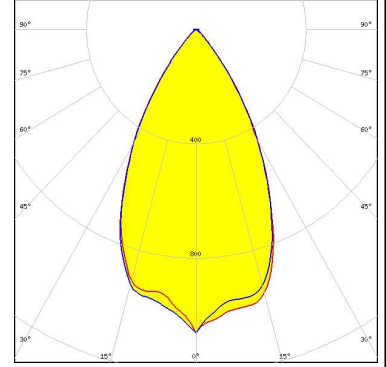
OPTICAL RESULTS (SIMULATED):



LED XP-G3
 FWHM / FWTM 54.0° / 74.0°
 Efficiency %
 LEDs/each optic 1
 Light colour White
 Required components:



LED XQ-E HI
 FWHM / FWTM 56.0° / 83.0°
 Efficiency 88 %
 Peak intensity 1.1 cd/lm
 LEDs/each optic 1
 Light colour White
 Required components:



LED CXM-3
 FWHM / FWTM 60.0° / 82.0°
 Efficiency %
 LEDs/each optic 1
 Light colour White
 Required components:

