

DATA CONTAINED IN THIS DOCUMENT IS PROPRIETARY TO TROMPETER ELECTRONICS INC. AND SHALL NOT BE DISCLOSED, COPIED OR USED FOR PROCUREMENT OR MANUFACTURE WITHOUT EXPRESS WRITTEN PERMISSION OF TROMPETER ELECTRONICS INC.

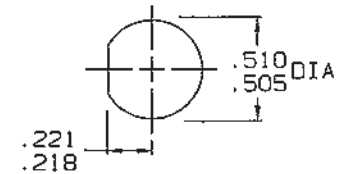
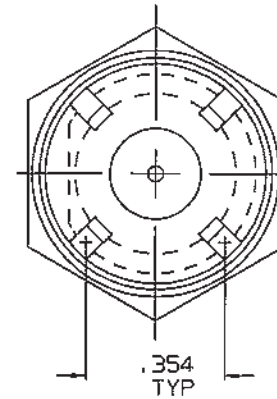
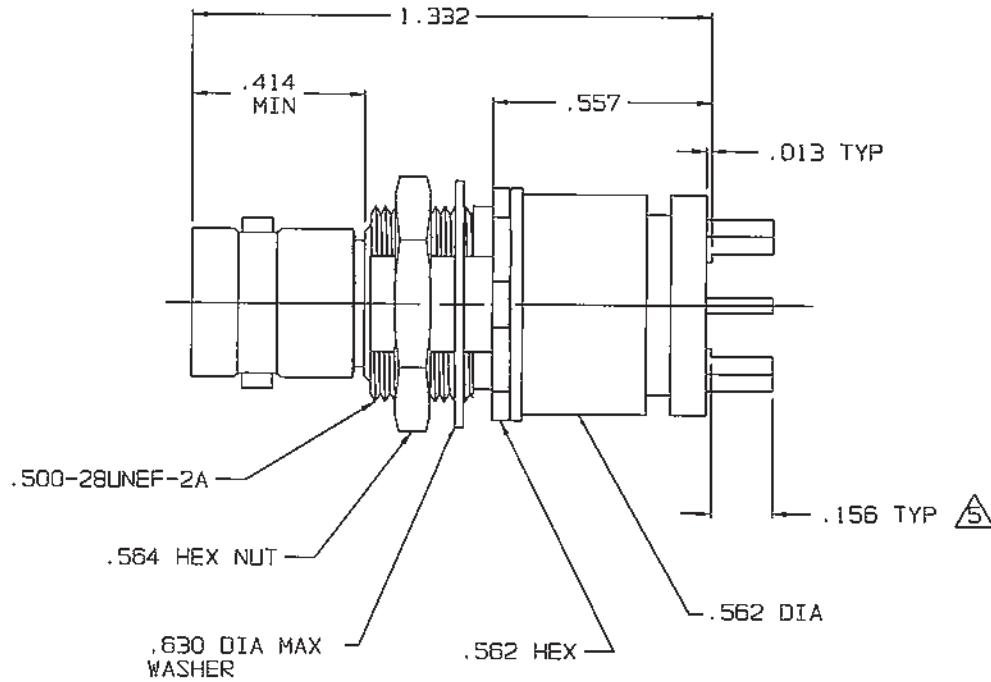
REVISIONS

105-2093

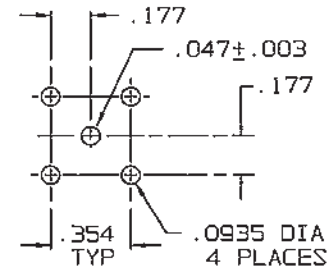
SH 1

REV	DESCRIPTION	DATE	APPROVED
A	PRODUCTION RELEASE		

RED INDICATES ORIGINAL



RECOMMENDED
 PANEL CUTOUT
 SCALE: 2/1



RECOMMENDED
 MTG HOLE PATT
 SCALE: NONE

6. DO NOT MARK THIS PART

PRE-TINNED .0015 MAXIMUM THICKNESS WITH SN63 OR EQUIV SOLDER, PER QQ-S-571, TO WITHIN .060 MAXIMUM OF SHOULDER, AFTER PLATING

4. SO DIM FOUR POST COAXIAL BNC CIRCUIT BOARD BULKHEAD MOUNT RECEPTACLE

3. MAX PANEL THK: .156

2. FINISH: TFS-1A (NICKEL)

1. ALL DIM ARE IN INCHES

INTERPRET DRAWING PER MIL-STD-100 DIMENSIONS ARE IN INCHES AND INCLUDE FINISH THICKNESS UNLESS OTHERWISE SPECIFIED		TOL: UNLESS SPECIFIED .XX ± .XXX ± .005 .XXXX ANGLES		<p>TROMPETER RF connectivity a cinch connectivity solutions brand</p>			
DRAWN R L	DATE 2/26/01	MATERIAL:				TITLE: CBBJ26 SPECIAL	
CHECKED BMash	DATE 2/26/01	FINISH:		SIZE A	CAGE CODE 14949	DRAWING NO. 105-2093	REV. A
APPROVED BMash	DATE 2/26/01	CAD FILE NO. 105-2093A1		SCALE 2/1	DATE 2/26/01	SHEET 1C	

NEXT ASSY

DO NOT SCALE DWG