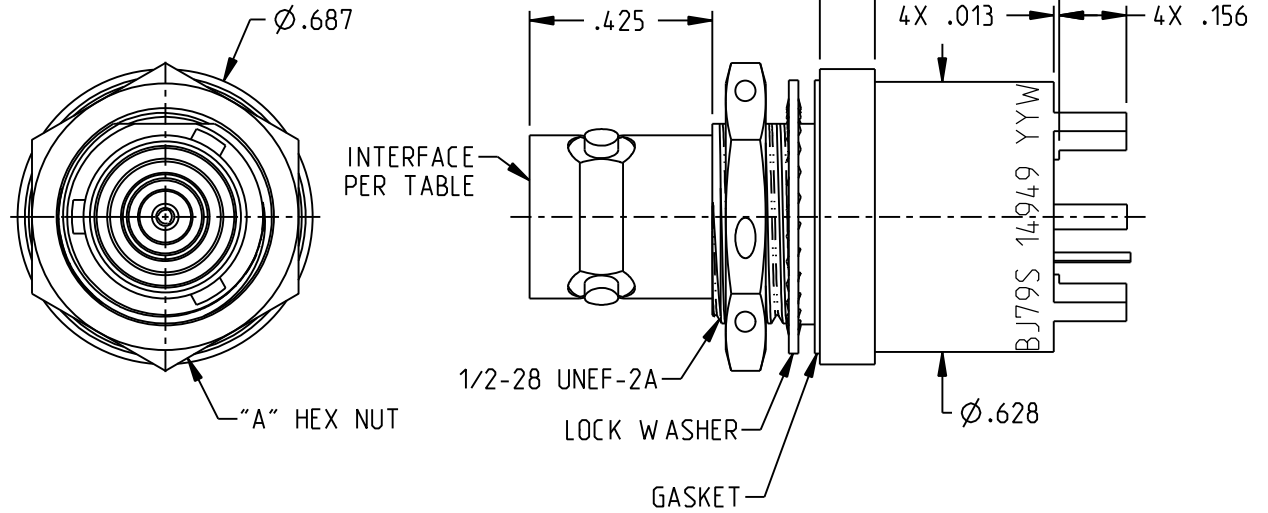


MODEL NUMBER	"A"	INTERFACE PER	SH
CBBJ79	9/16	MIL-STD-348 FIG. 201-2	1
CBBJ79S	5/8 w/3X $\phi$ .047 SAFETY WIRE HOLES		
CBBJ79TL	9/16		
CBBJ79TLS	5/8 w/3X $\phi$ .047 SAFETY WIRE HOLES		
CBBJ79FL	9/16		
CBBJ79FLS	5/8 w/3X $\phi$ .047 SAFETY WIRE HOLES		
CBBJ379	9/16	MIL-STD-348 FIG. 202-2	2
CBBJ379S	5/8 w/3X $\phi$ .047 SAFETY WIRE HOLES		
CBBJ79TL-1M	9/16	MIL-STD-348 FIG. 201-2	2
CBBJ379-1M	9/16	MIL-STD-348 FIG. 202-2	



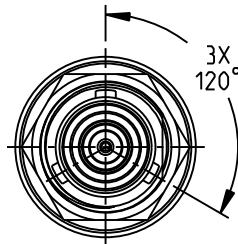
CBBJ79S SHOWN  
UNLESS SPECIFIED DIMENSIONS  
COMMON TO ALL MODEL NUMBERS

NOTES: UNLESS OTHERWISE SPECIFIED.

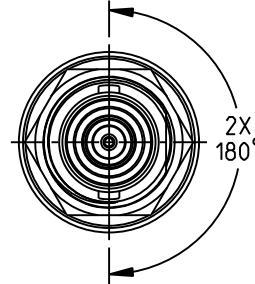
- MATERIAL & FINISH:
  - BODY: TIN PLATED BRASS
  - INSULATOR & DIELECTRIC: PTFE (TEFLON)
  - INTERMEDIATE CONTACT: GOLD PLATED BRASS
  - CENTER CONTACT: GOLD PLATED BERYLLIUM COPPER
  - GASKET: SILICONE RUBBER
  - MOUNTING HARDWARE: GOLD PLATED COPPER ALLOY

- ELECTRICAL:
  - FREQUENCY (MAX): 500 MHZ
  - IMPEDANCE: NON-CONSTANT
- PANEL NUT TORQUE (MAX): 35 INCH POUNDS
- PANEL THICKNESS (MAX): .109

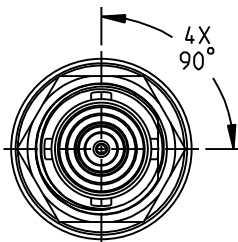
5. EXAMPLE OF COMPLETE MODEL NUMBER  
CBBJX79YYZ-AA  
S - SAFETY WIRE HOLES  
BASIC MODEL NO (PRE TABLE)



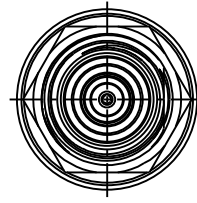
CBBJ79 SHOWN



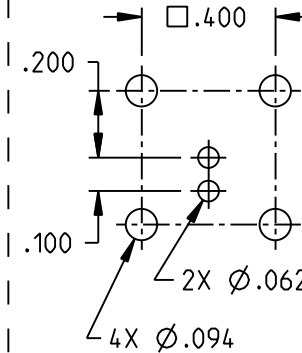
CBBJ79TL SHOWN



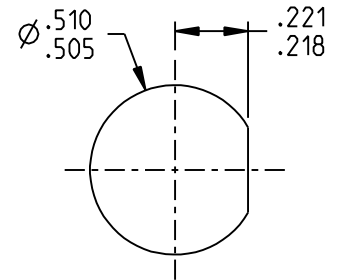
CBBJ79FL SHOWN



CBBJ379 SHOWN



RECOMMENDED  
MTG HOLE PATTERN



RECOMMENDED  
PANEL CUTOUT

	3RD ANGLE PROJECTION	TROMPETER	
	This PROPRIETARY Document is property of Cinch Connectivity Solutions. It is confidential in nature, non-transferable, and issued with the clear understanding that it is not traced or copied without permission and is returnable upon demand. INTERPRET DRAWING IN ACCORDANCE WITH ASME Y14.5-2009.	RoHS2 <input checked="" type="checkbox"/> 2015/863/EU	Title: TRB/TRT BULKHEAD CIRCUIT BOARD JACK Model No: CBBJX79YYZ
UNLESS OTHERWISE SPECIFIED UNITS: INCH .XX $\pm$ .02 .XXX $\pm$ .010 ANGLES $\pm$ 2°		Size A DO NOT SCALE DRAWING	Date: 9/22/2021 Sheet 1 OF 2