

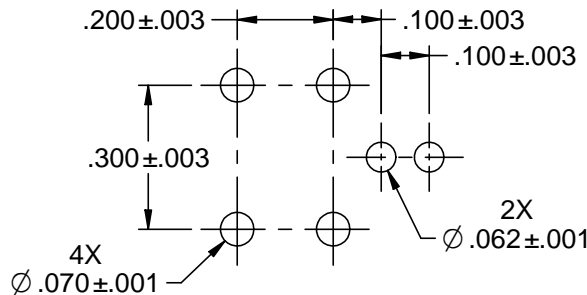
NOTES: UNLESS OTHERWISE SPECIFIED

1. MATERIALS AND FINISH
 - 1.1 BODY: TIN PLATED BRASS
 - 1.2 OUTER INSULATOR: PTFE (TEFLON)
 - 1.3 INTERMEDIATE CONTACT: GOLD PLATED BRASS
 - 1.4 DIELECTRIC: PTFE (TEFLON)
 - 1.5 CENTER CONTACT: GOLD PLATED BERYLLIUM COPPER
 - 1.6 MOUNTING HARDWARE: TIN PLATED COPPER ALLOY
 - 1.7 GASKET: SILICONE RUBBER

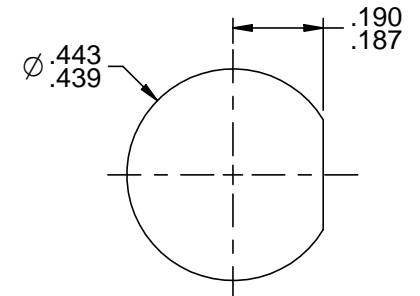
2. ELECTRICAL:
 - 2.1 IMPEDANCE: NON-CONSISTANT
 - 2.2 FREQUENCY (MAX): 500 MHz

3. PANEL NUT TORQUE (MAX): 30 INCH POUNDS

4. PANEL THICKNESS (MAX): .125



RECOMMENDED MTG HOLE PATTERN



RECOMMENDED PANEL CUTOUT

	3RD ANGLE PROJECTION 	<h3>Trompeter</h3>	
	RoHS2 <input checked="" type="checkbox"/> 2011/65/EU	Title: TRS, RIGHT ANGLE, BULKHEAD CIRCUIT BOARD JACK	
<small>This PROPRIETARY Document is property of Cinch Connectivity Solutions. It is confidential in nature, non-transferable, and issued with the clear understanding that it is not traced or copied without permission and is returnable upon demand.</small> <small>INTERPRET DRAWING IN ACCORDANCE WITH ASME Y14.5-2009.</small>	UNLESS OTHERWISE SPECIFIED UNITS: INCH .XX ±.02 .XXX ±.005 ANGLES ±2°	Model No. <h3>CBBJR159</h3>	
	Size A	DO NOT SCALE DRAWING	Date: 7/8/2014