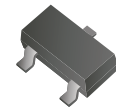


## CDBT0540-G

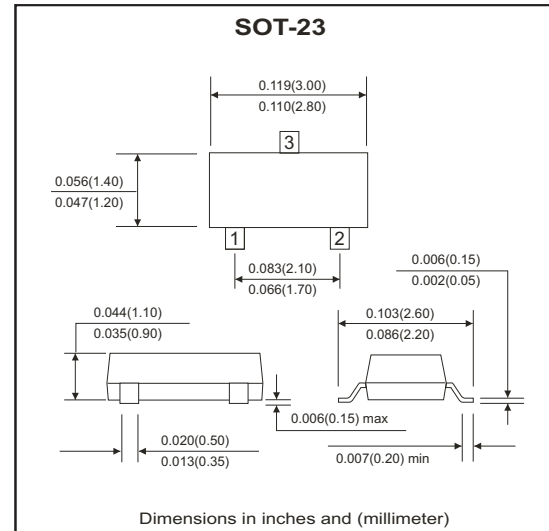
RoHS Device



### Features

- Small surface mount type.
- Low reverse current and low forward voltage.
- High reliability.

### Marking: D3A



### Maximum Ratings (at Ta=25°C unless otherwise noted)

Parameter	Symbol	Value	Unit
Peak reverse voltage	$V_{RM}$	40	V
DC reverse voltage	$V_R$	40	V
Peak surge forward voltage	$I_{FSM}$	3	A
Mean rectifying current	$I_o$	0.5	A
Power dissipation	$P_D$	250	mW
Thermal resistance, junction to ambient	$R_{\theta JA}$	500	°C/W
Junction temperature	$T_J$	125	°C
Storage temperature	$T_{STG}$	-40 to +125	°C

### Electrical Characteristics (at Ta=25°C unless otherwise noted)

Parameter	Symbol	Conditions	Min	Typ.	Max	Unit
Reverse breakdown voltage	$V_{BR}$	$I_R=100\mu A$	40			V
Forward voltage	$V_F$	$I_F=500mA$			0.55	V
Reverse current	$I_R$	$V_R=10V$			30	$\mu A$
		$V_R=30V$			50	$\mu A$
Capacitance between terminals	$C_T$	$V_R=0V, f=1MHz$		125		pF
		$V_R=10V, f=1MHz$		20		pF

## RATING AND CHARACTERISTIC CURVES (CDBT0540-G)

Fig.1 Forward Characteristics

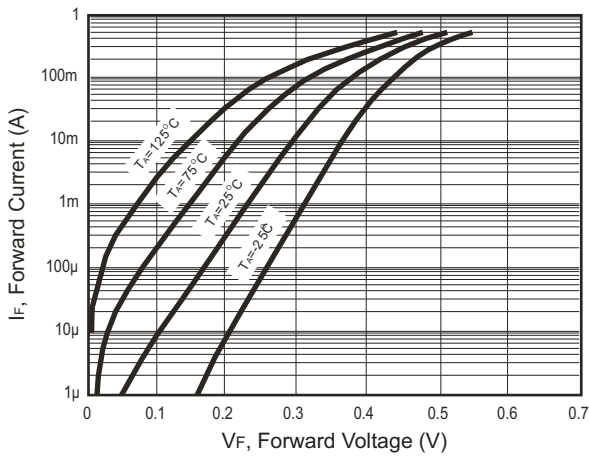


Fig.2 Reverse Characteristics

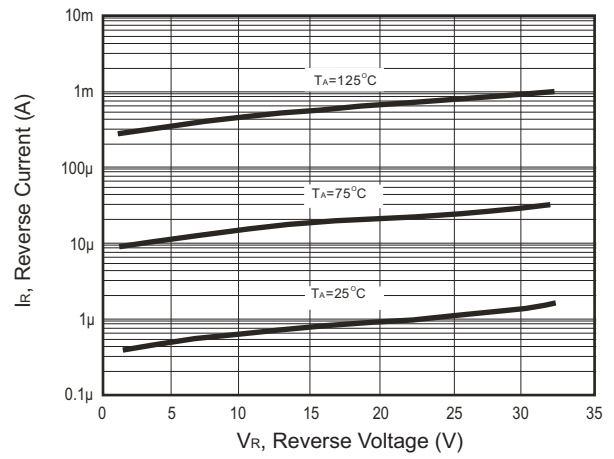


Fig.3 Capacitance Between Terminals Characteristics

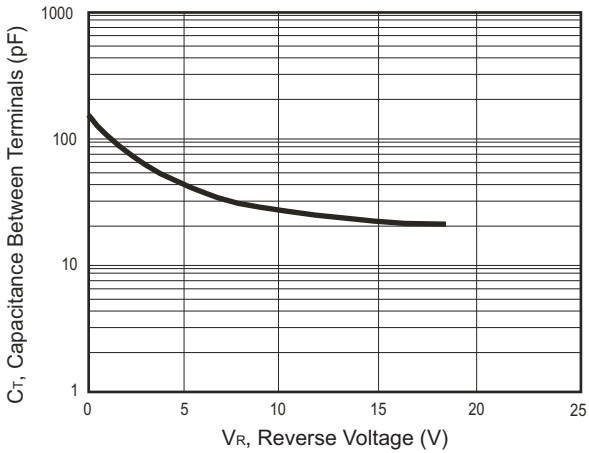


Fig.4 Power Derating Curve

