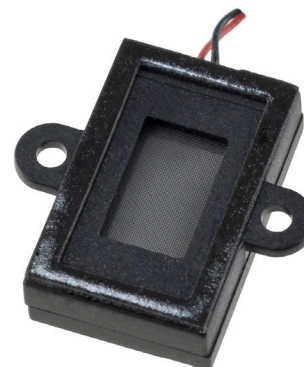


**SERIES:** CES-20134-088PM | **DESCRIPTION:** SPEAKER**FEATURES**

- 0.8 W power rating
- dust proof mesh
- 60 mm lead wire
- 2 panel mount flanges
- wire leads with connector options

**SPECIFICATIONS**

parameter	conditions/description	min	typ	max	units
input power	max power: 1 second on, 59 seconds off, 60 cycles		0.8	1.0	W
impedance	at 2.0 kHz, 2.53 Vrms	6.4	8	9.6	$\Omega$
resonant frequency (Fo)	at 2.53 Vrms, 10 cm	1,040	1,300	1,560	Hz
frequency response	as per IEC 268-5	500		20,000	Hz
sound pressure level	at 0.8 W, 10 cm, avg at 1.1, 1.3, 1.5 & 2 kHz	88	91	94	dB
distortion	at 2.0 kHz, rated power, 10 cm			10	%
buzz, rattle, etc.	must be normal at sine wave, frequency range			2.53	V
polarity	cone moves forward w/ positive dc current to "+" terminal				
dimensions	20 x 13 x 4.87				mm
magnet	Nd-Fe-B				
enclosure material	ABS+PC				
cone material	PEEK				
terminal	wire leads				
weight		1.5	2	2.5	g
operating temperature		-20		70	$^{\circ}$ C
storage temperature		-40		85	$^{\circ}$ C
RoHS	yes				

Notes: 1. All specifications measured at 15~35 $^{\circ}$ C, humidity at 25~75%, under 86~106 kPa pressure, unless otherwise noted.

**PART NUMBER KEY****CES-20134-088PM X**

Base Number

Termination Options:

"blank" = wire leads, no connector

A = wire leads with Molex housing 51021-0200

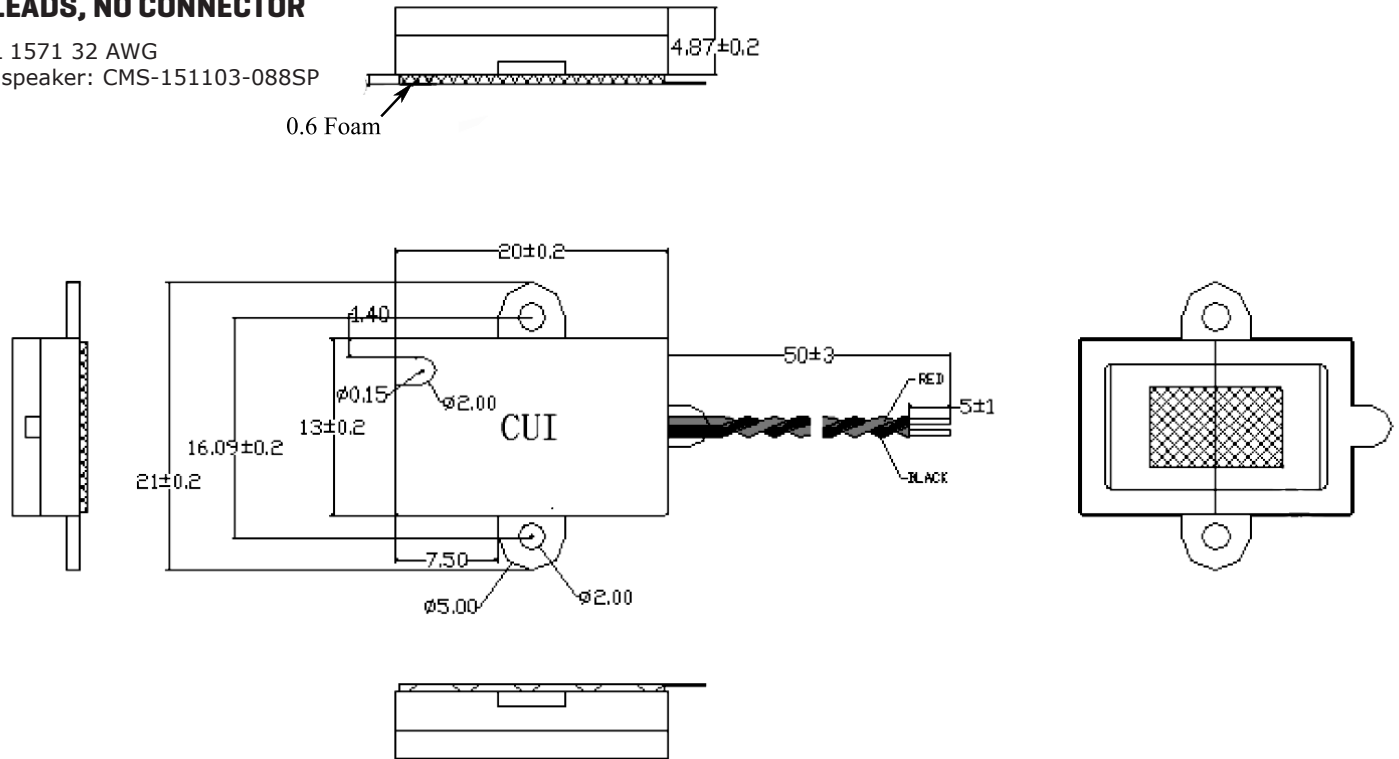
B = wire leads with JST housing SHR-02V-S-B

## MECHANICAL DRAWINGS

units: mm  
tolerance:  $\pm 0.2$  mm

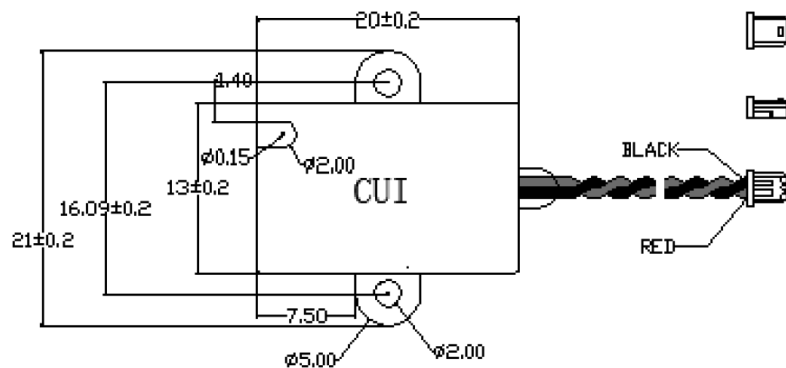
### WIRE LEADS, NO CONNECTOR

wire: UL 1571 32 AWG  
internal speaker: CMS-151103-088SP



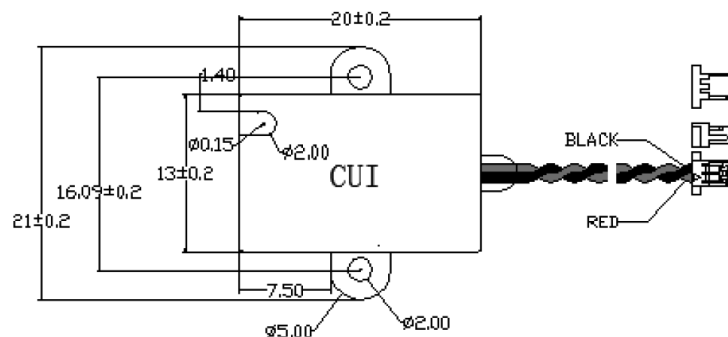
### WIRE LEADS WITH MOLEX CONNECTOR

wire: UL 1571 30 AWG  
connector: Molex 51021-0200  
mating connector: Molex 53261-0271  
internal speaker: CMS-151103-088SP



### WIRE LEADS WITH JST CONNECTOR

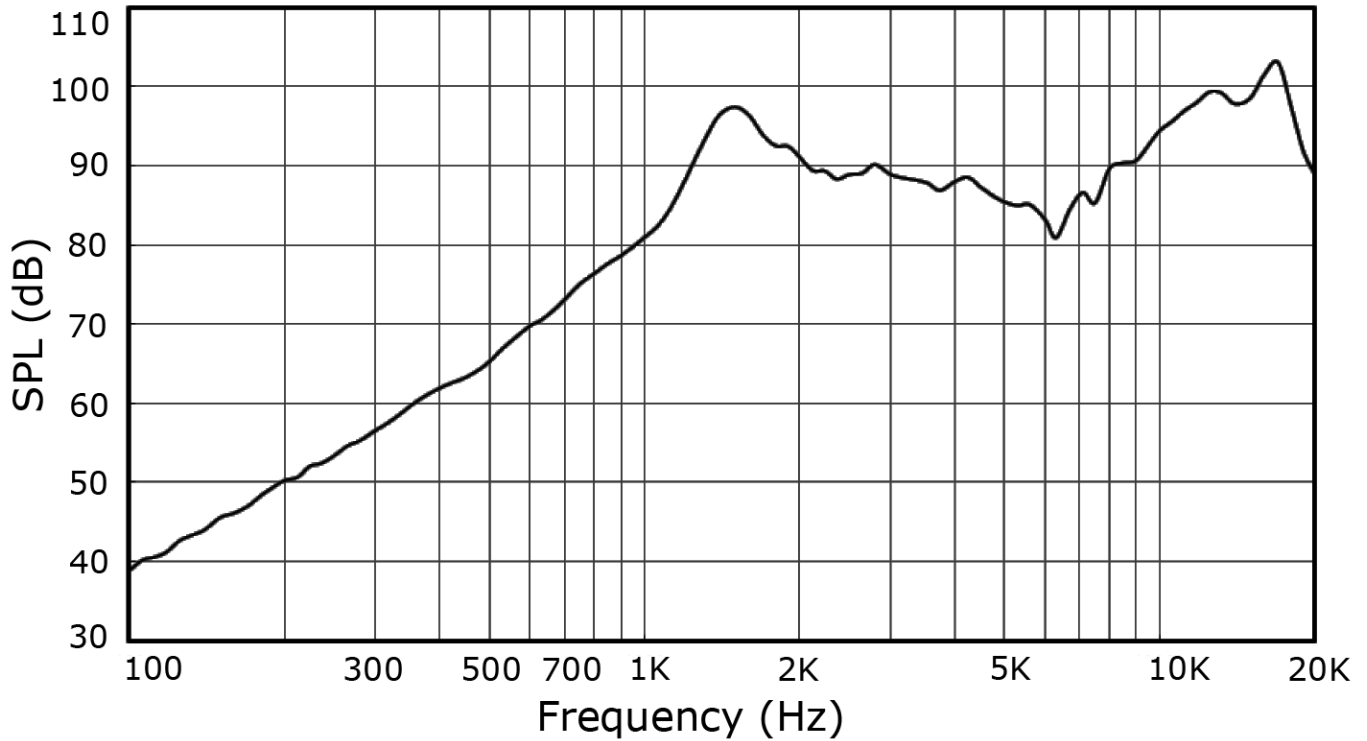
wire: UL 1571 30 AWG  
connector: JST SHR-02V-S-B  
mating connector: JST BM02B-SRSS-TB  
internal speaker: CMS-151103-088SP



## RESPONSE CURVES

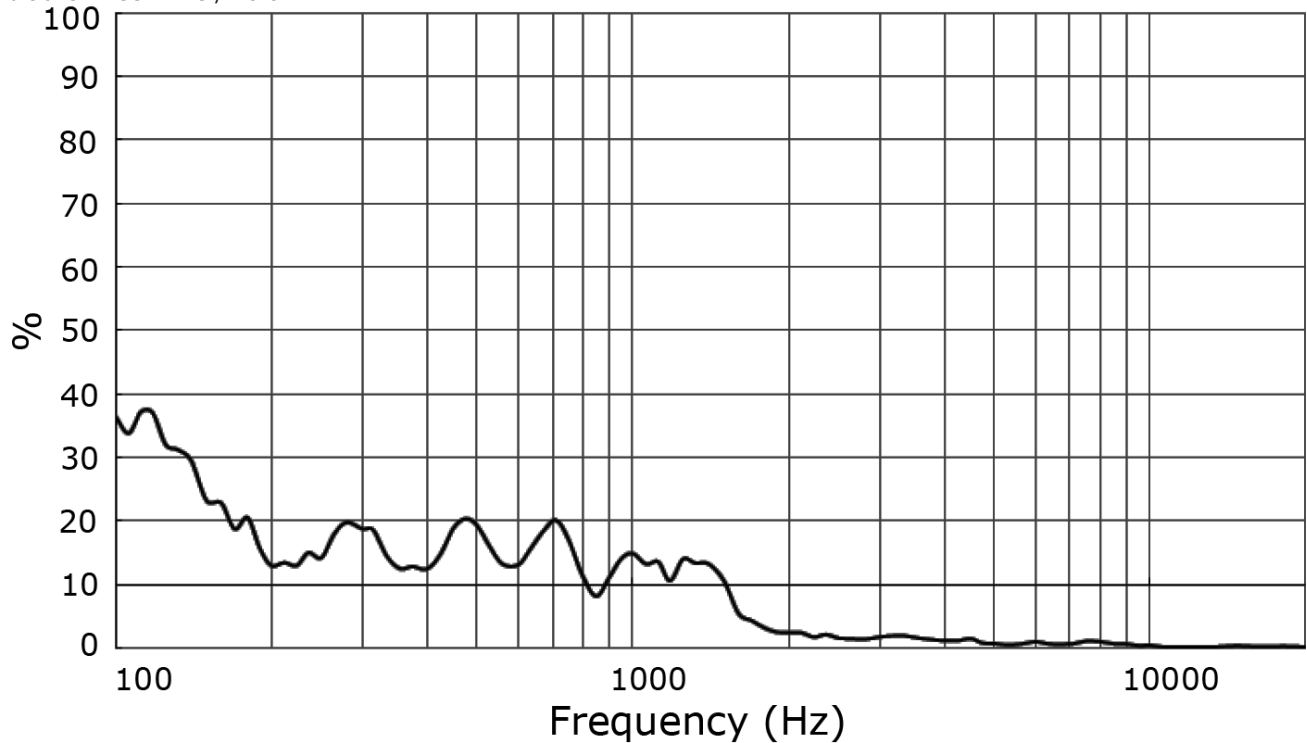
### Frequency Response Curve

Test Conditions: 2.53 Vrms / 10 cm



### Total Harmonic Distortion Curve

Test Conditions: 2.53 Vrms / 10 cm



## PACKAGING

units: mm

Tray QTY: 80 pcs per tray  
 Carton Size: 480 x 350 x 450 mm  
 Carton QTY: 2,000 pcs per carton

