

20 dB, Bi Directional Coupler 1-1000MHz

Rev. V3

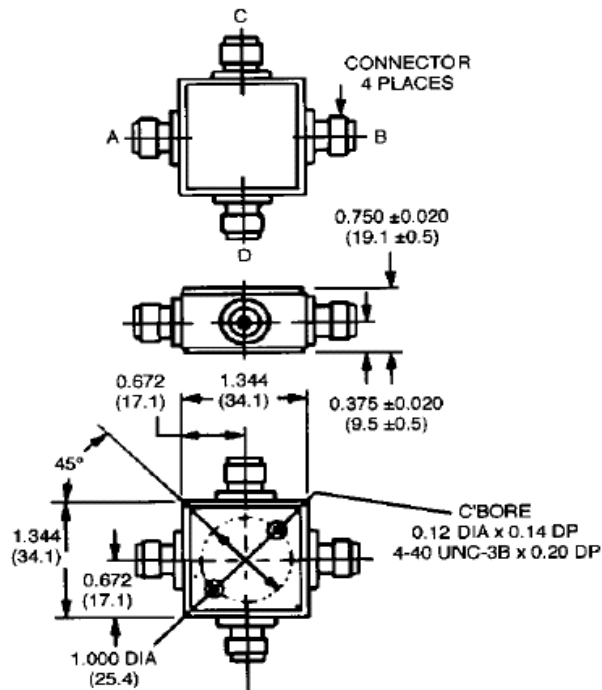
Features

- Broad Frequency Range
- Constant Coupling—Within ± 0.5 dB Max
- VSWR: 1.3:1 Max
-

C-8

Description

Bi-Directional Couplers offer the ability to couple the power in two directions while maintaining directivity.



Dimensions in () are in mm.
Unless Otherwise Noted: .xxx = ± 0.015 (x = ± 0.4)
WEIGHT (APPROX.): 2.5 OUNCES 71 GRAMS

Electrical Specifications¹: $T_A = -55^\circ\text{C}$ to $+85^\circ\text{C}$

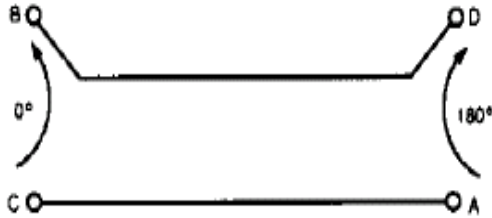
Parameter	Test Conditions	Frequency	Units	Min	Typ	Max
Coupling	Input to Output	1-1000 MHz	dB	19.0	20.0	21.0
Coupling Flatness	—	10 - 500 MHz	dB	—	—	± 0.25
		1 - 1000 MHz	dB	—	—	± 0.5
VSWR	All Ports	10 - 500 MHz	Ratio	—	—	1.2:1
		1 - 1000 MHz	Ratio	—	—	1.3:1
Directivity	Both Directions	10 - 500 MHz	dB	25	—	—
		1 - 1000 MHz	dB	20	—	—
Main Line Loss ²	—	10 - 500 MHz	dB	—	—	0.5
		1 - 1000 MHz	dB	—	—	0.7

1. All specifications apply with 50 ohm source and load impedance.

2. Includes theoretical power split.

This product contains elements protected by United States Patent number 3,426,298.

Functional Diagram



Ordering Information

Part Number	Package
CH-132 BNC	Connectorized
CH-132 N	Connectorized
CH-132 SMA	Connectorized
CH-132 TNC	Connectorized

Typical Performance Curves

