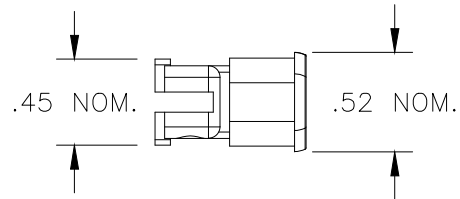
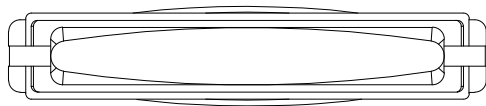
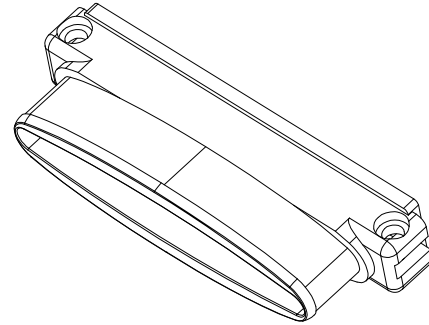
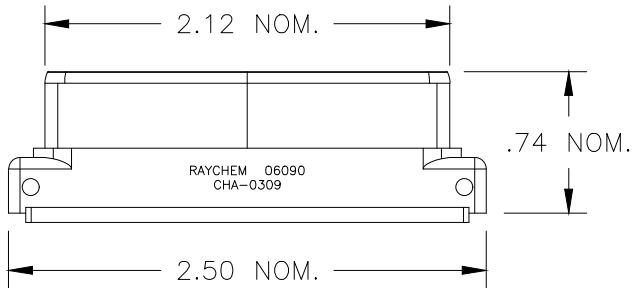


REVISION		
REV	DESCRIPTION	DATE
A	INITIAL RELEASE PER DCR NUMBER C040785	09JUL2004
B	REVISE PER DCR# C050016	JAN-17-05
C	REVISED PER ECO-19-009004	JUL-15-19



NOTES:

- APPLICATION: FOR USE ON 2" MTC SHELLS, ELECTROLESS NICKEL PLATED.
- BODY: ALUMINUM, ELECTROLESS NICKEL PLATE PER RAYCHEM ES 61400/16.
- BANDSTRAP (NOT SHOWN): CRES-Lock BND-1225, CRES, PASSIVATED.
- SCREWS (NOT SHOWN): 4-40 SOCKET HEAD CAP SCREW, CRES, PASSIVATED, SELF-LOCKING.
- MARKINGS: BLACK INK.
- MEETS APPLICABLE REQUIREMENTS OF RAYCHEM SPECIFICATION C-6114.
- WEIGHTS:  
 BACKSHELL: 10.2gm (NOM)  
 SCREWS (2): 1.2gm (NOM), TOTAL  
 BANDSTRAP (INSTALLED): 7.5gm (NOM)

© 2004-2005 TYCO ELECTRONICS CORPORATION. ALL RIGHTS RESERVED.

IF THIS DOCUMENT IS PRINTED IT BECOMES UNCONTROLLED.  
 CHECK FOR THE LATEST REVISION.

UNLESS OTHERWISE SPECIFIED DIMENSIONS ARE INCHES. METRIC DIMENSIONS ARE IN BRACKETS.		DRAWN	DATE	SPECIFICATION CONTROL DRAWING	
DECIMAL TOLERANCES .XXX ± 0.005 [ 0.13 mm] .XX ± 0.010 [ 0.25 mm] .X ± 0.020 [ 0.50 mm]		T RATZLAFF	09JUL2004	<b>tyco</b> Electronics	TYCO ELECTRONICS 300 CONSTITUTION DRIVE MENLO PARK, CA 94025
ANGLE TOLERANCE .X ± 0.5 DEG.		MATERIAL SEE NOTES		Raychem	
WEIGHT, INSTALLED (NOM) LBS. 0.0417 [ 18.9 gm]		FINISH SEE NOTES		TITLE 2" MTC BACKSHELL ADAPTER, CRES-Lock BAND	
THIRD ANGLE PROJECTION		SIZE A	CAGE CODE 06090	DWG. NO. CHA-0309	
CAD FILE C050016.DWG		DO NOT SCALE THIS DRAWING			SHEET 1 OF 1

© 2004-2005 TYCO ELECTRONICS CORPORATION. ALL RIGHTS RESERVED.