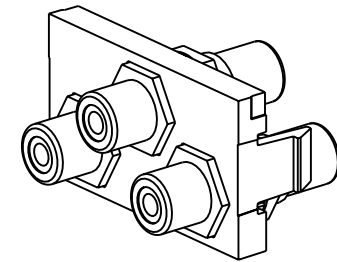
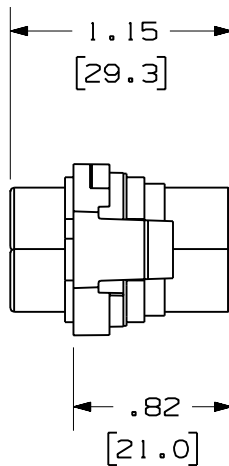
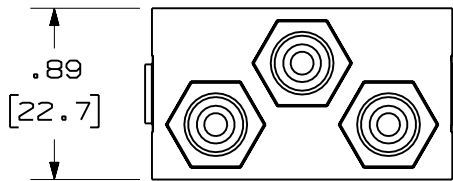
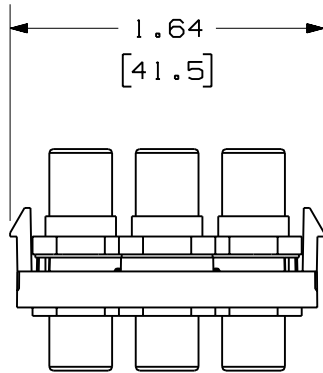


THIS COPY IS PROVIDED ON A RESTRICTED BASIS AND IS NOT TO BE USED IN ANY WAY DETRIMENTAL TO THE INTERESTS OF PANDUIT CORP.




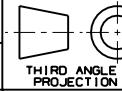
| PANDUIT P/N | WEIGHT           |
|-------------|------------------|
| CHR3WYR**   | .78 LB/10 PCS    |
| CHR3RGB**   | (353.5 g/10 PCS) |

NOTES:

- SEE CURRENT CATALOG FOR ADDITIONAL PART NUMBER SUFFIXES TO INDICATE COLOR AND OR PACKAGE QUANTITY.
- SEE CATALOG FOR COMPLETE LIST OF PARTS APPLICABLE FOR USE WITH THIS PART.
- DIMENSIONS IN PARENTHESES ARE IN METRIC.
- PART INCLUDES:  
 CHR3WYR\*\* -  
 1- 1/3 INSERT BASE  
 1- WHITE RCA COUPLER (ASSEMBLED)  
 1- YELLOW RCA COUPLER (ASSEMBLED)  
 1- RED RCA COUPLER (ASSEMBLED)  
 CHR3RGB\*\* -  
 1- 1/3 INSERT BASE  
 1- RED RCA COUPLER (ASSEMBLED)  
 1- GREEN RCA COUPLER (ASSEMBLED)  
 1- BLUE RCA COUPLER (ASSEMBLED)

|                  |                            |      |   |
|------------------|----------------------------|------|---|
| MODEL FILENAME   | MO2190AC_13RD_RCAX3_01.PRT | SIZE | A |
| DRAWING FILENAME | MO2190AC_DC_01A.PRT        |      |   |

1/3 INSERT WITH 3 RCA COUPLERS  
CUSTOMER DRAWING

|   |  |                                    |
|---|--|------------------------------------|
|  <b>PANDUIT</b> ™<br>CORP.<br>TINLEY PARK, ILL 60477 | I.I. NUMBER                                | N/A                                |
|   | PRODUCT SPEC                               | N/A                                |
|  THIRD ANGLE<br>PROJECTION                           | WORK INSTRUCTION                           | N/A                                |
|   | SCALE                                      | NONE                               |
| DRAWN BY<br>JsP   | REVIEW DRAWING NUMBERS                     | PART NO.<br>CHR3WYR**<br>CHR3RGB** |
| DATE<br>4-4-06  | MATERIAL:<br>INSERT- ABS<br>COUPLER- BRASS | DRAWING NO.<br>02190-10            |
| CHK'D   |  |                                    |

| REV | DATE   | BY  | CHK | DESCRIPTION            | ECN      | R | CUST | SUP | OTH |
|-----|--------|-----|-----|------------------------|----------|---|------|-----|-----|
| R   | 4-4-06 | JsP |     | RELEASED TO PRODUCTION | 02190-10 |   |      |     |     |