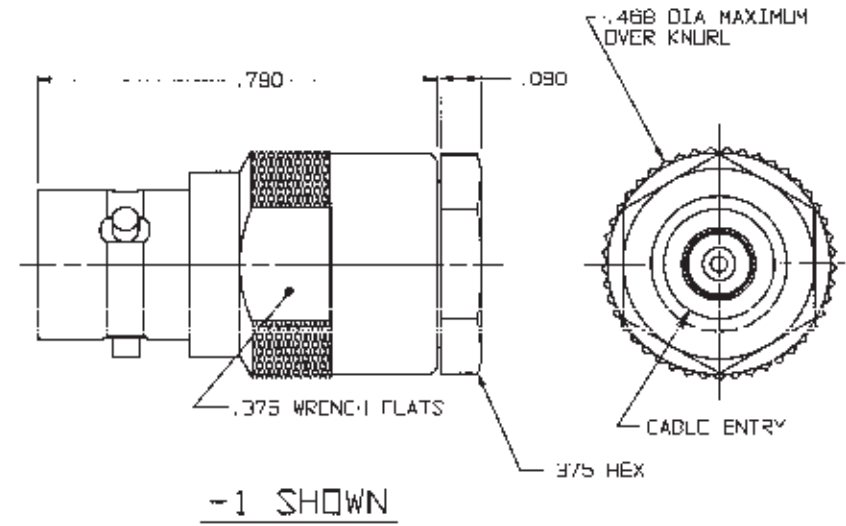
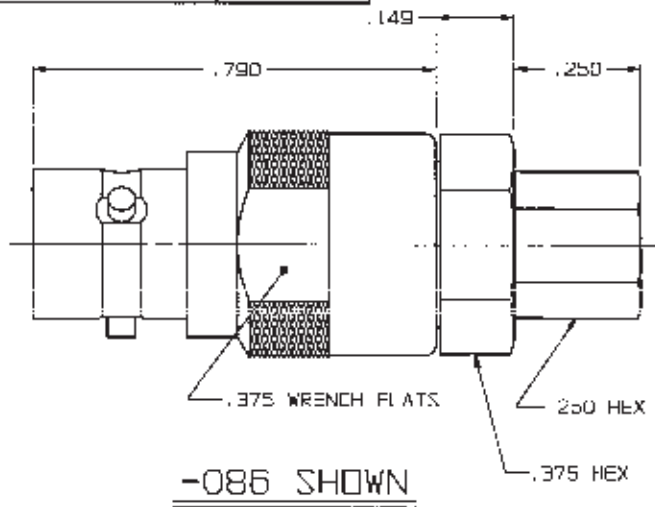


# RED INDICATES ORIGINAL

| CASH NO | CABLES ACCOMMODATED   | ASSEMBLY PER | INLH | MM    |
|---------|---|--------------|------|-------|
| -1      | RG-58   | TAI-135      | .005 | 0.13  |
| -2      | RG-59   |              | .060 | 2.03  |
| -2A     | B279 BELDEN   |              | .149 | 3.78  |
| -2B     | 730A AT&T <span style="border: 1px solid black; padding: 1px;">4</span> | TAI-10B      | .250 | 6.35  |
| -3      | RG-223  | TAI-135      | .375 | 9.53  |
| -4      | RG-122  |              | .468 | 11.89 |
| -5      | RG-174  |              | .790 | 20.07 |
| -5A     | RG-196  |              |      |       |
| -22     | RG-180  |              |      |       |
| -31     | GRIMMAN GCR755P:  | TAI-130      |      |       |
| -36     | CXN1362; GDRE   |              |      |       |
| -086    | RG-405  |              |      |       |
| -141    | RG-402  |              |      |       |

DWG SIZE: **B**  
 DATA CONTAINED IN THIS DOCUMENT IS PROPRIETARY TO TROMPETER ELECTRONICS, INC. AND SHALL NOT BE DISCLOSED, COPIED OR USED FOR PROCUREMENT OR MANUFACTURE WITHOUT EXPRESS WRITTEN PERMISSION.

| REVISIONS |       |   | 1-0137 |                    | SH 1     |
|-----------|-------|---|--------|--------------------|----------|
| RCV       | ECO   | DESCRIPTION   | DWN    | APPROVED           | DATE     |
| M         | 118/5 | REVISED, REDRAWN AND GENERAL UPDATE. ADDED -36; DRAWING NUMBER WAS 1000-0137, SEE ECO | DKC    | <i>[Signature]</i> | 10/12/86 |



- 4 NOT WRENCH CRIMP
3. FEMALE TYPE TPS COAXIAL JACK
  2. FINISH: TFS-1A (NICKEL)
  1. ALL DIMENSIONS ARE IN INCHES

| QTY  | DESCRIPTION   | PART NUMBER  | ITEM         |
|--|---|--------------|--------------|
| TOL UNLESS SPECIFIED<br>.XX ±<br>.XXX ±.005<br>.XXXX ±<br>ANGLES | <b>TROMPETER</b><br>RF connectivity<br><small>a rf connectivity solutions brand</small> | CJ50         |              |
| DWN  | DKC 10-11-86  | MATERIAL     | CODE ICENT   |
| CHK  | <i>[Signature]</i> 10-23-86   |              | 14949        |
| ENGR   |   | DRAWING NO.  | REV          |
| APPR   | <i>[Signature]</i> 10/25/86   | 1-0137       | M            |
| NEXT ASSY  | SCALE 4/1   | DATE 1-17-86 | SHEET 1 OF 2 |