

Product data sheet

Characteristics

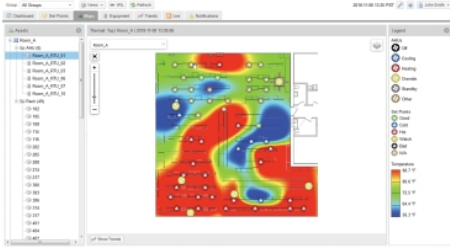
CLPRESSURE

Data Center Operation: Cooling Optimize Pressure Sensor



Overview

Lead time Usually in Stock



Offer Sustainability

EU RoHS Directive

Under investigation

WEEE

The product must be disposed on European Union markets following specific waste collection and never end up in rubbish bins.

The information provided in this documentation contains general descriptions and/or technical characteristics of the performance of the products contained herein. This documentation is not intended as a substitute for and is not to be used for determining suitability or reliability of these products for specific user applications. It is the duty of any such user or integrator to perform the appropriate and complete risk analysis, evaluation and testing of the products with respect to the relevant specific application or use thereof. Neither Schneider Electric Industries SAS nor any of its affiliates or subsidiaries shall be responsible or liable for misuse of the information contained herein.