

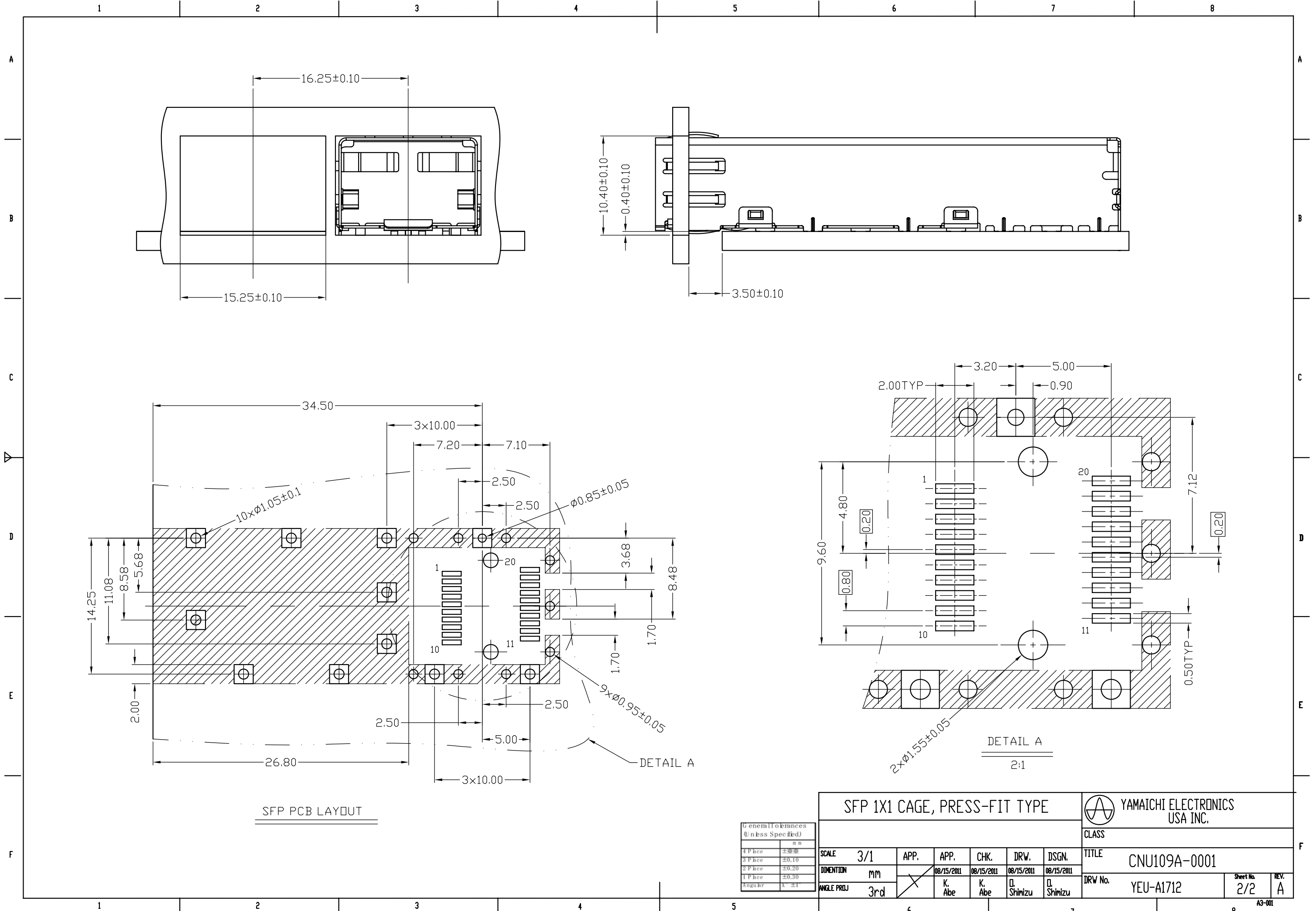
7		8			
REVISION DESCRIPTION	APP.	DRW.	DATE	CHANGE No.	
△ X					
△ X					
△ X					

NOTE:

1. MATERIAL:
CAGE ASSEMBLY: COPPER ALLOY.
2. MATES WITH SFP MSA COMPLIANT TRANSCEIVERS.
3. MINIMUM PC BOARD THICKNESS:
SINGLE SIDED = 1.50mm
4. THIS PART MEETS THE RESTRICTION OF HAZARDOUS
SUBSTANCES IN ELECTRICAL AND ELECTRONIC EQUIPMENT
(ROHS) DIRECTIVE (2002/95/EC).

General Tolerances (Unless Specified)	
4 Place	±0.20
3 Place	±0.10
2 Place	±0.20
1 Place	±0.30
Angular	±1°

SFP 1X1 CAGE, PRESS-FIT TYPE						YAMAICHI ELECTRONICS USA INC.	
SCALE 3/1						CLASS	
DIMENSION M/M						TITLE CNU109A-0001	
ANGLE PROJ 3rd						DRW No. YEU-A1712	
APP.	APP.	CHK.	DRW.	DSGN.	Sheet No.	REV.	
K. Abe	K. Abe	K. Abe	D. Shimizu	D. Shimizu	1/2	A	



SFP PCB LAYOUT

DETAIL A
2:1

General Tolerances (Unless Specified)	
1 Place	±0.10
2 Place	±0.20
3 Place	±0.30
Angular	±1°

SFP 1X1 CAGE, PRESS-FIT TYPE							YAMAICHI ELECTRONICS USA INC.	
CLASS							TITLE	
SCALE 3/1							CNU109A-0001	
APP. APP. CHK. DRW. DSGN.							DRW No.	
DIMENSION mm							YEU-A1712	
ANGLE PROJ 3rd							Sheet No. 2/2	
08/15/2011 08/15/2011 08/15/2011 08/15/2011							REV. A	
K. Abe K. Abe O. Shimizu O. Shimizu							A3-001	