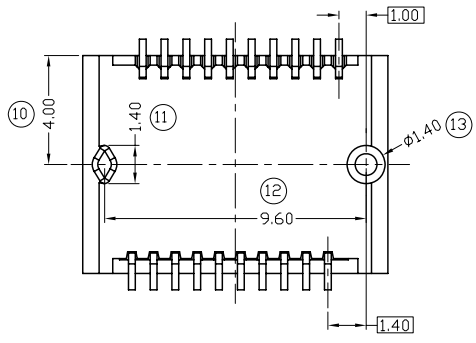
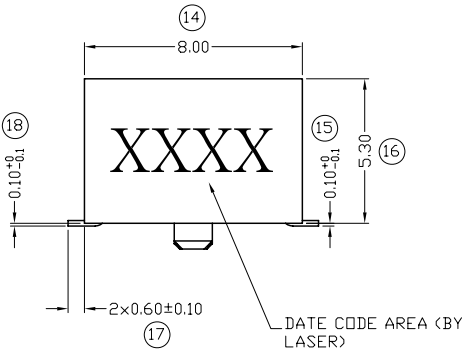
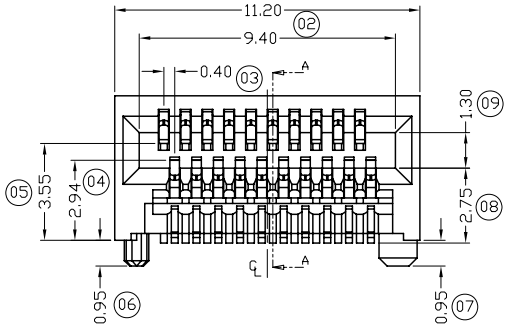
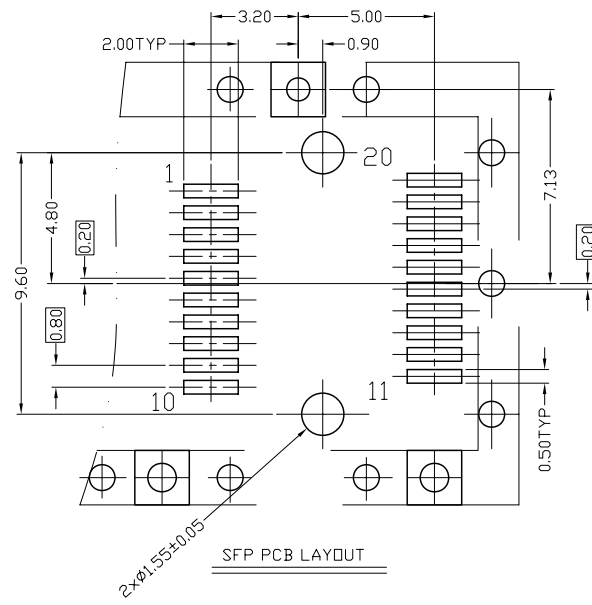
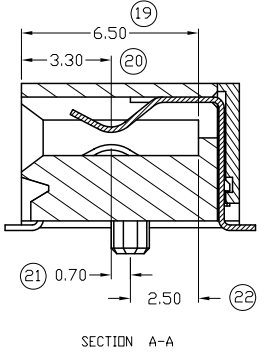
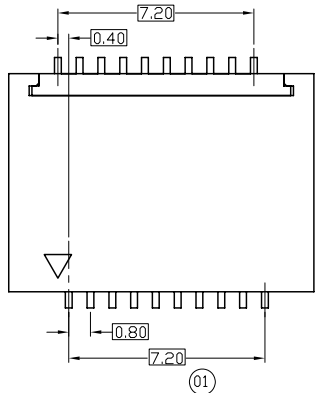


| REVISION DESCRIPTION | | APP. | DRW. | DATE | CHANGE No. |
|----------------------|-----------------|------|------|----------|------------|
| △ x 1 | Change the note | H.T. | O.S. | 11/24/25 | DC15-0051 |
| △ x | | | | | |
| △ x | | | | | |



SPECIFICATIONS
MATERIALS AND FINISHES:
INSULATOR: THERMOPLASTIC, UL94 V-0.
CONTACTS: COPPER ALLOY.
FUNCTION AREA PLATING: Au 15u" OVER Ni; TAIL AREA PLATING: Sn OVER Ni.
MECHANICAL:
DURABILITY: 250 CYCLES
INSERTION/EXTRACTON FORCE: 40N MAX. / 11.5N MAX.
PHYSICAL:
OPERATING TEMPERATURE:-55°C TO +85°C
ELECTRICAL:
CONTACT RESISTANCE: 20m Ohms MAX.
VOLTAGE RATING: 30V AC RMS MAX.
INSULATION RESISTANCE: 1000M Ohms Min.
CURRENT RATING: 0.5 A MAX.
RoHS DIRECTIVE COMPLIANCE<LEAD-FREE> REFLOW CAPABLE TO 260±10°C,10SEC

| General Tolerances (Unless Specified) | |
|---------------------------------------|-------|
| 4 Place | ±0.30 |
| 3 Place | ±0.10 |
| 2 Place | ±0.20 |
| 1 Place | ±0.30 |
| Angular | ±0.5 |

| SFP+ CONNECTOR, 20P, SMT, Au, 15u" | | | | | | | YAMAICHI ELECTRONICS USA INC. | |
|------------------------------------|-----|------|------|------|------|-------|-------------------------------|------|
| CLASS | | | | | | | | |
| TITLE | | | | | | | CNU109S-020-0010 | |
| DRW No. | | | | | | | YEU-A1711 | |
| SCALE | 5/1 | APP. | APP. | CHK. | DRW. | DSGN. | Sheet No. | REV. |
| DURATION | MM | | | | | | 1/1 | B |
| ANGLE PROJ | 3rd | | | | | | | |