

5

4

3

2

1

DRAWING NO.
CP1094U-CUST

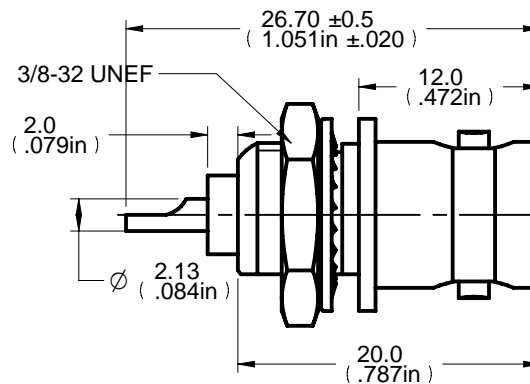
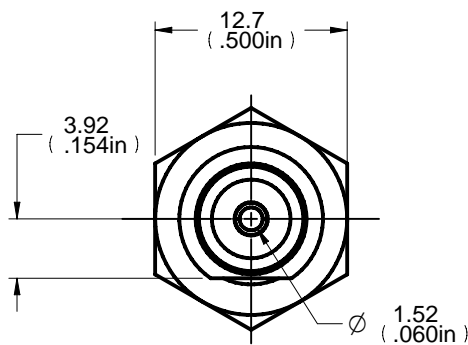
REVISIONS

01	OFFICIAL RELEASE					
	03-20-09	T	W	B	Y	T
02	RELEASE FOR SUPPLIER ALTER					
	07-27-11	Y	G	Y	M	L
03	LOCK WASHER MATERIAL WAS BRASS ADD MORE DIMENSIONS					
	07-27-11	Y	G	Y	M	L
04	3/8-32UNEF WAS 3/8-32UNEF-2A					
	01-11-12	Y	G	Y	M	L

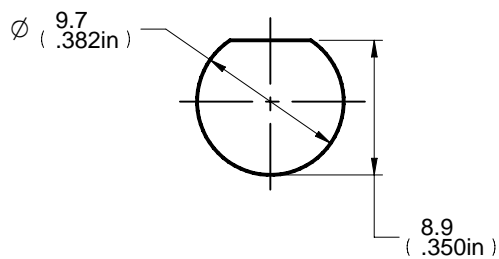
Description: BNC,Front Mount Bulkhead Jack, BeCu Contact
 Part No: CP1094U
 Application: PCB
 Crimp Tool: N/A
 Impedance: 50 Ohms
 Frequency Range: 0-4 GHz
 Material: Body Brass Nickel plated
 Contact Becu Gold plated
 Insulotor Teflon
 Nut Brass Nickel plated
 Lock Washer S50C Nickel plated

RoHS Compliance: Yes

Technical Detail: Refer to Emerson Document P/N 27-0000



RECOMMENDED MOUNTING HOLE DIMENSIONS



DIM OUTLINE

CUSTOMER COPY

TOLERANCE UNLESS OTHERWISE SPECIFIED		DRAWN BY YUGE HU	DATE 07-27-11
DECIMALS	mm	CHECKED BY YUGE HU	DATE 07-27-11
X	+ 0.5	APPROVED BY LIN MA	DATE 07-27-11
X.X	+ 0.2	U/M	mm
X.XX	+ 0.1		
ANGLES	+ 0.5°		

EMERSON
Network Power

Connectivity Solutions

TITLE BNC,FRONT MOUNT BULKHEAD JACK, BECU CONTACT

THIS DRAWING WAS PRODUCED BY COMPUTER, DO NOT SCALE DRAWING OR UPDATE MANUALLY.		SHEET 1 OF 1	DRAWING NO. CP1094U-CUST	SIZE A
---	--	-----------------	-----------------------------	-----------

5

4

3

2

1