

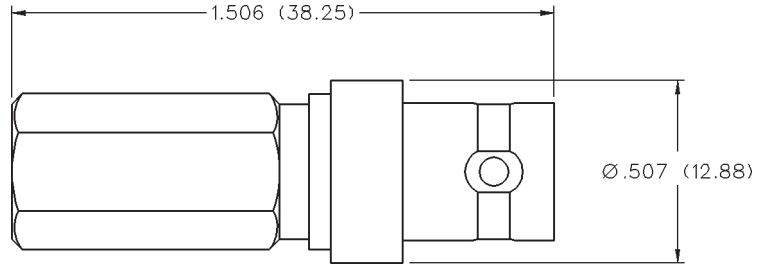
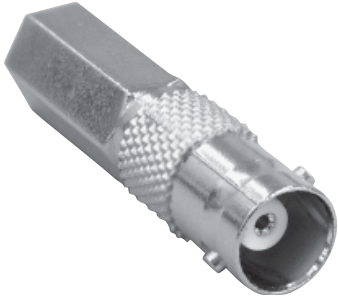
BNC Connectors - 50 Ohm Commercial

For Flexible Cable

INCHES (MILLIMETERS) • CUSTOMER DRAWINGS AVAILABLE ON REQUEST

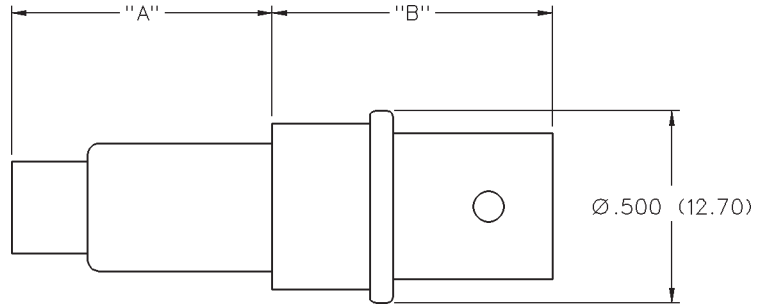


Straight Twist-On Jack - Field Installable - 1 Piece



| PART NO. | CABLE TYPE | CABLE CENTER CONDUCTOR | WIRE GAUGE | WIRE DECIMAL | JACKET O.D. |
|-------------|------------|------------------------|------------|--------------|-------------------------|
| CPFI-UG89-2 | RG-59, 62 | SOLID | 22 | .025 (0.64) | .220 (5.59)-.250 (6.35) |

Straight Crimp Type Jack - Push-On Body - 2 Piece



| PART NO. | CABLE TYPE | CABLE CENTER CONDUCTOR | "A" | "B" | WIRE GAUGE | WIRE DECIMAL | JACKET O.D. |
|----------|------------|------------------------|--------------|--------------|------------|--------------|-------------------------|
| CP-89-1 | RG-58 | SOLID | .680 (17.27) | .668 (16.97) | 20 | .032 (0.81) | .195 (4.95)-.210 (5.33) |
| CP-89-2 | RG-59, 62 | SOLID | .673 (17.09) | .675 (17.15) | 22 | .025 (0.64) | .220 (5.59)-.250 (6.35) |

Assembly instructions page 250.